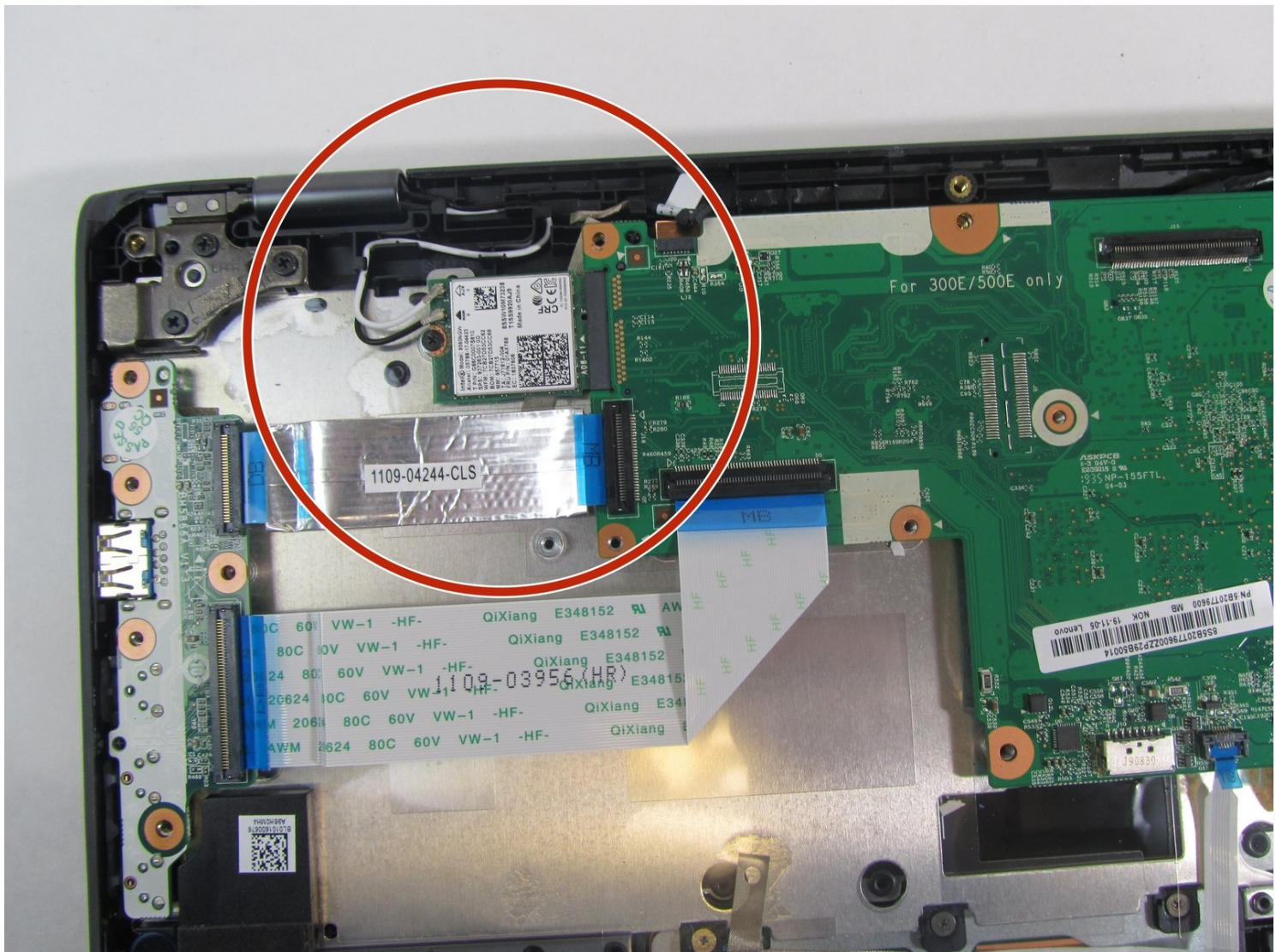




Lenovo 500e Chromebook 2nd Gen Wi-Fi Card Replacement

This guide will show you how to replace the...

Written By: Nicolas Lidinsky



INTRODUCTION

This guide will show you how to replace the Bluetooth 5.1 Wi-Fi card in the Lenovo 500e 2nd Gen Chromebook, model number: 81MC005AUS. The Wi-Fi card connects the laptop to the internet and other devices. If your Bluetooth or Wi-Fi is not working properly, check our [troubleshooting page](#).

TOOLS:

Phillips #00 Screwdriver (1)

iFixit Opening Tool (1)

Phillips #0 Screwdriver (1)

Tweezers (1)

Step 1 — Back Panel



- Remove nine 6 mm screws from the bottom cover of the laptop using a Phillips #0 screwdriver.

Step 2



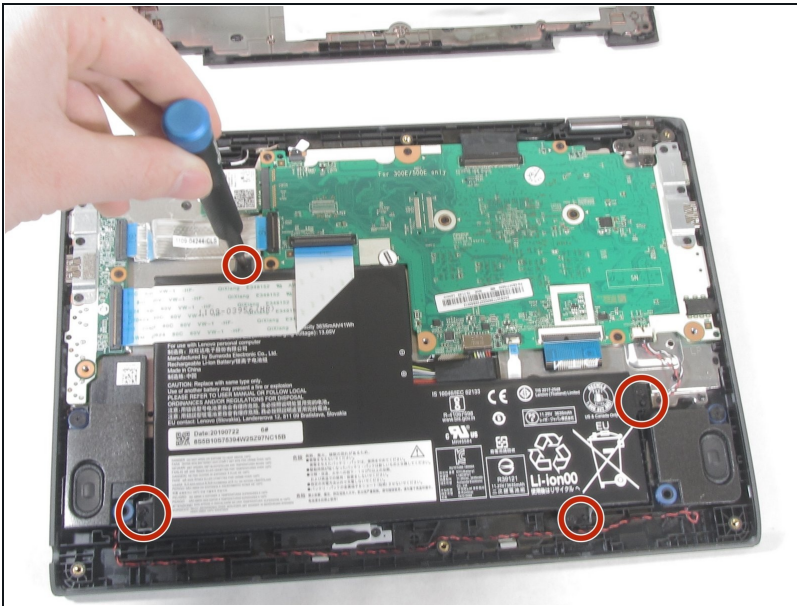
- Remove stylus from the lower left corner of the back panel.

Step 3



- Go along the edge of the back panel with an iFixit opening tool until it pops loose.
- Remove the back panel from the laptop.

Step 4 — Battery



- Remove the four 4 mm Phillips #00 screws holding the battery in.

Step 5



- Use the iFixit opening tool to unplug the battery from the motherboard.

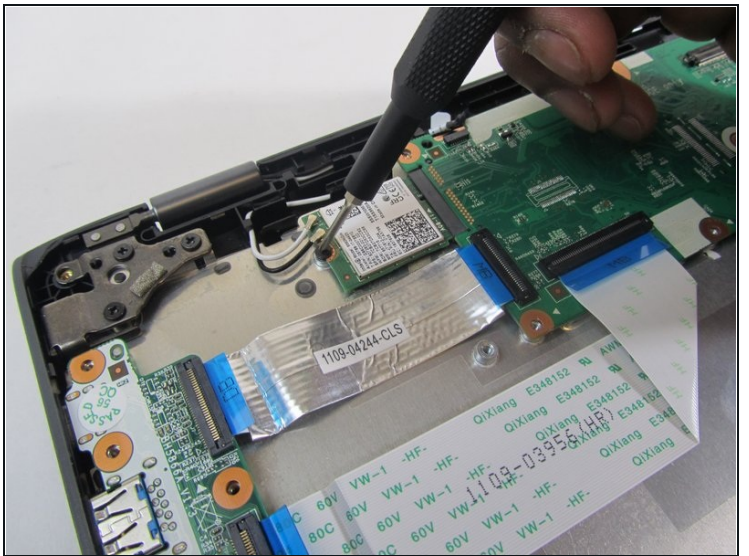
⚠ Potential for device damage: Make sure to be gentle while removing the wire.

Step 6



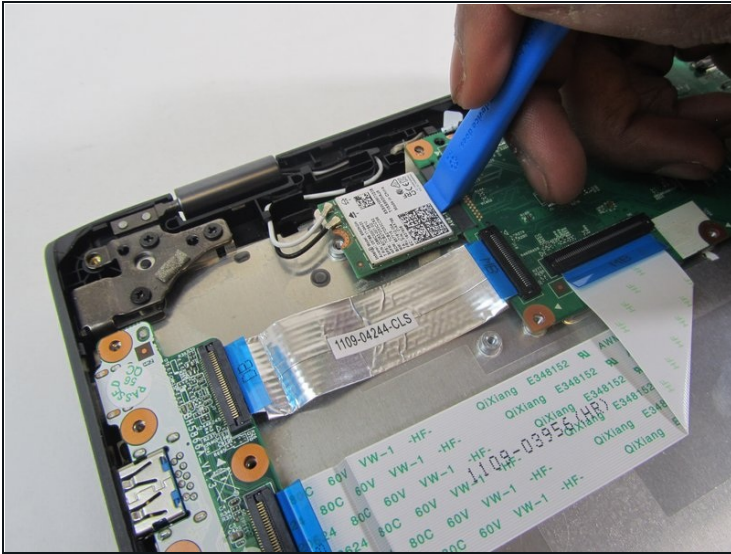
- Remove the battery from the laptop.

Step 7 — Wi-Fi Card



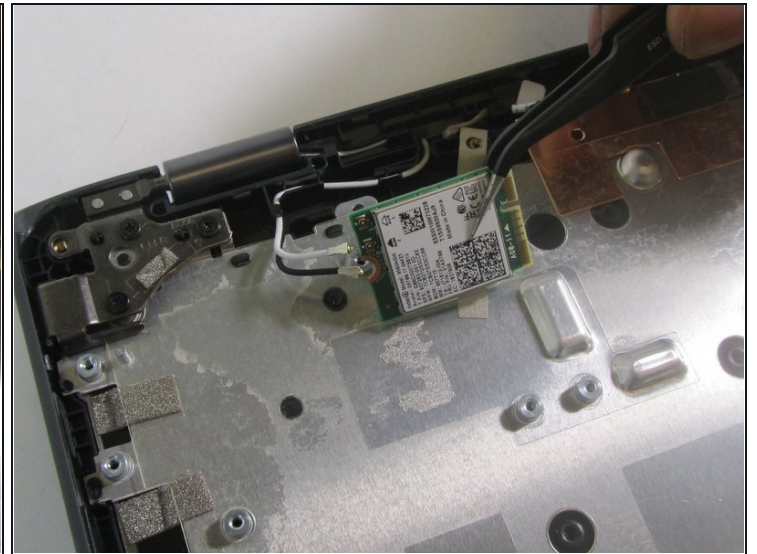
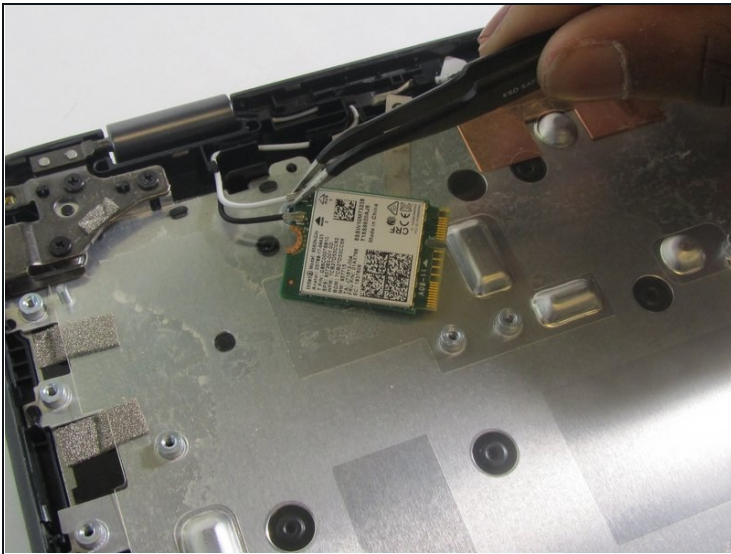
- Remove the single 2 mm screw from the Wi-Fi card using a Phillips #00 screwdriver.

Step 8



- Detach the Wi-Fi card from the motherboard using an iFixit opening tool.

Step 9



- Using [tweezers](#), disconnect the two wires from the Wi-Fi card.
- Remove the Wi-Fi card from the laptop.

To reassemble your device, follow these instructions in reverse order.