



Lenovo 500e Chromebook 2nd Gen Keyboard Replacement

This guide will show you how to replace the...

Written By: Nicolas Lidinsky



INTRODUCTION

This guide will show you how to replace the keyboard for the Lenovo 500e 2nd Gen Chromebook, model number: 81MC005AUS. The keyboard allows the user to type and use the trackpad. If your keyboard is malfunctioning, refer to our [troubleshooting page](#).

TOOLS:

Phillips #00 Screwdriver (1)

Tweezers (1)

Phillips #0 Screwdriver (1)

iFixit Opening Tool (1)

Step 1 — Back Panel



- Remove nine 6 mm screws from the bottom cover of the laptop using a Phillips #0 screwdriver.

Step 2



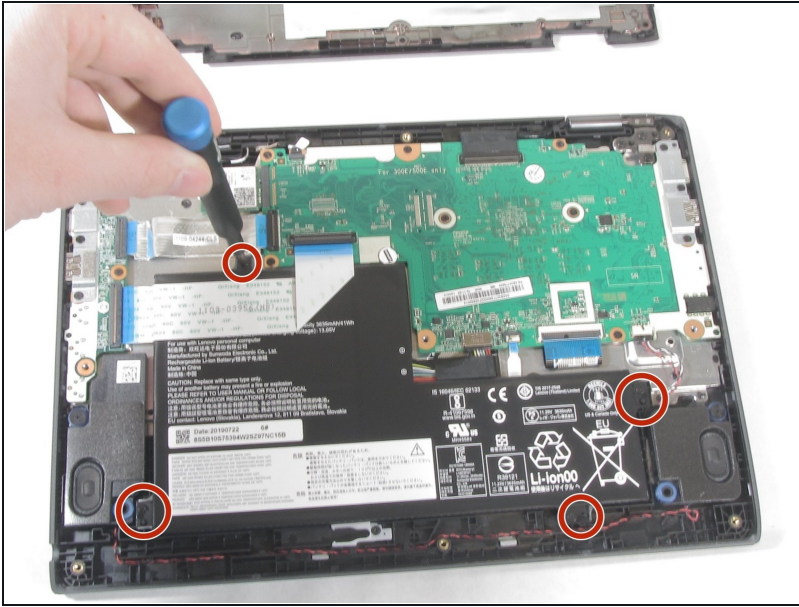
- Remove stylus from the lower left corner of the back panel.

Step 3



- Go along the edge of the back panel with an iFixit opening tool until it pops loose.
- Remove the back panel from the laptop.

Step 4 — Battery



- Remove the four 4 mm Phillips #00 screws holding the battery in.

Step 5



- Use the iFixit opening tool to unplug the battery from the motherboard.

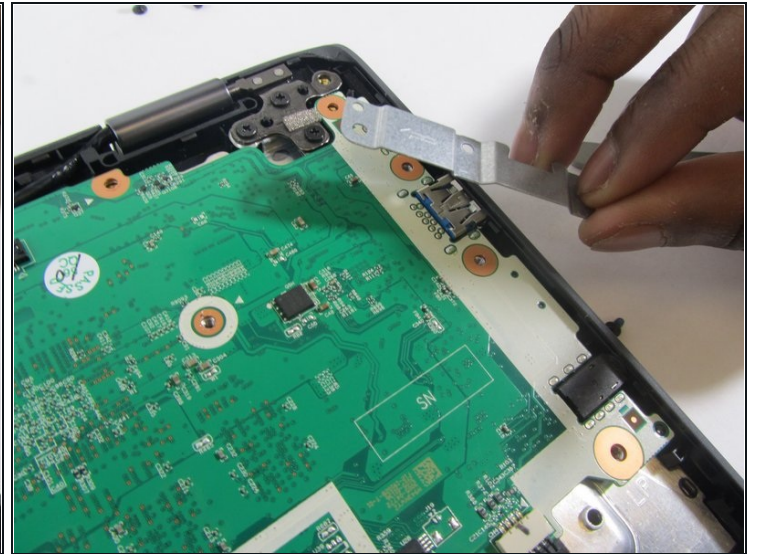
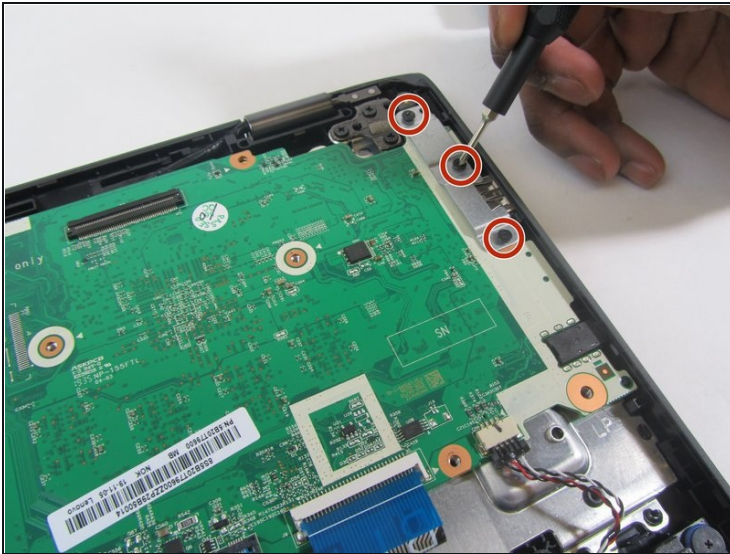
⚠ Potential for device damage: Make sure to be gentle while removing the wire.

Step 6



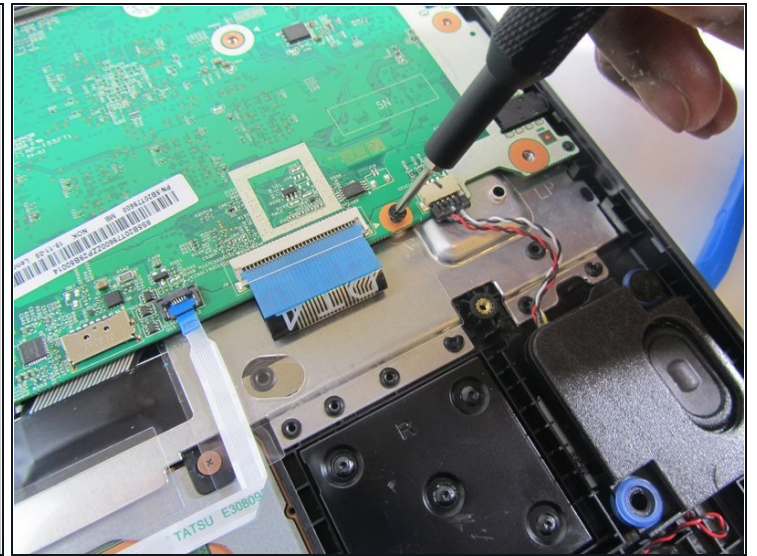
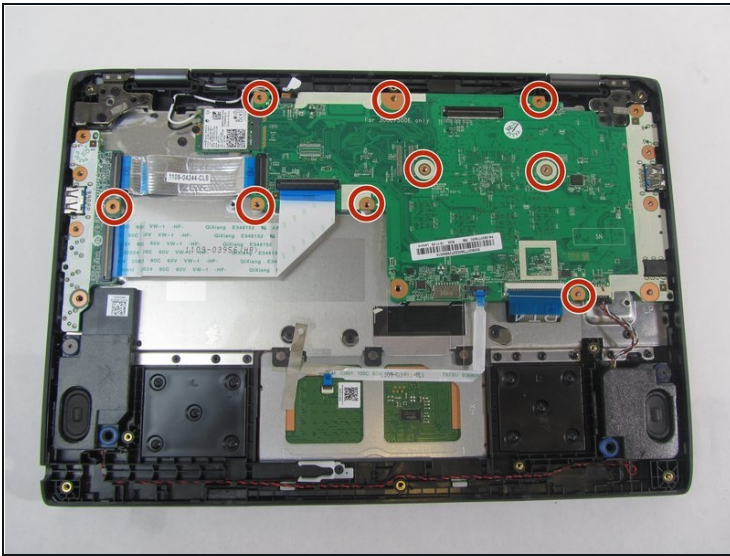
- Remove the battery from the laptop.

Step 7 — Motherboard



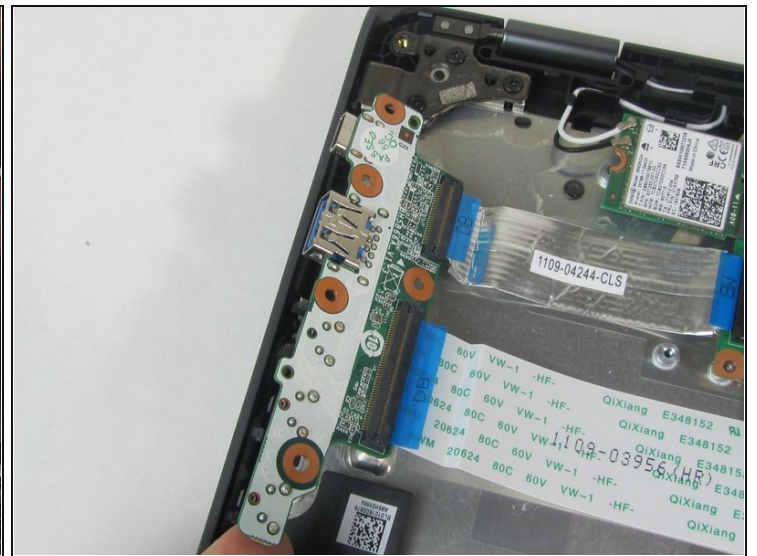
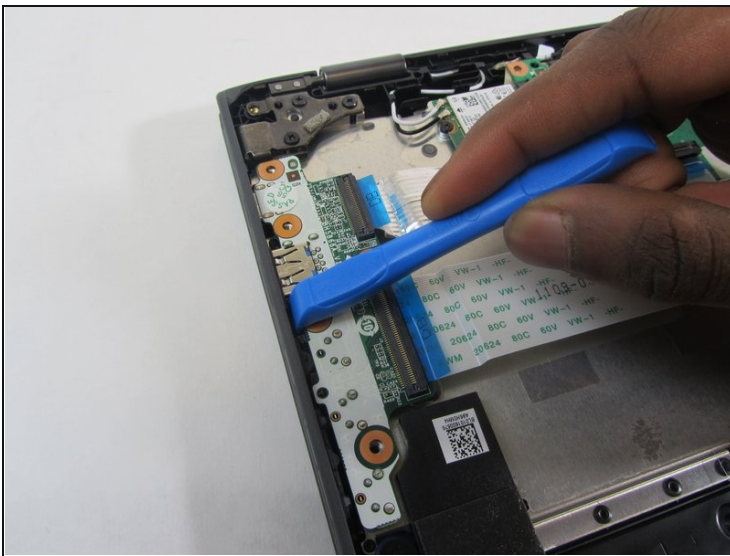
- Remove the three 4 mm screws (six total) from the left and right side brackets using a Phillips #00 screwdriver.
- Gently remove the metal brackets from the motherboard.

Step 8



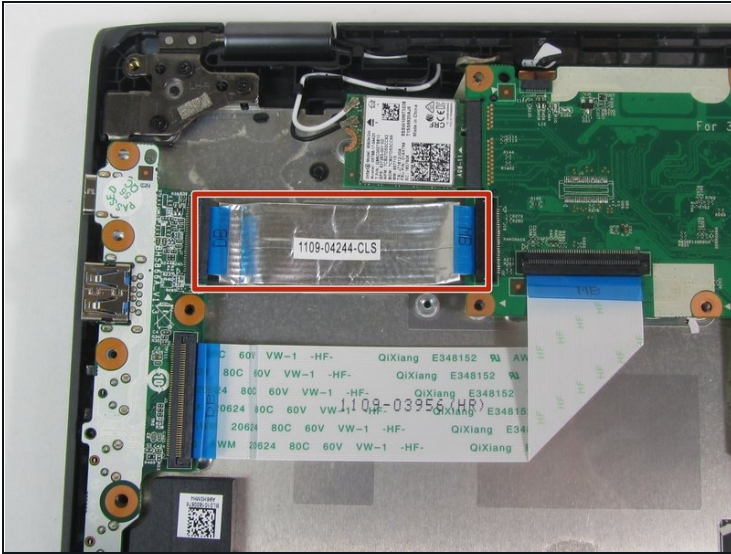
- Remove the nine 4 mm screws from the motherboard using a Phillips #00 screwdriver.

Step 9



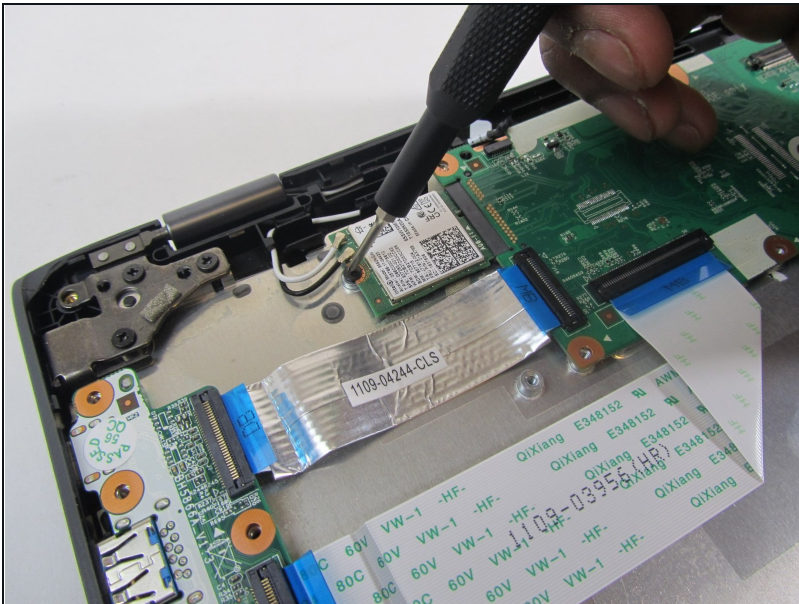
- Gently remove the USB port from the side housing using an iFixit opening tool.

Step 10



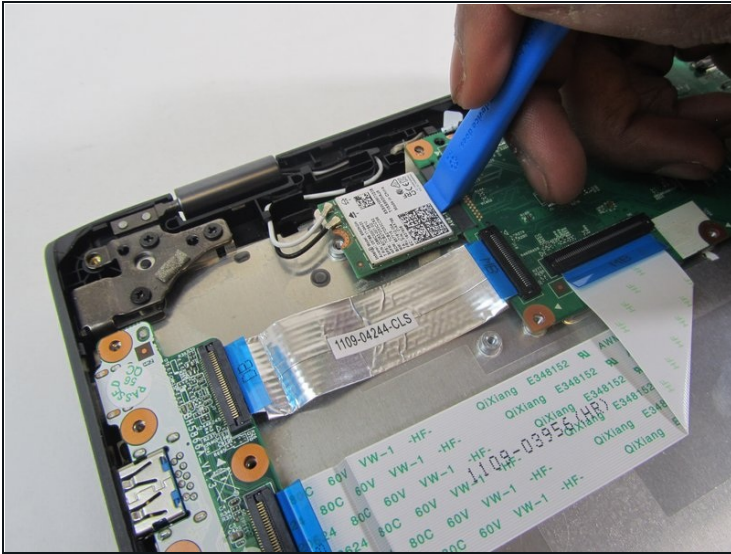
- Gently peel the metal strip away from the metal backing.

Step 11



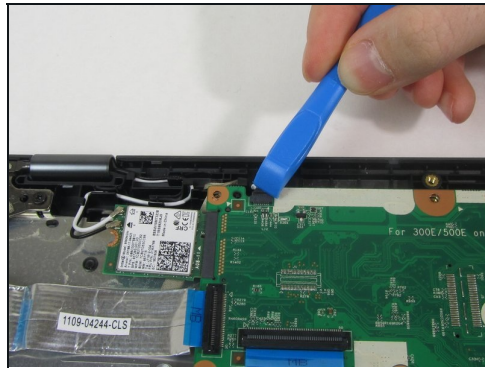
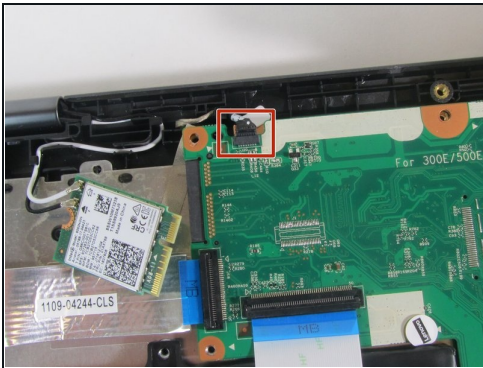
- Remove the single 3 mm screw that holds the Wi-Fi card in place using a Phillips #00 screwdriver.

Step 12



- Disconnect the Wi-Fi card from the motherboard using an iFixit opening tool.

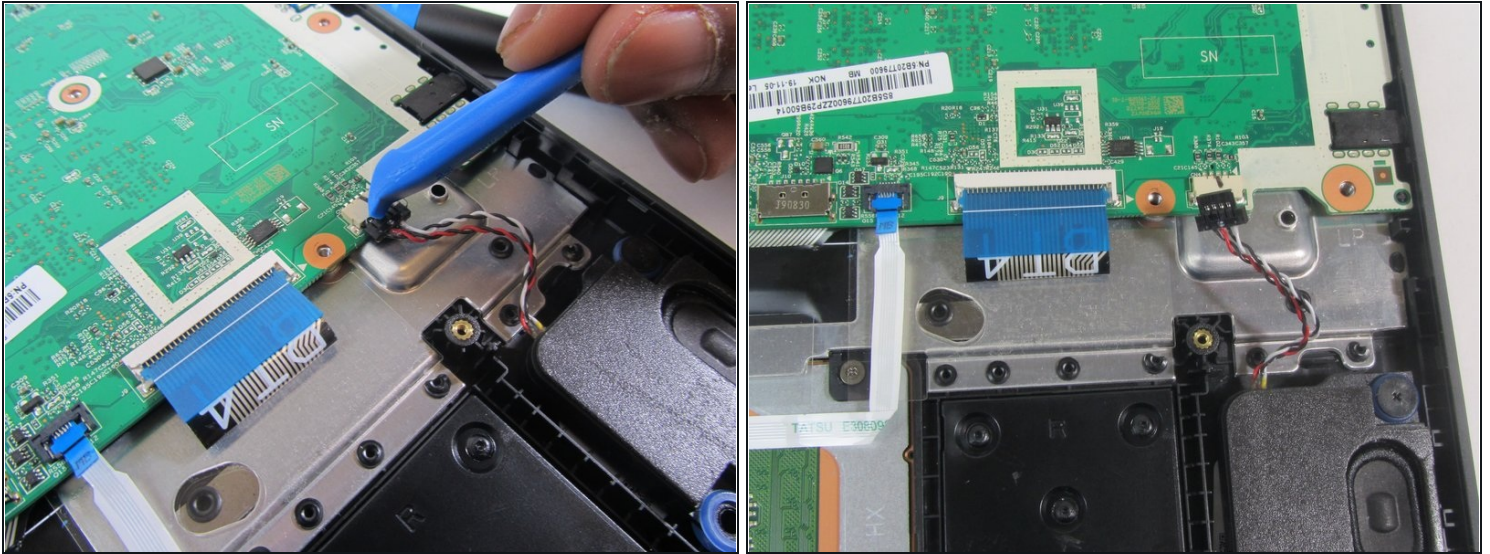
Step 13



- Using an iFixit opening tool, disconnect the camera cable.

⚠ Potential for device damage: Be gentle while removing the wire.

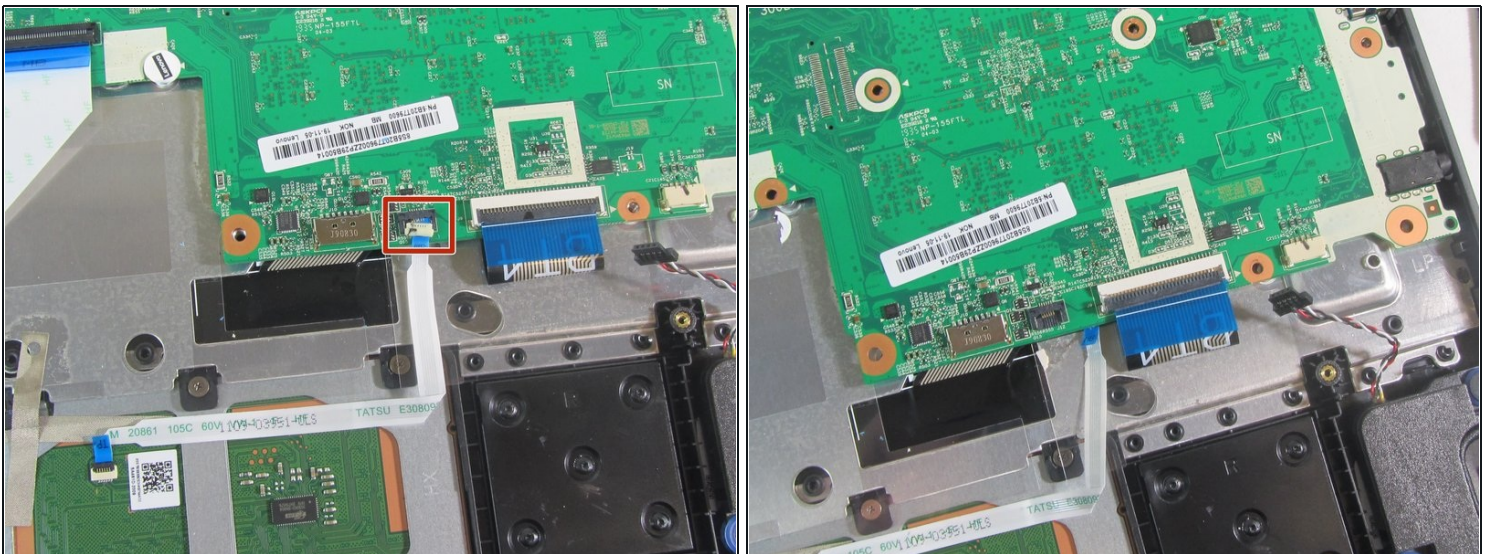
Step 14



- Using an iFixit opening tool, detach the speaker wiring from the motherboard.
- Set speakers aside for reinstallation.

⚠ Potential for device damage: Be gentle while removing the wire.

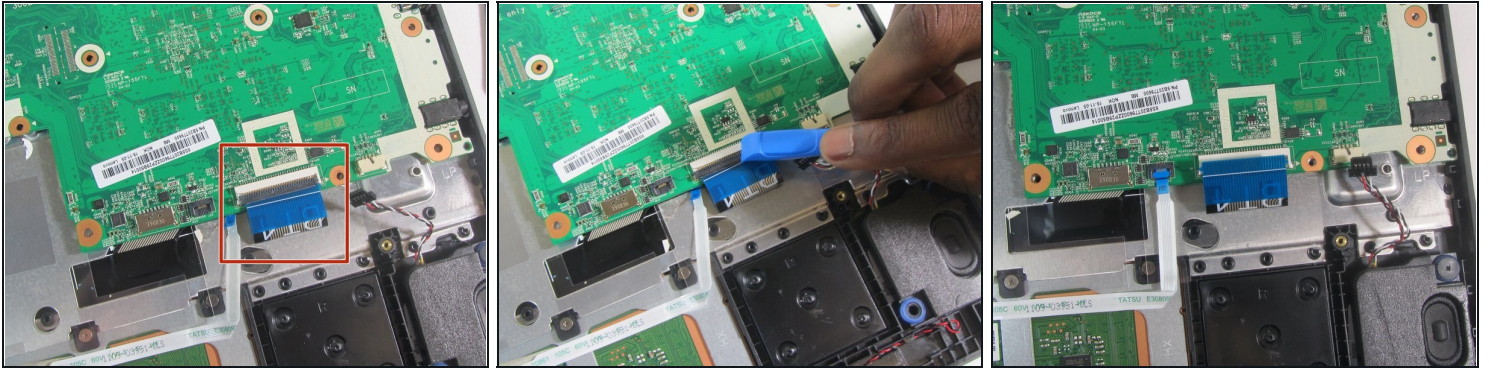
Step 15



- Using an iFixit opening tool, detach the track pad connector from the motherboard.

⚠ Potential for device damage: Be gentle while detaching the connector.

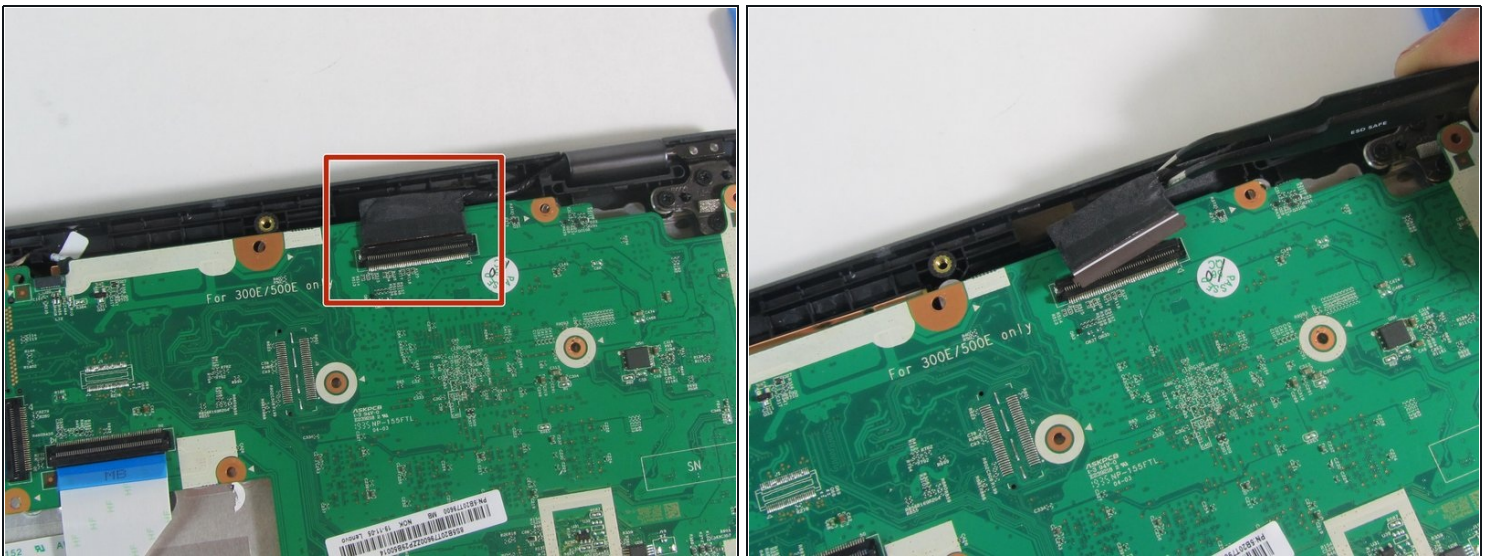
Step 16



- Using an iFixit opening tool, detach the keyboard cable from the motherboard.

⚠ Potential for device damage: Be gentle when detaching the cable.

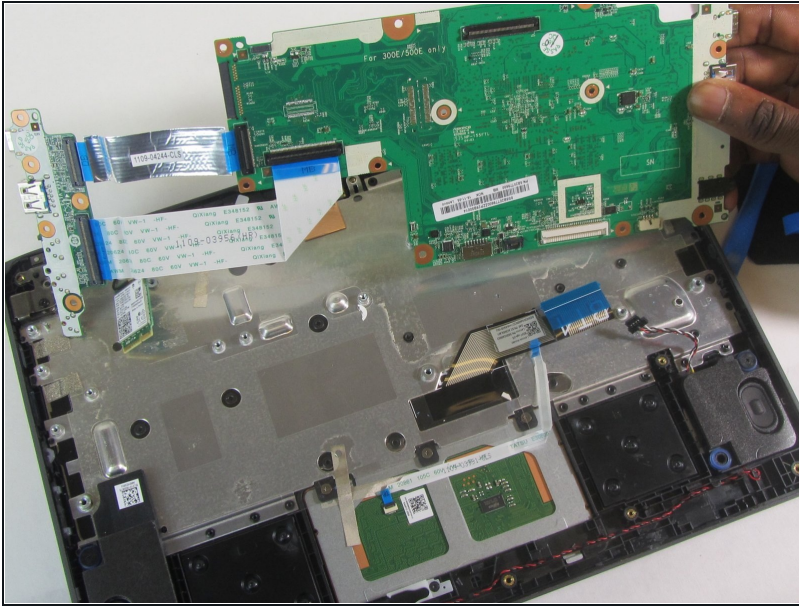
Step 17



- Using [tweezers](#), disconnect the black cable from the motherboard.

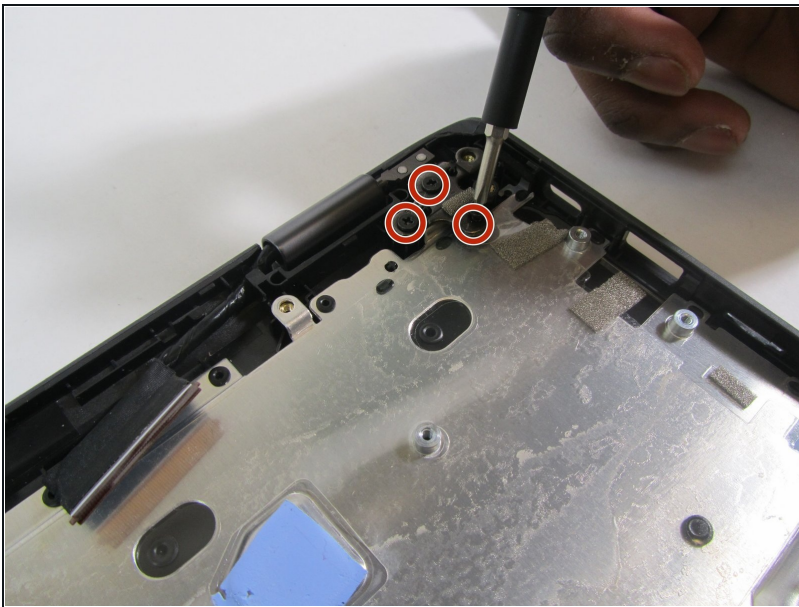
⚠ Potential for device damage: Be gentle while detaching the cable.

Step 18



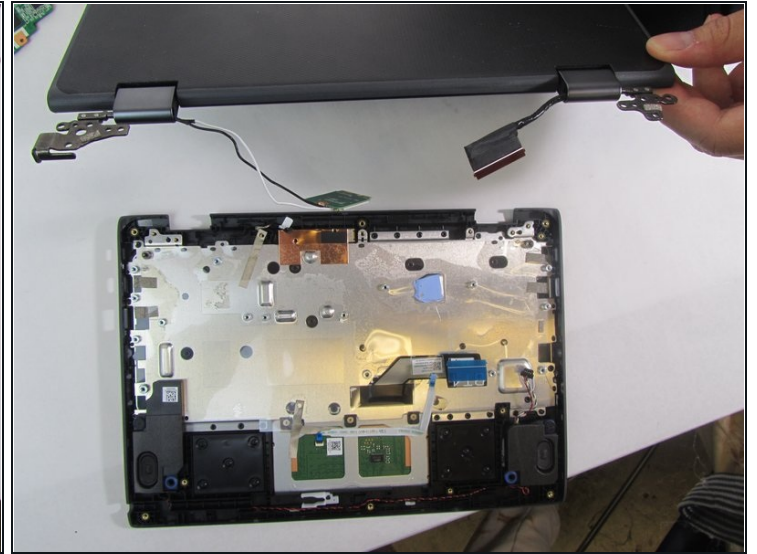
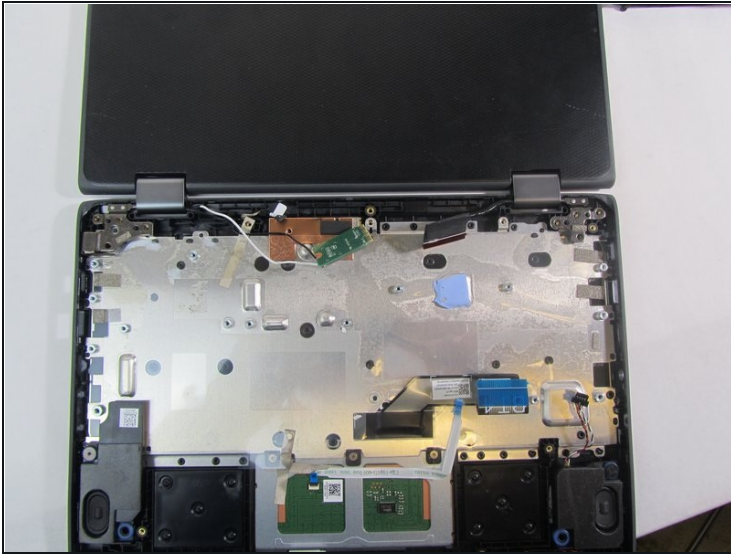
- Gently remove the motherboard from the laptop.

Step 19 — Keyboard



- Remove the three 5 mm screws (six total) from each hinge using a Phillips #0 screwdriver.

Step 20



- Gently open the laptop screen and it will separate from the keyboard.

To reassemble your device, follow these instructions in reverse order.