



# KitchenAid KUDS01DJSS0 Electronic Control Board Replacement

The KitchenAid #KUDS01DJSS dishwasher's...

Written By: Thuan Trang



## INTRODUCTION

The KitchenAid #KUDS01DJSS dishwasher's electronic control board can be replaced using this guide. You can verify your dishwasher's model by checking inside the door.

The control board controls all of the dishwasher's functions, such as filling, washing, drying, and draining. Symptoms that match your issue can be diagnosed by viewing these [Dishwasher Repairs](#). During the time it takes to replace the dishwasher control board, remind your family not to run the dishwasher for about 30 minutes.

Before replacing the electronic control board, make sure the power/electricity is off. Disconnect the dishwasher from any external power source before starting the process and turn off the dishwasher completely.



### TOOLS:

- [TR10 Torx Security Screwdriver](#) (1)
- [1.8 X 40 Slot Screwdriver](#) (1)
- [Leather Work Gloves](#) (1)

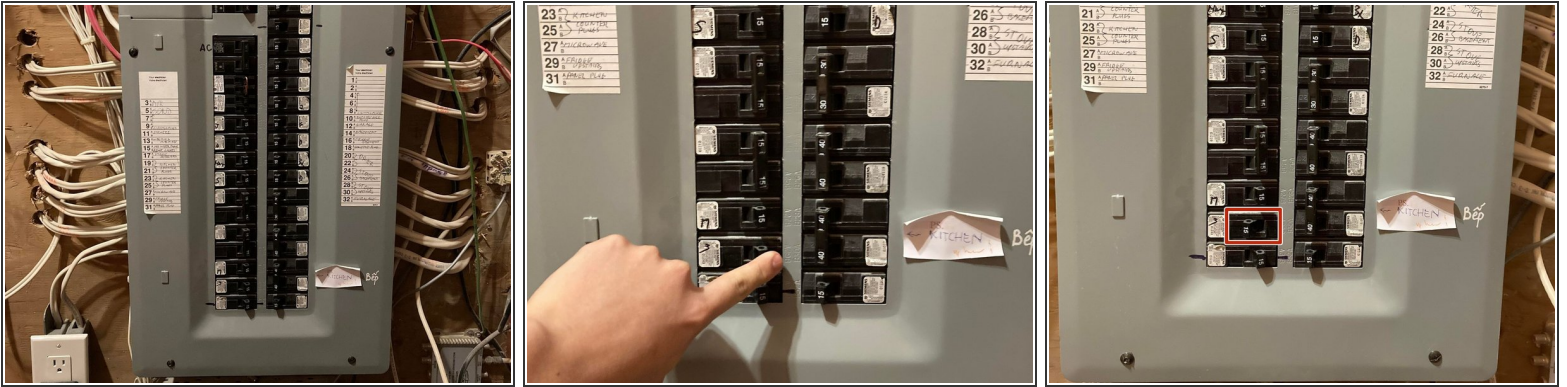


### PARTS:

- [Dishwasher Control Board Replacement #154783201](#) (1)



## Step 1 — Electronic Control Board



- Unplug the dishwasher or shut off the house circuit breaker for the dishwasher.

⚠ To verify that power is disconnected, make sure that the control panel doesn't light up when you press a control button or the power button.

## Step 2



- Open the dishwasher door.

### Step 3



- Remove the four screws from each side of the dishwasher door (eight screws total).
  - Removing the three screws from each side of the dishwasher (six screws total).
  - Support the outer door panel with one hand as you remove the final two screws at the top of the dishwasher door.
- i** There are total of sixteen (16) screws.

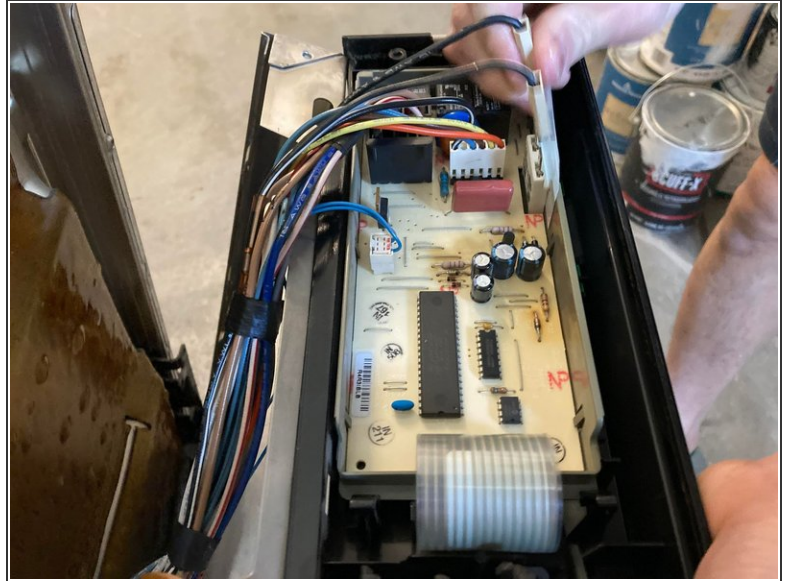
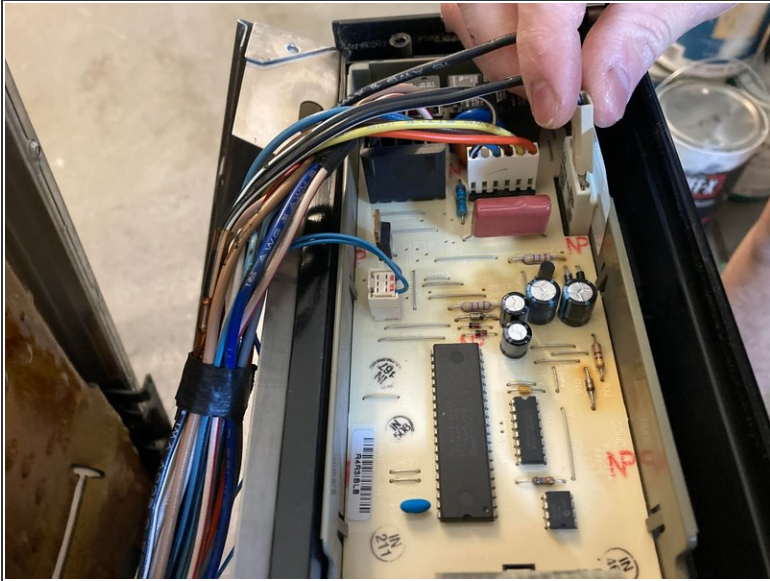
### Step 4



- Use your hands to pull off the outer door panel with the control panel.

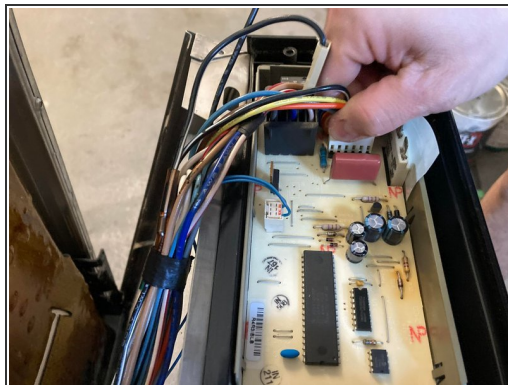


## Step 5



- Disconnect the two white outer wires by pulling them out.
- ⓘ The two white connectors have the same size and are close together.
- ⓘ Use one hand to hold the control panel while disconnecting the electrical connections from the old board.

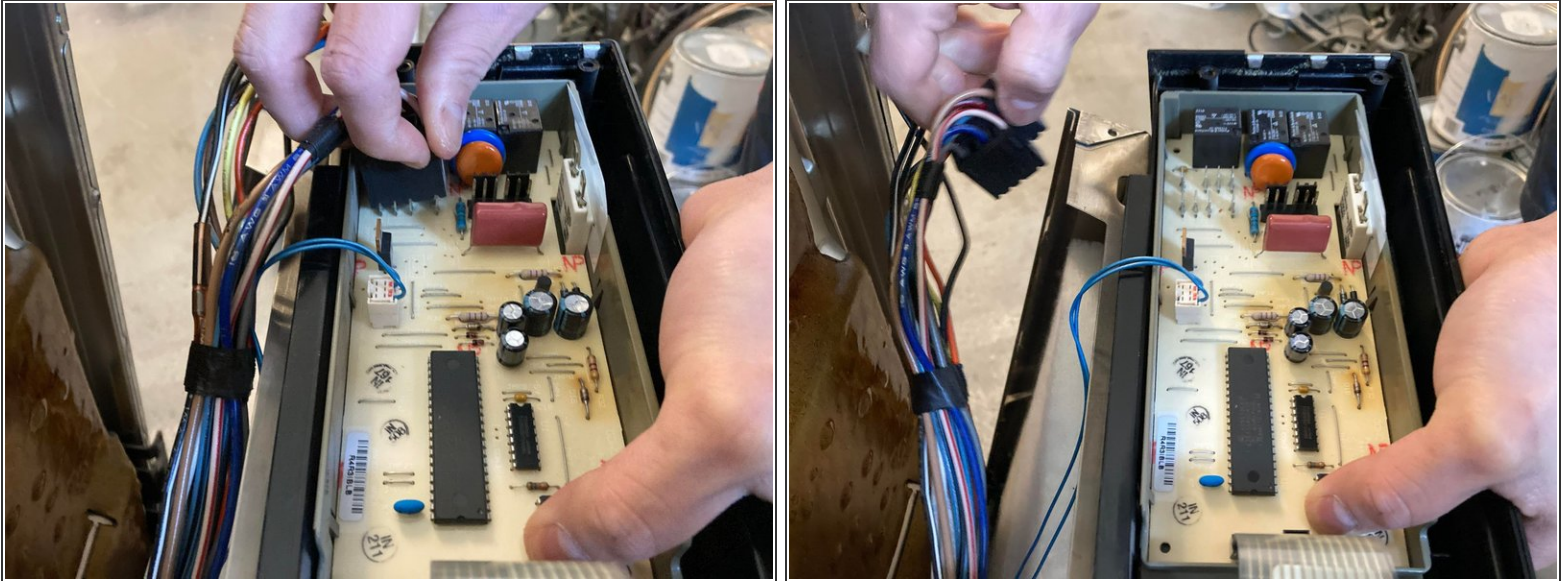
## Step 6



- Remove the white rectangular connector that has six colored wires connected to it.



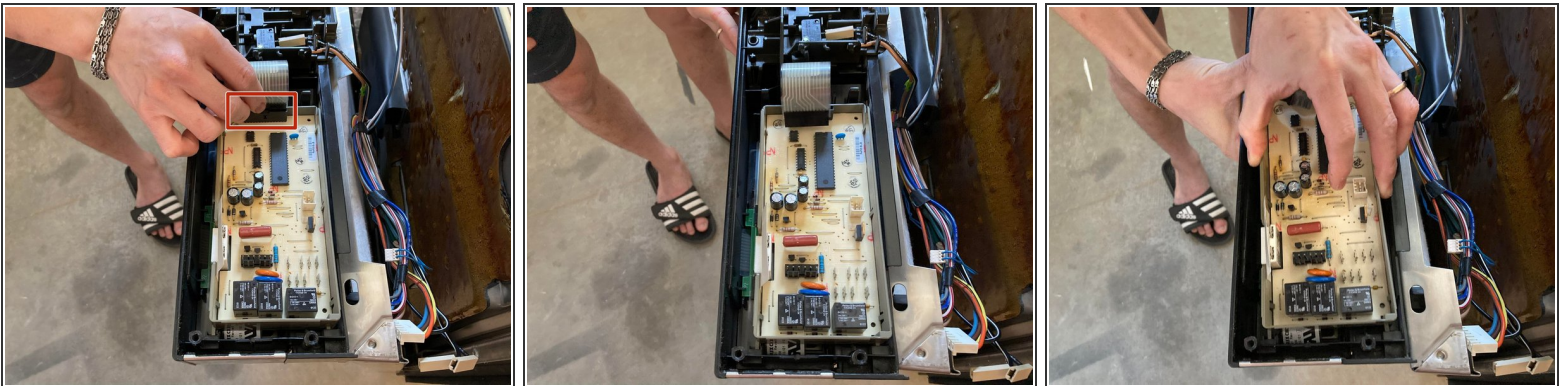
## Step 7



- Use one hand to hold the control panel while detaching the black connector.

**i** The black connector is the main connector to the control board.

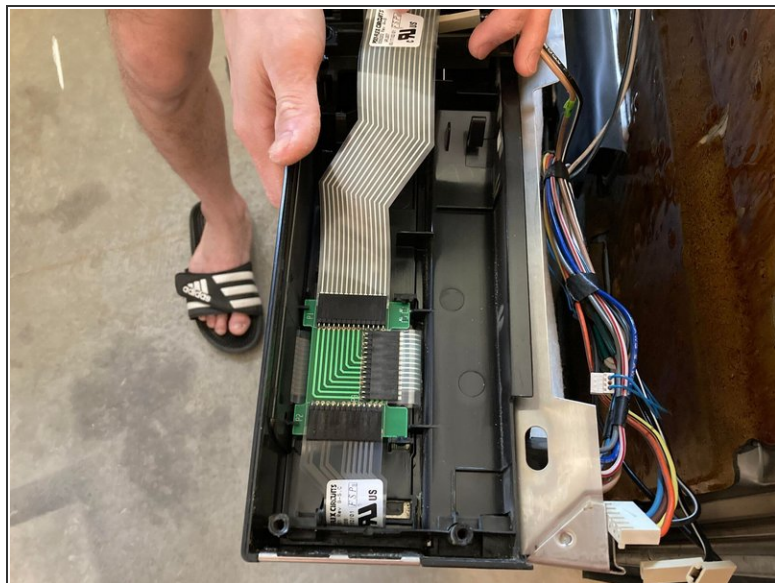
## Step 8



- Detach the white and gray ribbon cable attached to the black connector.



## Step 9



- Use your hands to pull the electronic control board out the mounting slots.

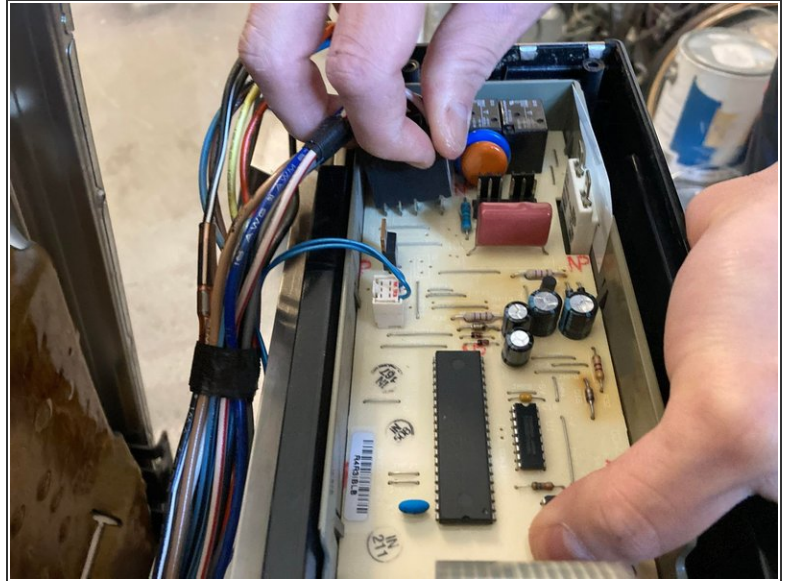
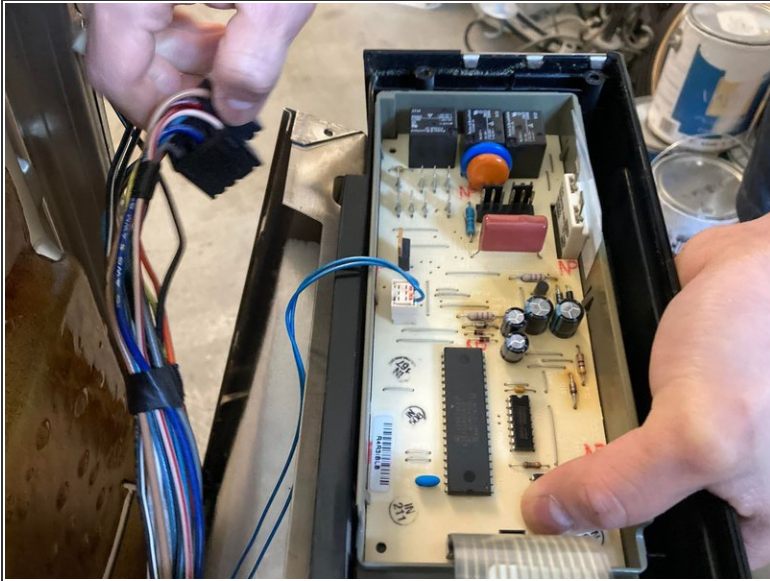
## Step 10



- Push the new electronic control board into the mounting slots.
- Slide it to the right to engage the locking tab until you hear a click.

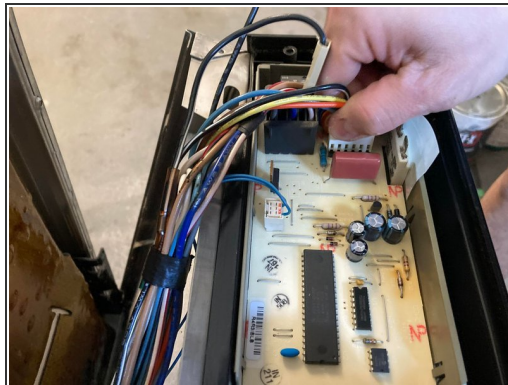
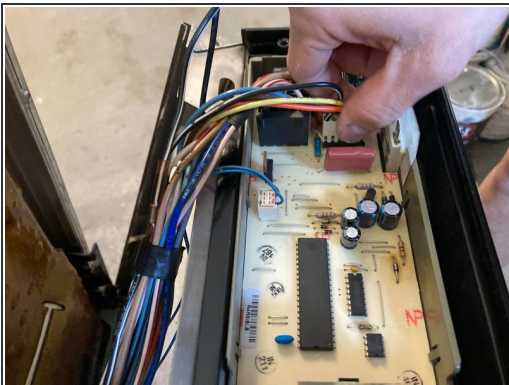


## Step 11



- Reconnect the black connector wires to the new electronic control board.

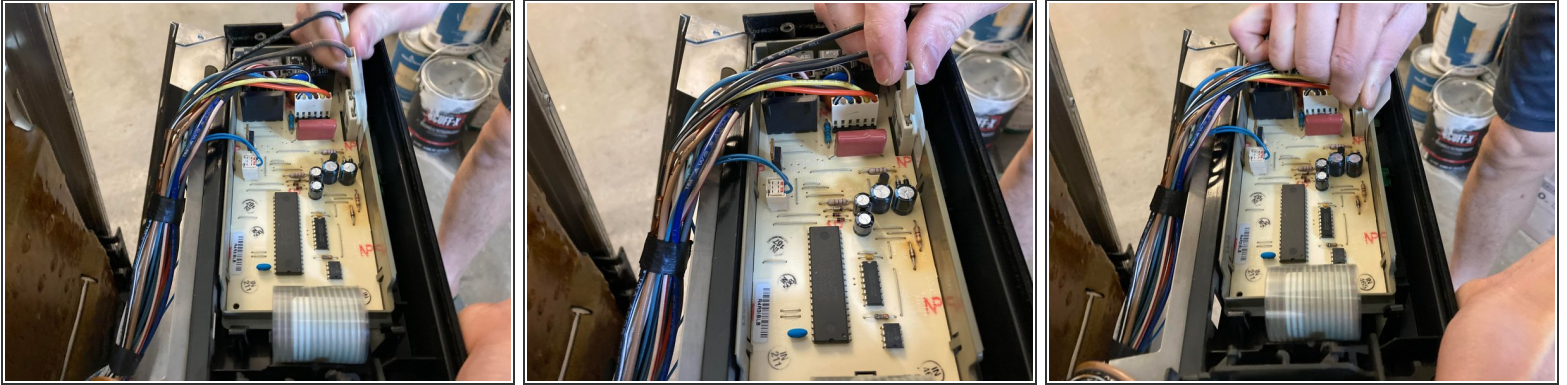
## Step 12



- Reconnect the white rectangular connector with six wires to the new electronic control board.



## Step 13



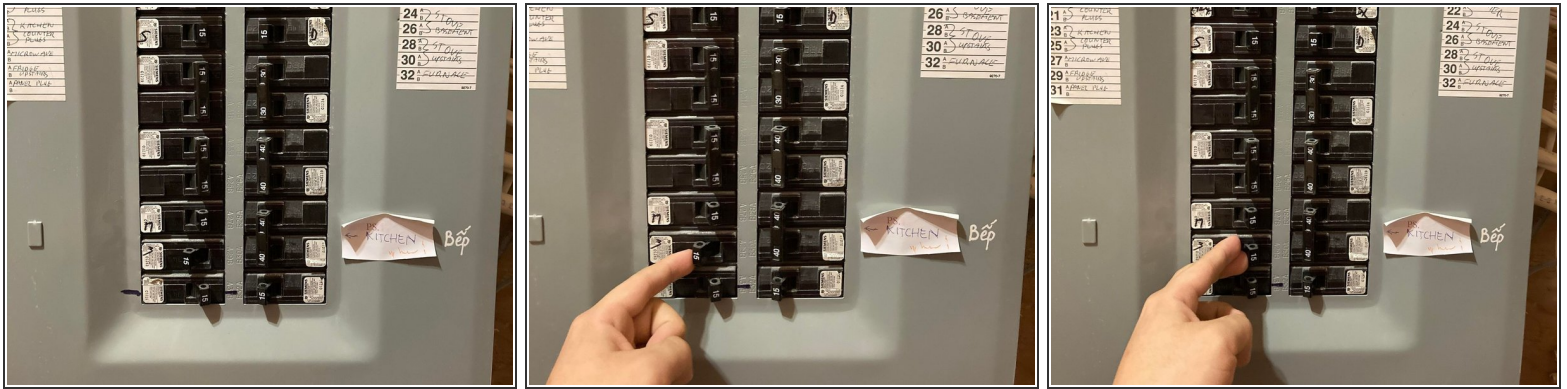
- Reconnect the two white outer connector wires to the new electronic control board.

## Step 14



- Reinstall the outer door panel and control panel on the inner door panel and reattach the user interface control wire harness.
- Reinstall the sixteen mounting screws.

## Step 15



- Connect the dishwasher and reset the circuit breaker for your house to restore electricity.
- i** To verify that power is connected, make sure that the control panel does light up when you press a control button or the power button.