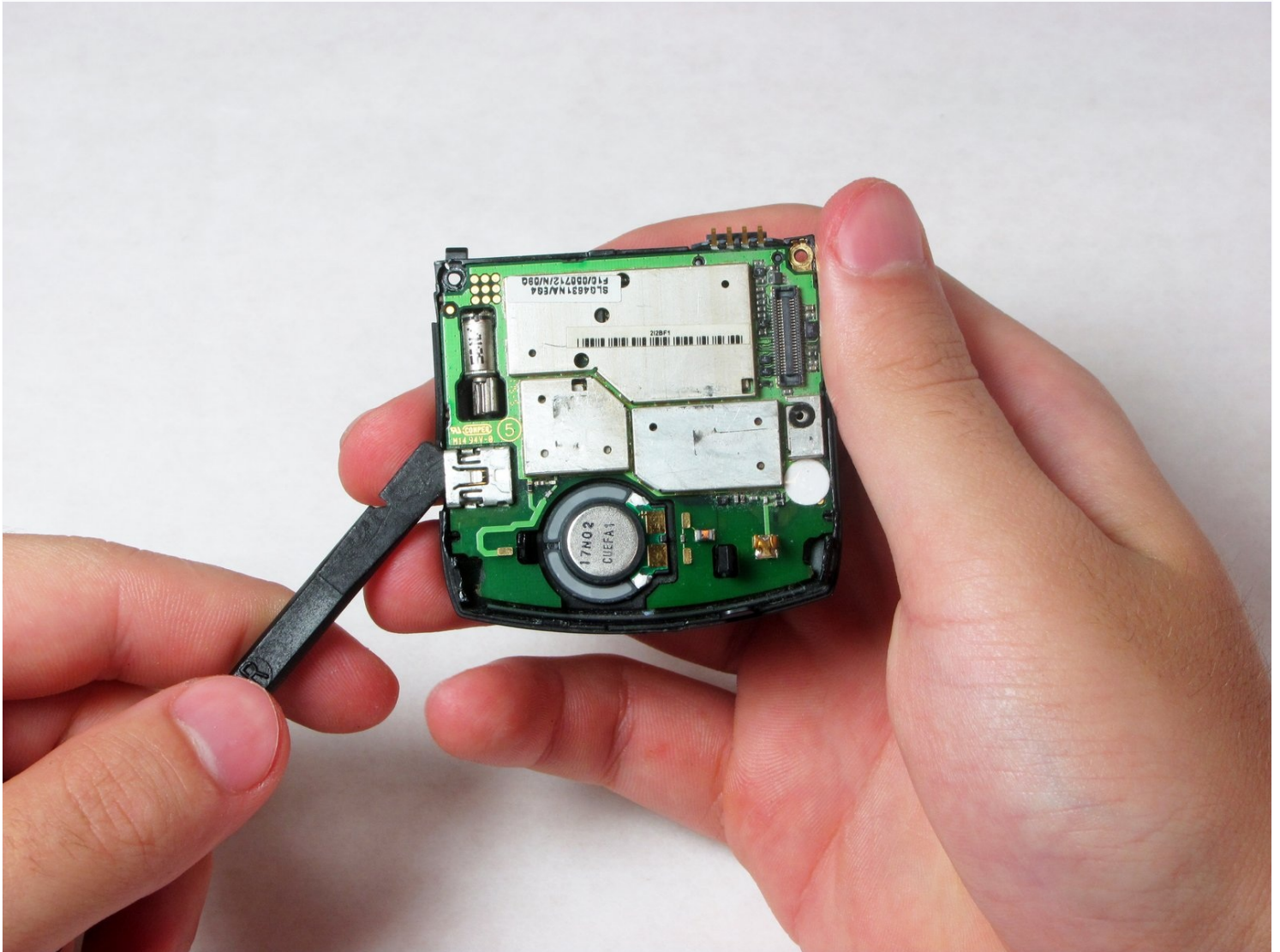




Motorola Razr V3 Motherboard Replacement

By following this guide you will remove the...

Written By: Matthew Cristler



INTRODUCTION

By following this guide you will remove the motherboard of the device. You may need to do this if your phone won't turn on and all other parts are still functional.

TOOLS:

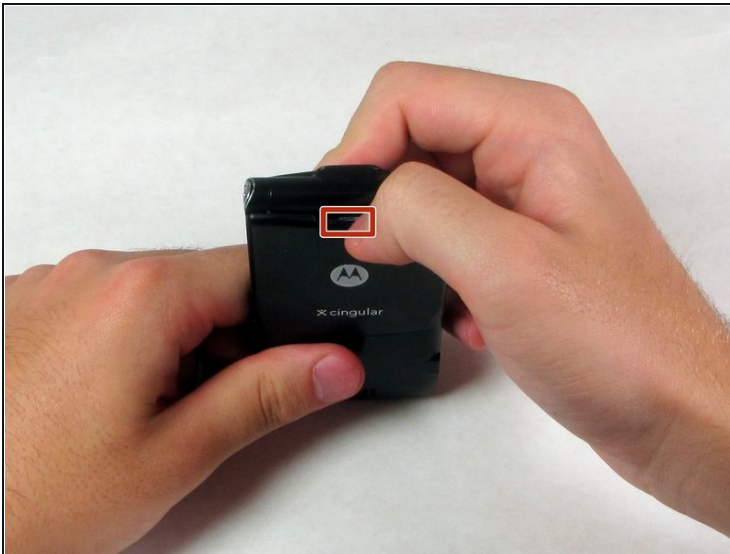
[iFixit Opening Tool](#) (1)

[Spudger](#) (1)

[T6 Torx Screwdriver](#) (1)

[Tweezers](#) (1)

Step 1 — Battery



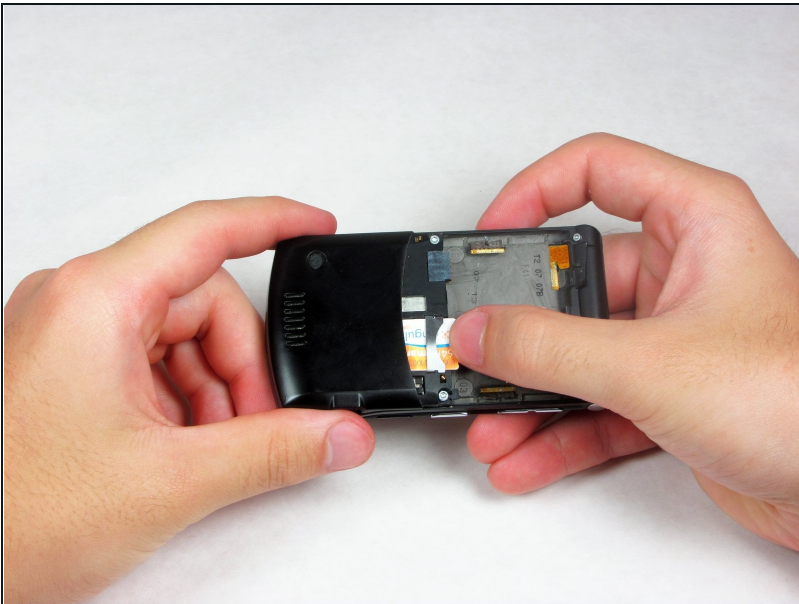
- Remove the back cover by pressing down the silver button.
- Pull the cover away from the phone.

Step 2



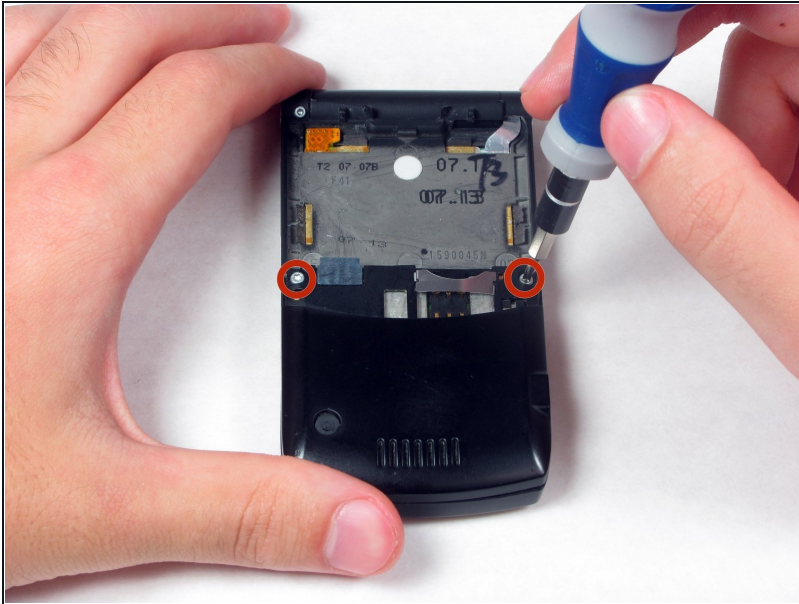
- Remove the battery by pushing down on the top and pulling it away from the phone.

Step 3 — SIM Card



- Remove the SIM card by pulling it toward the top of the phone with your thumb.

Step 4 — Antenna



- Unscrew the two 5mm T6 Torx screws from the phone.

Step 5



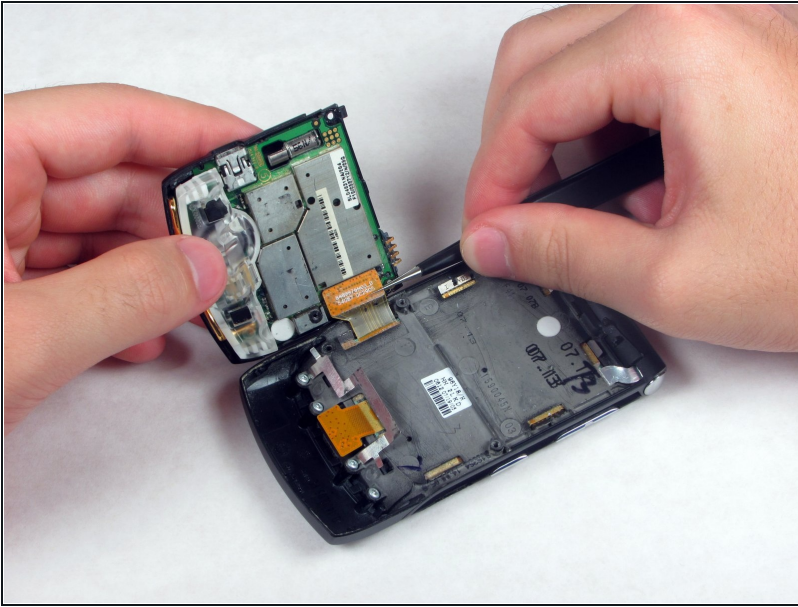
- Pry open the back of the phone using the spudger. There are four clips, one on the left, one on the right, and two on the bottom of the phone.

① You can rotate the phone left and right to get easier access while prying.

⚠ Make sure to fold back of phone down (or left depending on your orientation) after separating from body as there is ribbon connecting the back to the phone's body which can be ripped if pulled the wrong way.

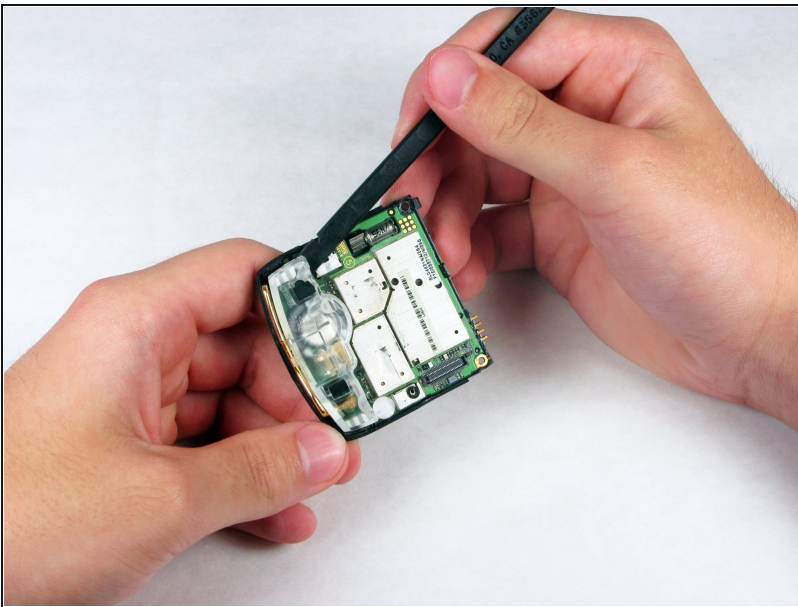
⚠ The tab as well as the plastic clips are fragile, be careful when using them.

Step 6



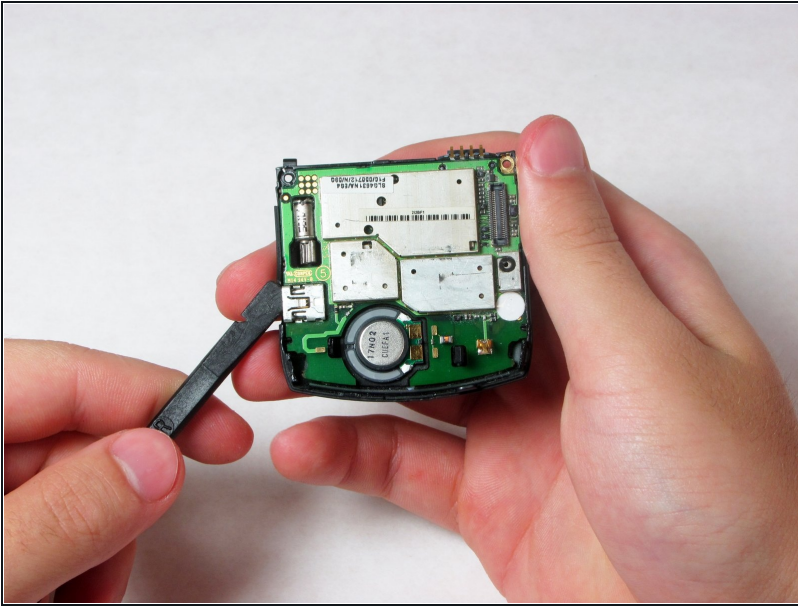
- Using [tweezers](#), disconnect the copper ribbon on the left side of the phone by pulling it up from the circuit board.
- ⓘ The clear part below the circuit board is the antenna.

Step 7



- Remove the antenna by pushing in the tabs on the sides with the spudger, and pulling it out.
- ⚠ These clips are also fragile.
- ★ When reassembling, make sure the copper piece of the antenna is properly inserted between the two copper clips that stick up from the phone.

Step 8 — Motherboard



- Use a spudger or blue opening tool to pry the motherboard away from the back casing.
- ⓘ The speaker and the motherboard are magnetic and will most likely come up with each other.

To reassemble your device, follow these instructions in reverse order.