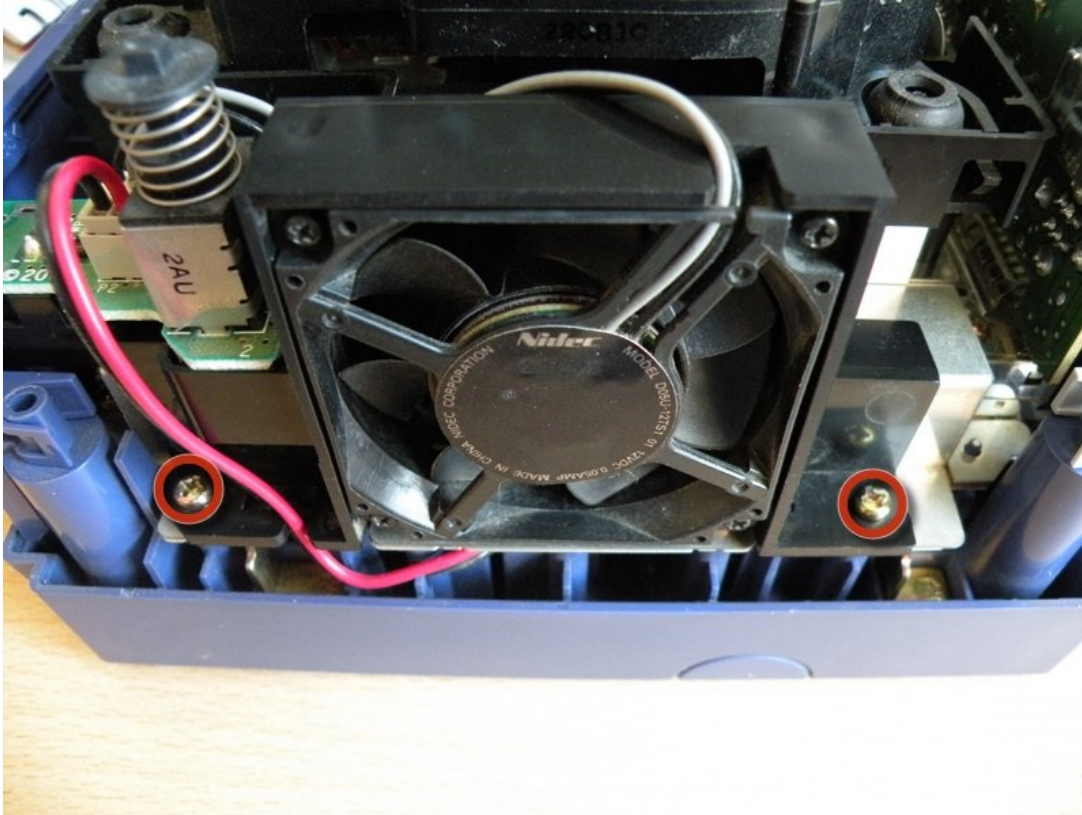




Remove Nintendo GameCube Optical Drive Assembly

This guide shows how to separate the GameCube's...

Written By: dcarlin



INTRODUCTION

This guide shows how to separate the GameCube's optical drive assembly from the motherboard.

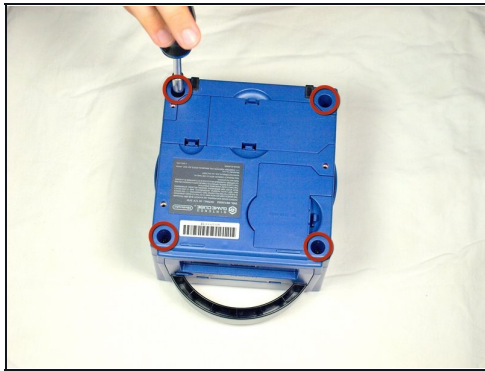
🔧 TOOLS:

Gamebit 4.5mm (1)

Phillips #1 Screwdriver (1)

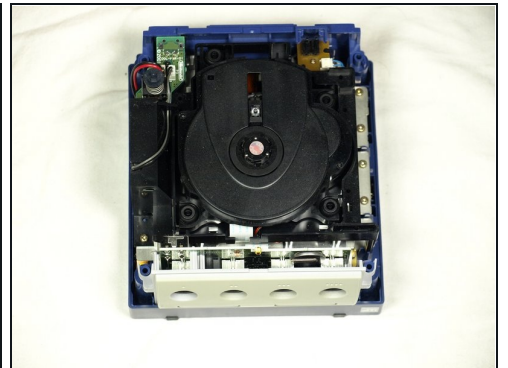
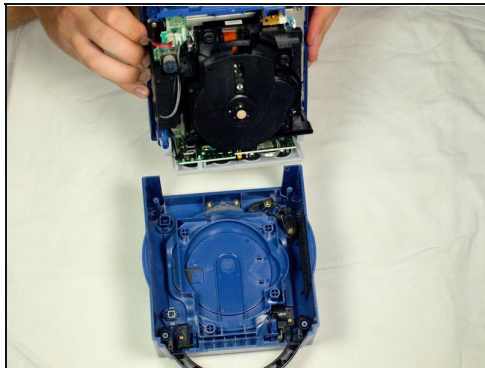
Phillips #2 Screwdriver (1)

Step 1 — Top Case



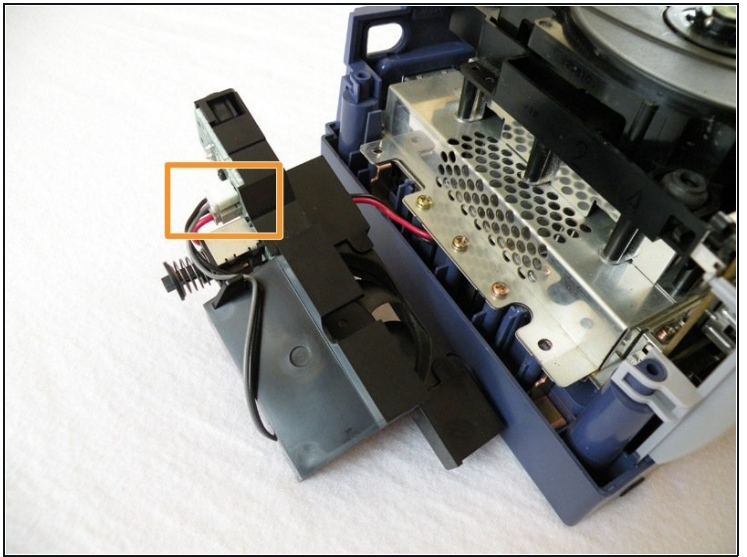
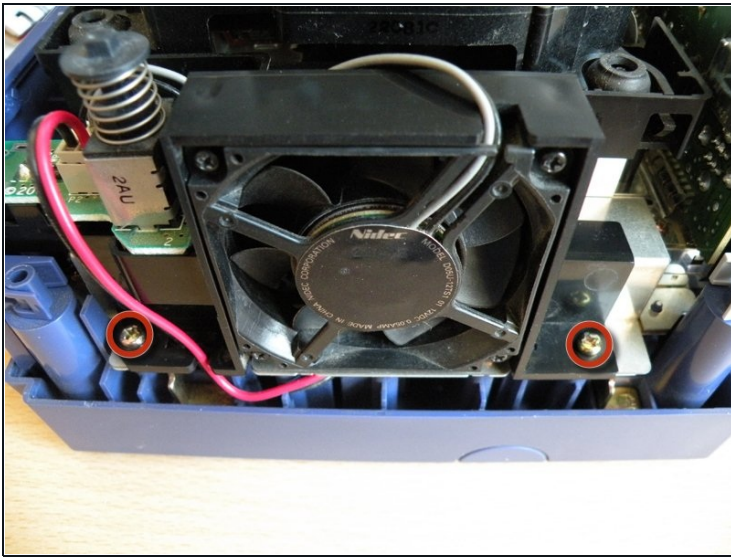
- Turn over the Gamecube so that the bottom side is facing up.
- Use the 4.5 mm Gamebit screwdriver to remove all four screws.

Step 2



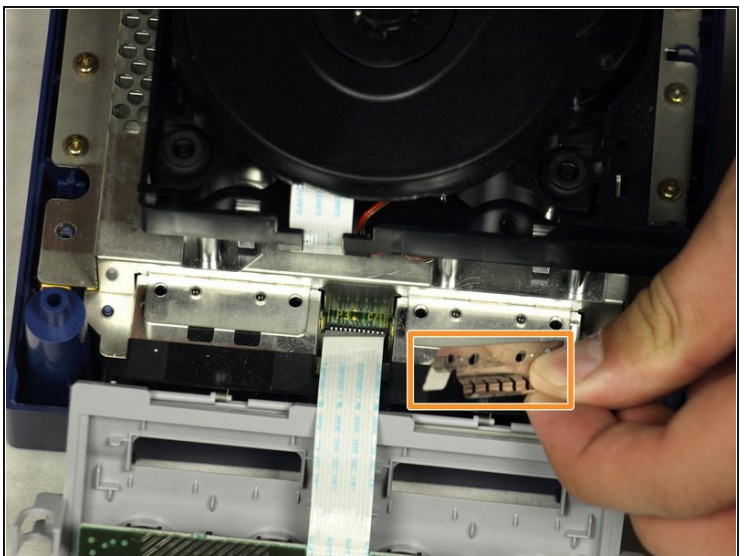
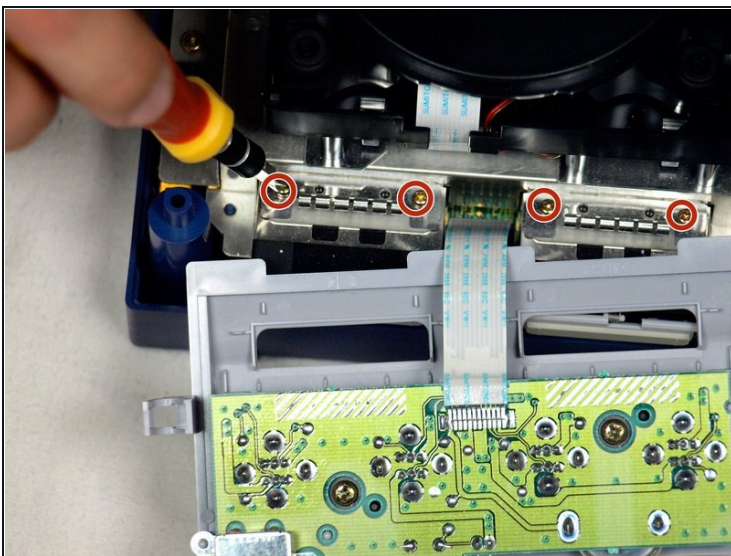
- With the bottom side of the GameCube facing upward and the screws removed, carefully pull the outer shell of the unit away from the top half.
- Move the GameCube so that the inside is facing upwards.

Step 3 — Remove Nintendo GameCube Optical Drive Assembly



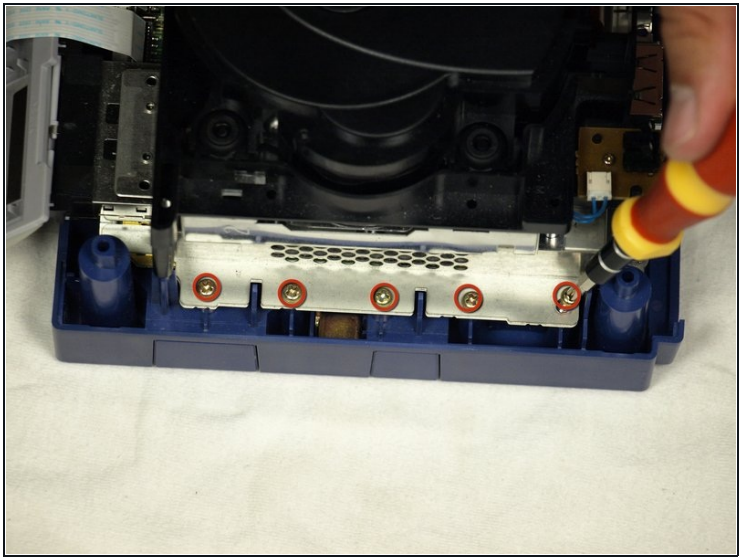
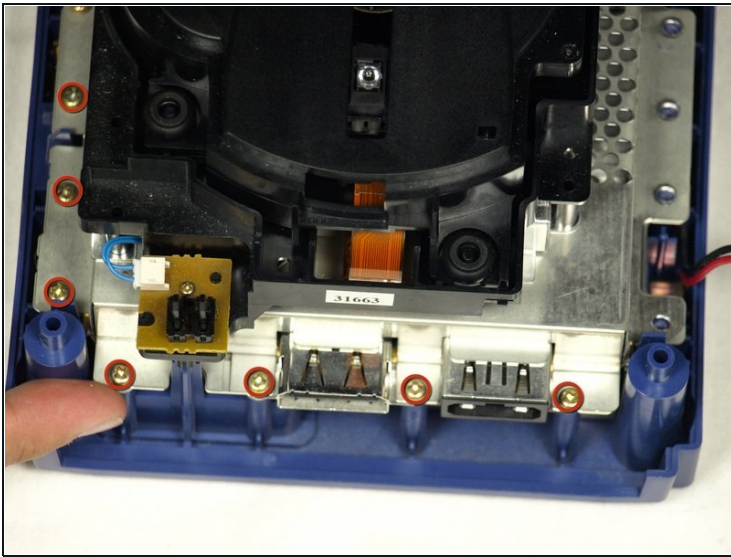
- The left side of the unit contains the cooling fan and its housing.
- Carefully remove the two screws attaching the cooling fan housing to the unit.
⚠ Do not detach the red and black cooling fan wire from the main unit. Boxed in orange.

Step 4



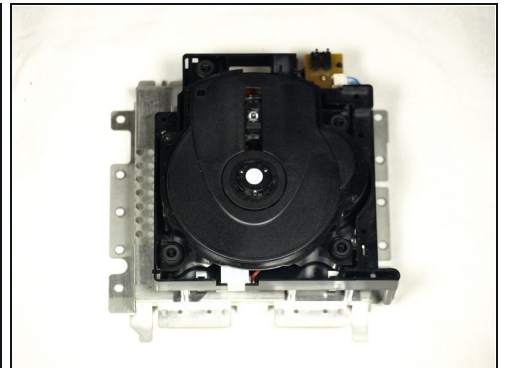
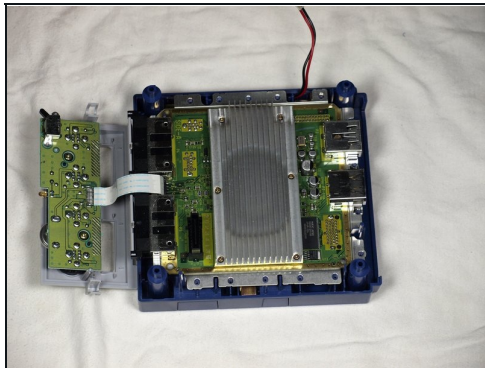
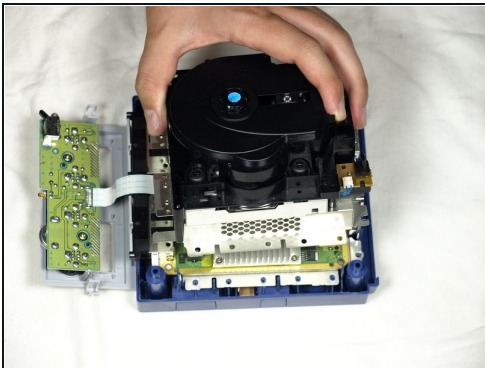
- Remove the four Phillips #1 screws retaining the ground springs.
- Carefully remove the ground springs from the main unit.

Step 5



- The optical drive is secured to a metal plate.
- Using a Phillips #2 screwdriver, unscrew the twelve screws that are around the outer edge of the optical drive.

Step 6 — Remove the assembly



- Carefully separate the optical drive assembly from the rest of the GameCube unit.
- The optical drive assembly is secured to the motherboard underneath by a slot; some force may be required to carefully free the assembly.
- The metal plate and the actual optical drive will remain attached.

To reassemble your device, follow these instructions in reverse order.

