



# Samsung Galaxy A52 Battery Replacement

Use this guide to replace a worn-out or dead...

Written By: Adriana Zwink



# INTRODUCTION

Use this guide to replace a worn-out or dead battery in your Galaxy A52.

If your battery is swollen, [take appropriate precautions](#). For your safety, **discharge your battery below 25%** before disassembling your device. This reduces the risk of a dangerous thermal event if the battery is accidentally damaged during the repair.

You'll need replacement adhesive to reattach components when reassembling the device. If you do not replace the adhesive seals when reassembling, your device will function normally, but will most likely lose its water protection.



## TOOLS:

[Phillips #00 Screwdriver](#) (1)  
[Spudger](#) (1)  
[iOpener](#) (1)  
[Suction Handle](#) (1)  
[iFixit Opening Picks \(Set of 6\)](#) (1)  
[Plastic Cards](#) (1)  
[Isopropyl Alcohol \(90% or Greater\)](#) (1)  
[Heat Gun](#) (1)  
[Microfiber Cleaning Cloths](#) (1)



## PARTS:

[Tesa 61395 Tape](#) (1)  
[iFixit Adhesive Remover](#) (1)

---

## Step 1 — Heat the back cover



- [Prepare an iOpener](#) and apply it to the back cover for at least two minutes to loosen the adhesive underneath.
- ⓘ A hair dryer, heat gun, or hot plate may also be used, but be careful not to overheat the phone—the display and internal battery are both susceptible to heat damage.

## Step 2 — Insert an opening pick



- Secure a suction handle to the right edge of the back cover, as close to the edge as possible.
  - ① If the back cover is damaged, the suction handle may not stick. Try [lifting it with strong tape](#), or superglue the suction handle in place and allow it to cure so you can proceed.
- Lift the back cover with the suction handle to create a small gap between the back cover and the frame.
  - ① In case you have trouble creating a gap, apply more heat to further soften the adhesive. Follow the [iOpener](#) instructions to avoid overheating.
- Insert an opening pick into the gap you created.

### Step 3 — Slice the adhesive



- Slide the opening pick to the top right corner to slice the adhesive.
- Leave the opening pick in its place to prevent the adhesive from resealing.

### Step 4



- Insert a second opening pick underneath the top right edge of your phone.
- Slide the opening pick to the bottom right corner to slice the adhesive.
- Leave the opening pick in place to prevent the adhesive from resealing.

## Step 5



ⓘ If the adhesive becomes hard to cut, it has most likely cooled down. [Use your iOpener](#) to reheat it.

- Insert a third opening pick at the bottom edge of your phone.
- Slide the opening pick along the bottom edge of your phone to slice the adhesive.
- Leave the opening pick in the bottom left corner to prevent the adhesive from resealing.



## Step 6



- Insert a fourth opening pick underneath the bottom left corner of your phone.
- Slide the opening pick along the left edge to slice the adhesive.
- Leave the opening pick in the top left corner to prevent the adhesive from resealing.

## Step 7



- Insert a fifth opening pick underneath the top left corner.
- Slide the opening pick along the top edge of the back cover to slice the remaining adhesive.

## Step 8 — Remove the back cover



- Remove the back cover.
- ★ Apply new adhesive where necessary after cleaning the relevant areas with isopropyl alcohol (>90%).
- ★ [Secure the new back cover with pre-cut adhesive](#) or double-sided adhesive tape. After installing the back cover, apply strong, steady pressure to your phone for several minutes to help the adhesive form a good bond—a stack of heavy books works well.

## Step 9 — Unscrew the motherboard cover



- Use a Phillips screwdriver to remove the ten 4.4 mm-long screws securing the motherboard cover.

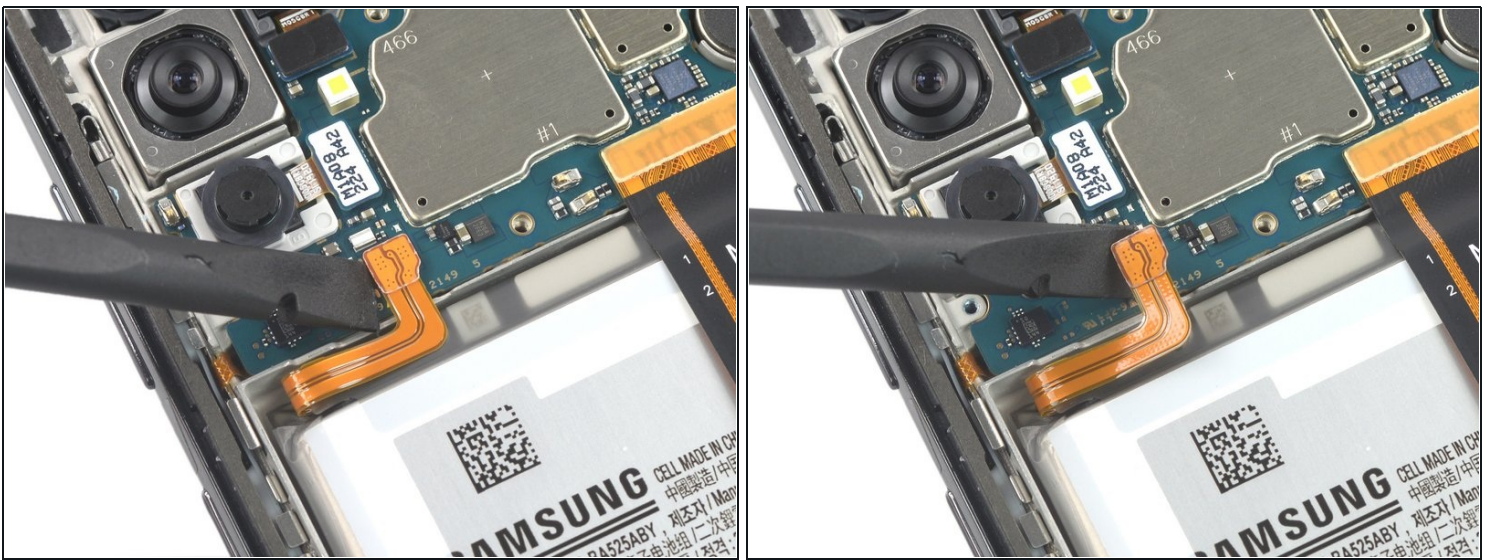


## Step 10 — Pry up the motherboard cover



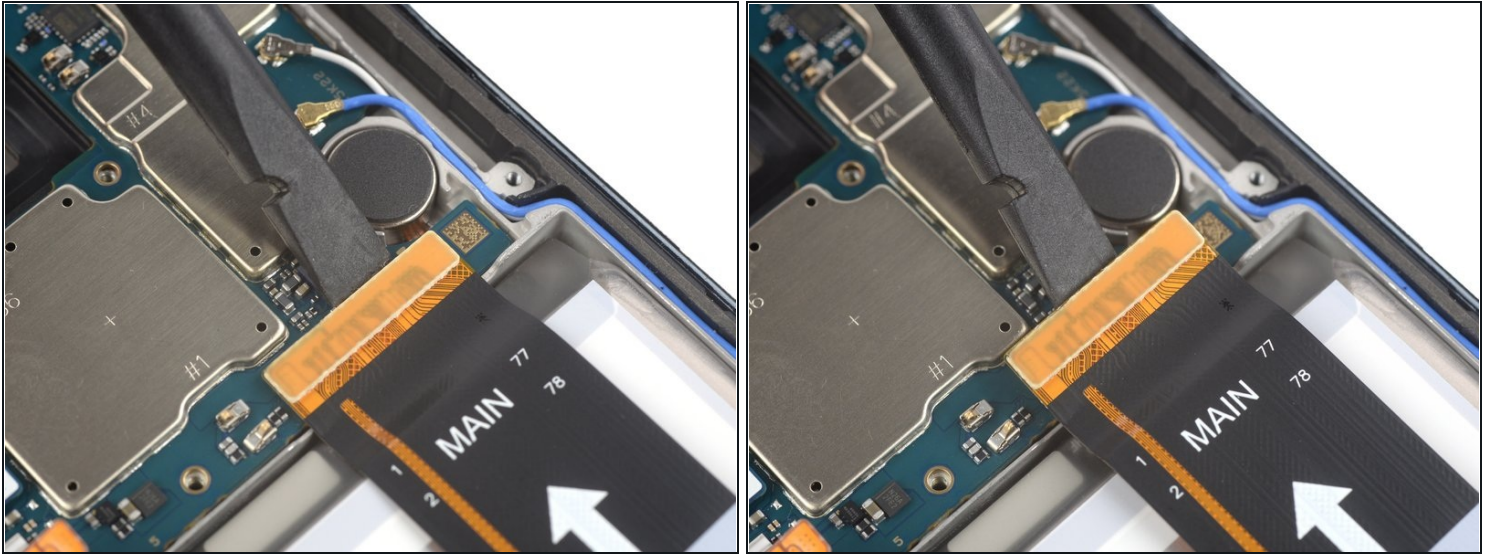
- Insert an opening pick underneath the left edge of the motherboard cover.
- Use the opening pick to pry up the motherboard cover.
- Remove the motherboard cover.

## Step 11 — Disconnect the battery



- Use a spudger to disconnect the battery cable by prying the connector straight up from its socket.

## Step 12 — Disconnect the interconnect cable



- Use the flat end of a spudger to pry up and disconnect the interconnect cable from its socket.

## Step 13 — Free the battery



**⚠ During the following step do not fold the cable sharply and only bend it to avoid damaging the cable.**

- Bend the interconnect flex cable towards the charging port in order to get free access to the battery.
- ① You might want to use a small piece of tape to temporarily stick the cable onto your working surface to avoid accidentally damaging it during the battery removal.

## Step 14 — Apply adhesive remover



⚠ Follow these [preparation steps](#) before using adhesive remover.

- Apply a few drops of adhesive remover or high-concentration (90% or higher) isopropyl alcohol into the gap at the left edge of the battery.
- Tilt the phone in an 45 degree angle to let spread the isopropyl alcohol evenly underneath the battery.
- Let the adhesive remover penetrate the battery adhesive for at least 1 minute.



## Step 15 — Pry up the battery



- For this step, insert a [plastic card](#) into the edge with a wider gap between the midframe and the battery so that you have more space for the plastic card and get a better leverage.
  - Carefully slide it underneath the battery to loosen the adhesive.
  - Slide the plastic card underneath and pry up the battery from its recess.
- ⓘ The battery should come off easily. In case the battery is still sticky, repeat the previous adhesive remover procedure or use an iOpener to further soften the battery adhesive.



## Step 16 — Remove the battery



- Remove the battery.

**⚠ Do not reinstall a damaged or deformed battery, as doing so is a potential safety hazard.**

- ☑ Before installing a new battery remove any remaining adhesive, and clean the glued areas with isopropyl alcohol and a lint-free cloth.
- ☑ During reassembly, [follow this guide](#) if you're using a pre-cut adhesive card.
- ☑ If there's any alcohol solution remaining in the phone, carefully wipe it off or allow it to air dry before installing your new battery.
- ☑ During reassembly, temporarily reconnect the battery to the motherboard to help align it correctly. Disconnect the battery after it is seated.

---

If possible, turn on your device and test your repair before installing new adhesive and resealing.

**To reassemble your device, follow these instructions in reverse order.** Apply new adhesive where necessary after cleaning the relevant areas with isopropyl alcohol (>90%).

For optimal performance, **calibrate your newly installed battery**: Charge it to 100% and keep charging it for at least 2 more hours. Then use your device until it shuts off due to low battery. Finally, charge it uninterrupted to 100%.

Take your e-waste to an [R2 or e-Stewards certified recycler](#).

Repair didn't go as planned? Try some [basic troubleshooting](#), or ask our [Answers community](#) for help.