



# 2011-2015 Hyundai Vera Cruz Replacement

This guide will show someone how to replace the internal car door handle on their car.

Written By: Haley Pruitt



## INTRODUCTION

If the internal car door handle is broken on your 2011 Hyundai Vera Cruz, use this guide to replace the door handle and locking mechanism. Without a functional door handle, the car door might be unable to open from the inside or the outside.



### TOOLS:

- [Phillips #0 Screwdriver](#) (1)
- [Flathead 3/32" or 2.5 mm Screwdriver](#) (1)



### PARTS:

- [New car door handle](#) (1)

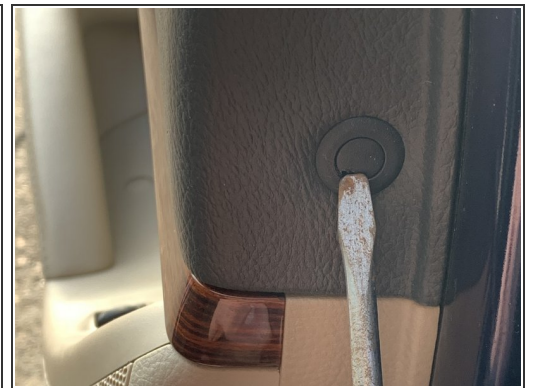
## Step 1 — Internal Car Door Handle



- Open the car door.

**i** If the door does not open easily, have someone hold the exterior handle open and push the door from the inside of the car. This should allow the door to open with little resistance.

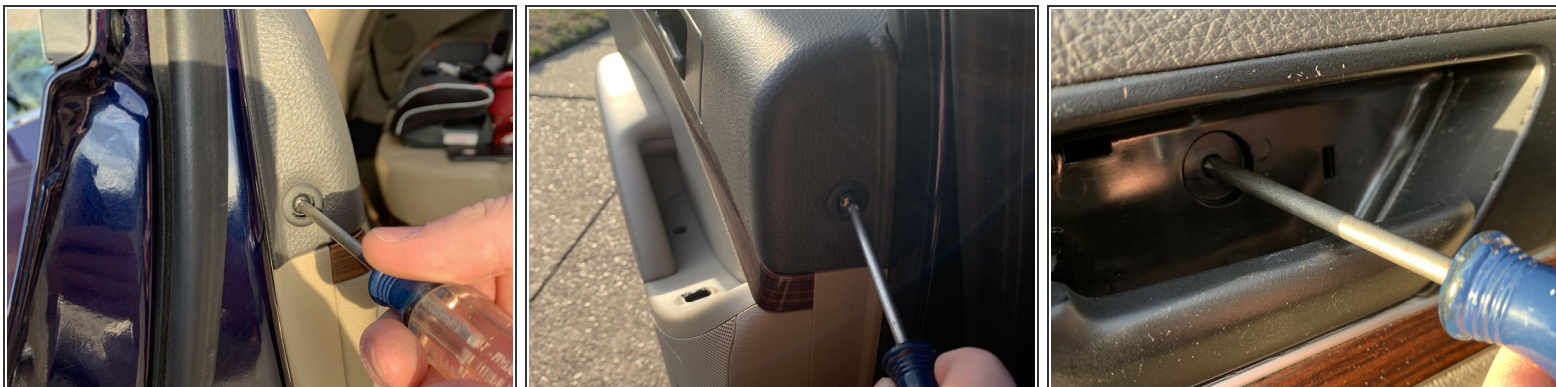
## Step 2



- Locate and remove the four caps that cover the screws.

**i** Once the caps are removed, keep them because they will be reinstalled at the end.

### Step 3



- Unscrew the four screws that were uncovered by the caps in step 2.
- ⓘ Keep the screws because they will be reinstalled at the end.

### Step 4



- After removing all four screws, remove the small triangular plastic piece above the door panel by using a flat head screwdriver and prying the piece up.

## Step 5

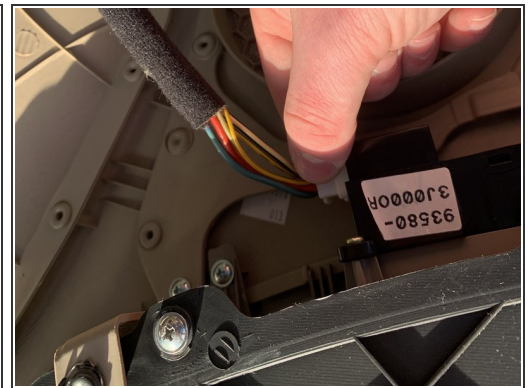
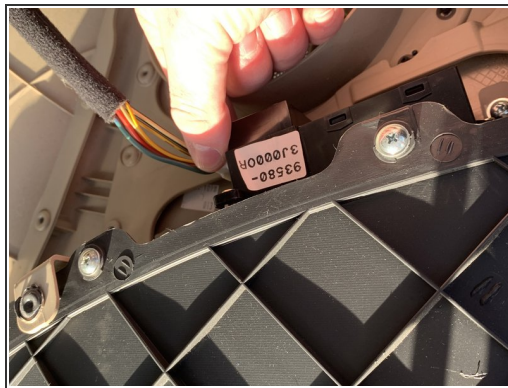


- Using a flathead screwdriver, remove the door panel by prying it off the door frame

**⚠** It is best to pry the door panel off from bottom to top to prevent breaking it.

- ❗ Once the door panel is removed, set it aside safely.

## Step 6



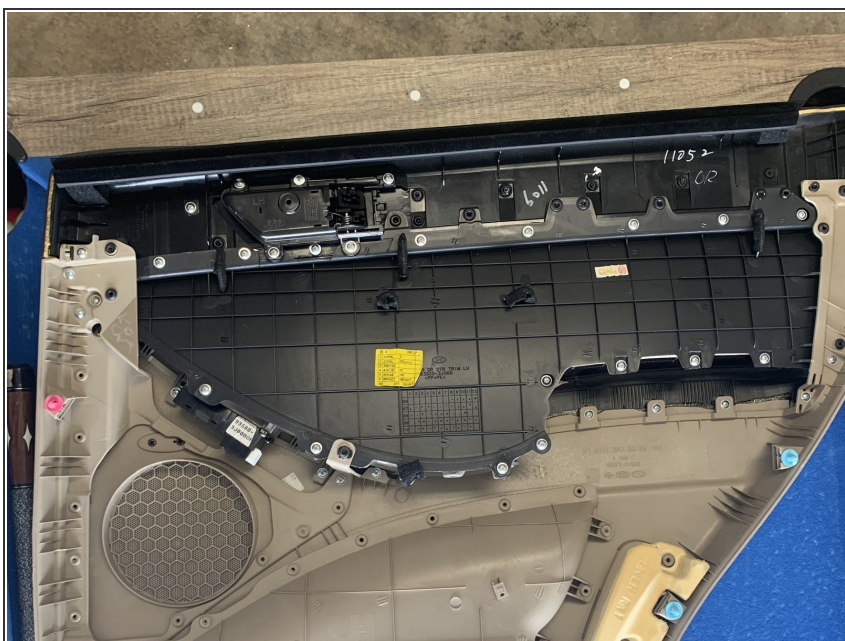
- Once the door panel is completely off, the electrical connection in the door frame must be disconnected and removed.

## Step 7



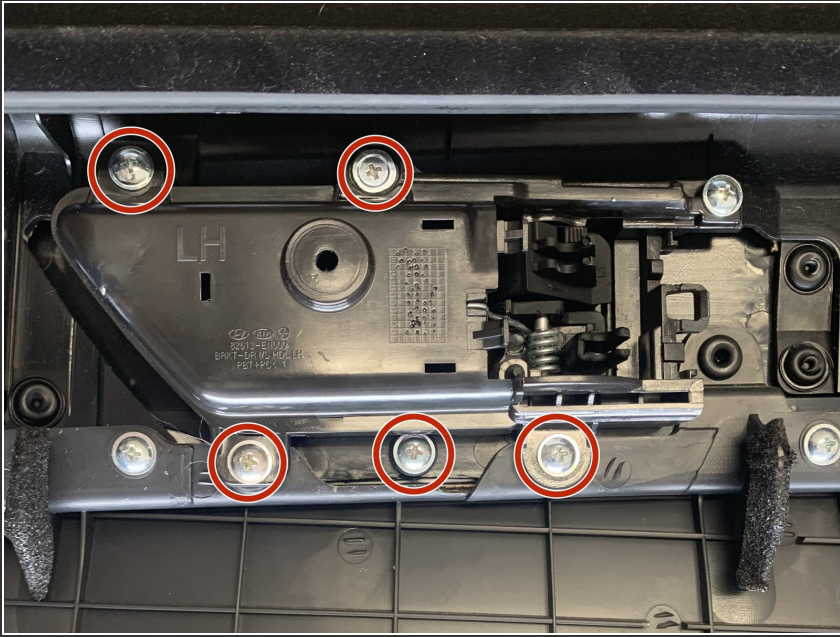
- After removing the electrical connection, the locking mechanism of the door handle must be removed. This can be done by pressing the tab located on the back of the door handle mechanism.

## Step 8



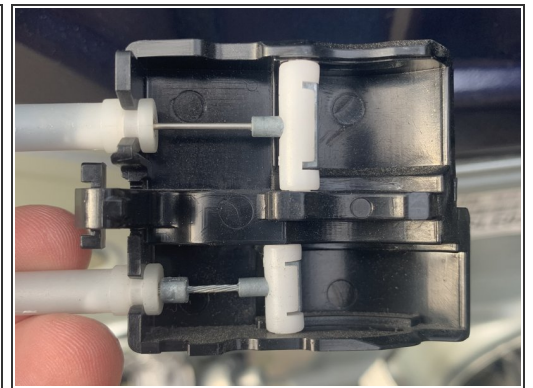
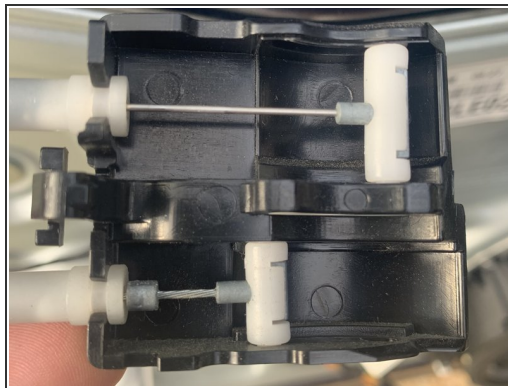
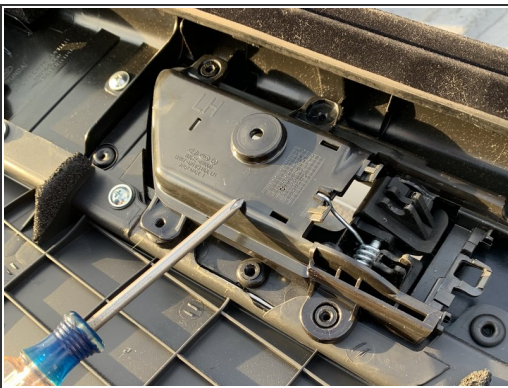
- After the door panel is fully disconnected, it should be set on a flat surface with the screw side face up.

## Step 9



- Then, the five screws holding the door handle to the door panel must be located and unscrewed.
- ⓘ The screws should be kept because they will be reinstalled at the end.

## Step 10



- The new locking mechanism can be connected in the same place the old one was removed from.
- ⓘ For the new mechanism to work, it must be installed in the unlocked position.
- ⓘ Make sure the door handle works before putting the door panel back on the frame and replacing all the screws.

To reassemble your device, follow these instructions in reverse order.