



# Syntus ST150 Ultrasonic Plate Replacement

This guide will show you how to correctly replace an ultrasonic plate on your Syntus Ultrasonic Diffuser.

Written By: Alejandro R. Calderin Anzueta



## INTRODUCTION

An ultrasonic plate in an essential oil diffuser is an electric component that vibrates at a very fast rate, creates a mist with water and essential oils, and disperses the mist into the air. A typical ultrasonic plate lasts around 5000 hours, but when it is damaged it has to be replaced. This guide will show you how to disassemble and replace the ultrasonic plate of your Syntus Ultrasonic Diffuser model number ST150.

Before beginning the repair, be sure to unplug the power adapter.



### TOOLS:

- [Phillips #1 Screwdriver](#) (1)
  - [Phillips #0 Screwdriver](#) (1)
-

## Step 1 — Ultrasonic Plate



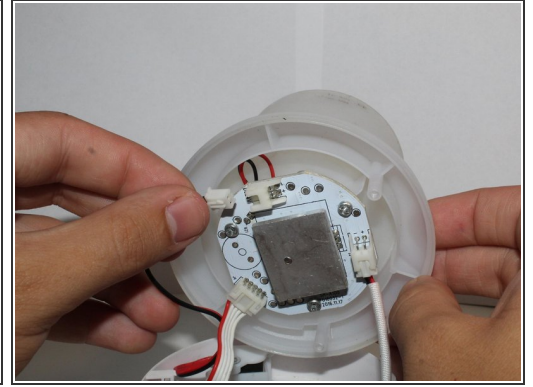
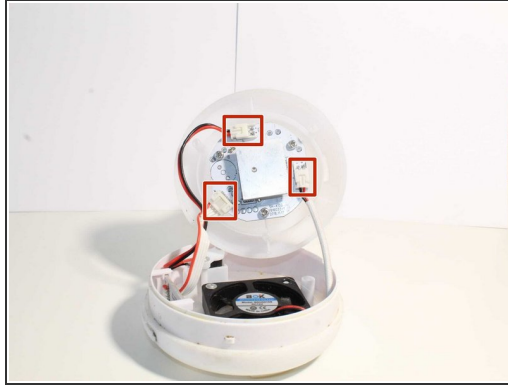
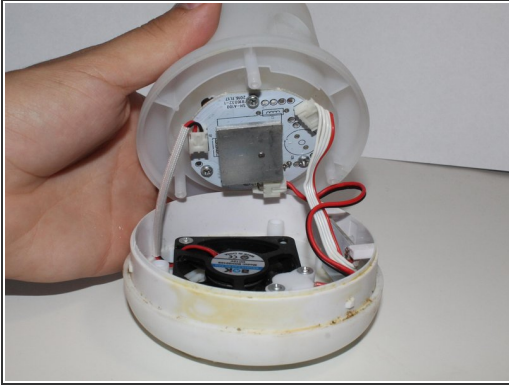
- ⚠ First, make sure the water tank inside the diffuser is completely dry to avoid any water from contacting the internal components.
- ⚠ Make sure the diffuser is disconnected from the power source to avoid electrical hazards.

## Step 2



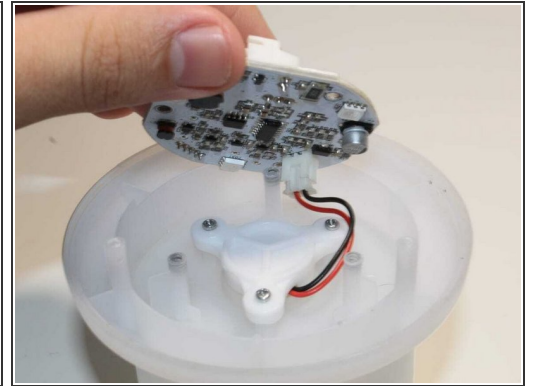
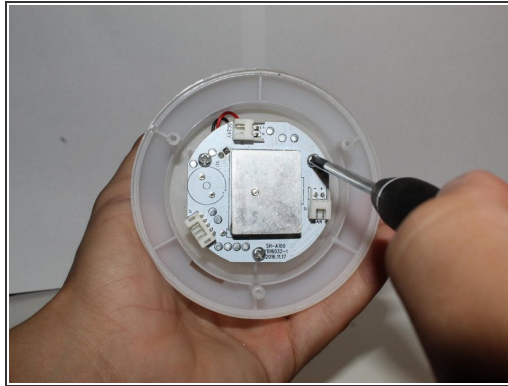
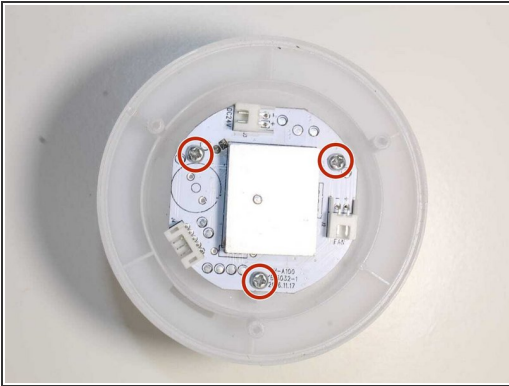
- With a Phillips #1 screwdriver, remove the three 10 mm screws on the bottom of the diffuser.

## Step 3



- Lift the water tank while holding the base of the diffuser.
- Disconnect the three cables from the board.
- ☑ Make sure when reassembling the diffuser to plug in each cable to its assigned port.

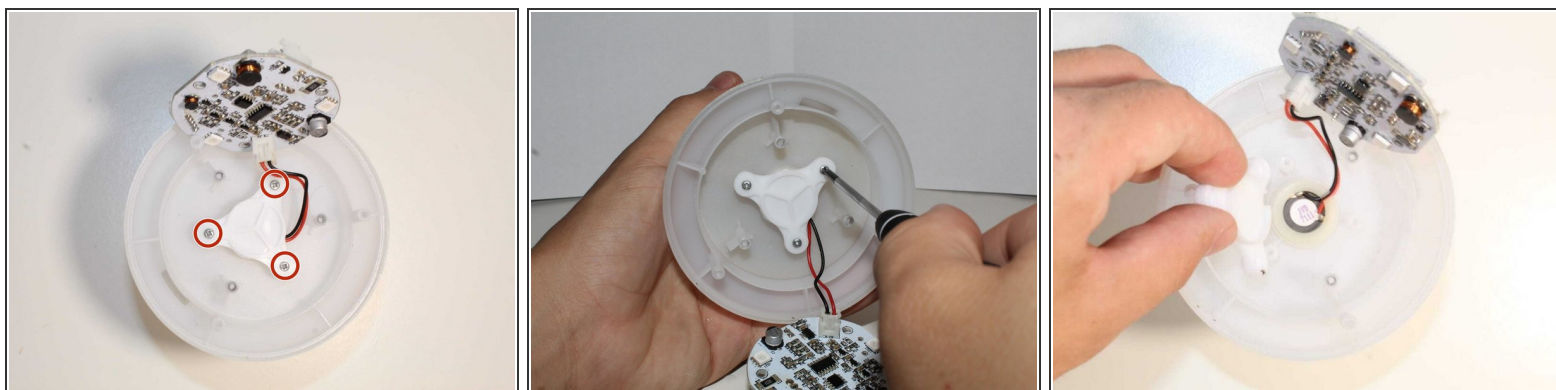
## Step 4



- To separate the board from the water tank, unscrew the three Phillips #1 10 mm screws securing the board.

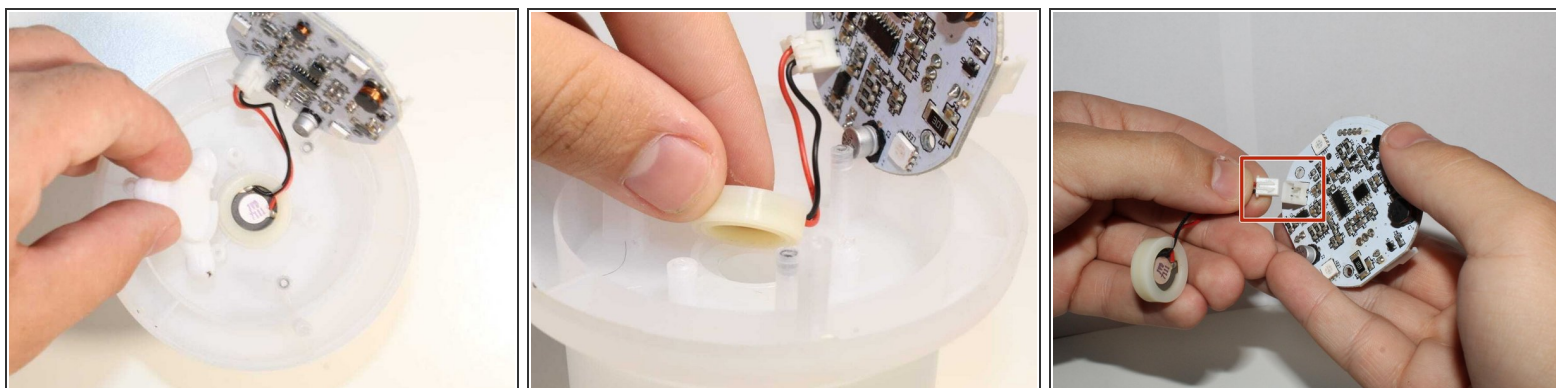


## Step 5



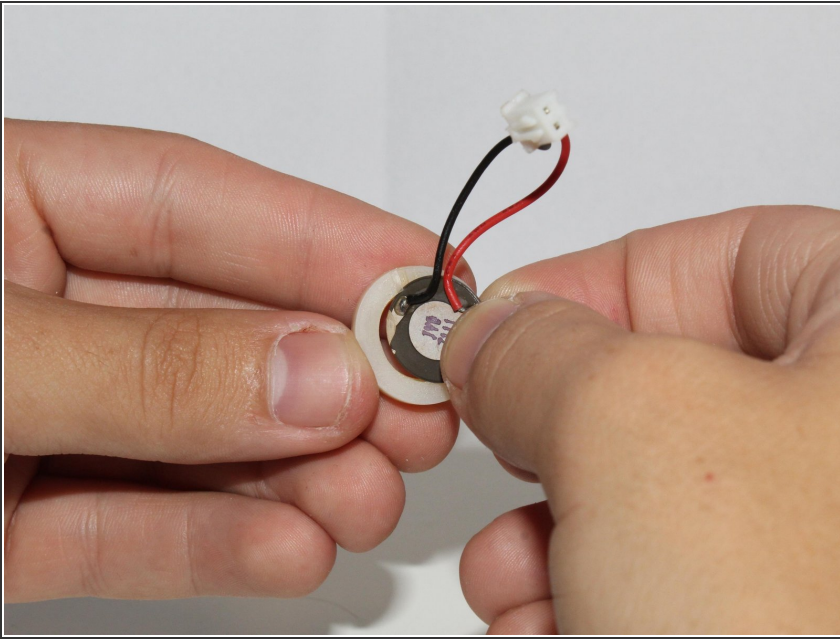
- With a Phillips #0 screwdriver, remove the three 7 mm screws from the ultrasonic sensor cover.
- Remove the cover to expose the ultrasonic sensor.

## Step 6



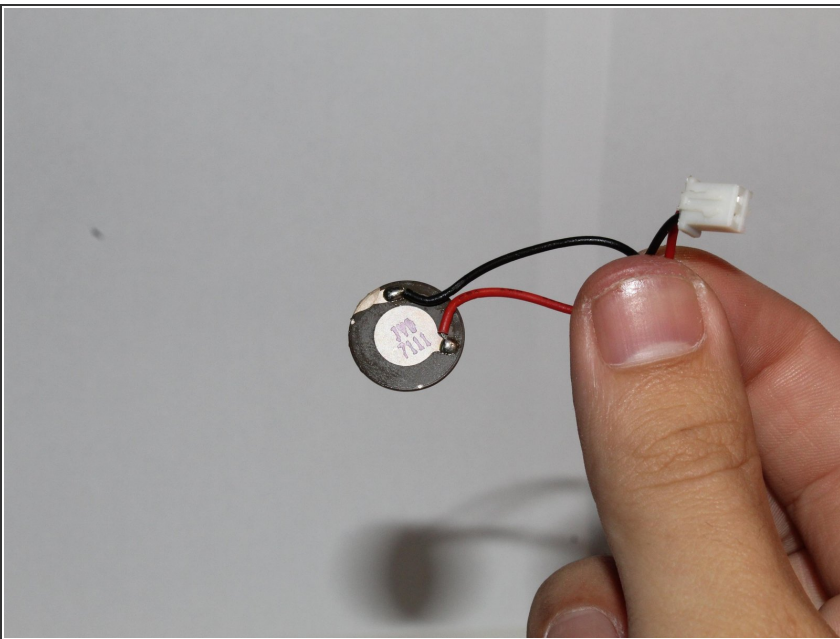
- Detach the ultrasonic sensor from the water tank.
- Detach the ultrasonic sensor connector from the board.

## Step 7



- Remove the rubber cover from the ultrasonic plate.

## Step 8



- Now you can replace the ultrasonic plate of your diffuser.

To reassemble your device, follow these instructions in reverse order.