



# DJI Mini 2 Drone Body Replacement

This guide will help you replace the plastic shell of the DJI Mini 2 drone.

Written By: Jacob Matos



---

## INTRODUCTION

We are defining the DJI Mini 2 drone body as the top and bottom plastic panels of the drone. These panels are the blockaded between the insides of the drone and the outside world.

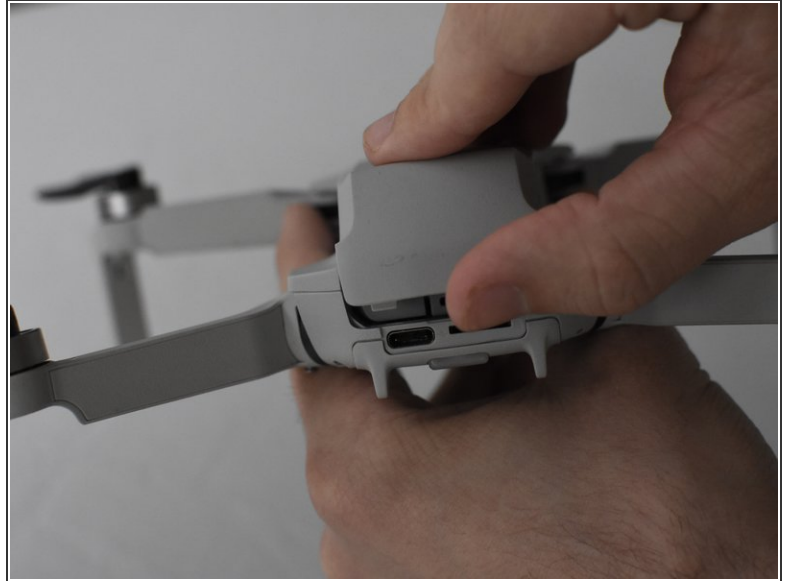
The drone body stores the inner electronic parts of the drone like the GPS, the Main Board, and the wires the drone uses. Damage to the drone body can cause the drone to be unstable in flight. If the body of the drone is damaged they will need to be [replaced](#).



### TOOLS:

- [iFixit Opening Tool](#) (1)
  - [Mako Driver Kit - 64 Precision Bits](#) (1)
-

## Step 1 — Battery



- Face the DJI Mini 2 away from you so that you are looking at the charging ports.
- Use your finger to open up the back panel.

## Step 2



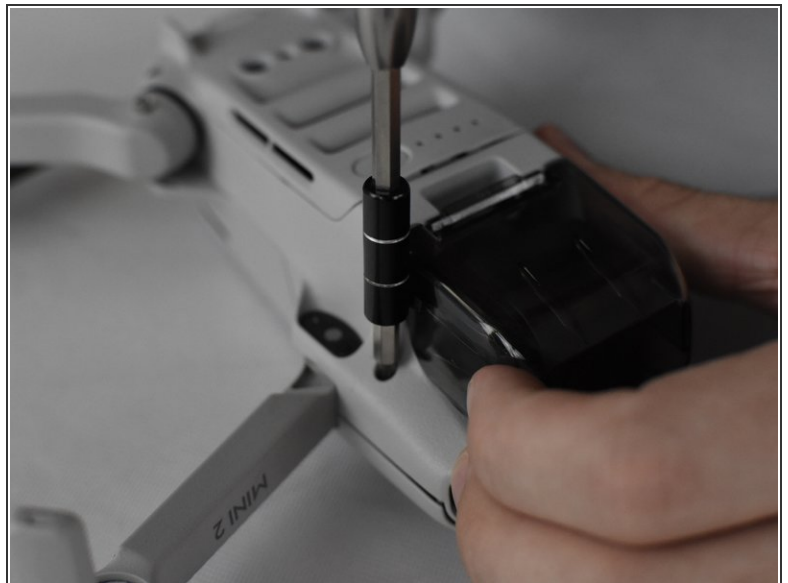
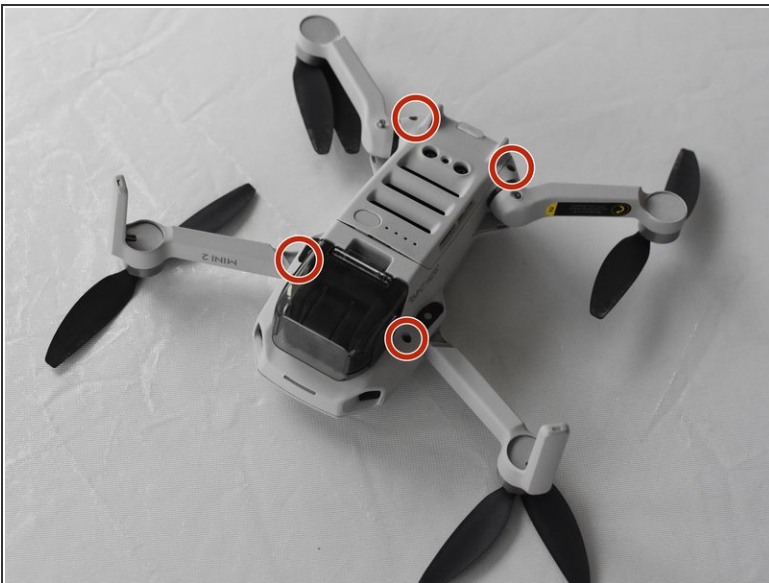
- Pinch the locking mechanism on the battery to release the lock.
- Pull the battery straight out of the compartment.

## Step 3 — Drone Body



- Unfold the wings of the drone.
- Place the drone upside down on a flat surface.
- ⓘ There should be stickers on the device telling you how to unfold the propeller arms.

## Step 4



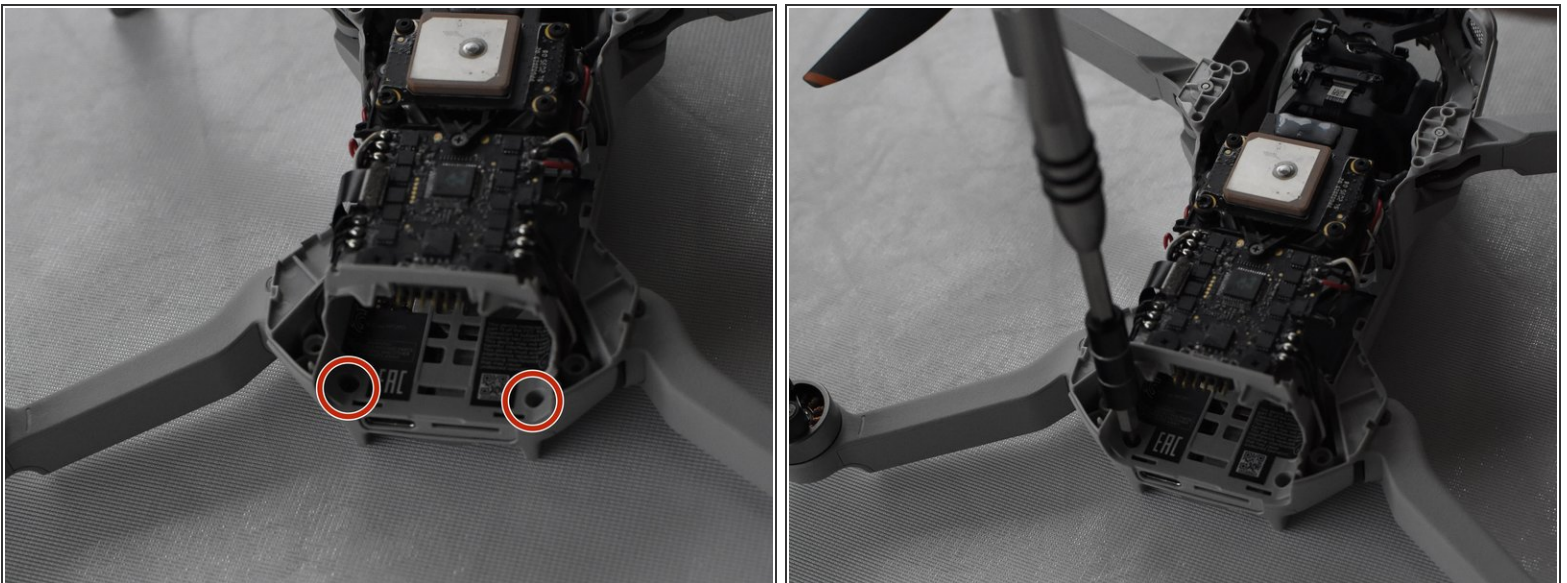
- Remove the four 5 mm J000 screws near each propeller arm.

## Step 5



- Flip the drone back over.
- Use a combination of the opening tool and your fingers to pry open the top panel of the drone along the seams.

## Step 6



- Remove the two 5 mm J000 screws located in the battery hatch and near the ports on the back of the drone.

## Step 7



- Flip the drone over again.
- Pry off the bottom panel of the drone using the opening tools and your fingers.

To reassemble your device, follow these instructions in reverse order.