



DJI Mini 2 Gimbal Camera Replacement

This guide will show you how to successfully...

Written By: Parker Sowersby



INTRODUCTION

This guide will show you how to successfully replace the gimbal assembly inside the DJI Mini 2 drone. If you need more detailed information on disassembling the gimbal camera to replace the camera cable or replace the gimbal housing, watch the video guide.

The Gimbal Camera is the camera that allows the drone to capture video and photos. It also can rotate in place to allow for multiple angles for the photos the drone can take. If the Gimbal Camera is broken or damaged this will prevent the drone from successfully capturing photos and videos.

This guide requires the use of ESD-safe tools.

If you have replaced the gimbal assembly, you will need to calibrate your DJI Mini 2 drone, but for gimbal calibration, you will need to use additional software.

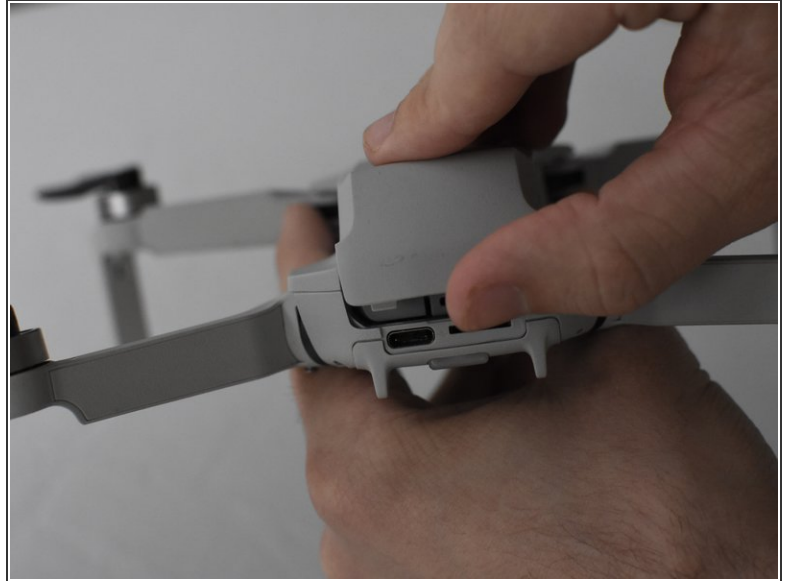
How to calibrate the gimbal camera watch this video tutorial <https://youtu.be/mu03HWXpIM4>

[video: <https://www.youtube.com/watch?v=89YAWrz6WF0>]

TOOLS:

- [iFixit Opening Tool](#) (1)
 - [Mako Driver Kit - 64 Precision Bits](#) (1)
 - [ESD Safe Tweezers Blunt Nose](#) (1)
-

Step 1 — Battery



- Face the DJI Mini 2 away from you so that you are looking at the charging ports.
- Use your finger to open up the back panel.

Step 2



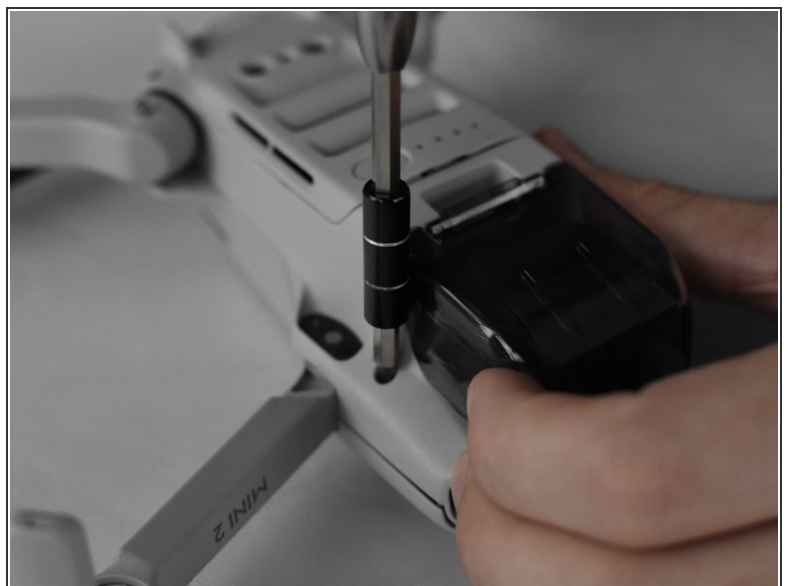
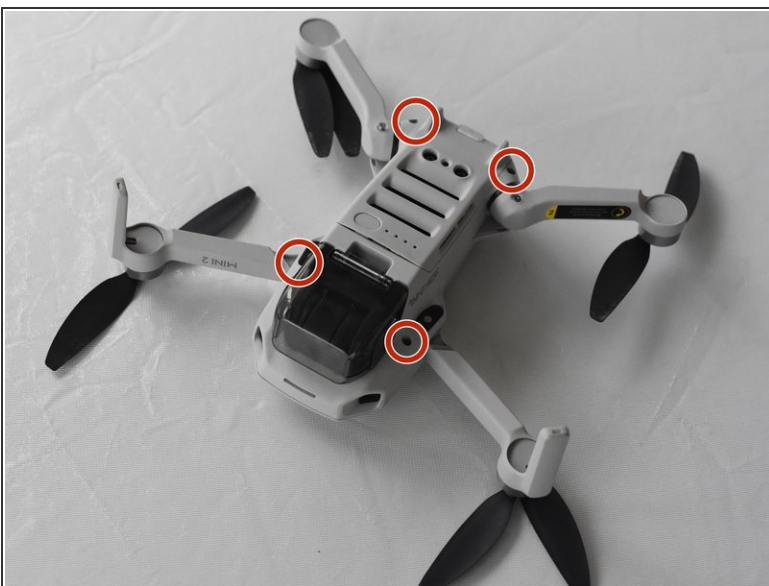
- Pinch the locking mechanism on the battery to release the lock.
- Pull the battery straight out of the compartment.

Step 3 — Drone Body



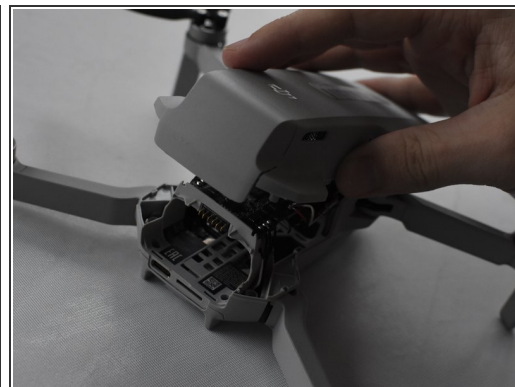
- Unfold the wings of the drone.
- Place the drone upside down on a flat surface.
- ⓘ There should be stickers on the device telling you how to unfold the propeller arms.

Step 4



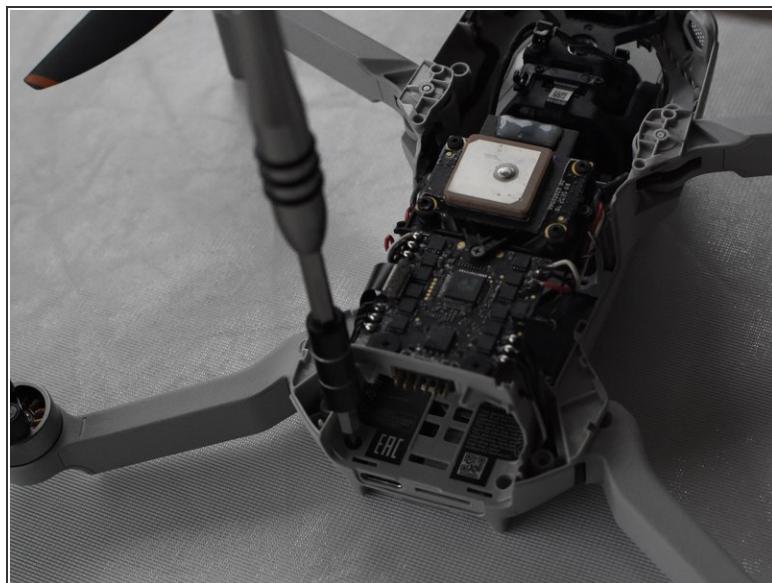
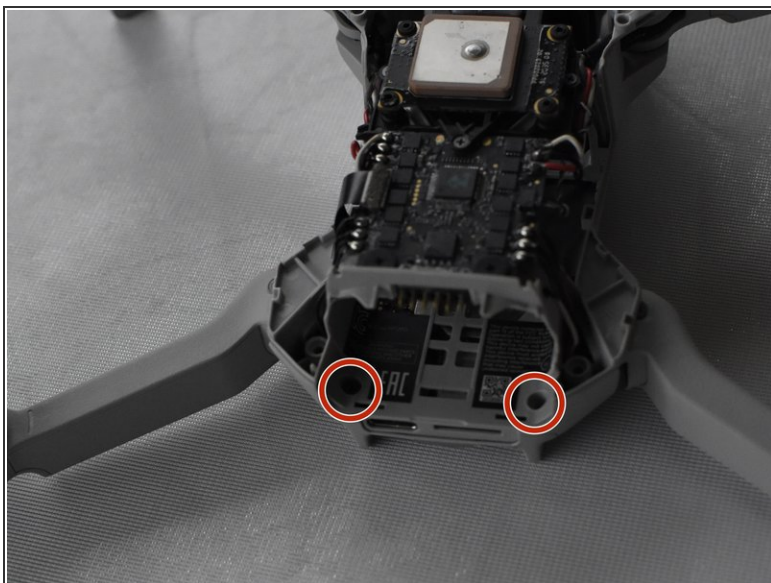
- Remove the four 5 mm J000 screws near each propeller arm.

Step 5



- Flip the drone back over.
- Use a combination of the opening tool and your fingers to pry open the top panel of the drone along the seams.

Step 6



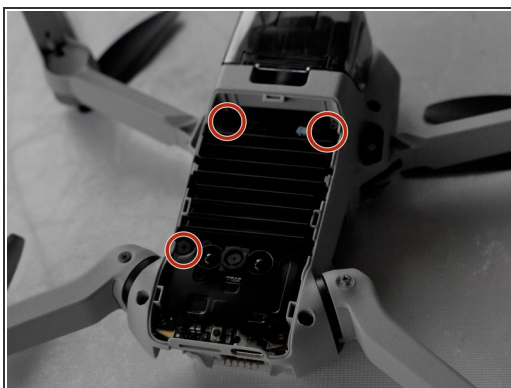
- Remove the two 5 mm J000 screws located in the battery hatch and near the ports on the back of the drone.

Step 7



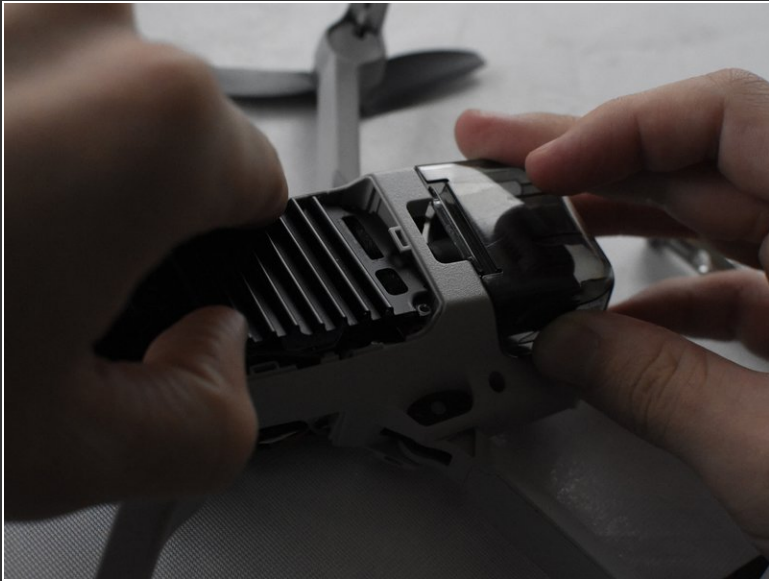
- Flip the drone over again.
- Pry off the bottom panel of the drone using the opening tools and your fingers.

Step 8 — Main Board



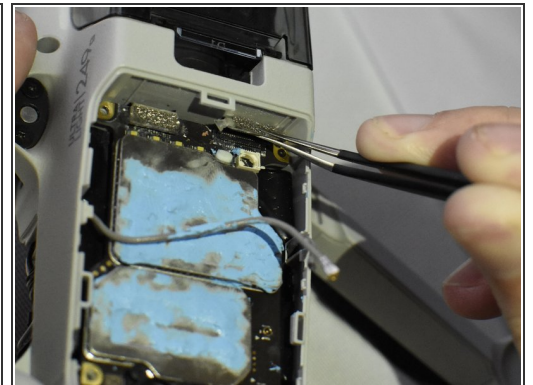
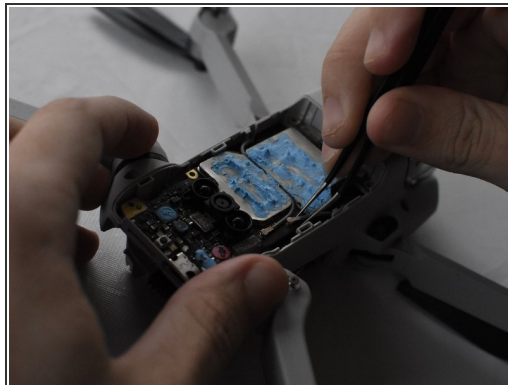
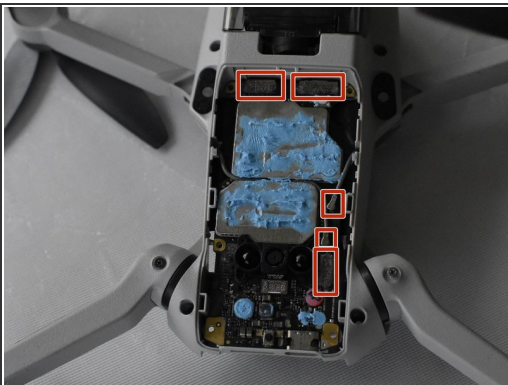
- Remove the three 3mm J000 screws on the black plate.

Step 9



- Use your fingers to pull the black plate off to reveal main board.

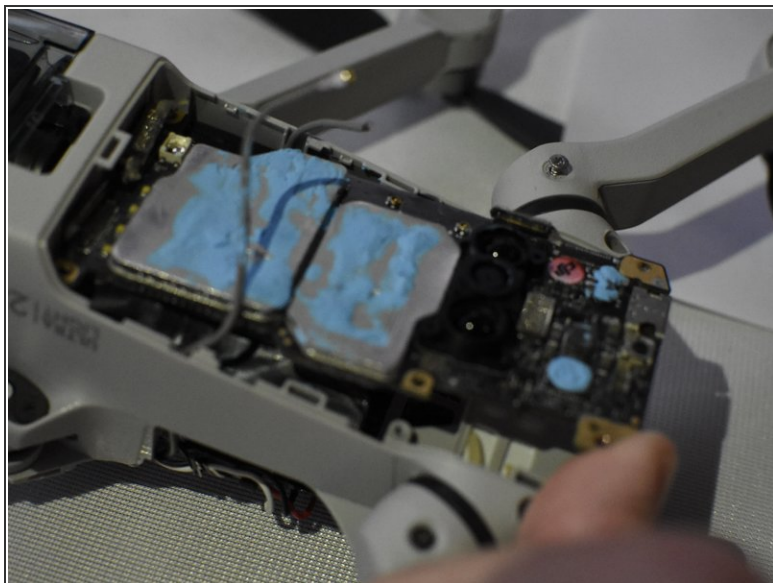
Step 10



⚠ Try to avoid disturbing the blue thermal paste covering two of the large board components. If the paste is disturbed or splotchy in places it may need to be removed and reapplied. For more information refer to the [How to Apply Thermal Paste guide](#).

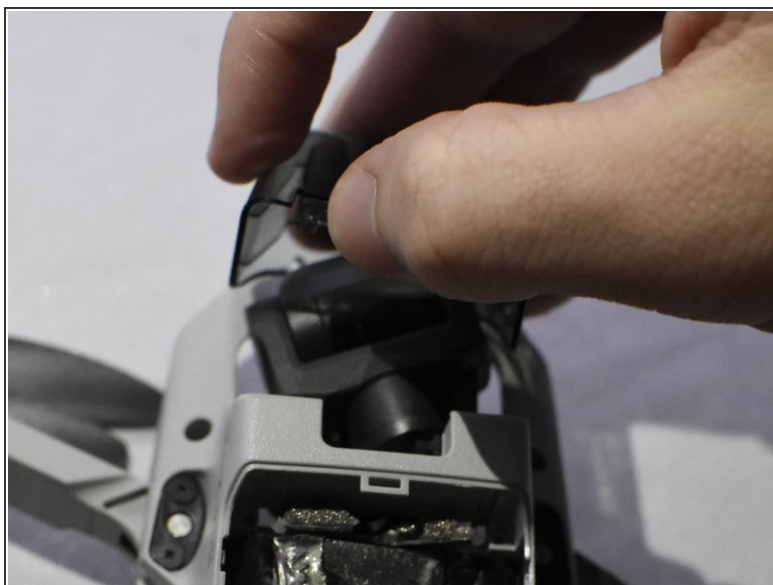
- Using ESD Safe Tweezers Blunt Nose, remove the 5 cables attached to the main board.

Step 11



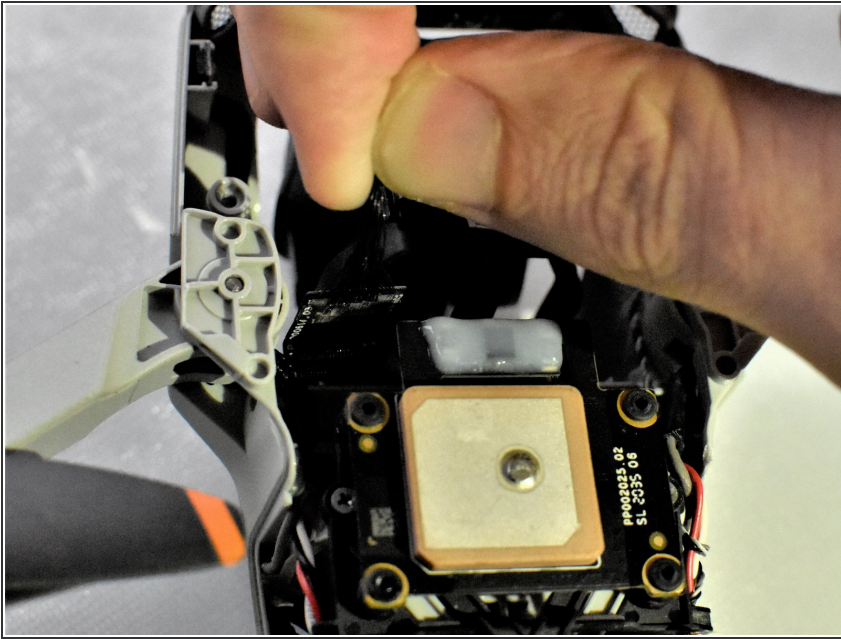
- Use the ESD Safe Tweezers Blunt Nose and your fingers to pull off the main board from the drone carriage.

Step 12 — Gimbal Camera



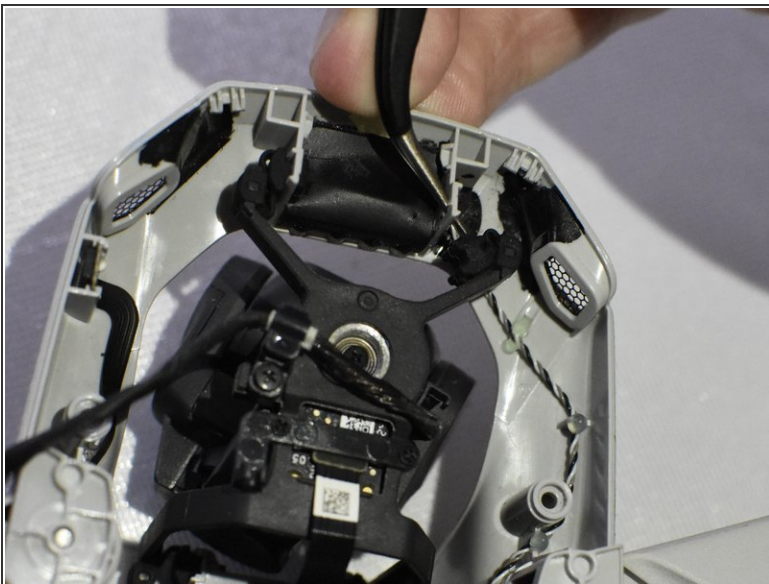
- Use your hands to remove the camera cover.

Step 13



- Pull the cable that was once attached to the mainboard and attaches to the camera through the main body.

Step 14



- Use the tweezers to pull the four rubber camera holsters off of the body.

Step 15



- Using the J000 screwdriver, remove the two remaining 3 mm screws connecting the camera to the body.
- Remove the camera.

To reassemble your device, follow these instructions in reverse order.