



iPad Mini 6 Speaker Assembly Replacement

How to replace one or both speakers in your iPad mini 6.

Written By: Alex Diaz-Kokaisl



INTRODUCTION

Use this guide to replace one or both speakers in your iPad mini 6.

You'll need replacement adhesive in order to complete this repair.

TOOLS:

- [Safety Glasses](#) (1)
- [Packing Tape](#) (1)

Optional

- [iOpener](#) (1)
 - [iFixit Opening Picks \(Set of 6\)](#) (1)
 - [Spudger](#) (1)
 - [Phillips #000 Screwdriver](#) (1)
 - [ESD Safe Tweezers Blunt Nose](#) (1)
-

Step 1 — Apply tape to a cracked screen



- If your display glass is cracked, keep further breakage contained and prevent bodily harm during your repair by taping the glass.
- Lay overlapping strips of clear packing tape over the iPad's display until the whole face is covered.
 - ⓘ This will keep glass shards contained and provide structural integrity when prying and lifting the display.
- Do your best to follow the rest of the guide as described. However, once the glass is broken, it will likely continue to crack as you work, and you may need to use a metal prying tool to scoop the glass out.

⚠ Wear safety glasses to protect your eyes, and be careful not to damage the LCD screen.

Step 2 — Heat the bottom edge



⚠ Completely power off your device before you begin.

- Apply a [heated iOpener](#) to the bottom edge of the device for 90 seconds to loosen the adhesive underneath.
- i** A hair dryer, heat gun, or hot plate may also be used, but be careful not to overheat the device.

Step 3 — Screen removal information



- While you're waiting for the adhesive to loosen, note the following:
 - The areas at the top and bottom of the screen are sensitive to prying.
⚠ Don't insert a pick more than 3 mm to avoid damaging the screen.
 - There's a long circuit board attached to the screen that sits parallel to the left edge.
⚠ Don't insert a pick more than 1.5 mm to avoid damaging the circuit board.
 - i** The first two images are mirrored for demonstration purposes.

Step 4 — Insert an opening pick



- Once the screen is warm to touch, apply a suction handle to the bottom edge of the screen and as close to the edge as possible.
- Lift the screen with the suction handle to create a small gap between the screen and the frame.
- Insert an opening pick into the gap between the frame and the screen.
⚠ Don't insert the pick more than 1.5 mm to avoid damaging the circuit board.
- Leave the opening pick in place to prevent the adhesive from resealing.

Step 5 — Separate the bottom adhesive



- Slide the pick along the bottom edge of the device towards the bottom-right corner.
- Leave the pick in to prevent the adhesive from resealing.

Step 6 — Heat the right edge



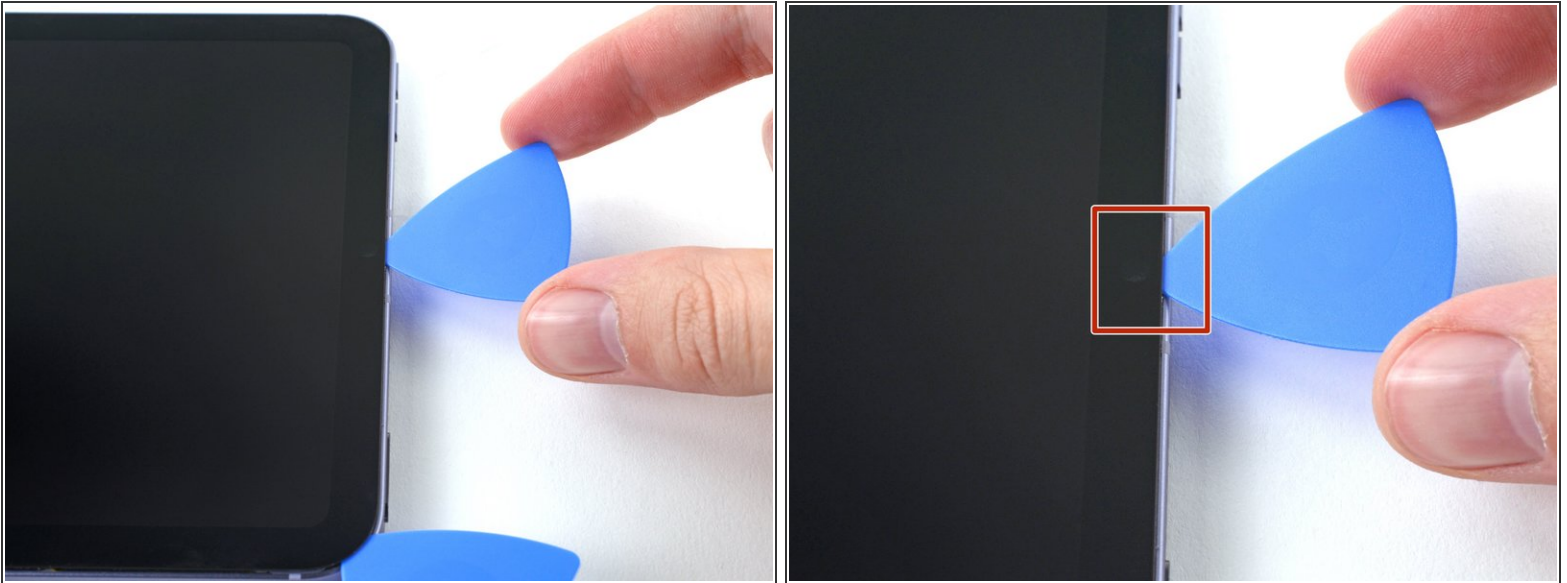
- Apply a heated iOpener to the right edge of the device for 90 seconds to loosen the adhesive underneath.

Step 7 — Separate the bottom-right corner adhesive



- Rotate the opening pick around the bottom-right corner of the device.

Step 8 — Separate the remaining adhesive




- Repeat the heating, slicing, and leaving opening picks for the remaining edges of the device.

⚠ When you slice near the front camera, don't insert the pick more than 1.5 mm to avoid damaging or smearing the camera.

Step 9 — Reposition the screen



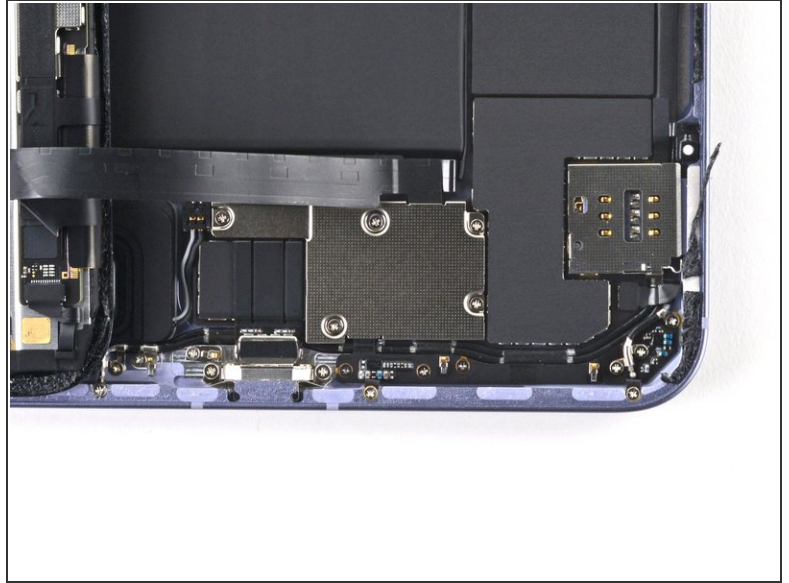
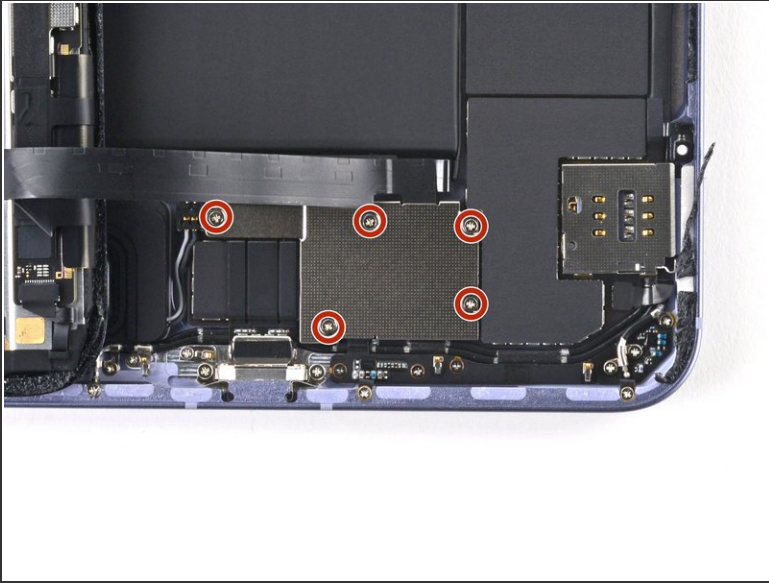
 If there's still resistance around the edges of the screen, use an opening pick to cut the adhesive again.

 **Don't try to remove the screen all the way yet; it's still connected to the frame by a flex cable.**

- With the bottom of the device facing you, pull the right edge of the screen up and towards the left edge of the device.
- Rest the screen upside down and parallel to the frame before continuing.

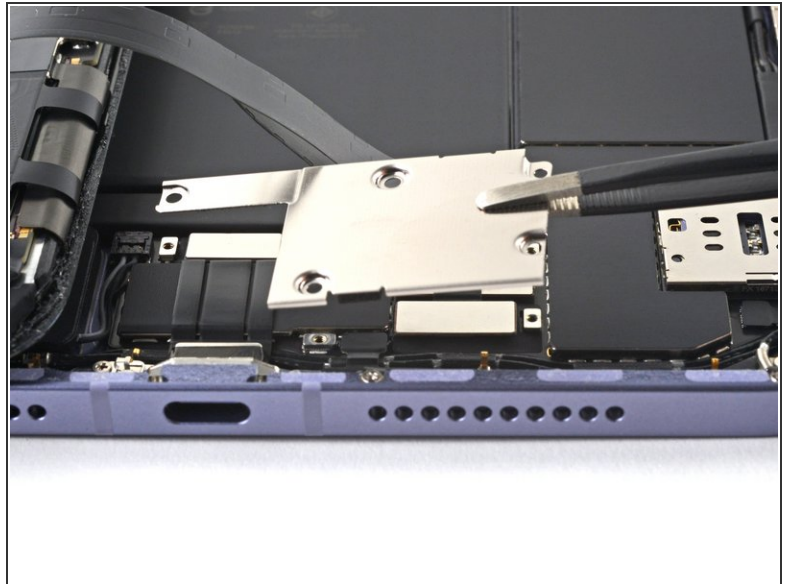
 **Don't twist the screen or move it too far away from the frame to avoid damaging the flex cable.**

Step 10 — Unfasten the display cable bracket



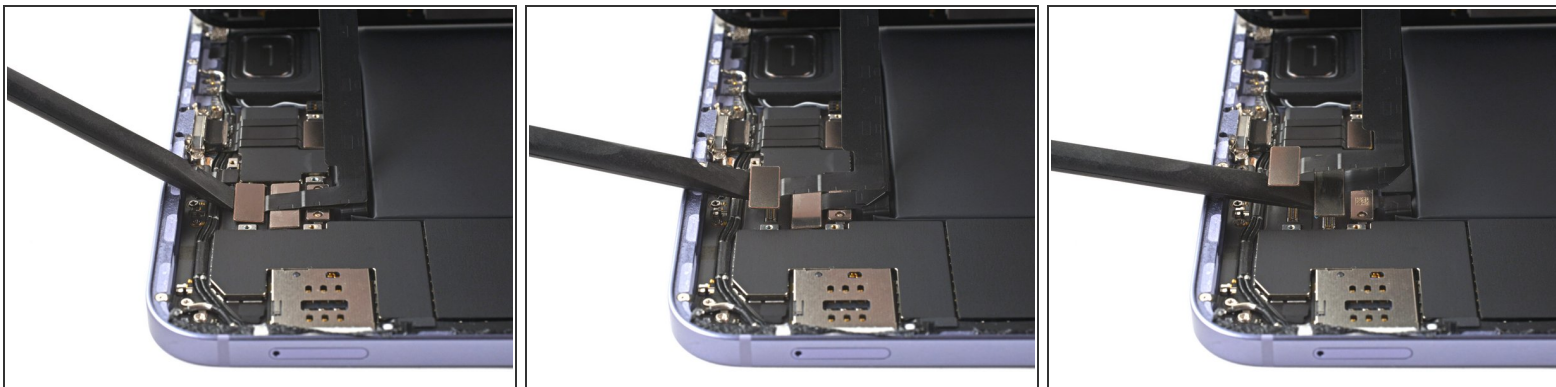
- Use a Phillips #000 screwdriver to remove the five 1.2 mm-long screws securing the frame bracket to the frame.

Step 11 — Remove the display cable bracket



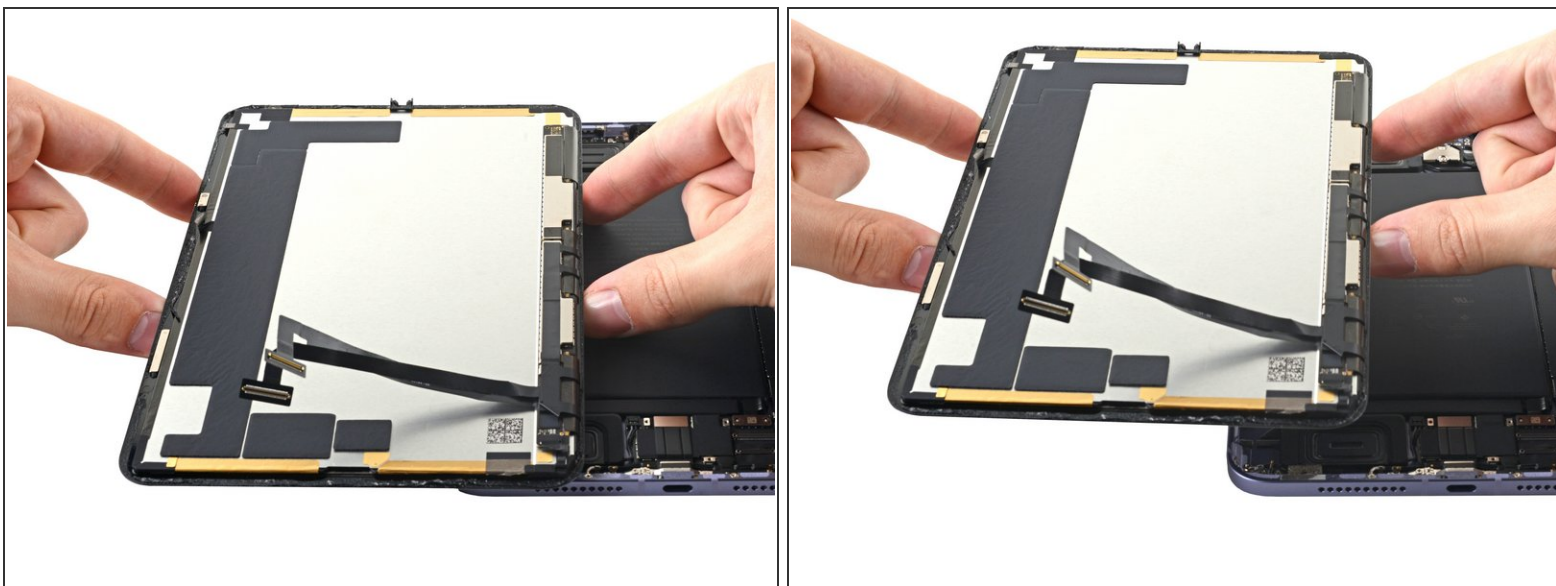
- Use tweezers, or your fingers, to remove the display cable bracket from the frame.

Step 12 — Disconnect the display



- Use the flat end of a spudger to pry up and disconnect the display cable's two press connectors secured to the frame.

Step 13 — Remove the screen



- Remove the screen from the frame.


Step 14 — Disconnect the battery



- The the flat end of a spudger to pry up and disconnect the battery's press connector secured to the frame.
- ✦ To re-attach [press connectors](#) like this one, carefully align and press down on one side until it clicks into place, then repeat on the other side. Do not press down on the middle. If the connector is misaligned, the pins can bend, causing permanent damage.

Step 15 — Speaker information



 If you're replacing a specific speaker, use the links below to skip to the corresponding steps:

- [Top speaker](#)
- [Bottom speaker](#)

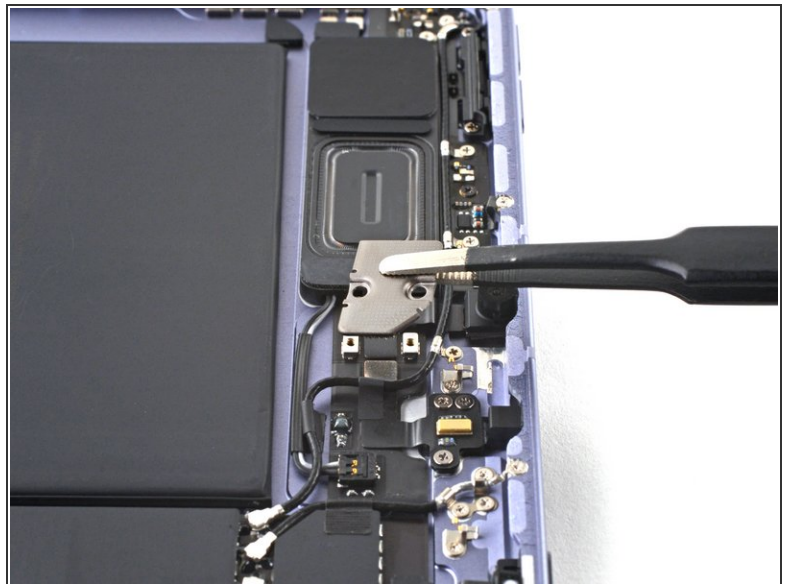
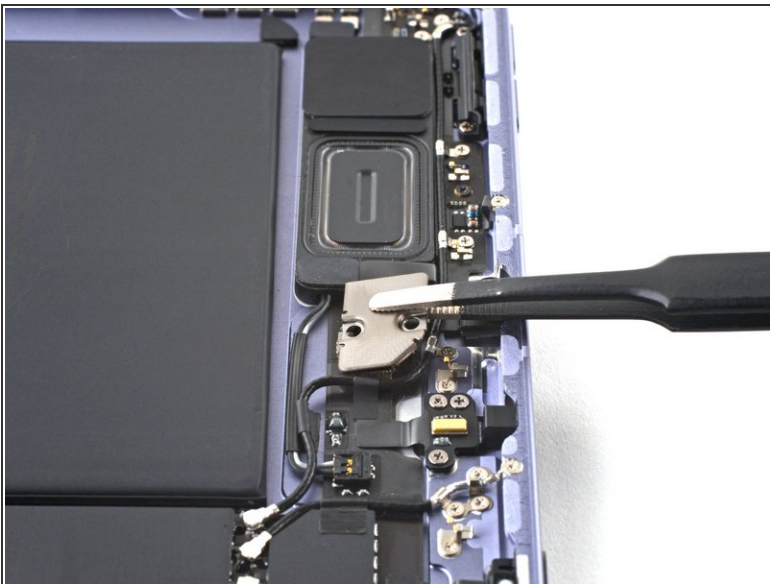
Step 16 — Unfasten the front camera shield



i The next 11 steps will show how to remove the top speaker.

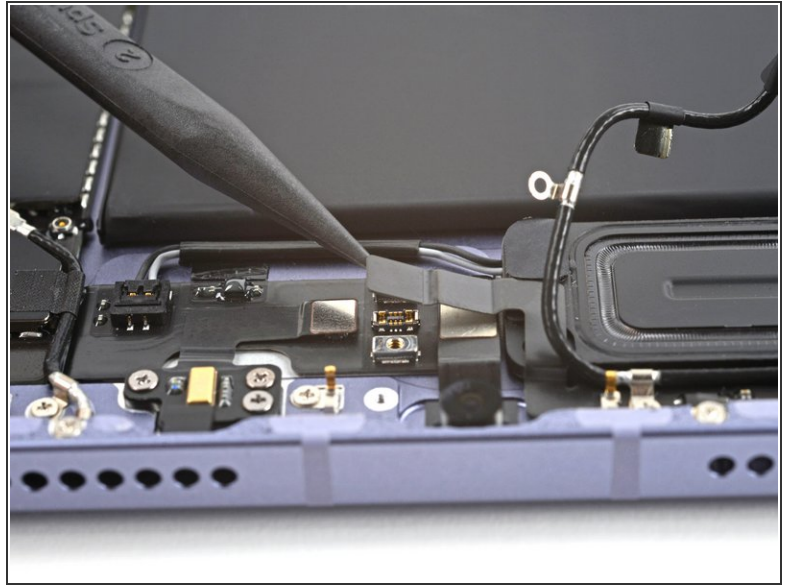
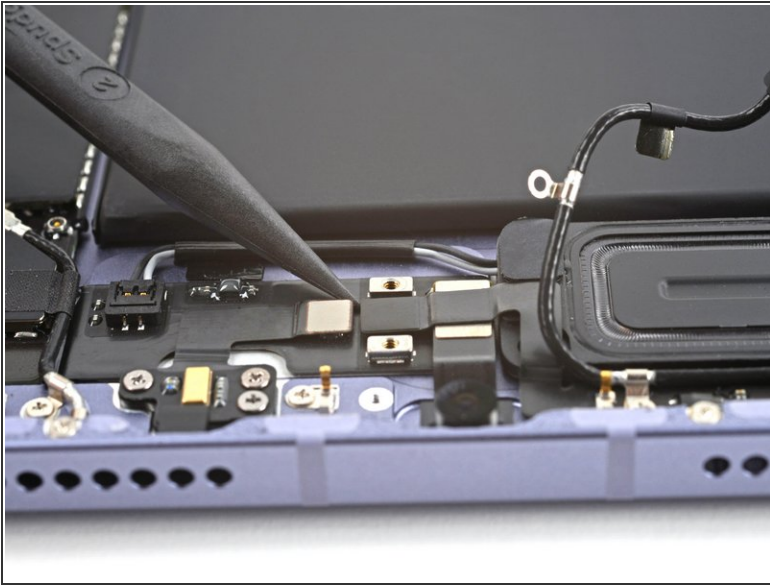
- Use a Phillips #000 screwdriver to remove the two 1.2 mm screws securing the front camera shield to the frame.

Step 17 — Remove the front camera shield



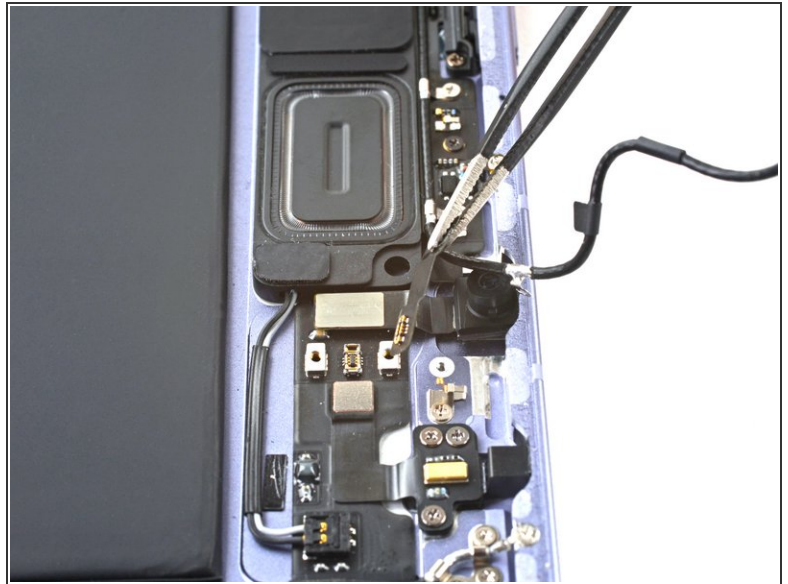
- Use tweezers, or your fingers, to remove the front camera shield.

Step 18 — Disconnect the volume button board



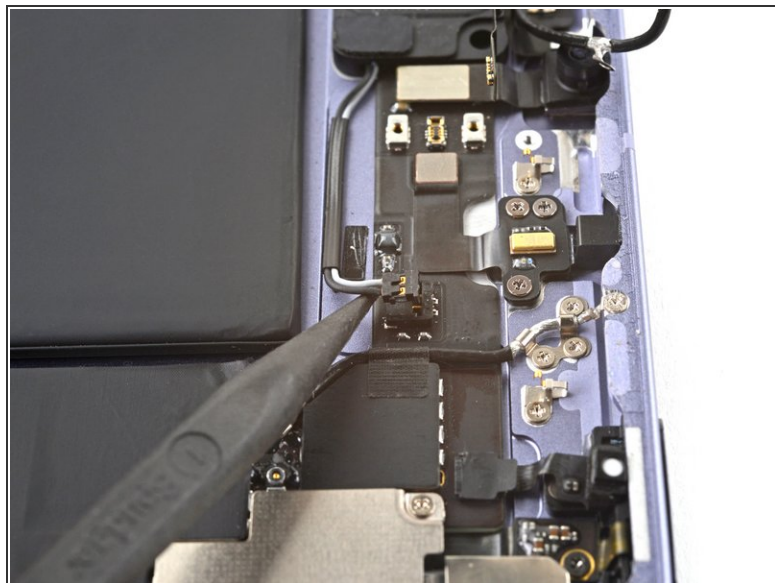
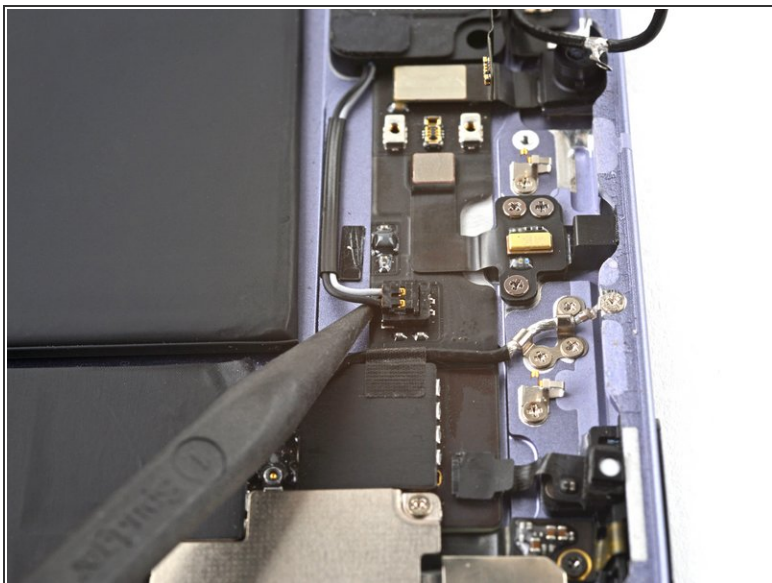
- Use a spudger to pry up and disconnect the volume button board's press connector secured to the frame.

Step 19 — Reposition the volume button board's cable



- Use tweezers, or your fingers, to peel back the volume button board's cable from the top speaker.

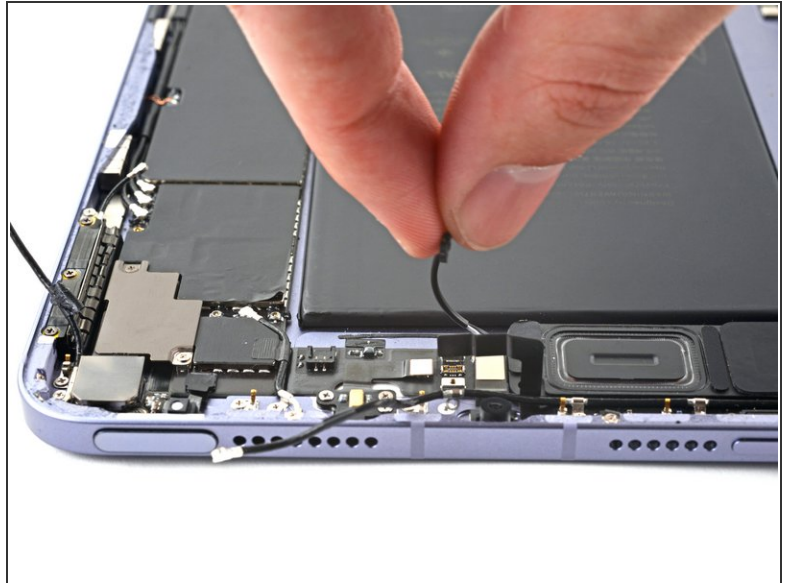
Step 20 — Disconnect the top speaker



- Use the point of spudger to pry up and disconnect the top speaker's cable.

⚠ Be very careful when performing this step; apply equal force to both cords to prevent any damage to the connector.

Step 21 — Reposition the top speaker's cable



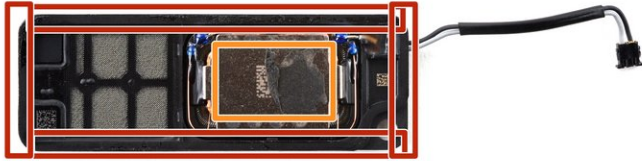
- ❗ The top speaker's cable is lightly adhered to the frame.
- Gently peel back the cable to separate it from the frame.

Step 22 — Heat the top speaker



- Apply a [heated iOpener](#) to the top-left edge of the device for 90 seconds to loosen the top speaker's adhesive.

Step 23 — Top speaker information



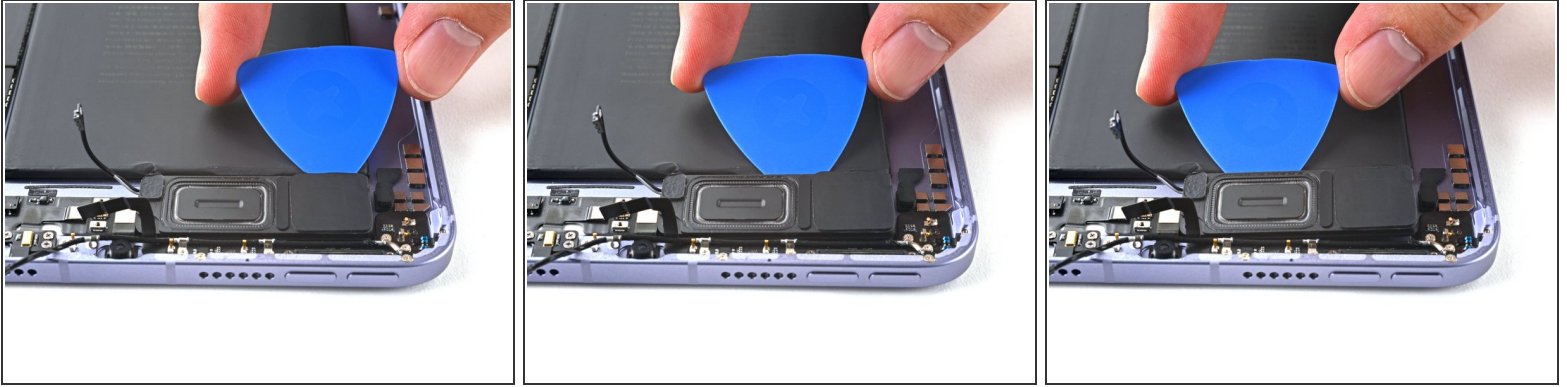
- While you're waiting for the adhesive to loosen, note the following:
 - Adhesive is located around the perimeter of the speaker.
 - ⓘ Insert a pick 2 mm to separate this adhesive.
 - Adhesive is also located in the center of the speaker.
 - ⓘ Insert a pick 7 mm to separate this adhesive.

Step 24 — Separate the top speaker's adhesive



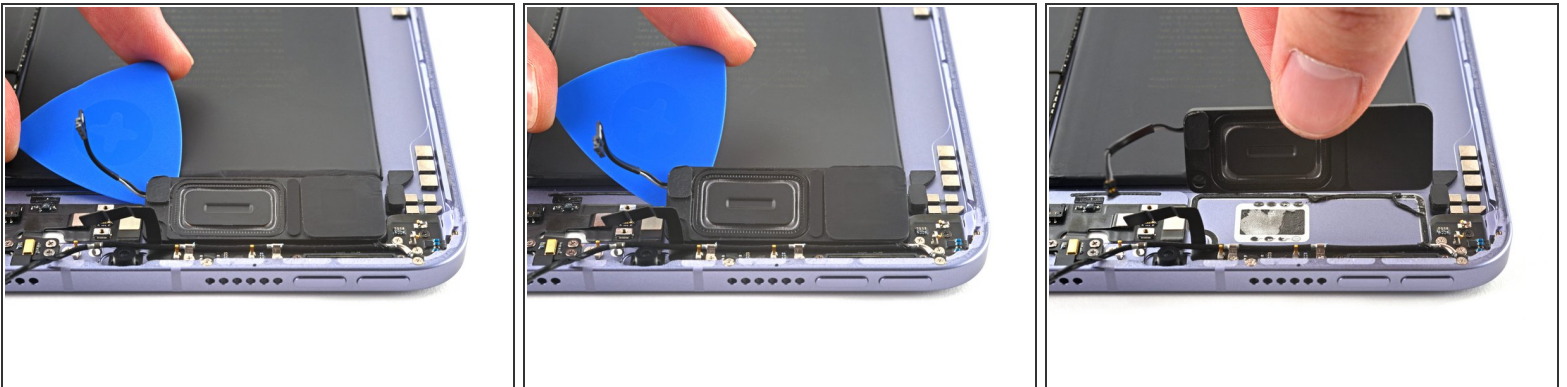
- Insert an opening pick between the top speaker and the frame.
 - ⓘ Insert the pick at least 7 mm to separate the center adhesive.

Step 25



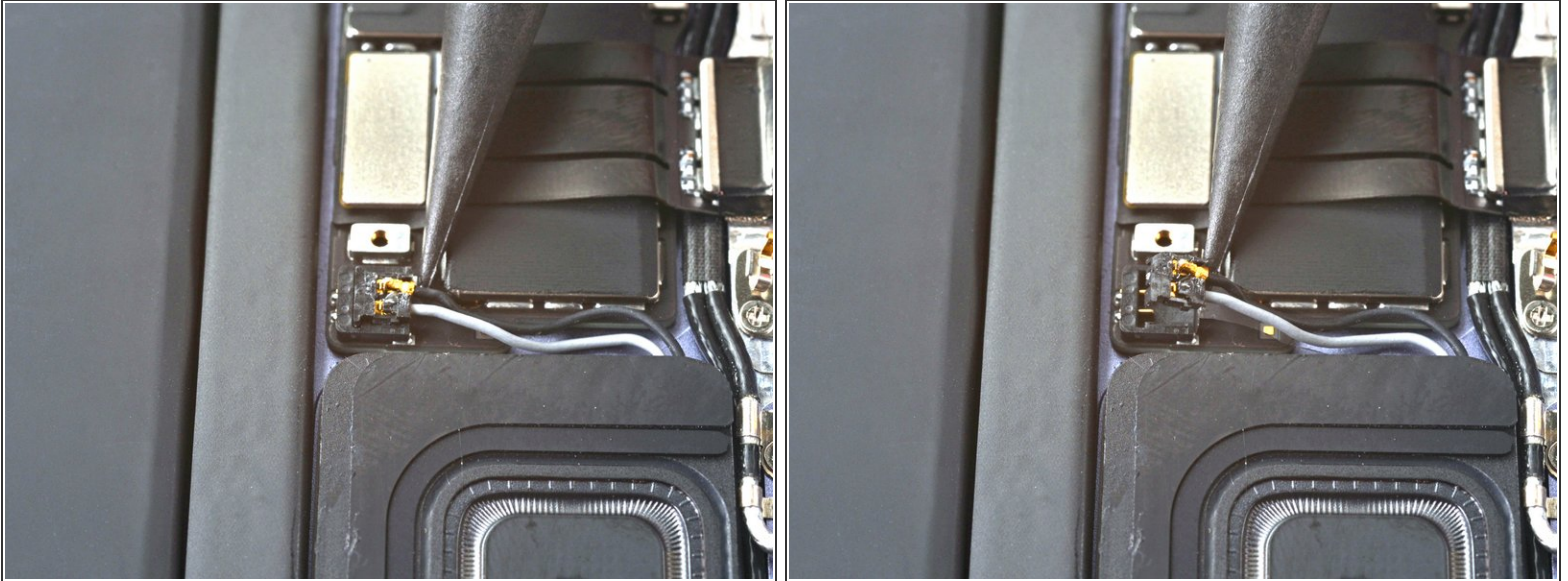
- Slice along the perimeter of the top speaker to separate the adhesive.

Step 26 — Remove the top speaker



- ① At this point, the perimeter of the speaker should be separated from the frame. If there's still resistance around the edges of the speaker, use an opening pick to cut the adhesive again.
- Pry up with the opening pick to completely separate the top speaker from the frame.
- Remove the top speaker.

Step 27 — Disconnect the bottom speaker



i The next six steps will show how to remove the bottom speaker.

- Use the point of spudger to pry up and disconnect the bottom speaker's cable.

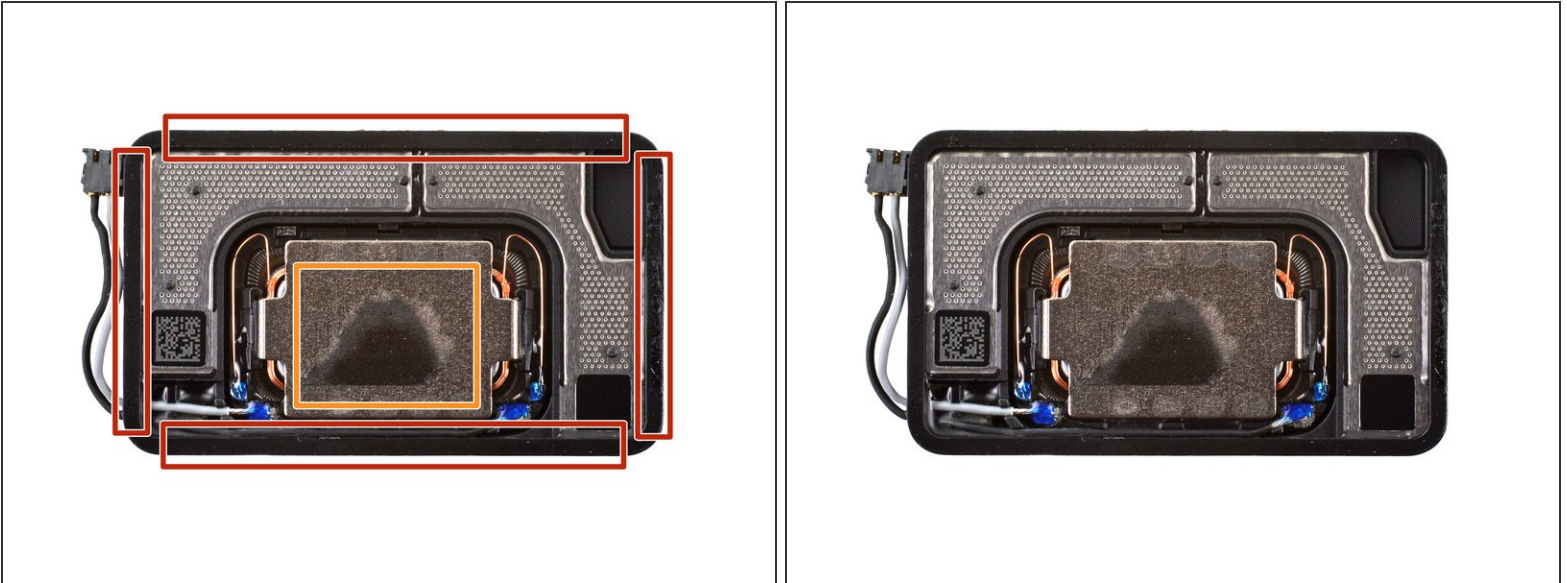
⚠ Be very careful when performing this step; apply equal force to both cords to prevent any damage to the connector.

Step 28 — Heat the bottom speaker



- Apply a [heated iOpener](#) to the bottom-left edge of the device to loosen the bottom speaker's adhesive.

Step 29 — Bottom speaker information



i While you're waiting for the adhesive to loosen, note the following:

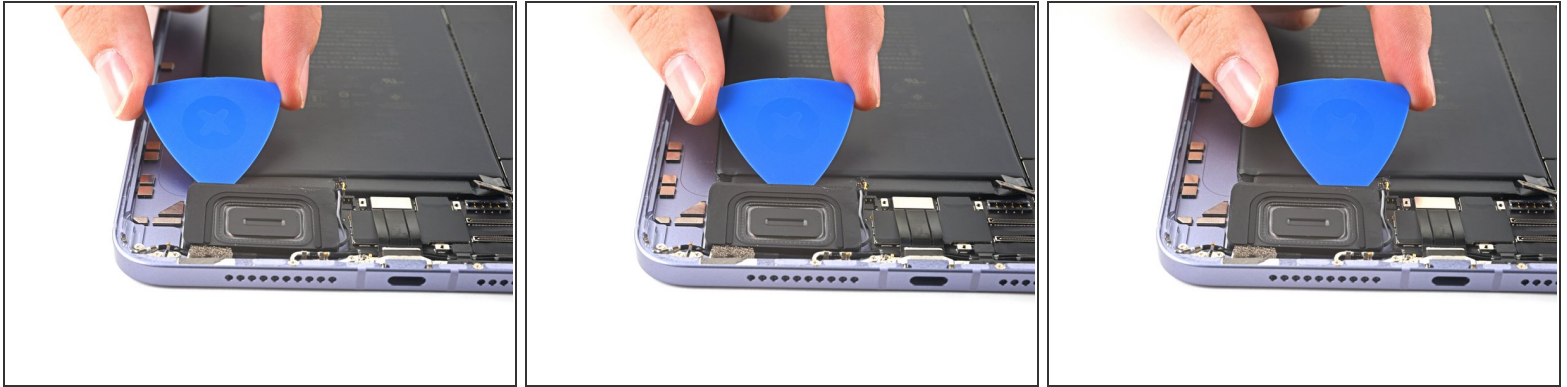
- Adhesive is located around the perimeter of the speaker.
 - i** Insert a pick 2 mm to separate this adhesive.
- Adhesive is also located in the center of the speaker.
 - i** Insert a pick 9 mm to separate this adhesive.

Step 30 — Separate the bottom speaker's adhesive



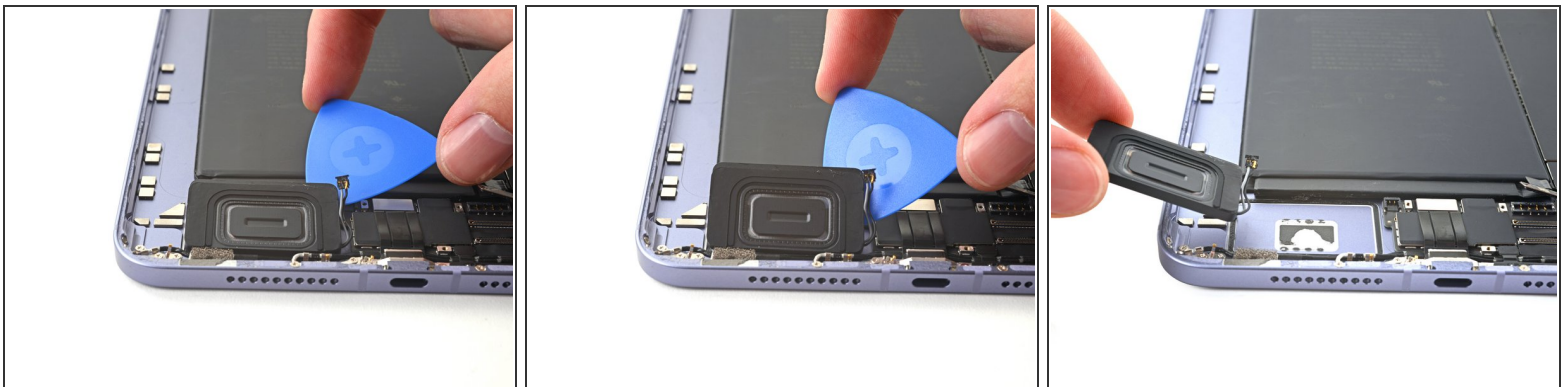
- Insert an opening pick between the bottom speaker and the frame.
 - i** Insert the pick at least 9 mm to separate the center adhesive.

Step 31



- Slice along the perimeter of the bottom speaker to separate the adhesive.

Step 32 — Remove the bottom speaker



- ⓘ At this point, the perimeter of the speaker should be separated from the frame. If there's still resistance around the edges of the speaker, use an opening pick to cut the adhesive again.
- Pry up with the opening pick to completely separate the bottom speaker from the frame.
- Remove the bottom speaker.

To reassemble your device, follow these instructions in reverse order.

Compare your new replacement part to the original part—you may need to transfer remaining components or remove adhesive backings from the new part before you install it.

Repair didn't go as planned? Try some [basic troubleshooting](#), or ask our [iPad mini 6 Answers community](#) for help.