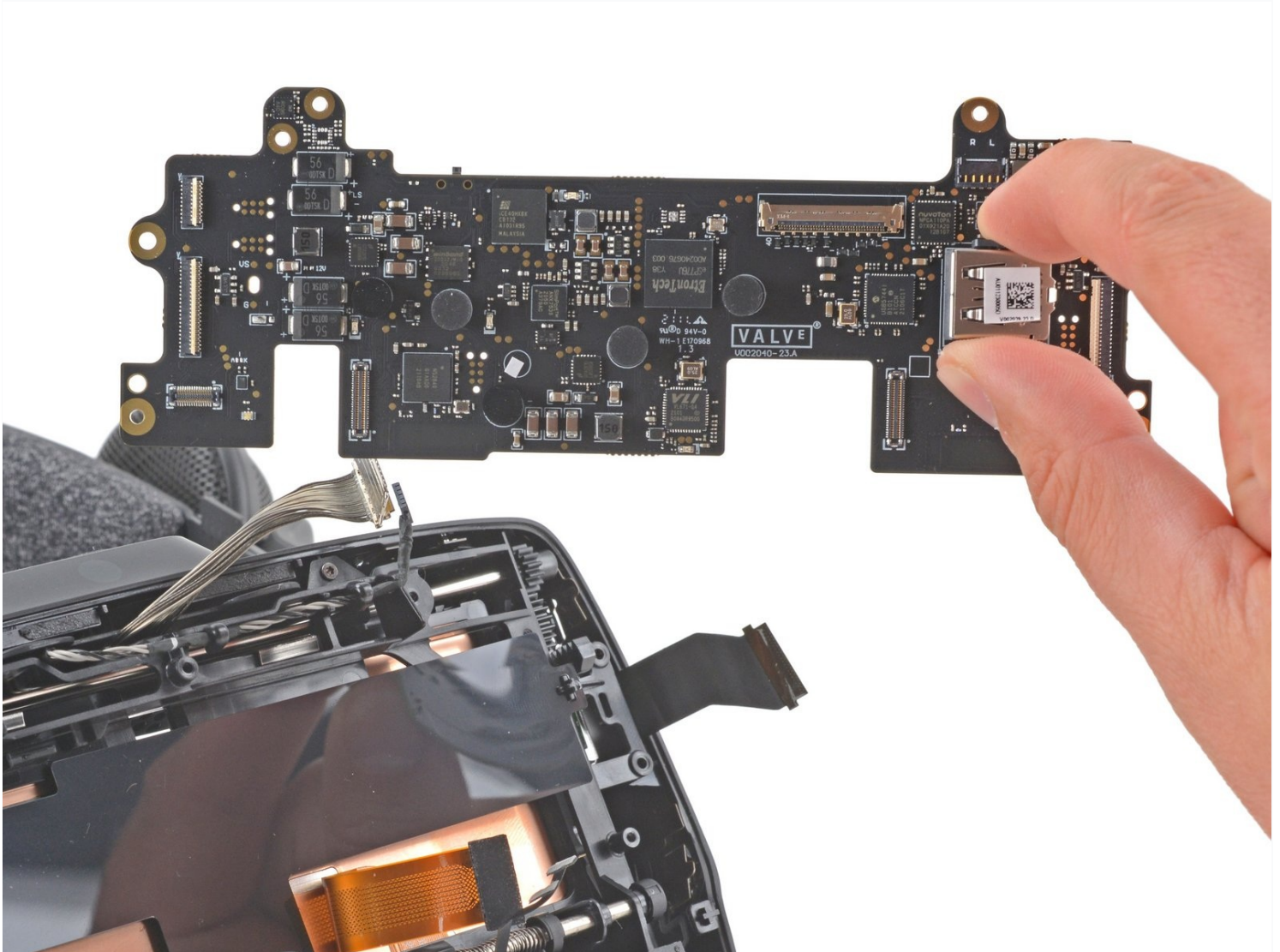




Valve Index Headset Motherboard Replacement

Follow this guide to replace the motherboard in...

Written By: Sam Omiotek



INTRODUCTION

Follow this guide to replace the motherboard in a Valve Index VR headset.

Power off and unplug your Index before you begin your repair.

TOOLS:

T5 Torx Screwdriver (1)
Spudger (1)
1 x Opening Picks (1)

PARTS:

Valve Index Motherboard Cover (1)

Step 1 — Remove the front cover



- Use your hand to pull the front cover straight off of the front of the headset.
 - ⓘ The front cover is held in place by four magnets that secure to screws in the motherboard cover.
- ☑ Before installing a front cover, ensure the [four screws](#) securing the motherboard cover are installed. Otherwise, the front cover will not stay in place.

Step 2 — Remove the motherboard cover



- Use a T5 Torx screwdriver to remove the four 5.4 mm screws securing the motherboard cover to the headset.

Step 3



- Remove the motherboard cover from the headset.

Step 4 — Remove the front fascia



- Use a T5 Torx screwdriver to remove the following eight screws from the front fascia:
 - Four 6.3 mm screws with fine threads
 - Four 6.0 mm screws with coarse threads

Step 5



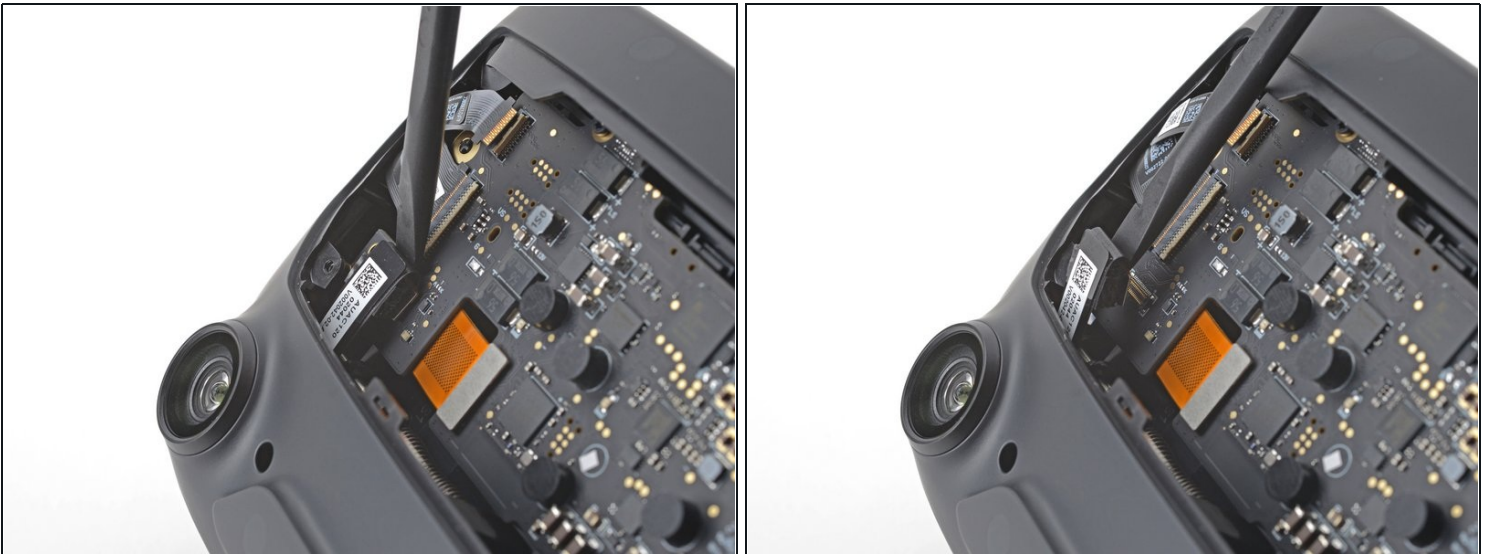
- Use a spudger to unlock the [ZIF connector](#) at the top-left corner of the motherboard.
- Disconnect the FPC ribbon cable from the motherboard.

Step 6



- Use a spudger to unlock the ZIF connector at the top-right corner of the motherboard.
- Disconnect the FPC ribbon cable.

Step 7



- Use the flat end of a spudger to disconnect the press connector from the bottom-left corner of the motherboard.
- ☒ To re-attach [press connectors](#) like this one, carefully align and press down on one side until it clicks into place, then repeat on the other side. Do not press down on the middle. If the connector is misaligned, the pins can bend, causing permanent damage.

Step 8



- Use the flat end of a spudger to disconnect the press connector from the bottom-right corner of the motherboard.

Step 9



- Insert an opening pick in between the front fascia and the headset.
- Slide the opening pick over to separate the front fascia from the headset.

Step 10



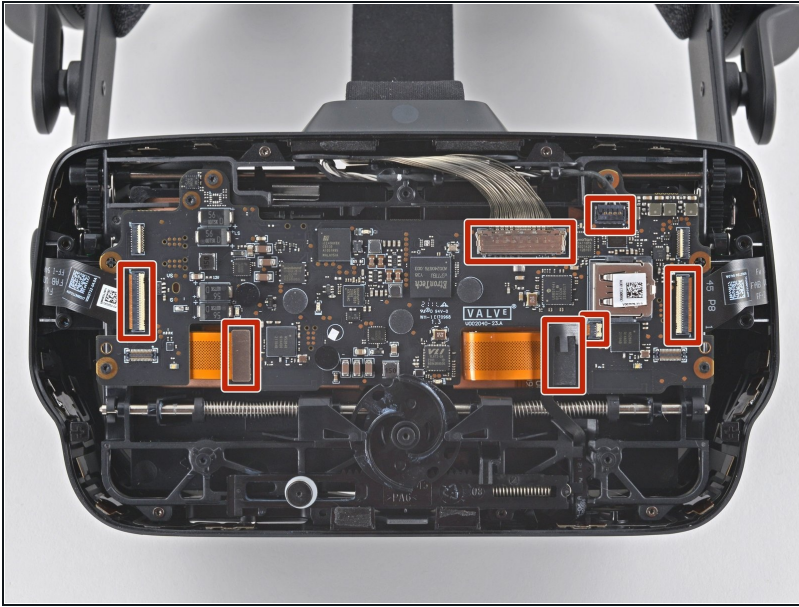
- Continue sliding the opening pick along the perimeter of the front fascia until all edges are free.

Step 11



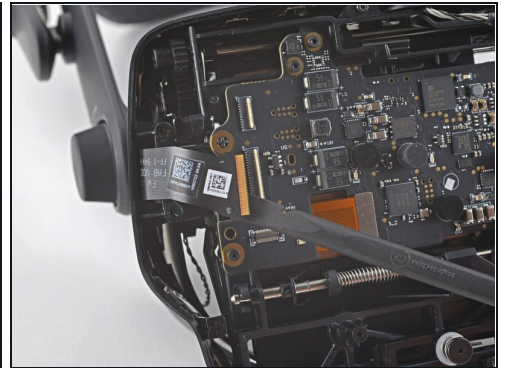
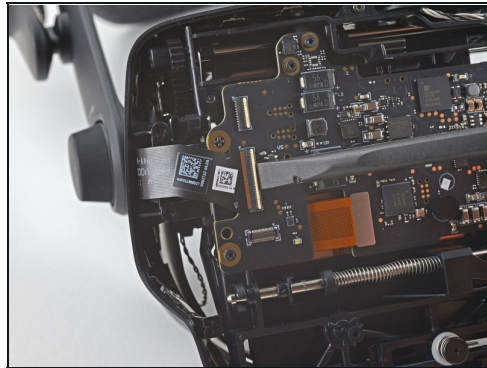
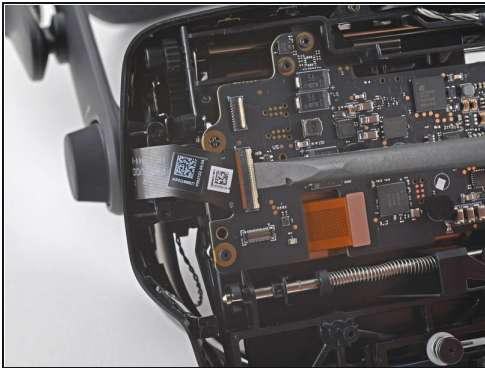
- Remove the front fascia.

Step 12 — Remove the motherboard



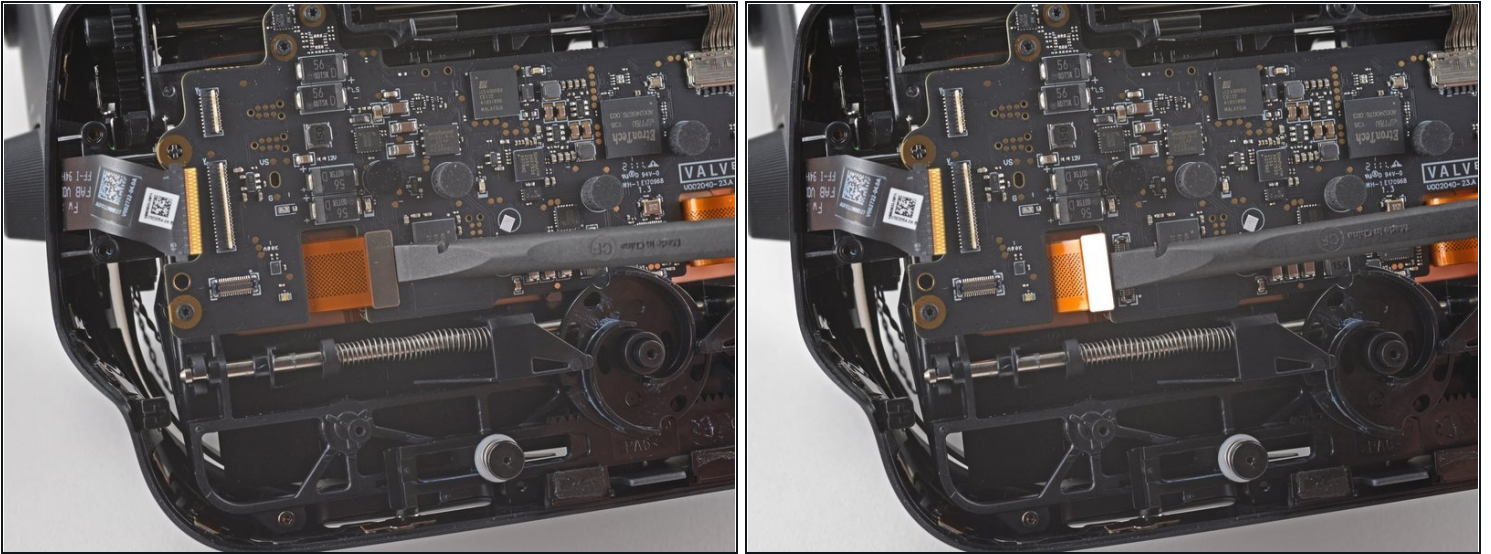
- Note the seven cables that must be disconnected in the following steps before the motherboard can be removed.

Step 13



- Use the flat end of a spudger to unlock the wide ZIF connector on the left side of the motherboard.
- Disconnect the FPC ribbon cable from the motherboard.

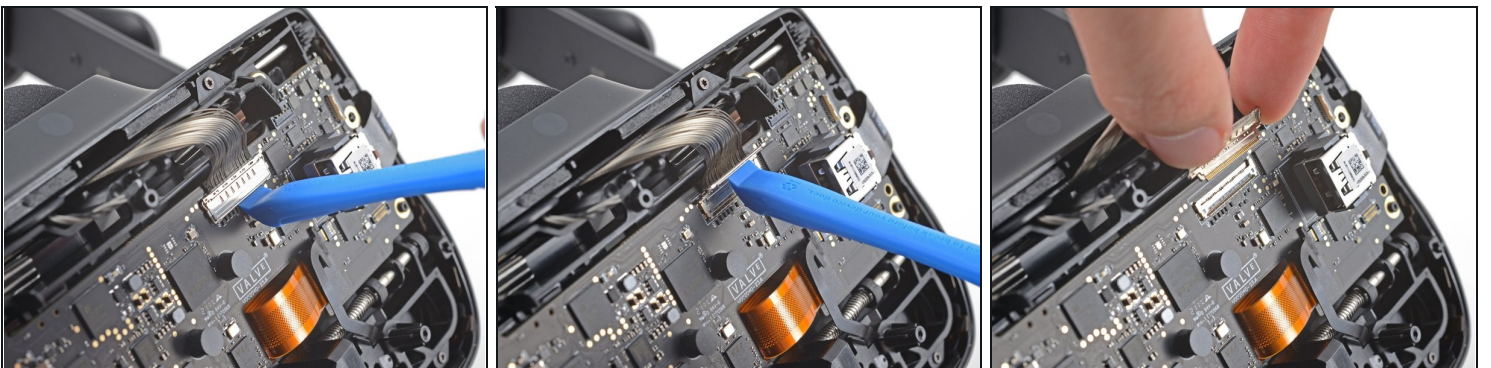
Step 14



- Use the flat end of a spudger to disconnect the press connector near the bottom-left edge of the motherboard.

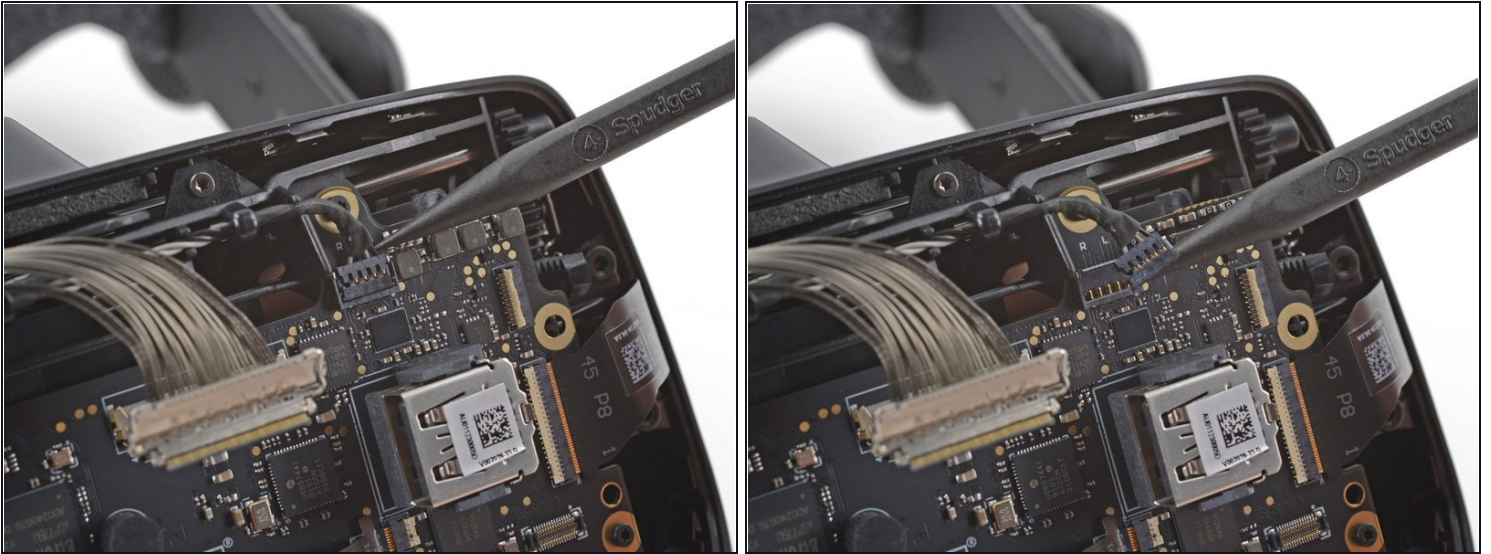
☑ During reassembly, be sure this cable is not trapped underneath the motherboard.

Step 15



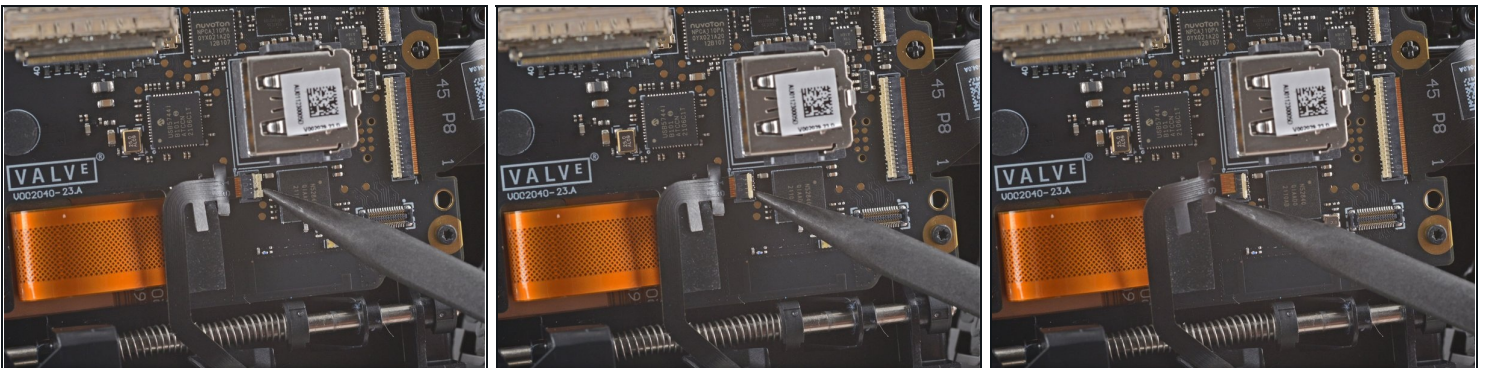
- Use your finger or an opening tool to unlock the display cable connector at the top of the motherboard.
- Carefully disconnect the display cable connector.

Step 16



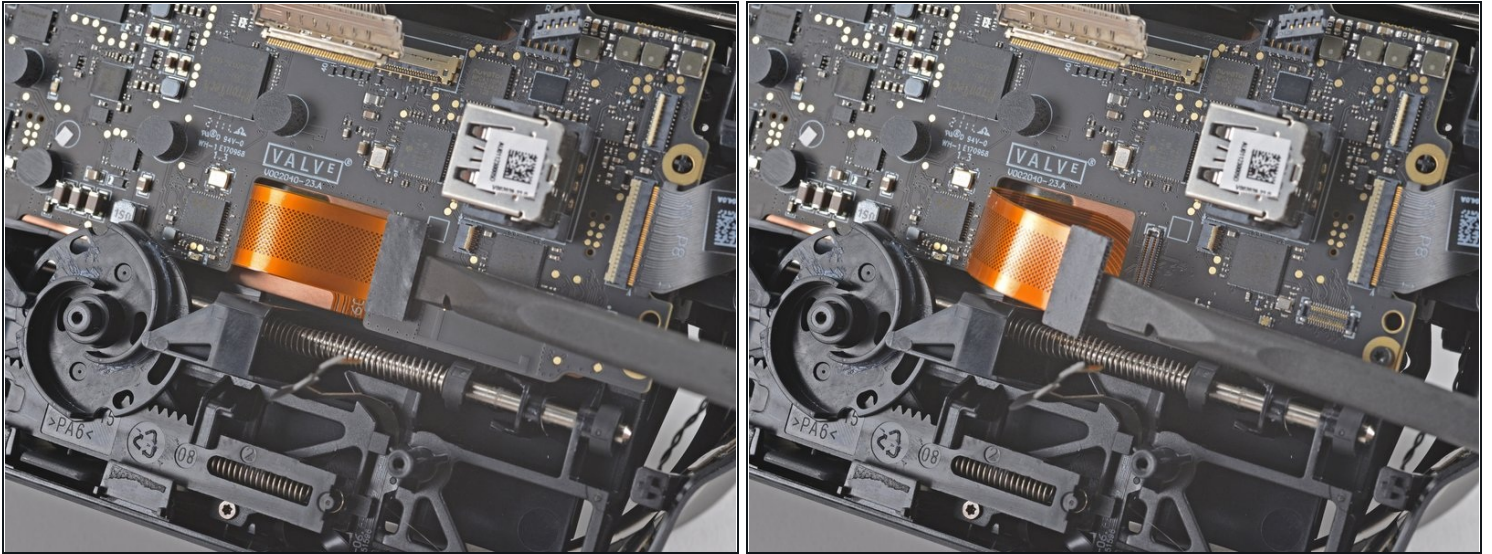
- Use the pointed end of a spudger to gently disconnect the bundled cable connector from the top-right corner of the motherboard.

Step 17



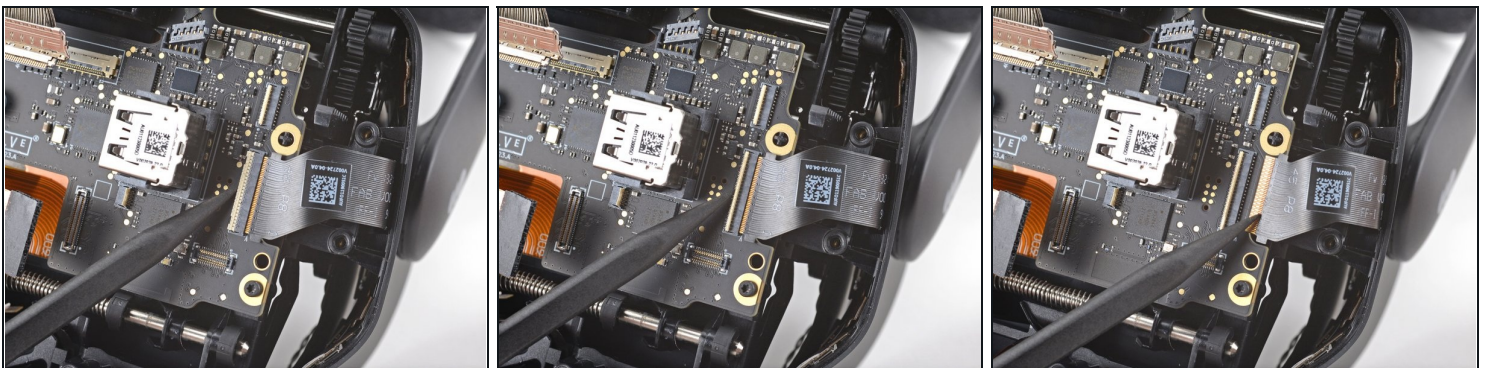
- Use the pointed end of a spudger to unlock the ZIF connector next to the USB port on the motherboard.
 - Disconnect the FPC cable from the motherboard.
- ☒ During reassembly, make sure this ribbon cable is not trapped under the motherboard.

Step 18



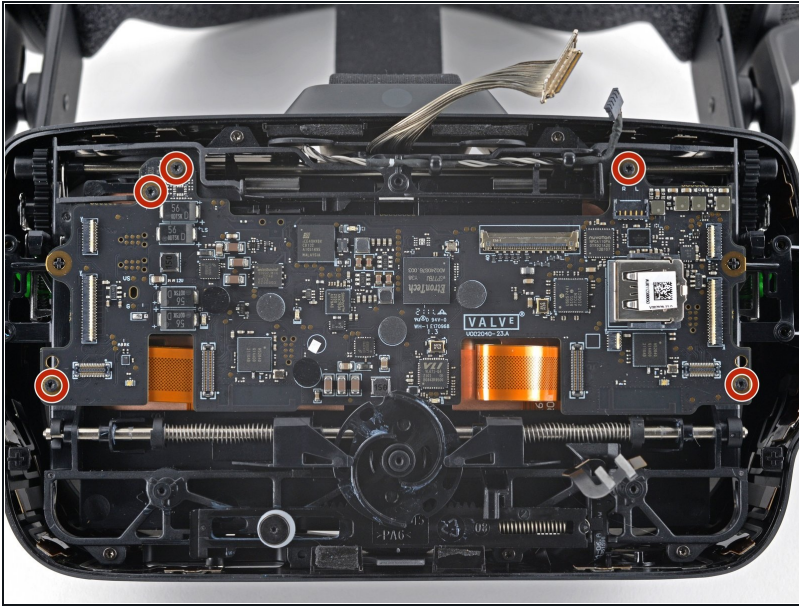
- Use the flat end of a spudger to disconnect the press connector below the USB port on the motherboard.
- ☒ During reassembly, make sure this cable is not trapped under the motherboard.

Step 19



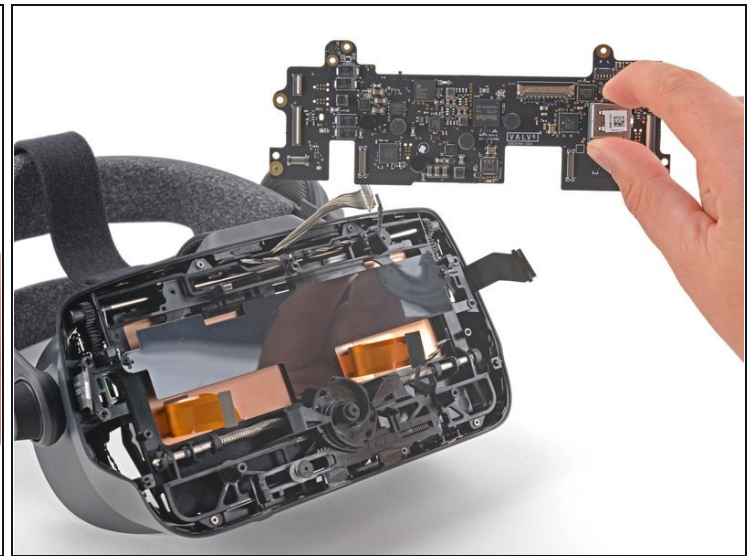
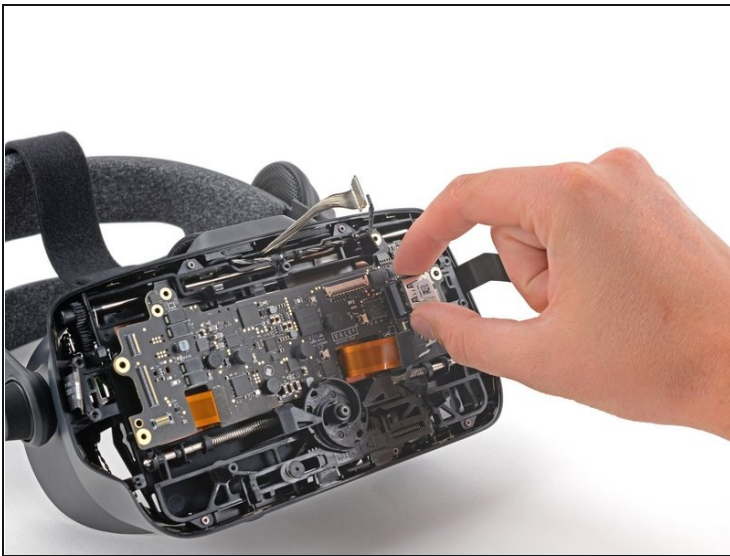
- Use a spudger to unlock the wide ZIF connector near the right edge of the motherboard.
- Disconnect the FPC ribbon cable from the motherboard.

Step 20



- Use a T5 Torx screwdriver to remove the five 6.0 mm screws securing the motherboard to the headset.

Step 21



- Grab the motherboard by the USB port and carefully remove it from the headset.

- ☑ During reassembly, be very careful not to trap any of the previously disconnected cables under the motherboard.

Compare your new replacement part to the original part—you may need to transfer remaining components or remove adhesive backings from the new part before installing.

To reassemble your device, follow the above steps in reverse order.

Take your e-waste to an [R2 or e-Stewards certified recycler](#).

Repair didn't go as planned? Try some [basic troubleshooting](#), or ask our Valve Index [Answers community](#) for help.