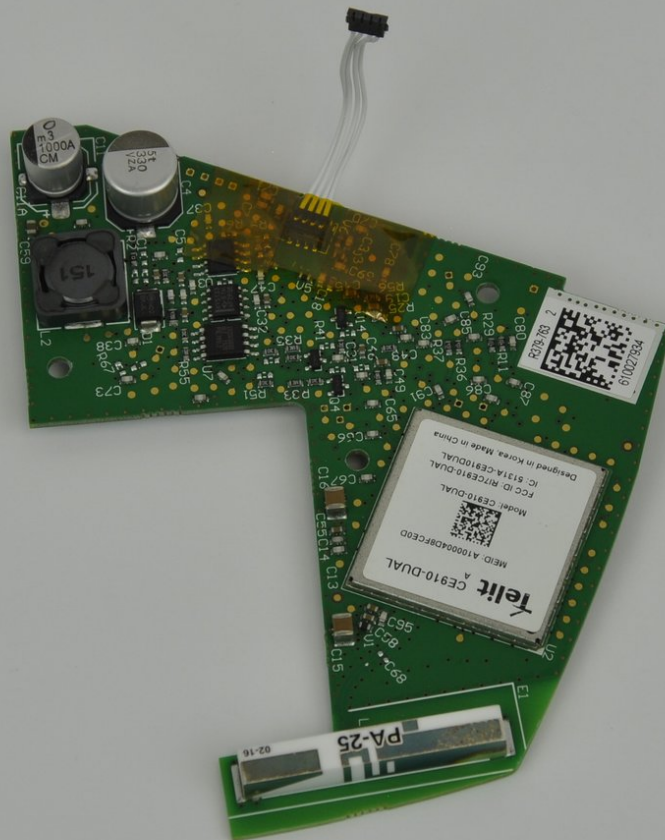




ResMed AirSense 10 Wireless Communication Board Replacement

Written By: Mitchell Novak



INTRODUCTION

If your device is having internet or network issues, the cause might be a broken wireless communication board. If this is the cause, this guide can help you to replace the broken board.

Be sure to confirm that the internet issues are due to the device itself. The wifi network it is connected to could also be the cause of the problems. To easily test this, just make sure other devices can connect to the internet properly.



TOOLS:

- [Halberd Spudger](#) (1)
 - [iFixit Opening Tool](#) (1)
 - [TR10 Torx Security Screwdriver](#) (1)
-

Step 1 — Top Cover



- Remove the water tub by gently pulling it out.

Step 2



- Pry off the face plate by using your finger or an opening tool.
 - ⓘ Use a moderate amount of force when prying open.
- Remove the face plate from the top cover.
 - ⓘ There will be a clicking sound on either side of the divot when assembling and disassembling.

Step 3



- Unscrew and remove the two 11.8 mm TR10 Torx screws that were revealed from the face plate being removed.

Step 4



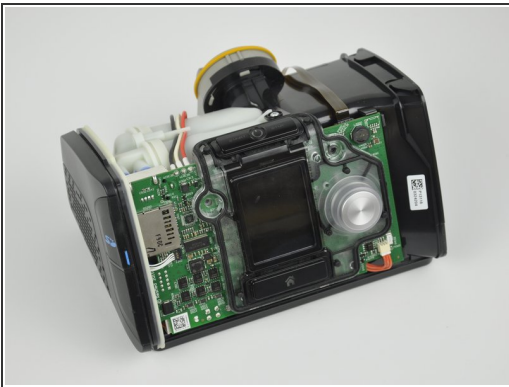
- Unscrew and remove the two 11.8 mm TR10 Torx screws from the bottom of the device.

Step 5



- Remove the top cover from the rest of the device.

Step 6 — Wireless Communication Board



- Place a halberd spudger behind the connector cable.
- Use a halberd spudger to pull the connector away from the motherboard.

Step 7



- Unscrew and remove the two 11.8 mm TR10 Torx screws from the bottom of the device.

Step 8



- Insert a plastic opening tool in between the side and bottom panel.
- Pry the side panel away from the bottom panel with the plastic opening tool.
- Remove the side panel by pulling it away from the device.

Step 9



- Push in the clips which secure the board to the side panel with the plastic opening tool.

Step 10



- Remove the wireless communication board from the side panel.

To reassemble your device, follow these instructions in reverse order.