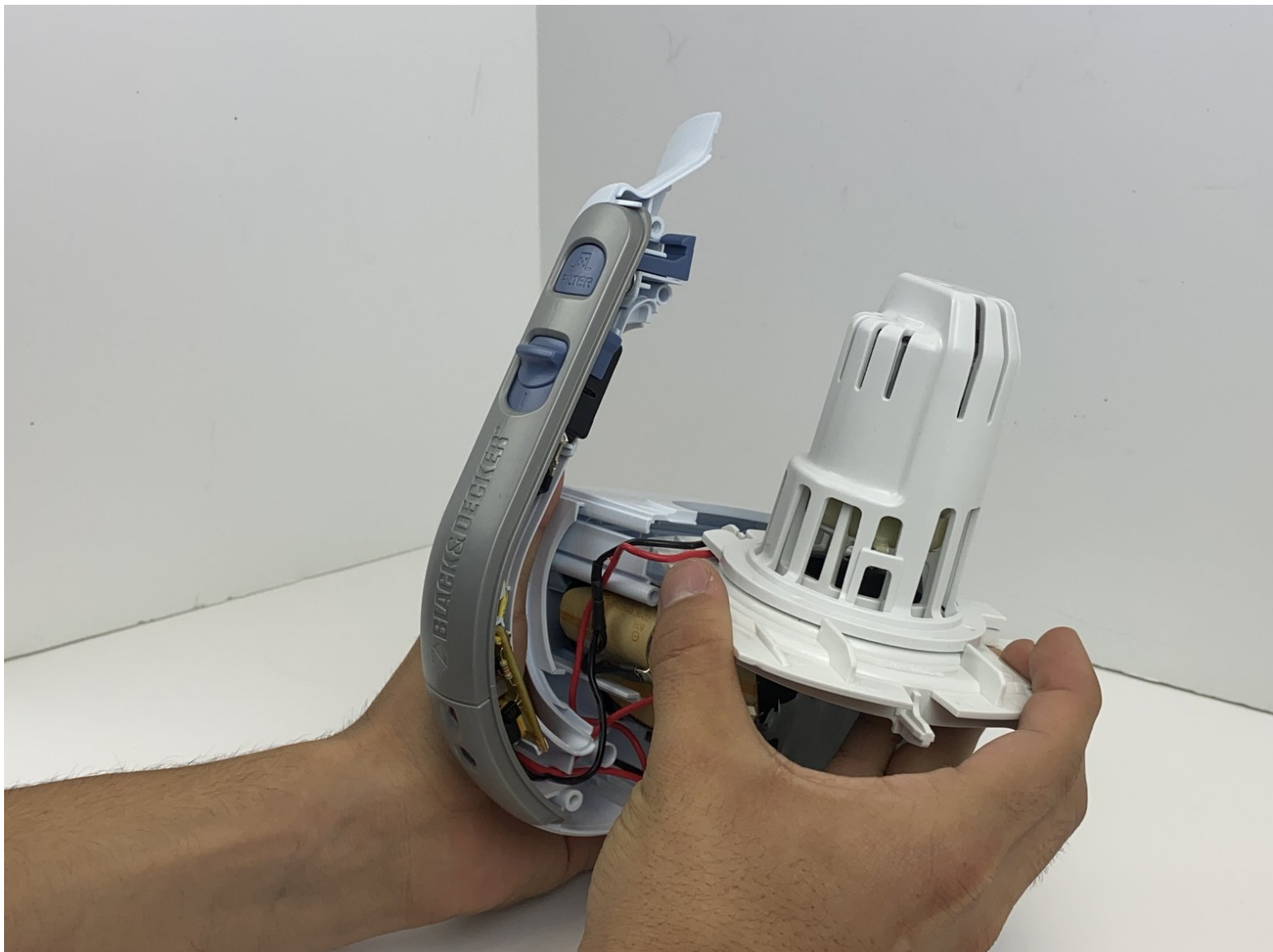




Black and Decker Dustbuster CHV1510 Motor Replacement

This guide demonstrates how to replace the main electric motor in the vacuum.

Written By: Dominic Krier



INTRODUCTION

This guide will show how to disassemble the Black and Decker CHV1510 cordless, handheld vacuum to remove and replace a faulty electric motor. It is a fairly simple process requiring only a plastic pry tool and a Phillips head screwdriver. This specific handheld vacuum is a discontinued product, making it extremely difficult to find any sufficient guides to aid consumers in fixing components of the product. Other concerns from consumers mostly focus on issues with the battery, motor failure, or power switch concerns.

The components in this device are extremely intertwined, meaning you may think your vacuum might have a power assembly issue when the electric motor is the real problem and fails to supply the vacuum with power. This is crucial, in that it is important to inspect your device thoroughly to ensure you are diagnosing the correct component to be replaced. The electric motor is one of the essential components needed for the vacuum to properly function.

This guide provides accessibility in helping others fix their previously unusable devices in the hopes of not having to purchase a new or different handheld vacuum. Of course, handheld vacuums are very simple, though many consumers may not explore the options to fix their device on the quick assumption that it may be most time effective to go purchase another inexpensive product.



TOOLS:

- [Phillips #0 Screwdriver](#) (1)
 - [Phillips #1 Screwdriver](#) (1)
 - [iFixit Opening Tool](#) (1)
-

Step 1 — Prerequisite Only Guide



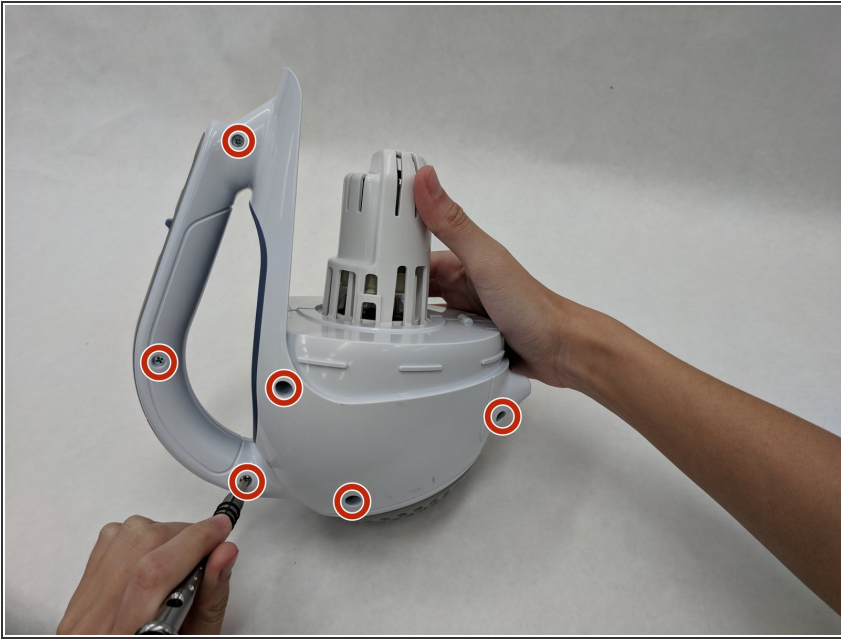
- Press the buttons with unlock symbols on both sides of the nozzle.
- Pull the nozzle upward.
- ❗ The other button cannot be seen on the image.

Step 2



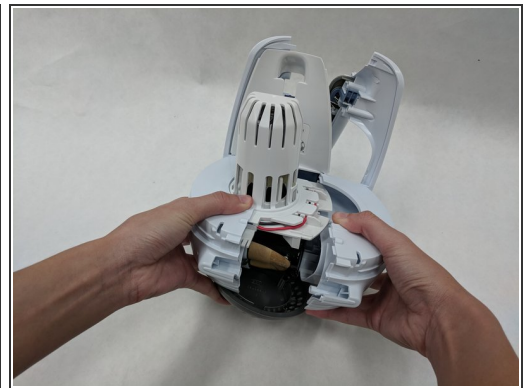
- Press the button with the "Filter" indicator.
- Pull the filter cover upward.

Step 3



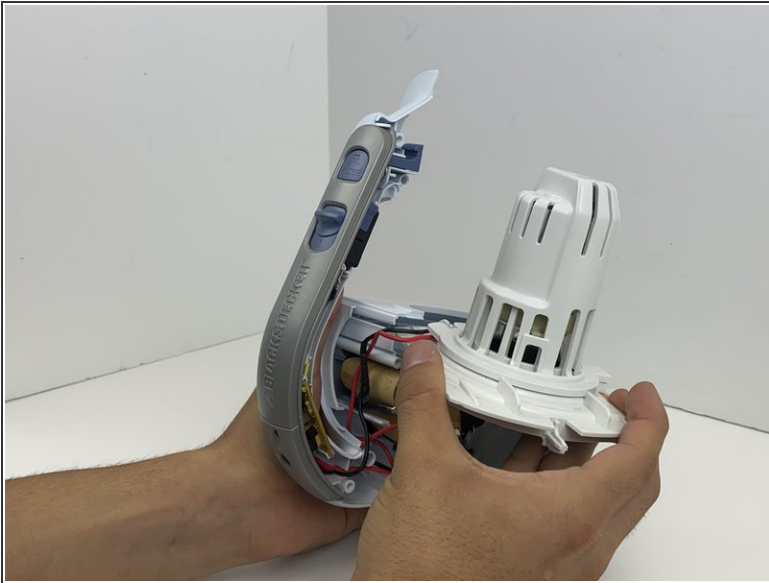
- Hold the vacuum base firmly and remove all six exterior 20 mm Phillips #0 screws.

Step 4



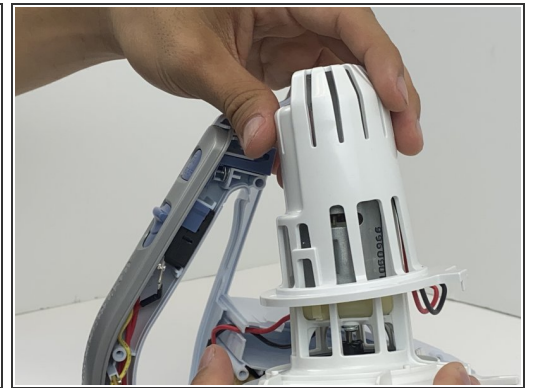
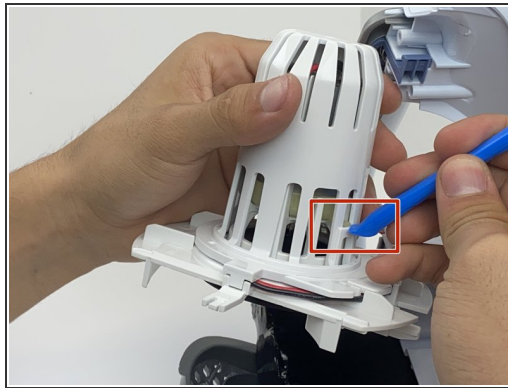
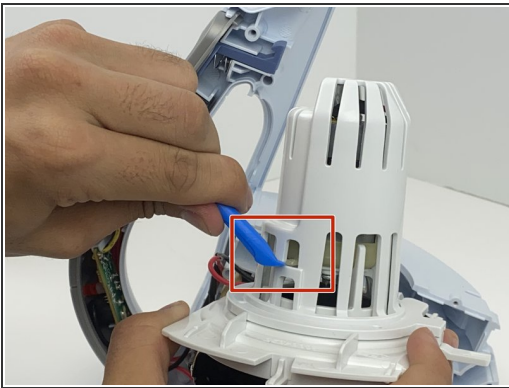
- Carefully and gently pull the two halves of the vacuum apart.

Step 5 — Electric Motor



- Pull out the motor section from the vacuum.

Step 6

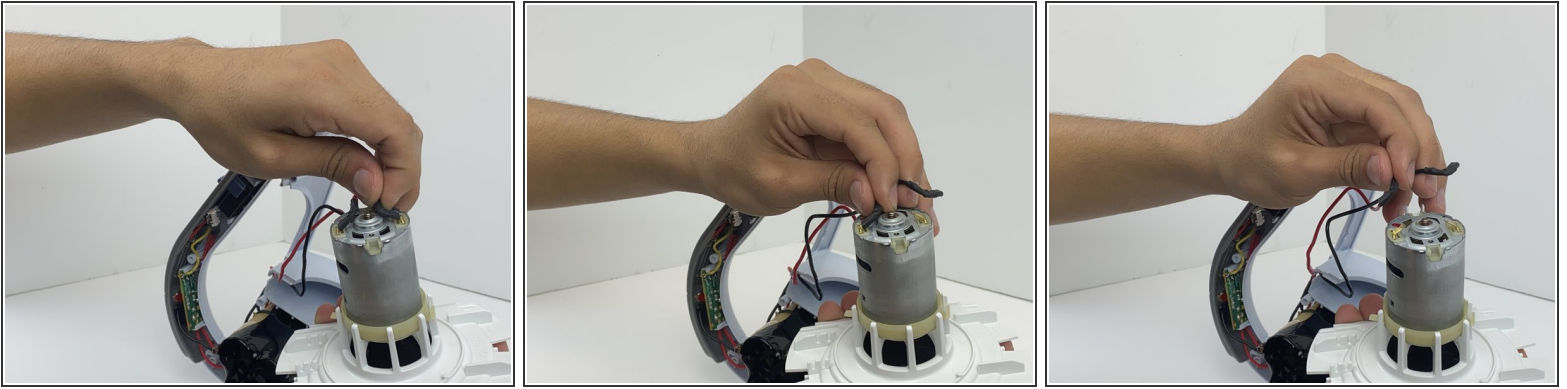


- Use an opening tool to lift the plastic strips underneath the motor upwards to separate them from the motor cover.

i The other plastic strip cannot be seen on the image.

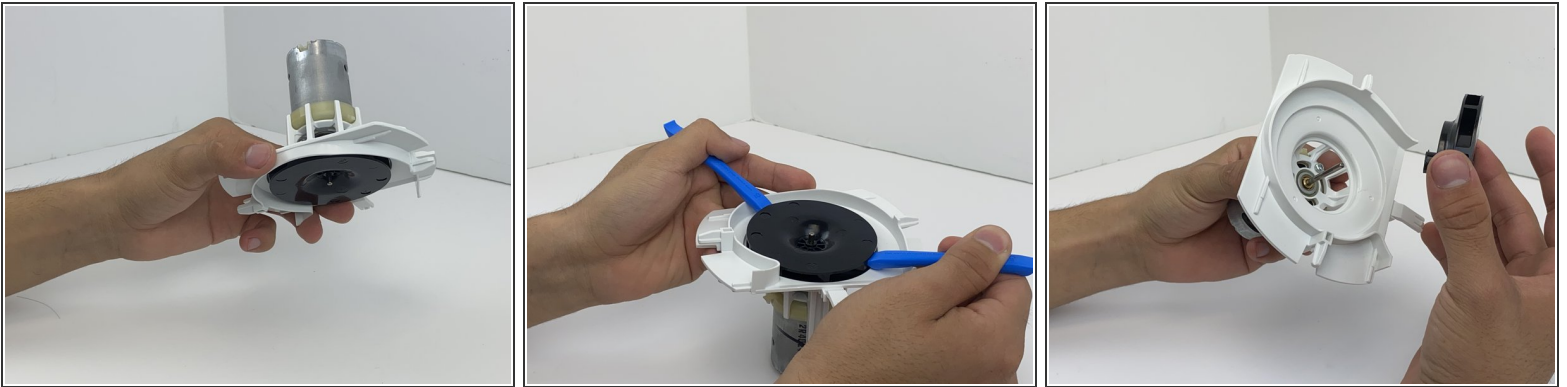
i Be cautious, as removing the two plastic strips can take a bit of force.

Step 7



- Disconnect the two red and black wires from the motor.
- ☑ Ensure that all disconnected wires can be distinguished from one another to avoid confusion when reassembling your device.

Step 8



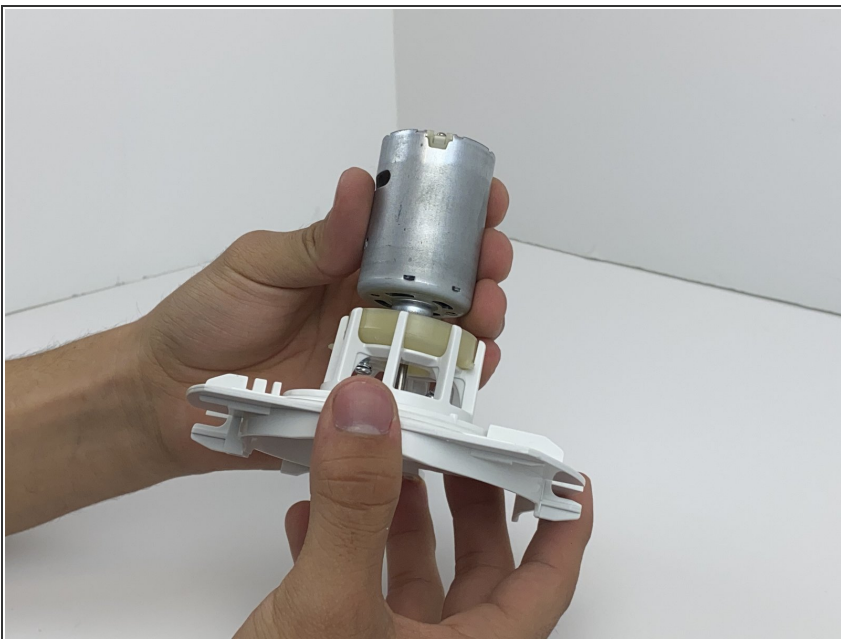
- Use an opening tool to pull off the black fan underneath the motor.
- ⓘ Be cautious, as removing this fan can take a bit of force.

Step 9



- Unscrew the two 10 mm Phillips #1 screws underneath the motor.

Step 10



- Replace old motor with replacement motor.

To reassemble your device, follow these instructions in reverse order. When reconnecting the wires, ensure you reattach each wire at the correct points to avoid confusion later.

