



MacBook Pro 15" Unibody 2.53 GHz Mid 2009 Hard Drive Replacement

Written By: Walter Galan



INTRODUCTION

Upgrade your hard drive for more storage space!



TOOLS:

- [Phillips #00 Screwdriver](#) (1)
- [Spudger](#) (1)
- [T6 Torx Screwdriver](#) (1)
- [P6 Pentalobe Screwdriver 2009 MacBook Pro Battery](#) (1)



PARTS:

- [MacBook and MacBook Pro \(Non-Retina\) SSD Upgrade Bundle](#) (1)
- [250 GB SSD](#) (1)
- [500 GB SSD](#) (1)
- [1 TB SSD](#) (1)
- [500 GB SSD Hybrid 2.5" Hard Drive Upgrade Kit](#) (1)
This kit contains the part and all tools needed.
- [1 TB SSD Hybrid 2.5" Hard Drive Upgrade Kit](#) (1)
This kit contains the drive and all tools needed.
- [500 GB 5400 RPM 2.5" Hard Drive](#) (1)
- [1 TB 5400 RPM 2.5" Hard Drive](#) (1)
- [MacBook Pro 15" Unibody \(Mid 2009 to Mid 2012\) Hard Drive Bracket](#) (1)
- [Universal Drive Adapter](#) (1)

Step 1 — Lower Case



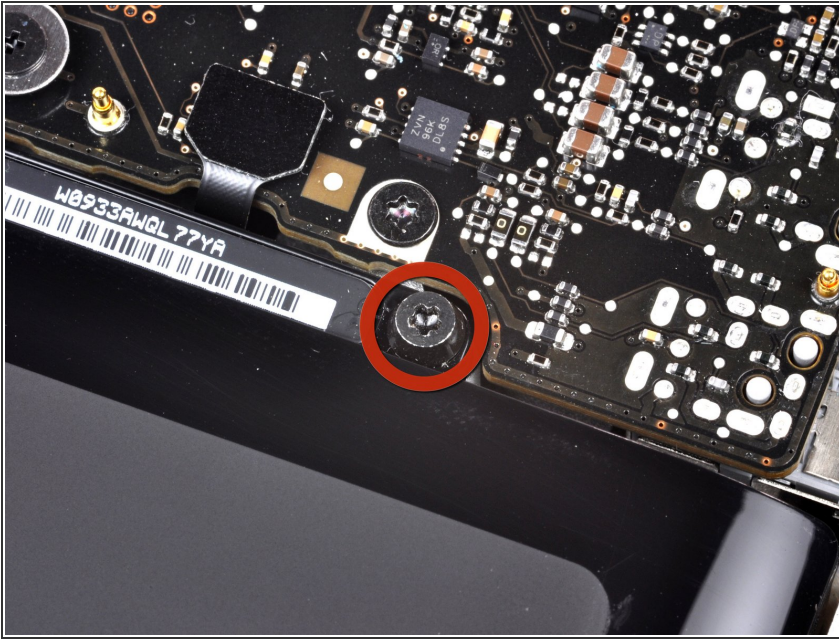
- Remove the following ten screws securing the lower case to the upper case:
 - Seven 3 mm Phillips screws.
 - Three 13.5 mm Phillips screws.

Step 2



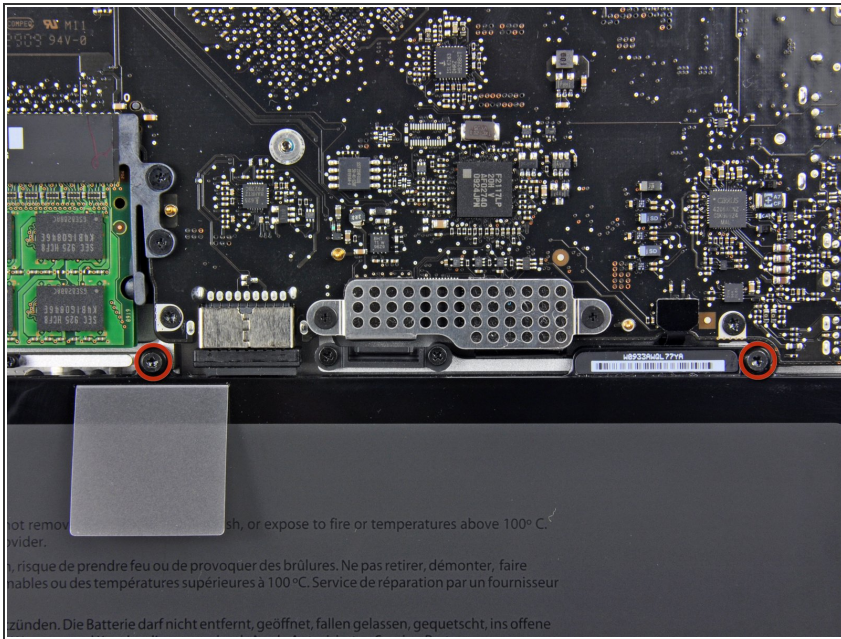
- Using both hands, lift the lower case near the vent to pop it off two clips securing it to the upper case.
- Remove the lower case and set it aside.

Step 3 — Battery



- Three Pentalobe screws secure the battery to the upper case. They can be removed with [this special driver](#).
- ⓘ If you don't have a Pentalobe driver, a 1.5 mm flathead screwdriver can be used in a pinch. Be sure the head of your flathead screwdriver fits snugly across two of the five "points" of the screw head before trying to break the screw free, as a loose fit will easily strip the screw head.
- ⓘ If the head of your screwdriver fits too loosely, find a bigger bit and file it down until it fits snugly before proceeding.
- ⓘ You do not necessarily have to follow steps 3-7 to remove the battery in order to replace the hard drive. However, it is recommended to remove all power sources from electronics before working on them.

Step 4



- Remove the two exposed five-point Pentalobe screws along the top edge of the battery.

Step 5



- Use the tip of a spudger to bend back the finger of the "Warning: Do not remove the battery" sticker while you remove the five-point Pentalobe screw hidden underneath.

Step 6



- Lift the battery by its plastic pull tab and slide it away from the long edge of the upper case.

⚠ Do not try to completely remove the battery just yet.

Step 7



- Tilt the battery back enough to access the battery cable connector.
- Pull the battery cable connector away from its socket on the logic board and remove the battery from the upper case.
- ✦ If you're installing a new battery, you should [calibrate](#) it as soon as possible.

Step 8 — Hard Drive



- Remove two Phillips screws securing the hard drive bracket to the upper case.
- ⓘ These screws are captive to the hard drive bracket.
- Lift the the retaining bracket out of the upper case.

Step 9



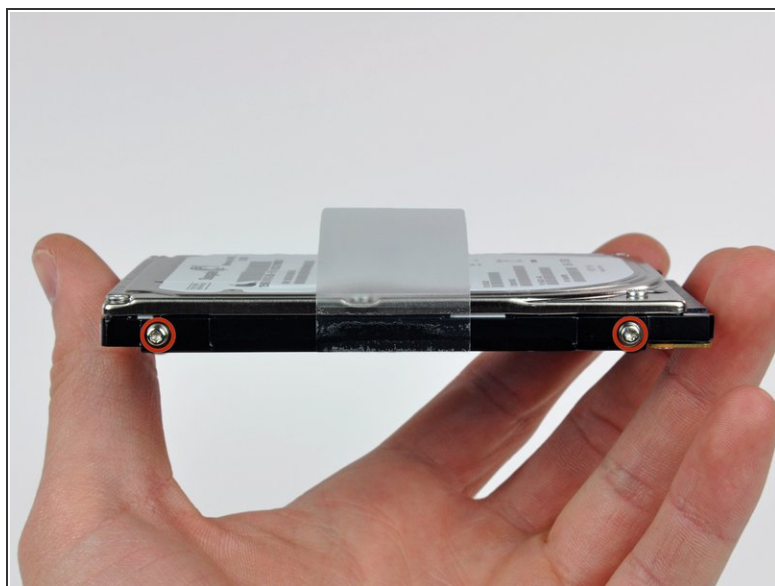
- Lift the hard drive by its pull tab and pull it out of the chassis, minding the cable attaching it to the computer.

Step 10



- Remove the hard drive cable by pulling its connector straight away from the hard drive.

Step 11 — Hard Drive



- Remove two T6 Torx screws from each side of the hard drive (four screws total).
- ☑ You'll need to transfer these screws to your new hard drive if you're changing drives.
- ⓘ If you are installing a new hard drive, we have an [OS X install guide](#) to get you up and running.

To reassemble your device, follow these instructions in reverse order.