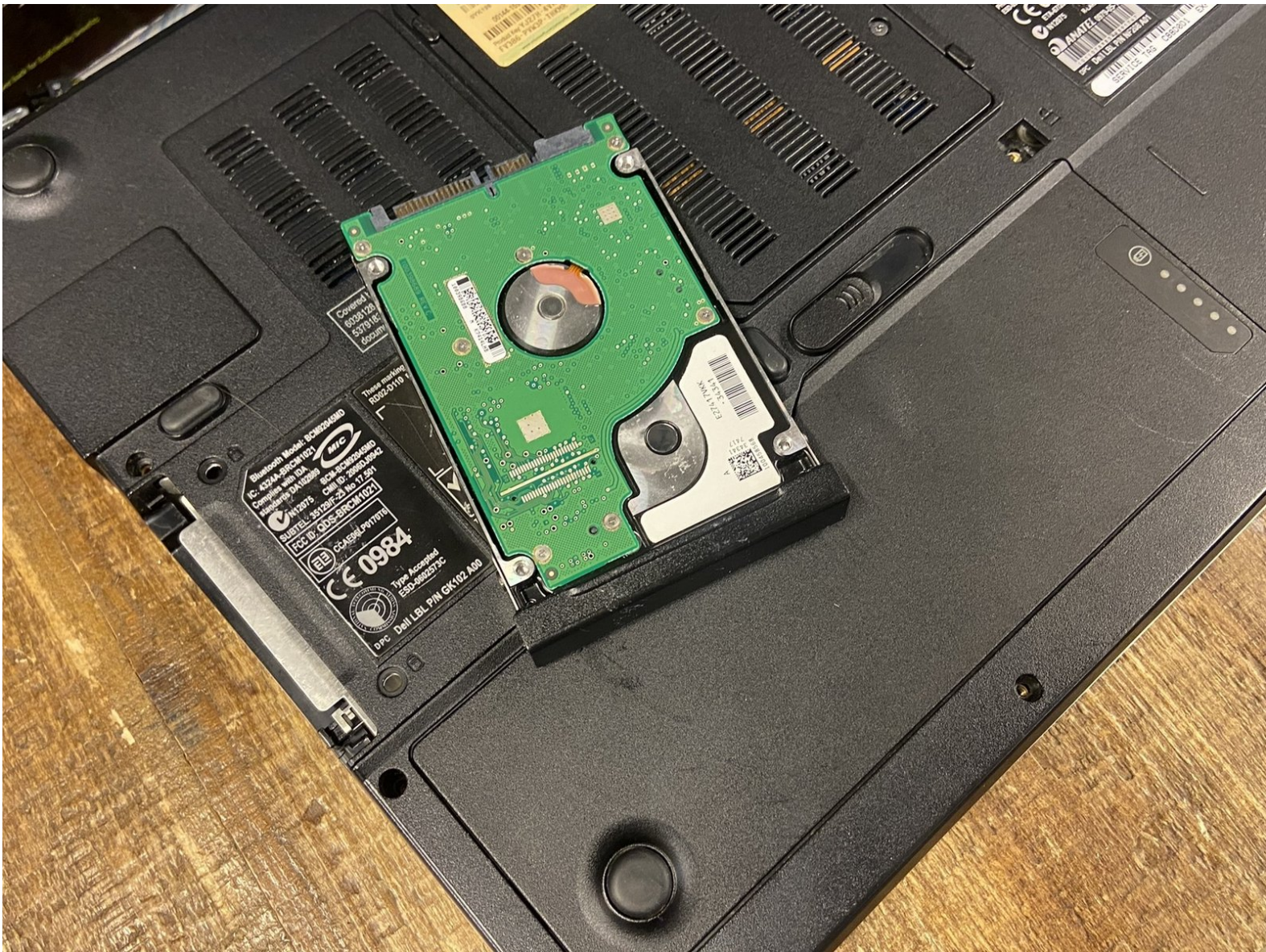




Dell Inspiron E1505 Hard drive Replacement

Power off the computer before starting.

Written By: TMG



INTRODUCTION

Power off the computer before starting.



TOOLS:

- [Phillips #1 Screwdriver](#) (1)



PARTS:

- [1 TB SSD](#) (1)
- [Crucial MX500 250 GB SSD](#) (1)
- [Crucial MX500 500 GB SSD](#) (1)
- [2 TB SSD](#) (1)

Step 1 — Battery



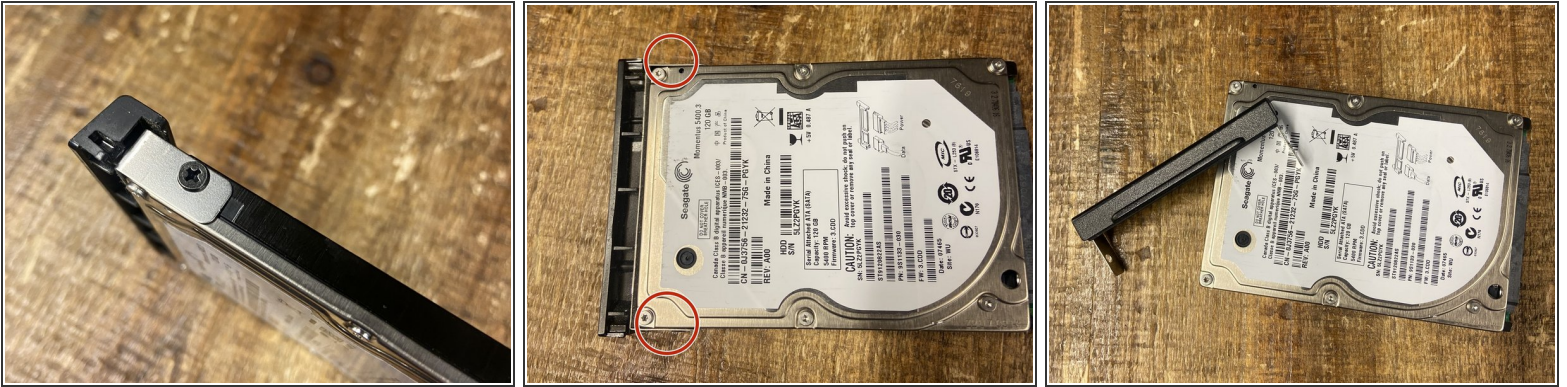
- Save work and shut down computer.
- Shut Lid and flip computer.
- Disconnect charger. (If applicable)
- Slide the battery eject and remove battery.

Step 2 — Removing the drive



- Make sure there are no screws holding the drive in.
- Slide the hard drive out of the laptop.

Step 3 — Hard drive bracket



- Remove screws from bracket.
- Attach bracket to new hard drive.
- Ta-da! You did it.

To reassemble your device, follow these instructions in reverse order.