



# Fix Oculus Quest 2 Controller Drift

After long periods of using the Oculus Quest 2,...

Written By: Seizure Salad



# INTRODUCTION

After long periods of using the Oculus Quest 2, controller drift can form, causing you to slowly move in-game when no input to the controller is provided. In this guide, you'll learn how to stop the annoying issue of controllers drifting.

## TOOLS:

[Jimmy](#) (1)  
[iFixit Opening Tool](#) (1)

## PARTS:

[Electrical Contact Cleaner](#) (1)  
[Compressed Air](#) (1)  
[Isopropyl Alcohol \(90% or Greater\)](#) (1)

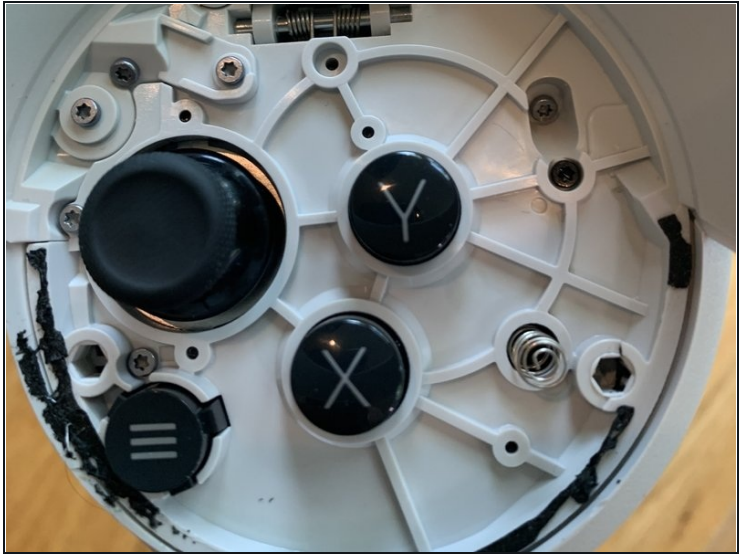
## Step 1 — Remove Battery From Controller



- Open the battery compartment and remove the AA battery inside.

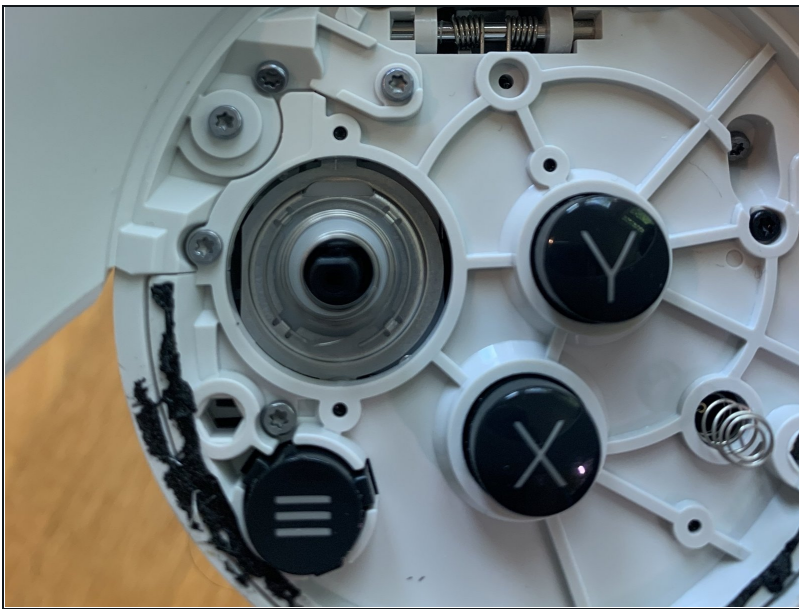


## Step 2 — Remove Controller Faceplate



- Remove the black plastic faceplate using an iFixit opening tool, Jimmy, or even a flathead screwdriver.
- ⓘ The plate is secured with adhesive and might be difficult to remove for the first time. You don't need to worry as the plate is additionally held in place with plastic posts.

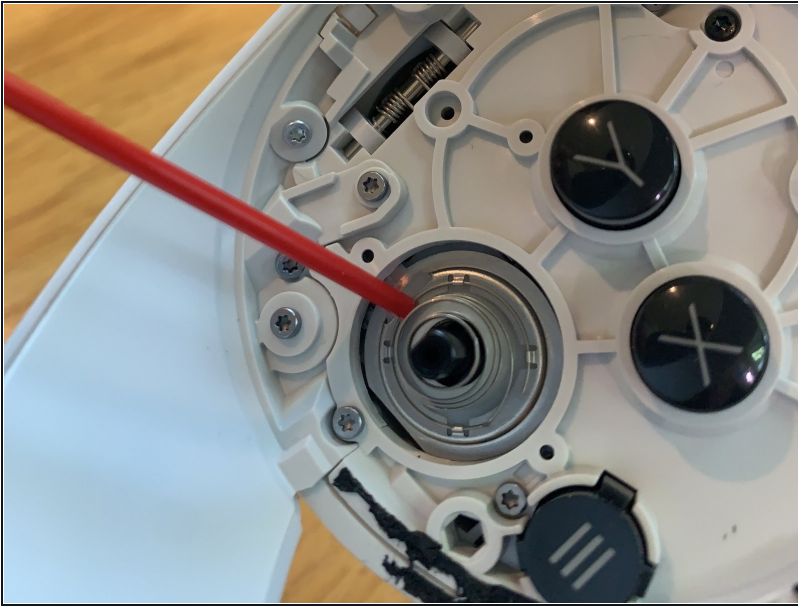
## Step 3 — Remove Joystick Cap



- Gently pull on the top of the joystick until the cap comes off of the joystick.
- ⓘ The cap might not detach from the touch sensor spring. In that case, let the spring remain attached to the joystick cap and don't forcibly remove it.

⚠ There is a spring that's located between the joystick housing and the cap. Don't bend or break this spring as it controls the touch sensor.

## Step 4 — Clean Controller Joystick



- Start by spraying some compressed air into the joystick housing to get rid of any large particles inside.
- Apply a small amount of contact cleaner or 90% or greater isopropyl alcohol to the joystick and move the joystick around, and then wait for it to dry.
- ⓘ Only use electrical contact cleaner or 90% or greater isopropyl alcohol. Other soaps and substances might be conductive and damage your controller.
- ★ Make sure to wait for the contact cleaner or isopropyl alcohol to dry before reassembling.

---

To reassemble your device, follow these instructions in reverse order. If you need a video demonstrating these steps, one can be found [here](#).