



Samsung DP515A2G Hard Disk Drive Replacement

In this guide, I will show you how to replace...

Written By: gatewaynomad



INTRODUCTION

In this guide, I will show you how to replace the hard drive in a Samsung All-in-One Desktop DP515A2G.

TOOLS:

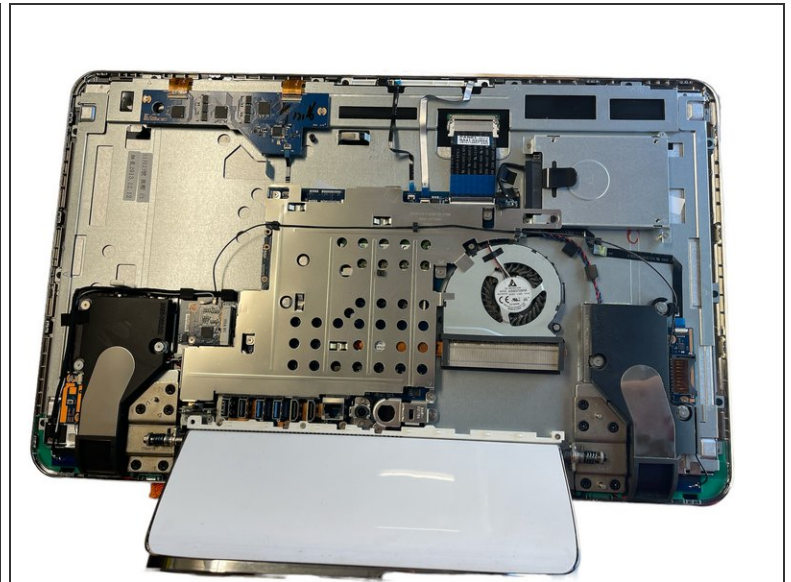
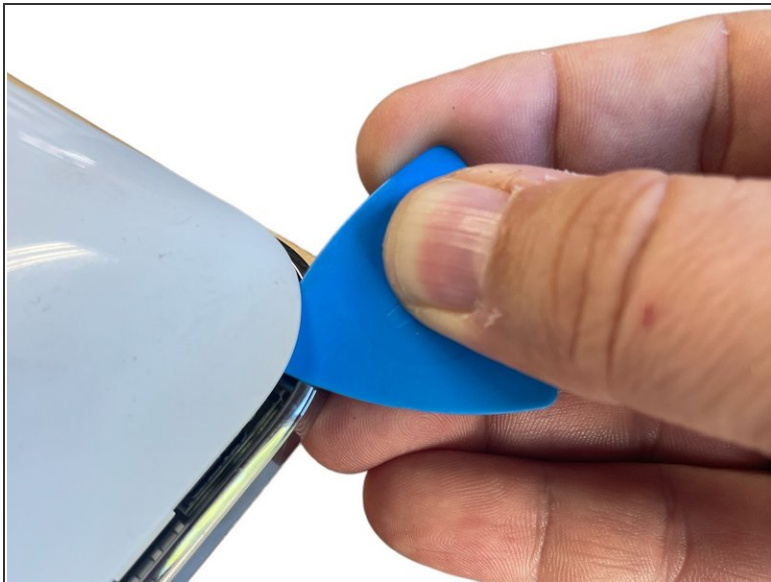
- [iFixit Opening Picks \(Set of 6\)](#) (1)
 - [Phillips #000 Screwdriver](#) (1)
-

Step 1 — Hard Disk Drive



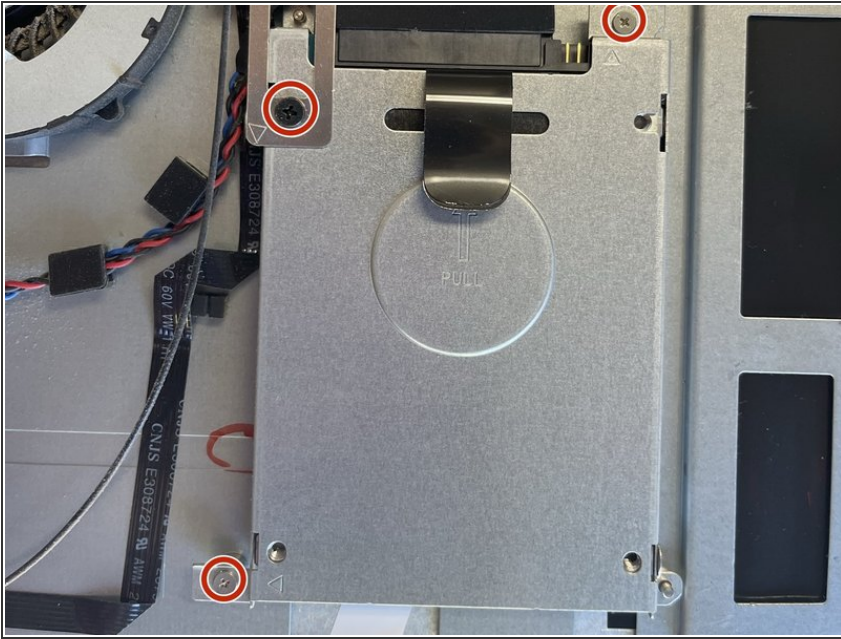
- Put the Samsung dp515a2g face down on a surface that will not scratch the monitor.

Step 2



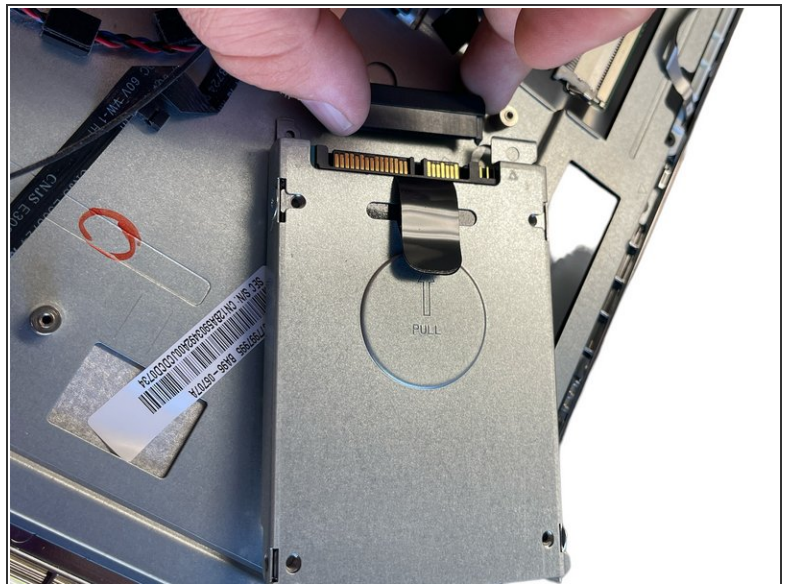
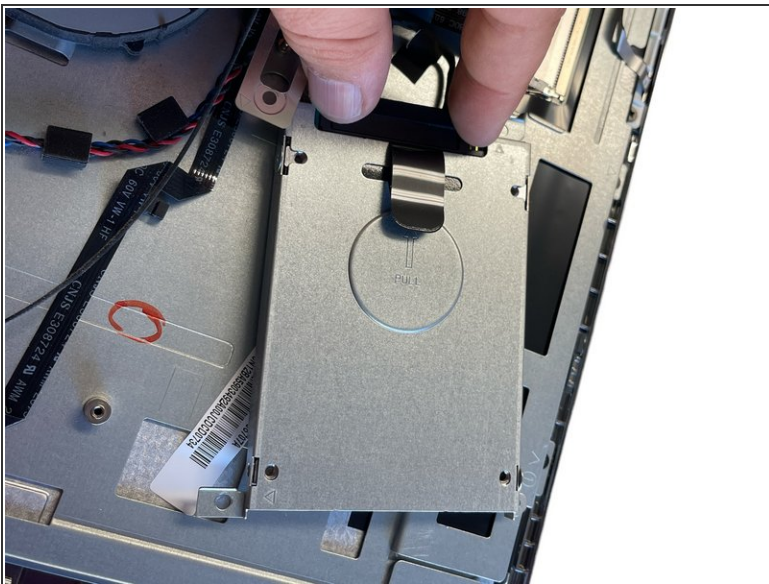
- Gently insert an [opening pick](#) in the seam between the back panel and bezel.
- Run the [opening pick](#) along the seam, carefully freeing the clips holding the back panel in place.
- The back panel should come away without resistance.

Step 3



- Remove the 3 screws highlighted in red with a [000 Screwdriver](#)

Step 4



- Once the shroud surrounding the hard drive is free, disconnect the hard drive by grasping the connector with one hand, and the shroud with the other hand and gently pull them apart.

⚠ Do not put the wires connecting the hard drive.

Step 5



- Using the [000 Screwdriver](#) remove the screw on each side.
- The hard drive should pull free of the shroud.

To reassemble your device, follow these instructions in reverse order.