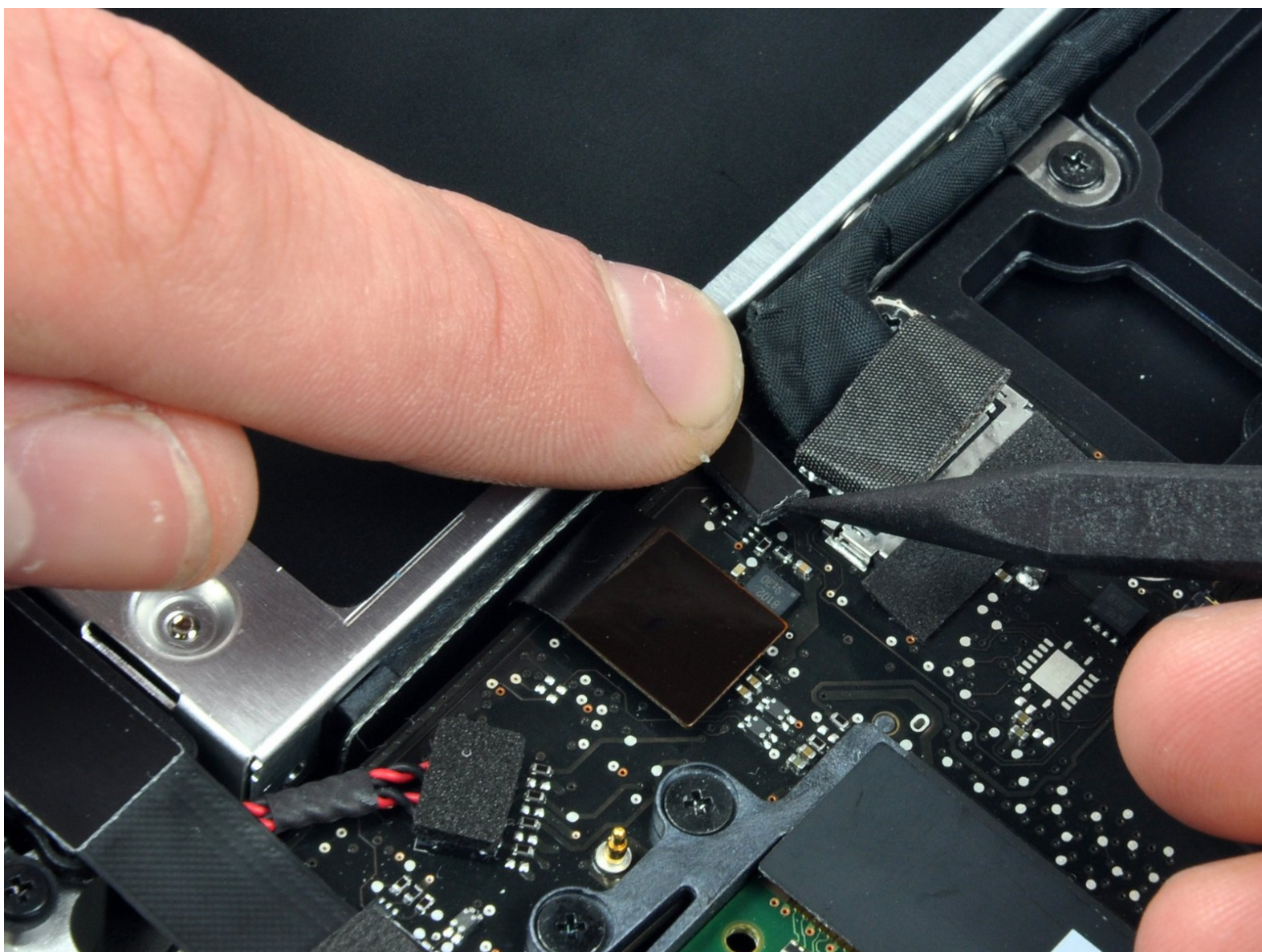




# MacBook Pro 15" Unibody 2.53 GHz Mid 2009

## Logic Board Replacement

Written By: Walter Galan



# INTRODUCTION

This guide is an internal private guide used as a prereq.

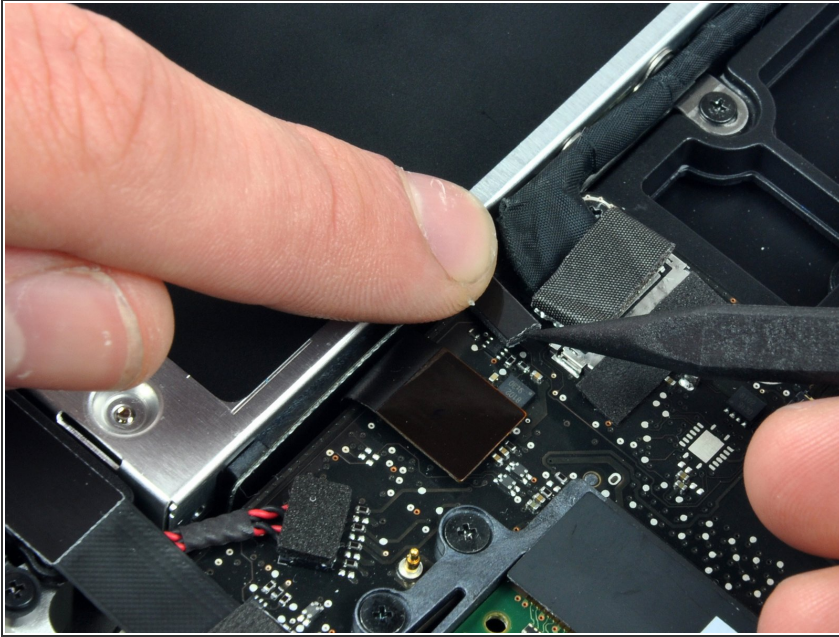


## TOOLS:

- [T6 Torx Screwdriver](#) (1)
  - [Spudger](#) (1)
  - [Phillips #00 Screwdriver](#) (1)
-

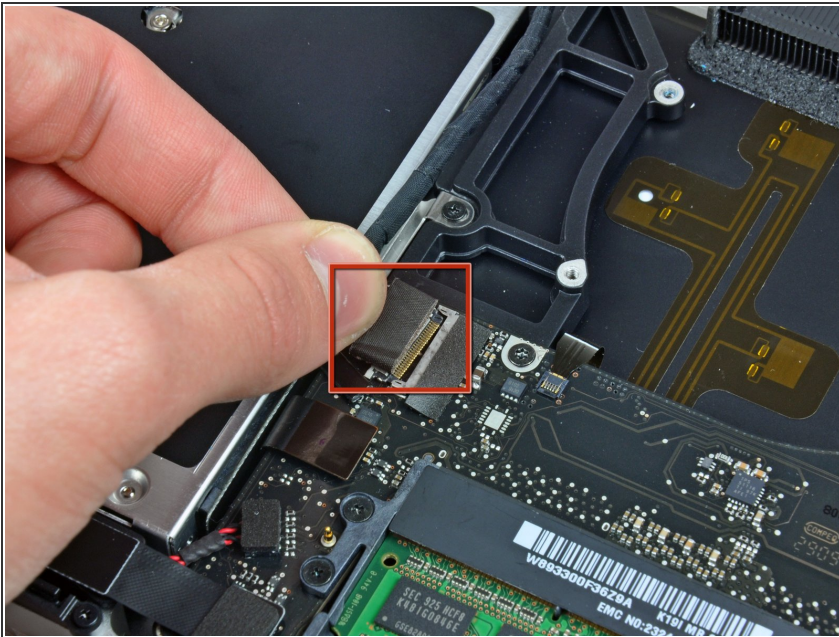


## Step 1 — Logic Board



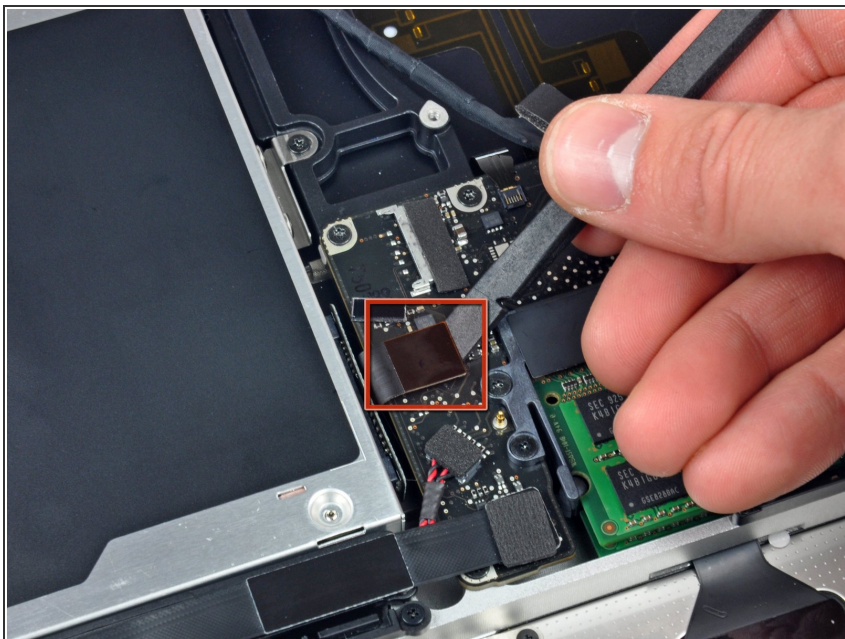
- ⚠ Apple sticks a small strip of clear plastic with adhesive applied to one side to the logic board behind the camera cable connector to keep it in its socket. When moving it out of the way, be sure not to break any surface-mount components off the logic board.
- Hold the end of the cable retainer down with one finger while you use the tip of a spudger to slightly lift the other end and rotate it away from the camera cable connector.

## Step 2



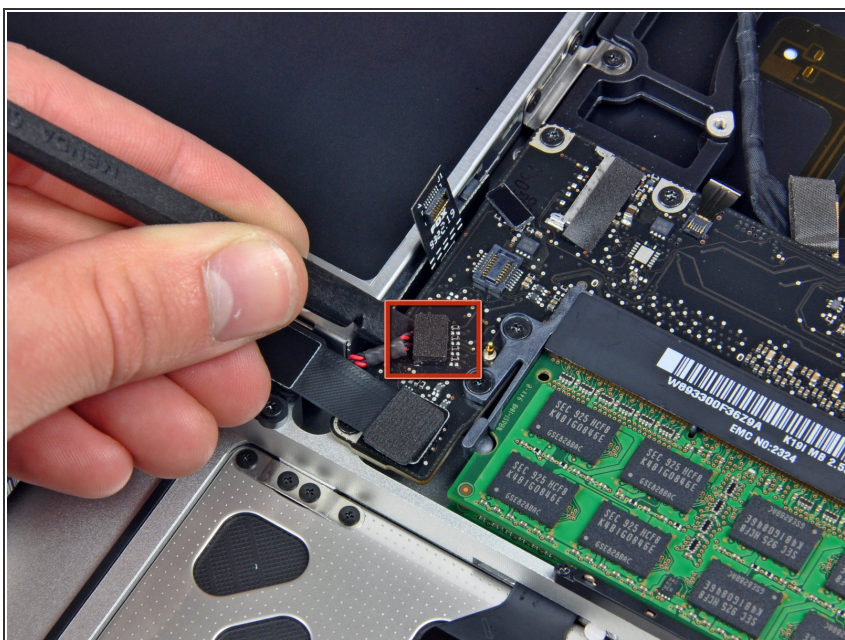
- Disconnect the camera cable by pulling the male end straight away from its socket.
- ⚠ Pull the connector parallel to the face of the logic board, not straight up.

### Step 3



- Use the flat end of a spudger to pry the optical drive cable connector up off the logic board.

### Step 4



- Using the flat end of a spudger, pry the subwoofer connector straight up off the logic board.

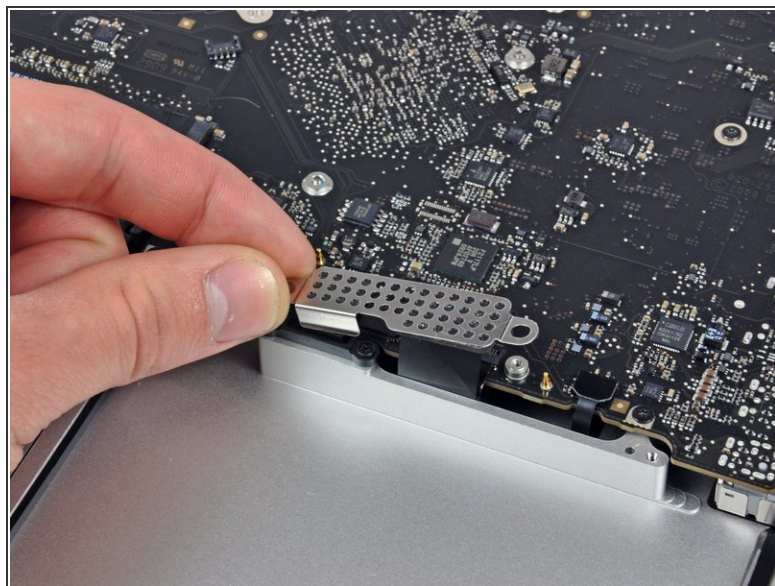
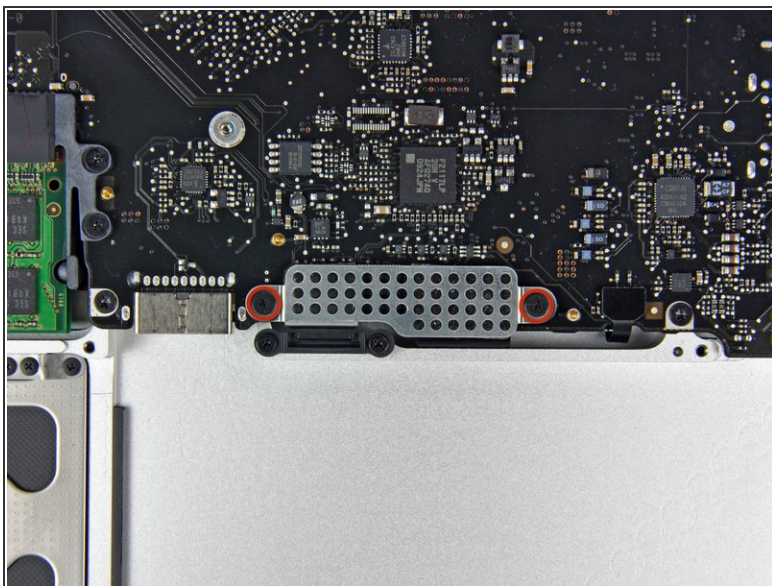


## Step 5



- Use the flat end of a spudger to pry the hard drive/IR sensor cable connector up off the logic board.

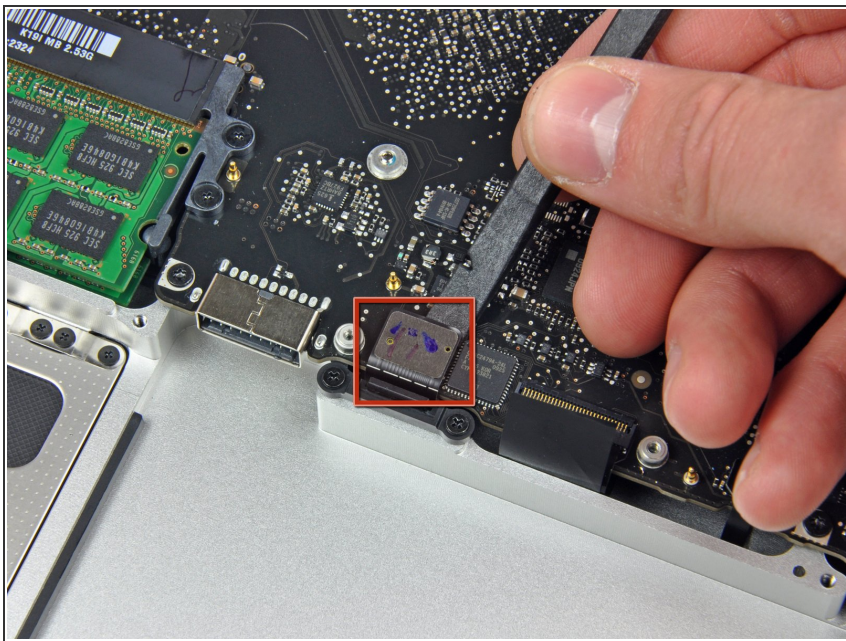
## Step 6



- Remove the two 1.5 mm Phillips screws securing the cable cover to the logic board.
- Lift the cable cover out of the upper case.

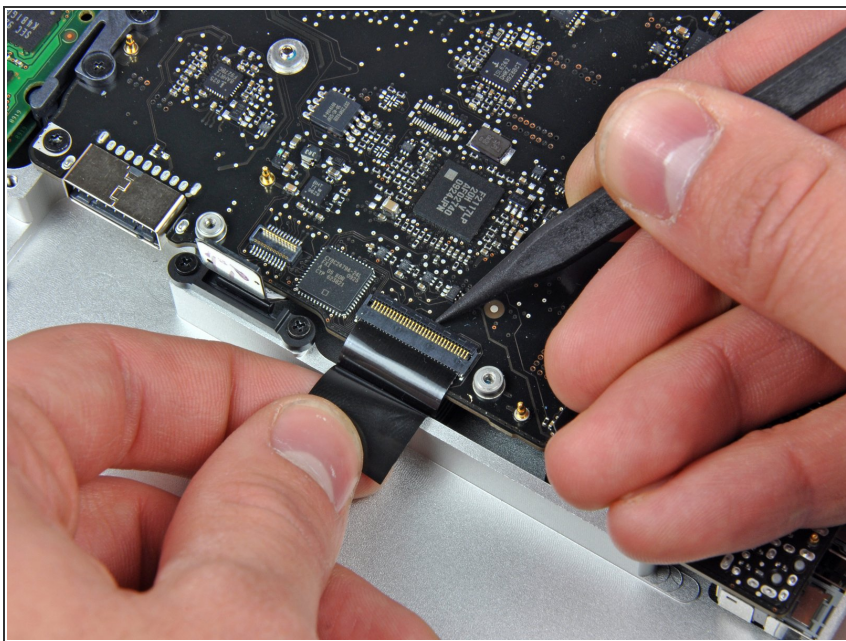


## Step 7



- Use a spudger to pry the trackpad flex ribbon cable connector up off the logic board.

## Step 8



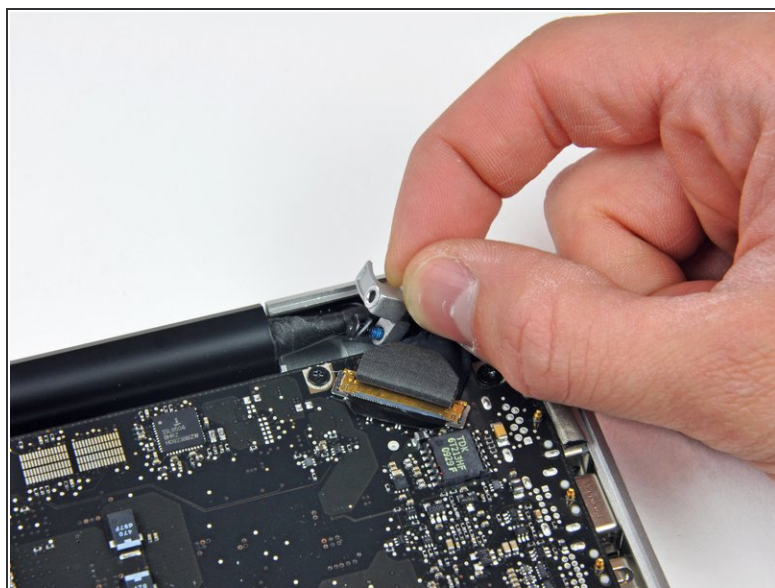
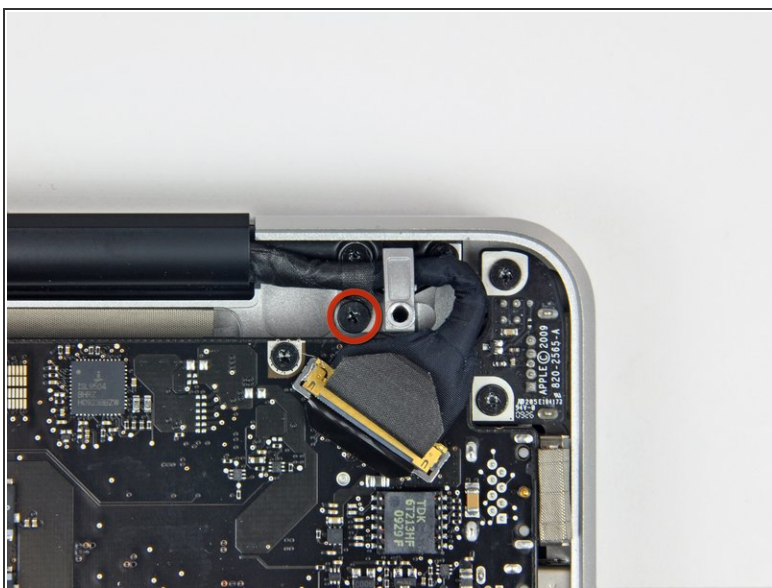
- Using the tip of a spudger, flip up the keyboard ribbon cable retaining flap.
- Pull the keyboard ribbon cable straight out of its socket.

## Step 9



- Use a spudger to pry the battery indicator ribbon cable connector up off the logic board.

## Step 10

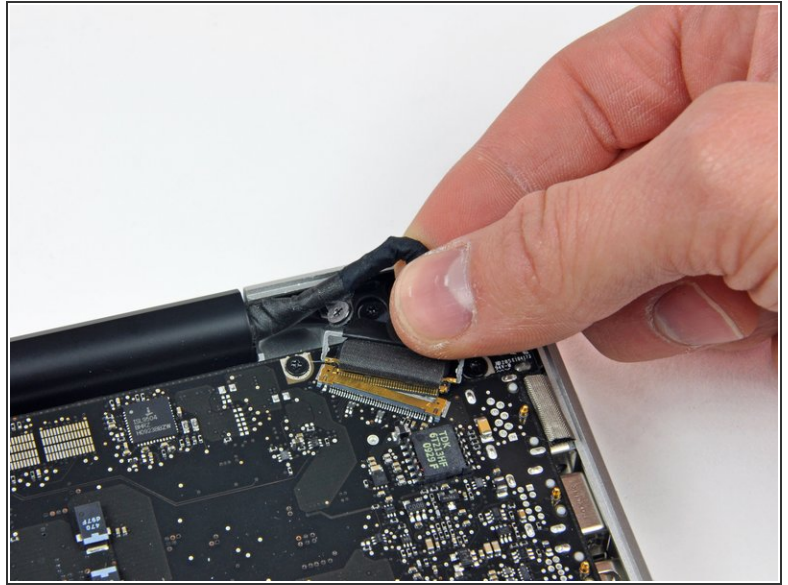
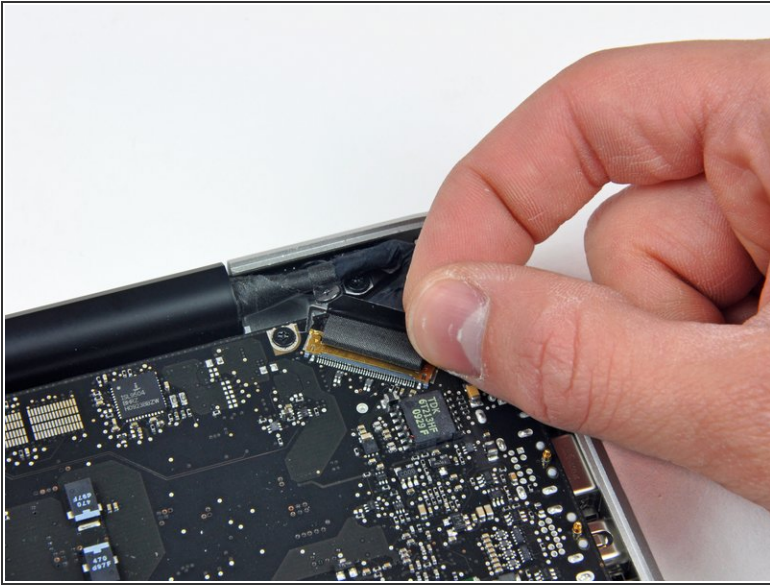


- Remove the single 7 mm Phillips screw securing the display data cable retainer to the upper case.
- ⓘ This screw may remain captive in the display data cable ground loop. If replacing the display, be sure to transfer this screw to the new unit.
- Remove the display data cable retainer from the upper case.

This document was generated on 2020-11-28 01:37:28 AM (MST).



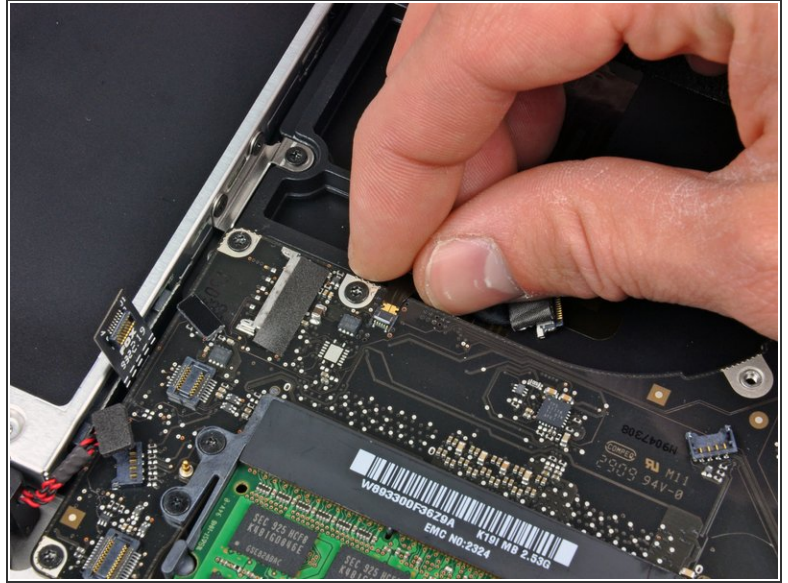
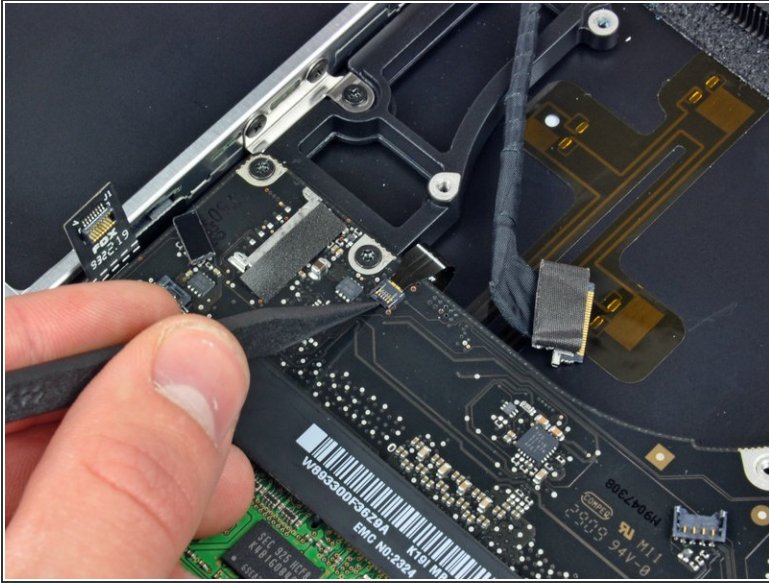
## Step 11



- Grab the plastic pull tab secured to the display data cable lock and rotate it toward the DC-in side of the computer.
  - Pull the display data cable connector straight away from its socket.
- ⚠ Make sure to pull the connector parallel to the face of the logic board, not straight up from its socket.

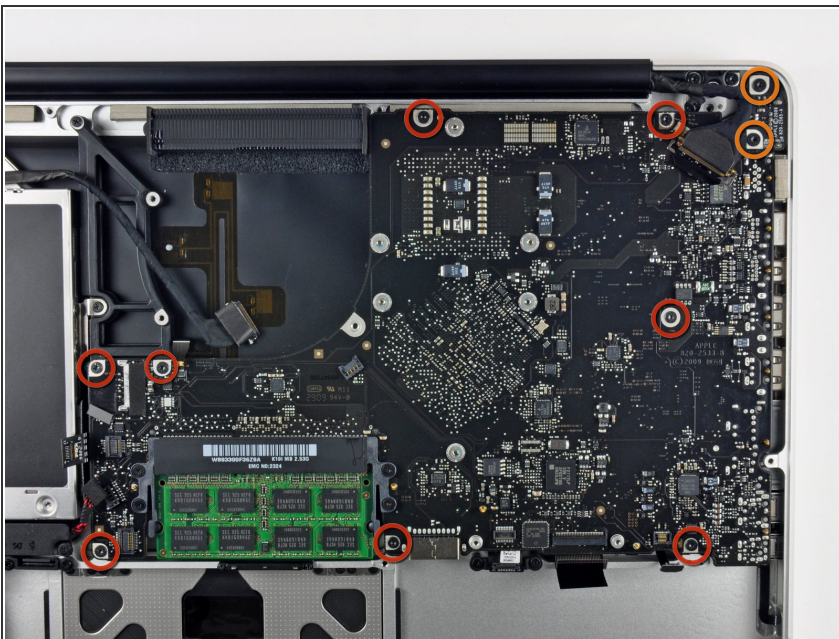


## Step 12



- Using the tip of a spudger, flip up the keyboard backlight ribbon cable retaining flap.
- Pull the keyboard backlight ribbon cable straight out of its socket.

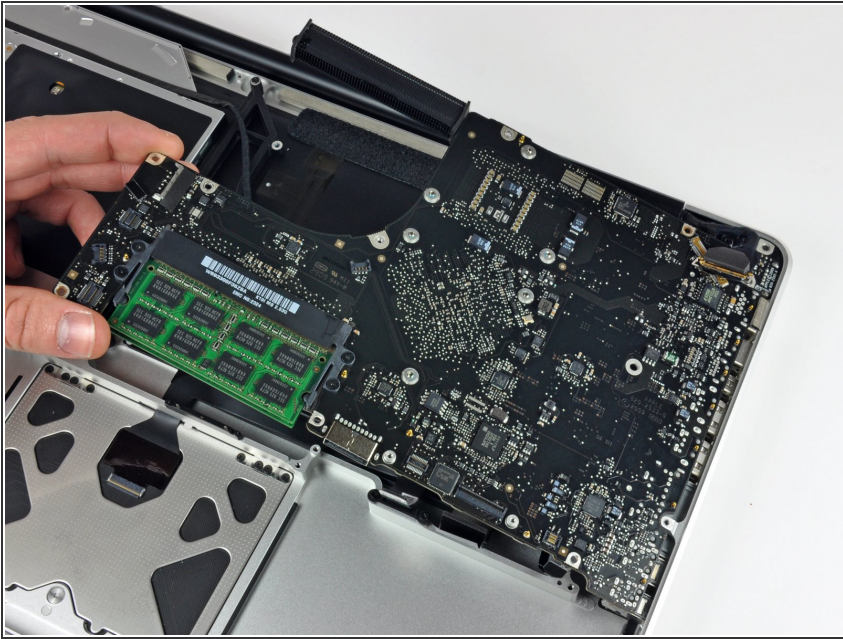
## Step 13



- Remove the following screws:
  - Eight 3.5 mm T6 Torx screws securing the logic board to the upper case.
  - Two T6 Torx screws securing the DC-In board to the upper case.

**⚠ Do not remove the logic board yet!**  
There are connectors attached to the underside of the logic board that must first be disconnected.

## Step 14



- Carefully lift the logic board assembly from the left side and work it out of the upper case, minding the port side that may get caught during removal.



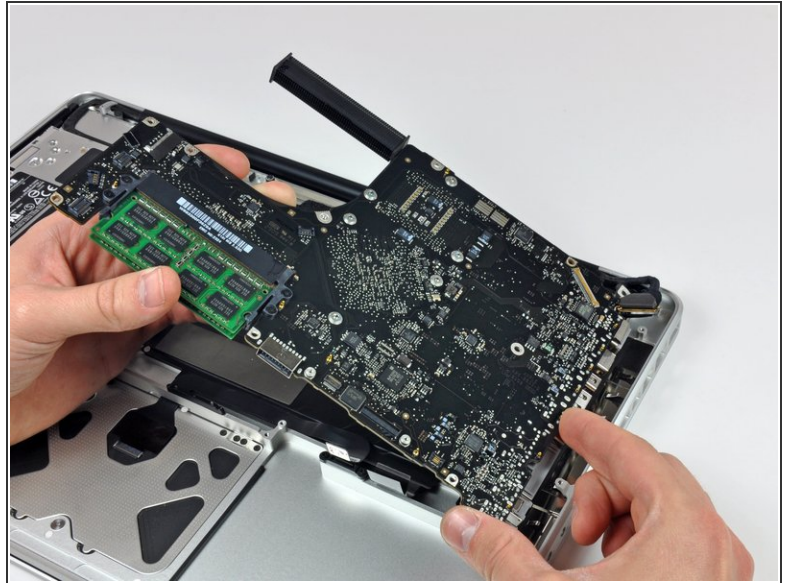
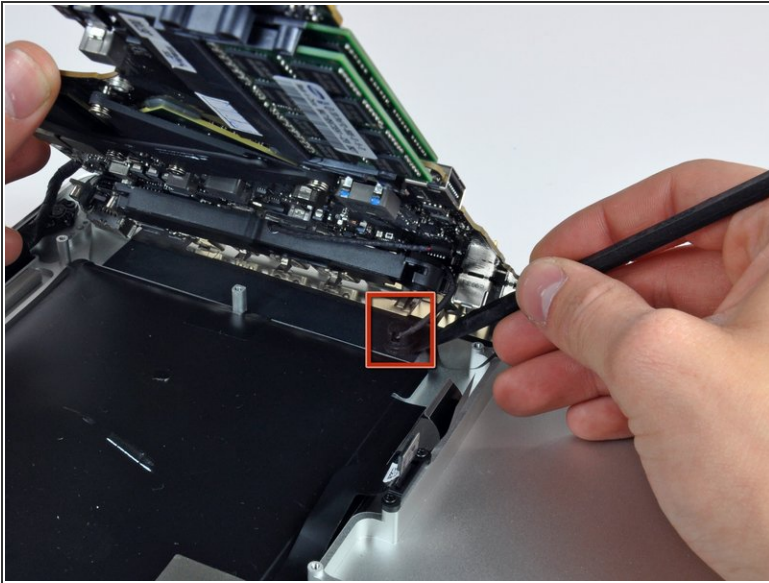
Do not entirely remove the logic board yet!



Ensure that the logic board is free from all connections to the upper case (except the battery connector) before proceeding.



## Step 15



- Lift the logic board enough to gain clearance and use a spudger to pry the microphone up off the upper case.
- Slide the logic board away from the port openings and lift the assembly out of the upper case.
- ☑ Before reinstalling the logic board, it is easiest to press the microphone down into its housing in the left speaker to keep it in place.

To reassemble your device, follow these instructions in reverse order.