



ilo 1Gb Mp3 Player Front External Control Buttons Replacement

How to Remove and install the front external control buttons.

Written By: tj курт01

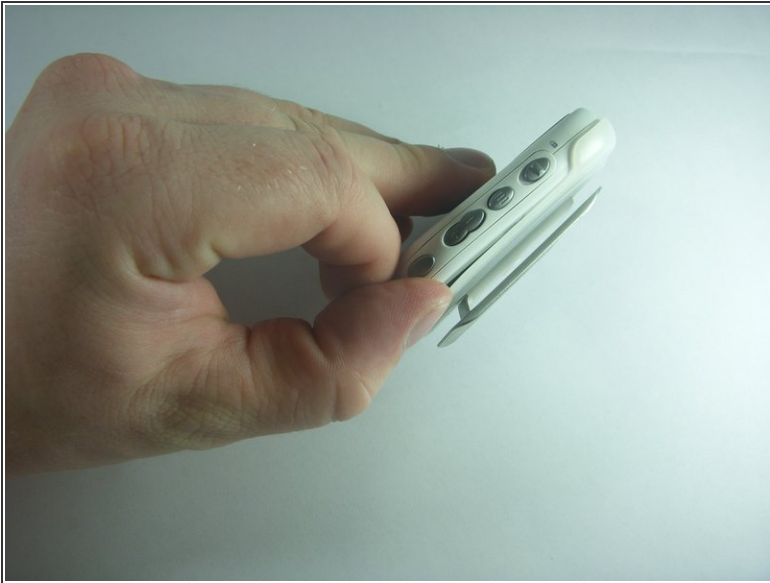




TOOLS:

- [Phillips #00 Screwdriver](#) (1)
- [iFixit Opening Tools](#) (1)

Step 1 — Belt Clip



- Remove the belt clip by pulling the clip casing up and away from the device starting at the top over the slightly protruding headphones jack.

Step 2 — Battery Cover



- Remove the battery cover by gently pushing inward on the arrow on the cover.
- While maintaining pressure push the cover upward.

Step 3 — Battery



- Remove the Battery from the socket
- ⓘ When installing the battery take note of the signs displayed in the socket to determine which direction the negative and positive ends should be.

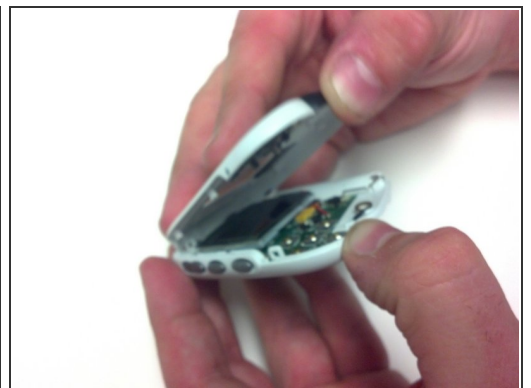
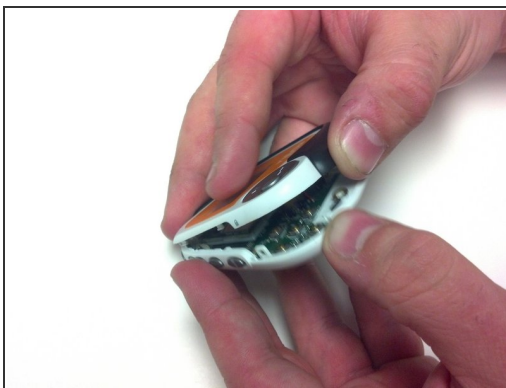
Step 4 — ilo 1 Gb Mp3 Player Motherboard



- Under the cover you will find Three (3) 5mm screws that will need to be removed. For this you will need to use the PH00 screw tip included in your iFixit kit. Make sure to keep track of these screws as they will need to be reinserted during the reassembly of your device.

i These screws are different from the two other screws from the interior

Step 5



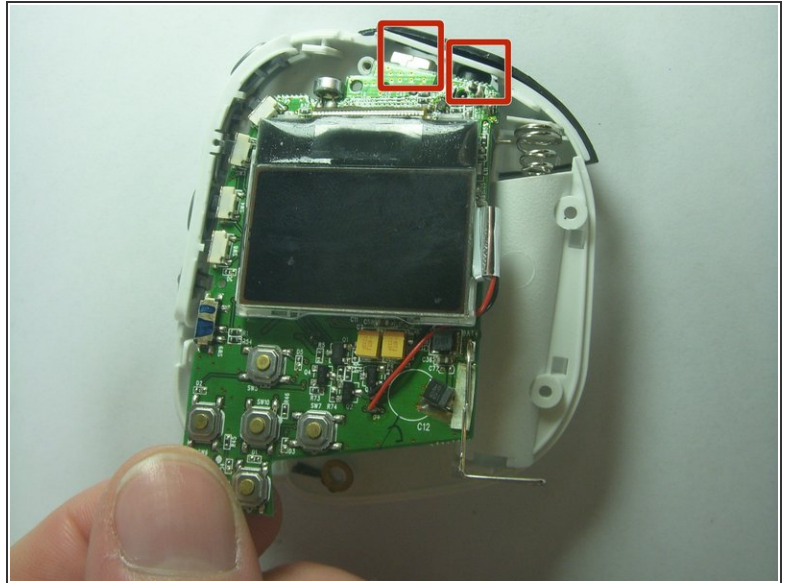
- Separate the front housing from the back housing using your thumbs. Carefully pry around the edge of the bottom of device then be sure to unhook the clip inside just below the hold switch.

Step 6




- Once you have removed the front housing and exposed the internal board and screen locate and Remove the Two (2) 4mm PH00 screws on the board.
- ⓘ One is located in the top middle above the screen and the other is located at the bottom left between the Stop and Back buttons.

Step 7



- Once those screws are removed, gently remove the board from the rear casing.

 When installing the motherboard into the case be especially careful with the headphone and USB jacks located at the top of the motherboard. These should be slid into their sockets first.

Step 8 — Front External Control Buttons



- i** There are two parts to the face button panel. The center button or Enter is held on by three pins at the top left and right sides and at the bottom left side of the panel; when you're looking at the device from the inside.
- Use the bit spanner bit tool to gently pull upward on each of the arms to remove them from the pins.

Step 9



- The main plate of the face buttons is held on by Three arms on pins.
- ☑ You must first have removed the center button from the pins to access the main plate where it is attached to the same pins.
- Use the bit spanner bit tool to gently pull upward on each of the arms to remove them from the pins.

Step 10



! All pins that hold the arms of the center button and the main plate of the face buttons have a slight flange at the top acting to hold the arm sockets. This is designed into the device at manufacture and removing the arm sockets will deteriorate the flange.

i If removing the buttons for replacement is necessary then after replacement achieving a similar flange may be possible by tapping on the pin after replacement of the arm sockets with the butt of the screw driver. This might not work though as the pins on our ilo broke off during button removal.

To reassemble your device, follow these instructions in reverse order.