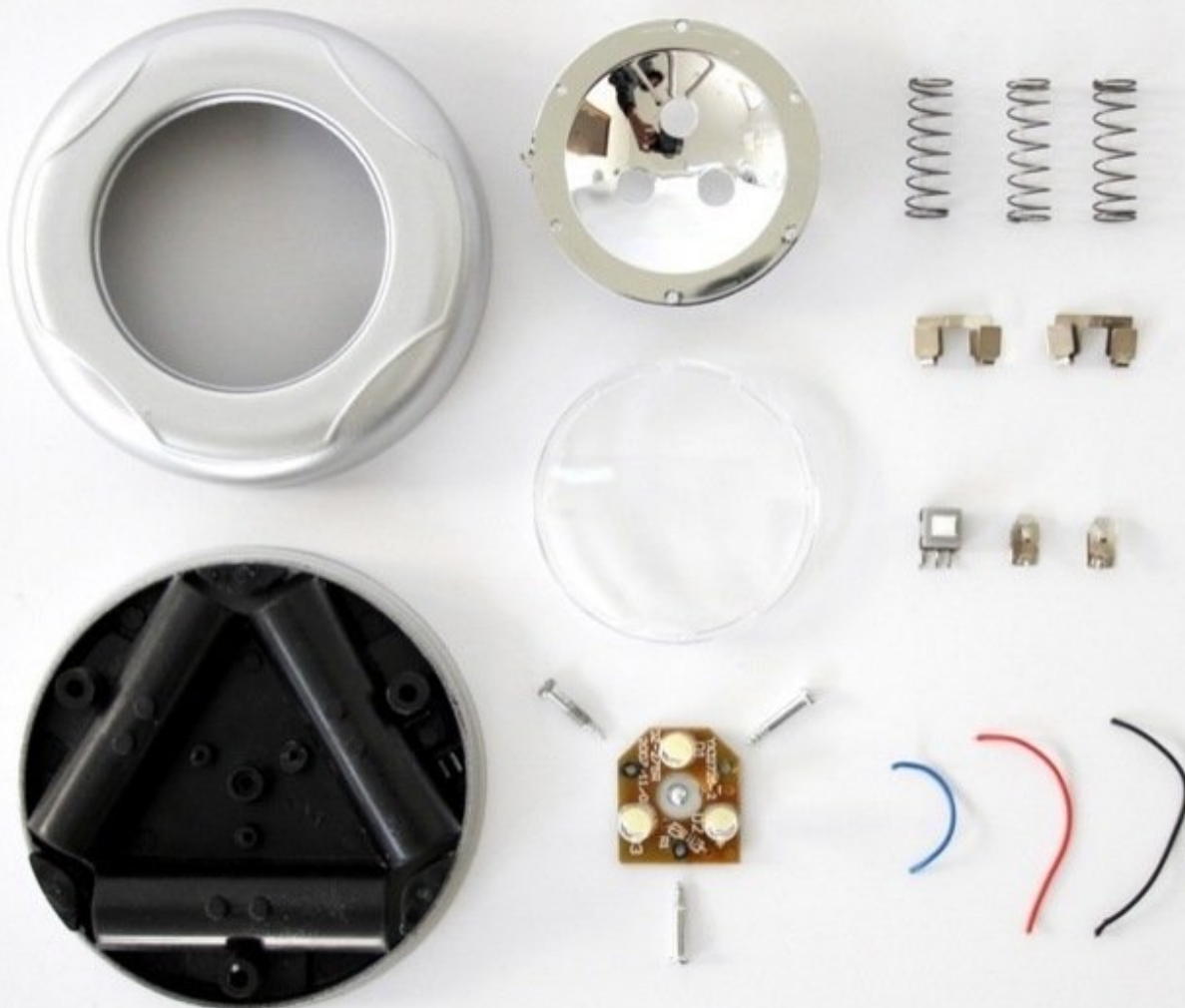




LED touch light Teardown

This'll be useful if you have to redesign such a light, which happens to be our class project.

Written By: Vimal



INTRODUCTION

LED touch light Teardown



TOOLS:

- [Phillips #1 Screwdriver](#) (1)
 - [Precision Utility Knife](#) (1)
-

Step 1 — LED touch light Teardown



- The assembled light.

Step 2



- Twist the mounting plate clockwise, then lift to remove it.

Step 3



- Remove the three AAA batteries from their holders.

Step 4



- Loosen and remove the four Phillips screws.

Step 5



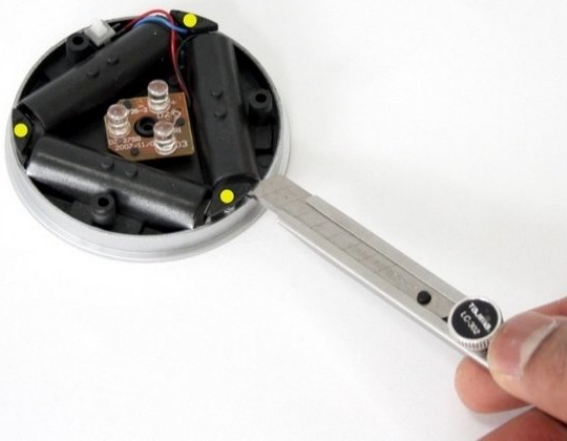
- Having removed the four Phillips screws in the previous step, separate the assembly as shown.

Step 6



- Remove the three springs.

Step 7



- Using the craft knife, prise and loosen the three tabs shown from their mounting points. This will make removing the battery contacts easier in the next step.

Step 8



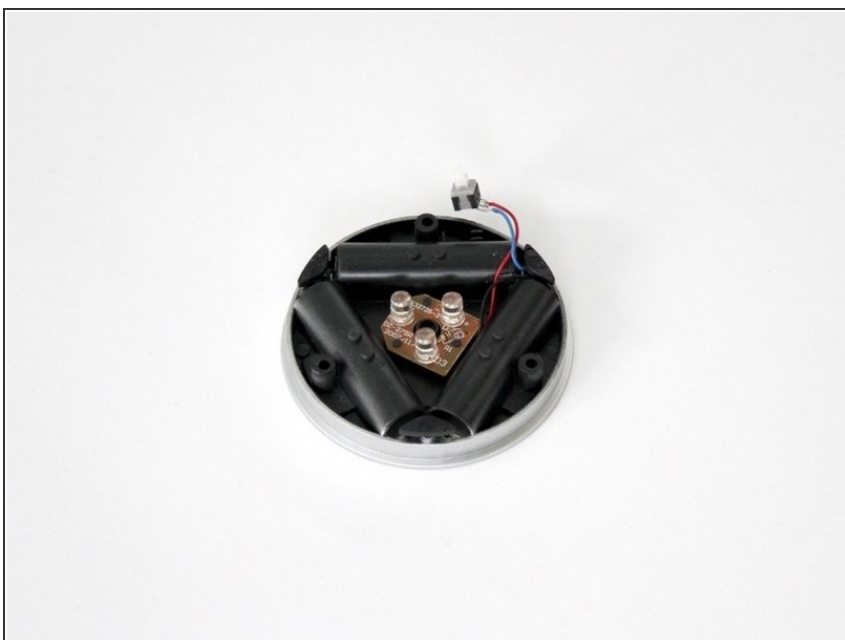
- Remove the battery contacts from their mounts, taking care to separate the soldered electrical wires without damaging nearby parts. Note the two smaller contacts which connect to the circuit board.

Step 9



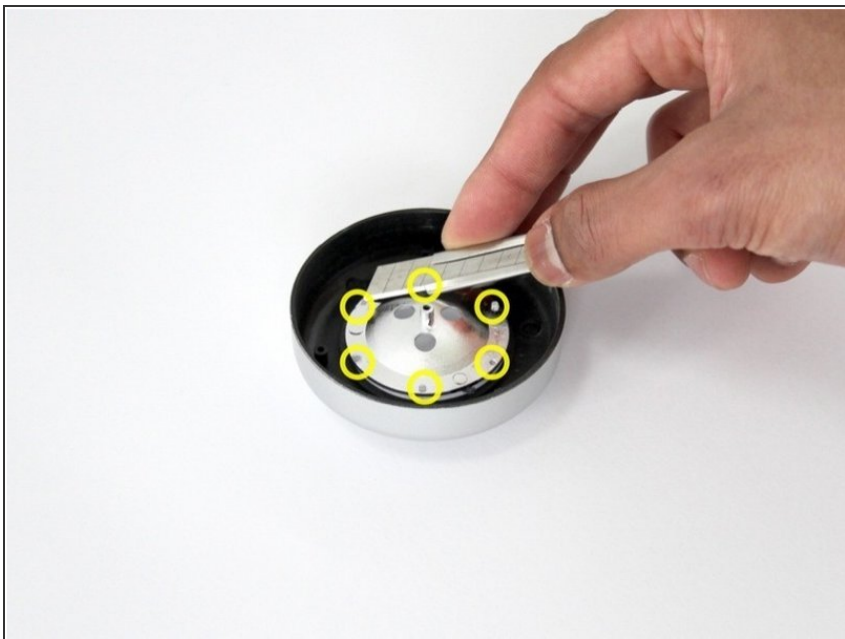
- Using the craft knife, slice off the black plastic extrusions at the indicated positions. These tabs secure the circuit board to the main assembly.

Step 10



- Lift and separate the power switch from the main assembly.

Step 11



- Using a similar technique to that exercised in step 9, slice off the clear plastic extrusions at the indicated positions. These extrusions secure the lens, case and reflector elements.

Step 12



- The separated lens, case and reflector elements.

Step 13



- The full assortment of separated parts.

To reassemble your device, follow these instructions in reverse order.