



# Christmas Tree Teardown

Written By: baq



## INTRODUCTION

The holidays are about to finish and at some point, some of you will have to disassemble their christmas trees. You may take this teardown as an example of how to do it.

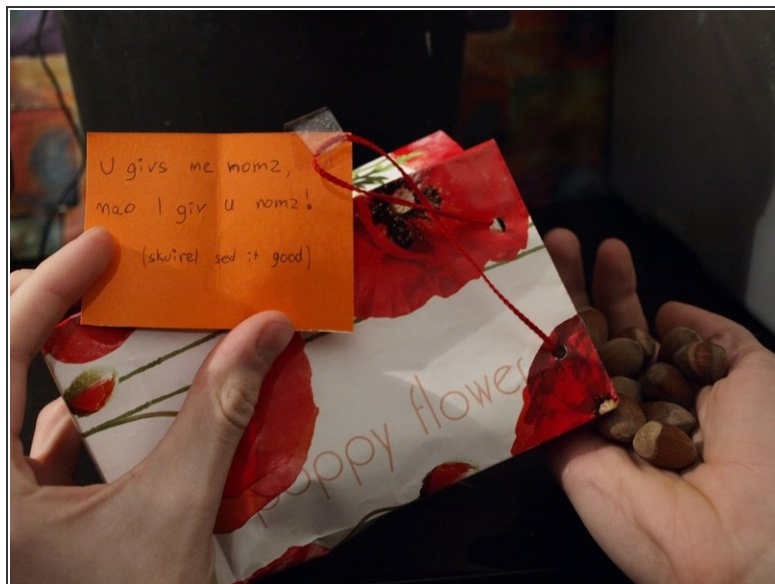
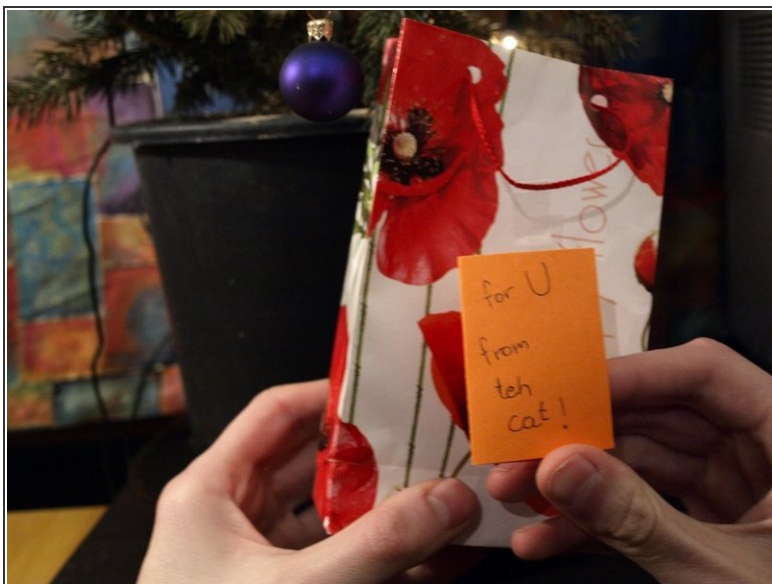


## Step 1 — Christmas Tree Teardown



- The teardown shows a christmas tree Nano, but should you have a bigger - Classic one, you may follow these steps - upscaling everything.

## Step 2



- First order of business: presents!
- Use caution and joy when opening your presents.

### Step 3



- Disconnect the power plug
- Remove the power socket, should there be one on your tree.

### Step 4



- To remove the baubles, lift them gently and untangle the string from the branch.



## Step 5



- If you find a capacitor on your christmas tree, straighten its leads to detach it.
- All discrete electronic elements should be removed in this manner.

## Step 6



- Protective hand-wear may come in handy.



## Step 7



- Remain gentle, even when an element is very difficult to untangle.

## Step 8



- To remove the top ornament, lift it upwards.

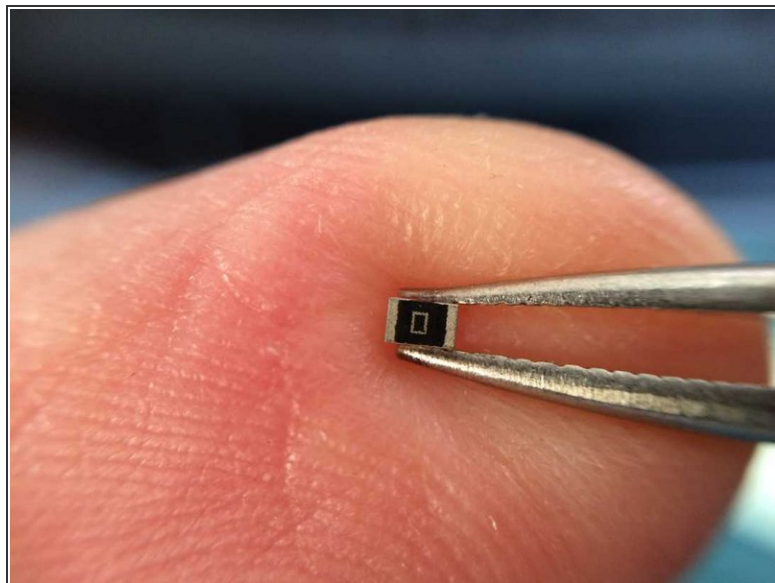
## Step 9



- Finally, remove the lights.
- Begin with the light that was placed as the last. If you are uncertain, start from the topmost one.



## Step 10



- Before you run around barefoot in celebration, clean up.
- Check amongst the floor sweepings for any surface mount components which may have gone missing during assembly, and carefully put them aside
- The christmas tree is disassembled!
- ⓘ Check whether your local council will take your old Christmas tree for recycling. Burning is not recommended on account of the CO2 emissions it would produce.
- Thank you for reading, hope you are having a happy holiday.
- ✦ Fix yourself a wonderful New Year in 2019!