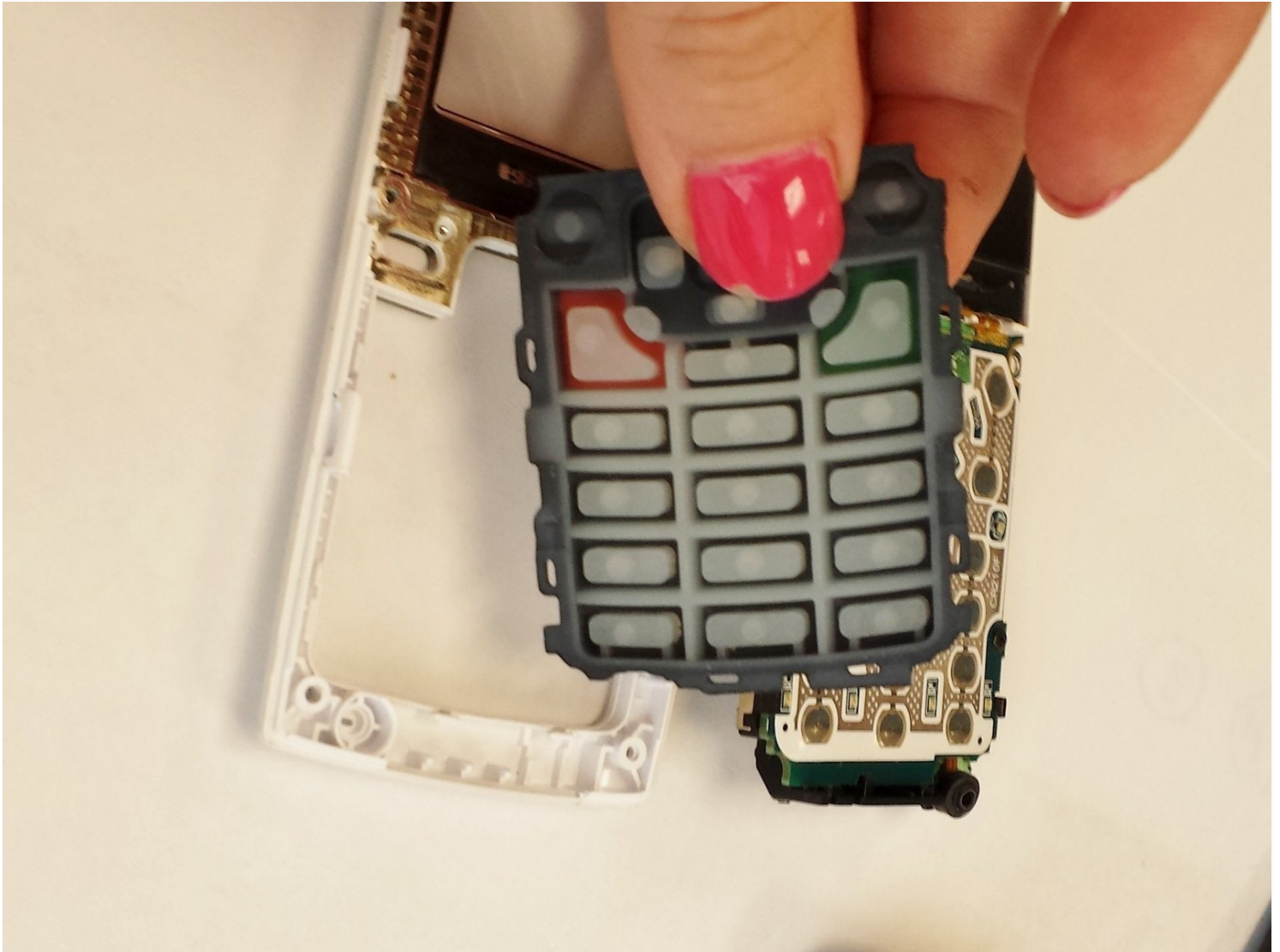




# Samsung SPEX SCH-R210 Keypad Replacement

This is an easy DIY guide on how to replace the...

Written By: Susan



# INTRODUCTION

This is an easy DIY guide on how to replace the Samsung SPEX SCH-R210 keypad. You will need 2 different screwdrivers for this guide. This requires removing the back cover, the battery, and the motherboard. The keypad will pop out easily after the motherboard is removed.

---

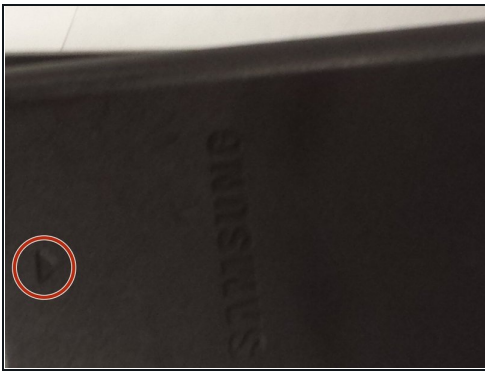
## TOOLS:

Phillips #00 Screwdriver (1)

1.5mm Hex Screwdriver (1)

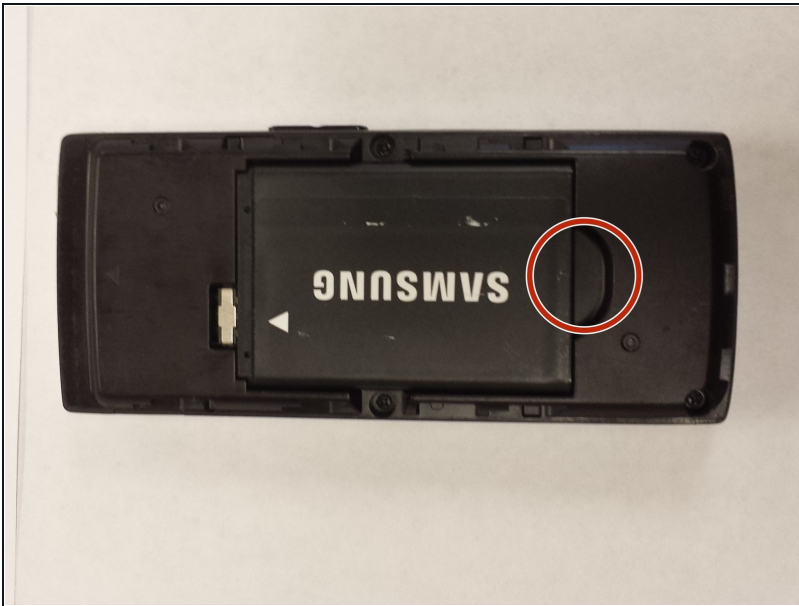
---

### Step 1 — Back Cover



- Lay the phone on its front side so the back is visible.
- Use your thumb to gently and firmly press down on the triangle arrow found on the cover of the phone.
- Press down on the arrow until you hear a popping sound, which will remove the cover of the phone.
- Slide the cover down from the phone to remove it. Set the cover aside.

## Step 2 — Battery



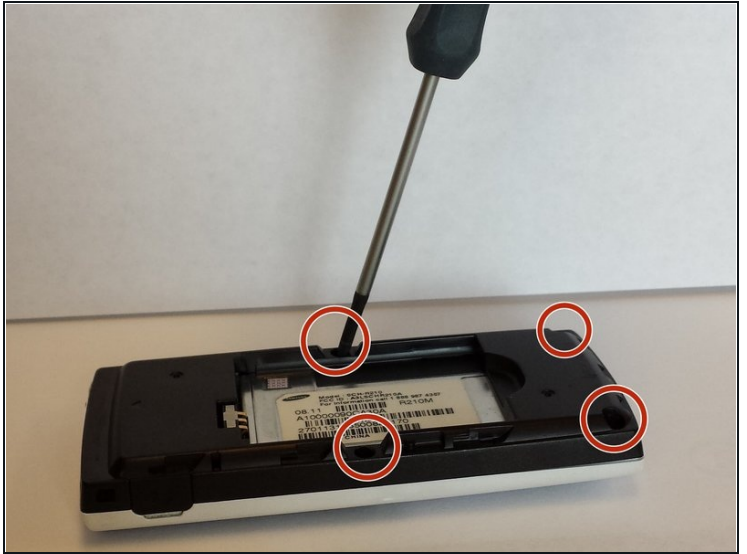
- Locate the access notch at the end of the battery compartment.

## Step 3



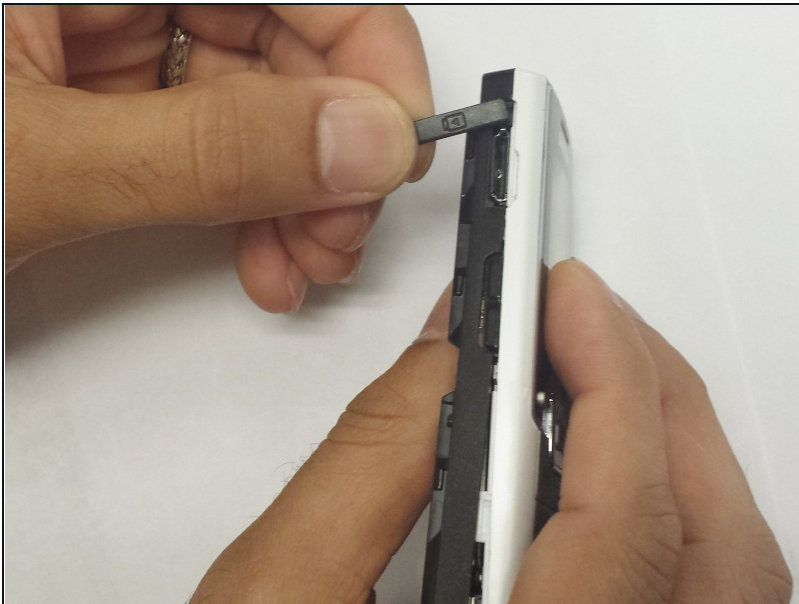
- Place your thumb on the edge of the battery near the access notch.
- Lift the battery to remove it from the phone. Set the battery aside.

## Step 4 — Keypad



- Remove the four 4.8 mm screws from the midframe using a Phillips #00 screwdriver.

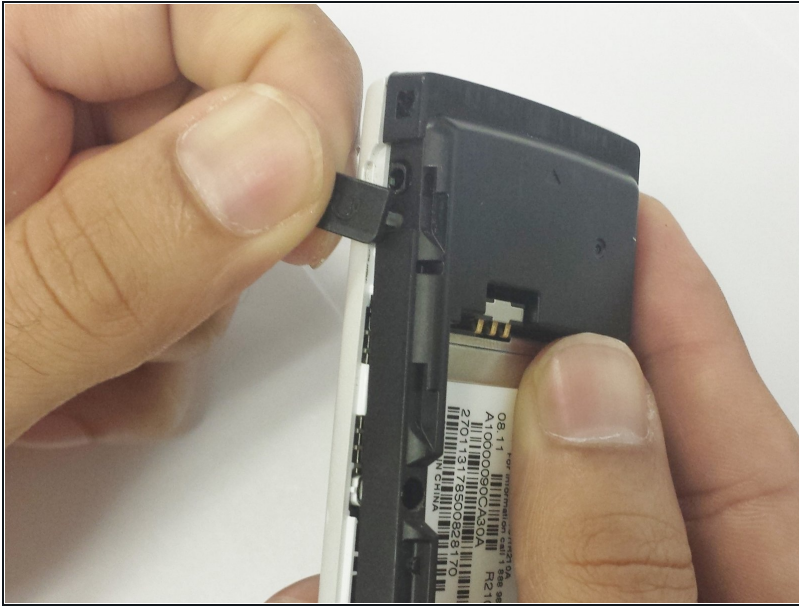
## Step 5



- Remove the headphone cover from the left side of the midframe.

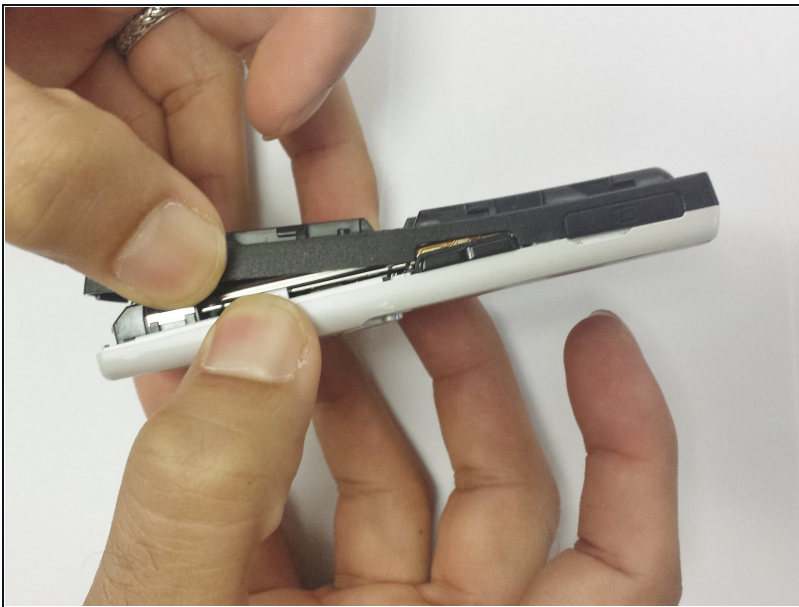


## Step 6



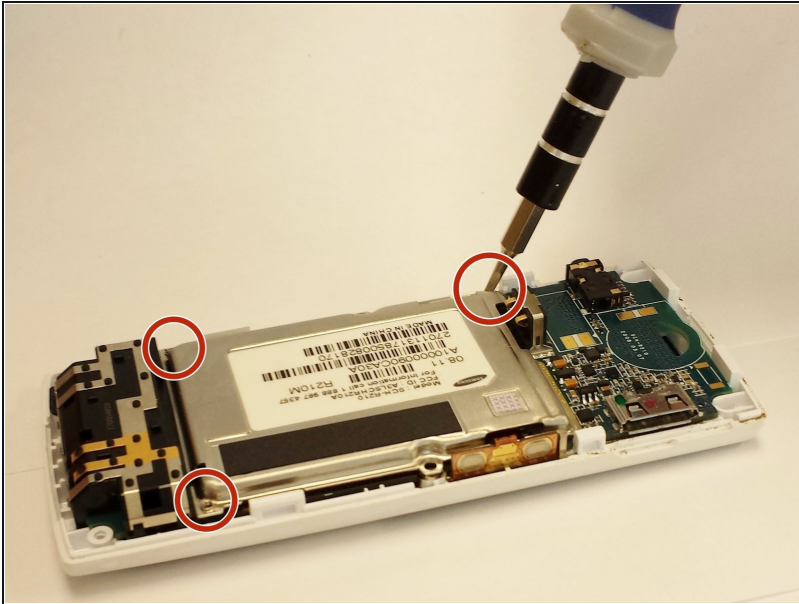
- Remove the volume cover from the right side of the midframe.

## Step 7



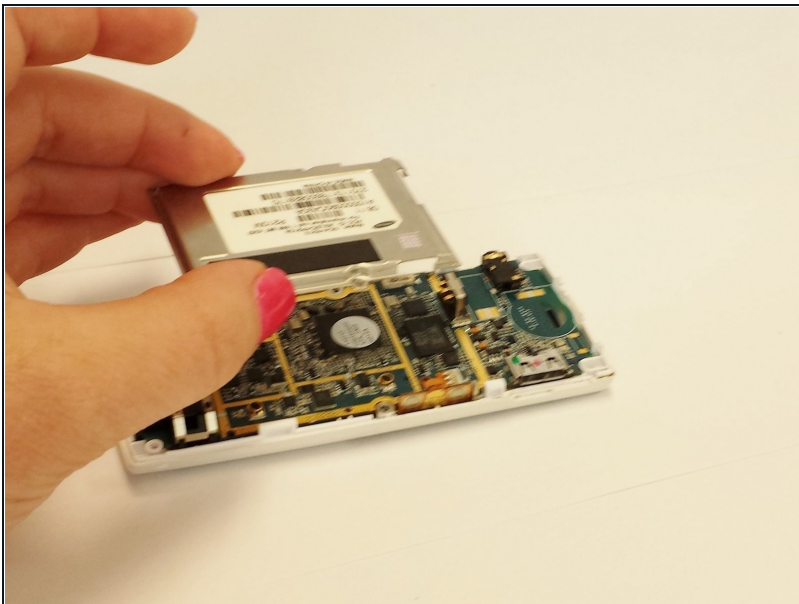
- Use your hands to separate the midframe from the rest of the phone.
- ① This may take a little effort to remove.

## Step 8



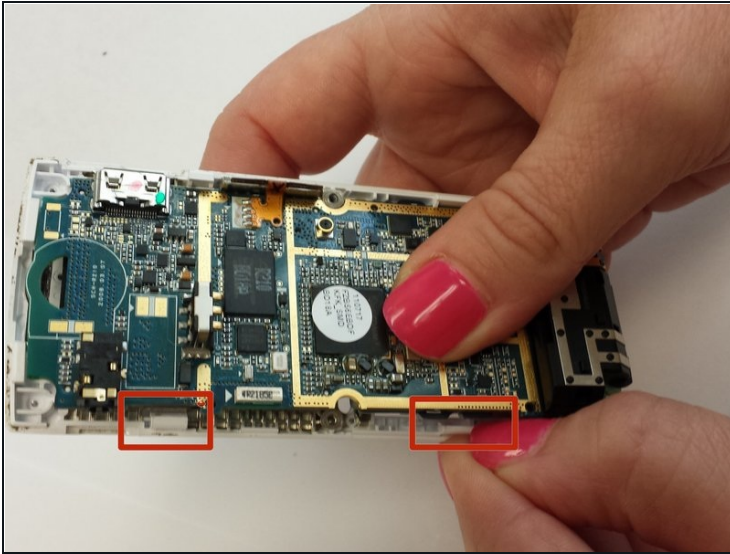
- Use a 1.5 mm hex screwdriver to remove the three 2.4 mm screws around the motherboard.

## Step 9



- Lift the metal plate off of the motherboard and set it aside.

## Step 10



- Push on the white plastic tabs and the keypad at the same time to remove the motherboard.

## Step 11



- Turn the phone over to its front side.
  - Apply pressure on the keypad.
- ⓘ The keypad will come out easily.

---

To reassemble your device, follow these instructions in reverse order.