



# Ricoh YF-20 Super Front Cover Replacement

This process involves removing the back cover...

Written By: Eric Dazet



# INTRODUCTION

This process involves removing the back cover and the front cover of the Ricoh YF-20 Super camera.

## TOOLS:

Phillips #1 Screwdriver (1)

### Step 1 — Front Cover



- Use the screwdriver to unscrew the indicated screws from the left, right, bottom, and back sides of the camera.

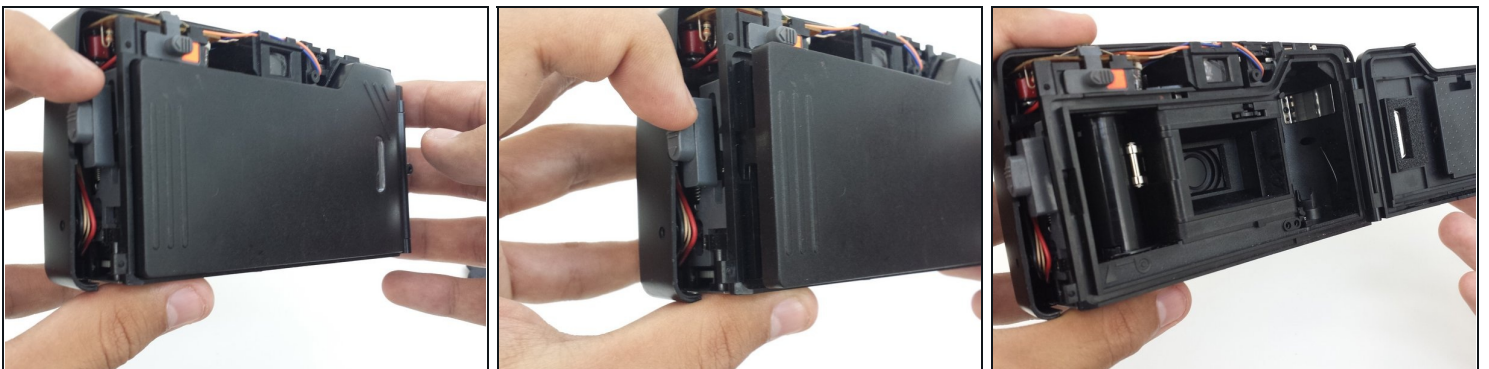
## Step 2



- Loosen the back cover from both the left and the right sides of the camera. Take off the back cover.

⚠ The lid of the battery compartment may fall off because it is not attached to anything.

## Step 3



- Open the film compartment.
- Press your finger on top of the grey latch on the left side of the camera.

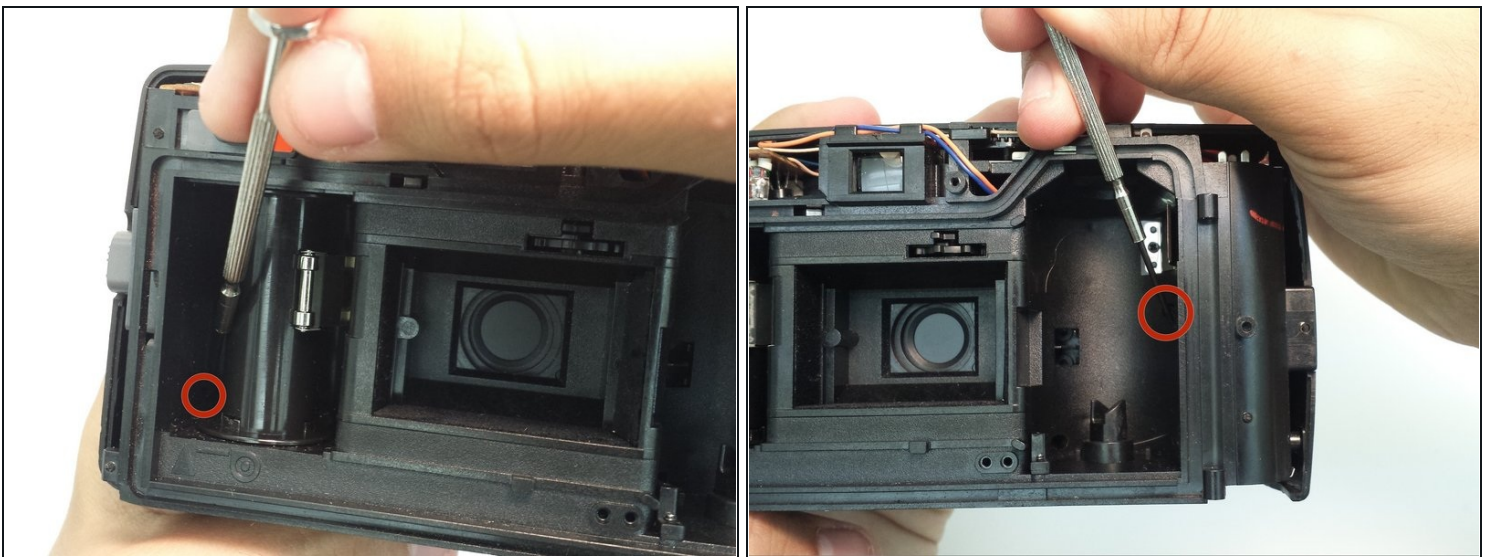


## Step 4



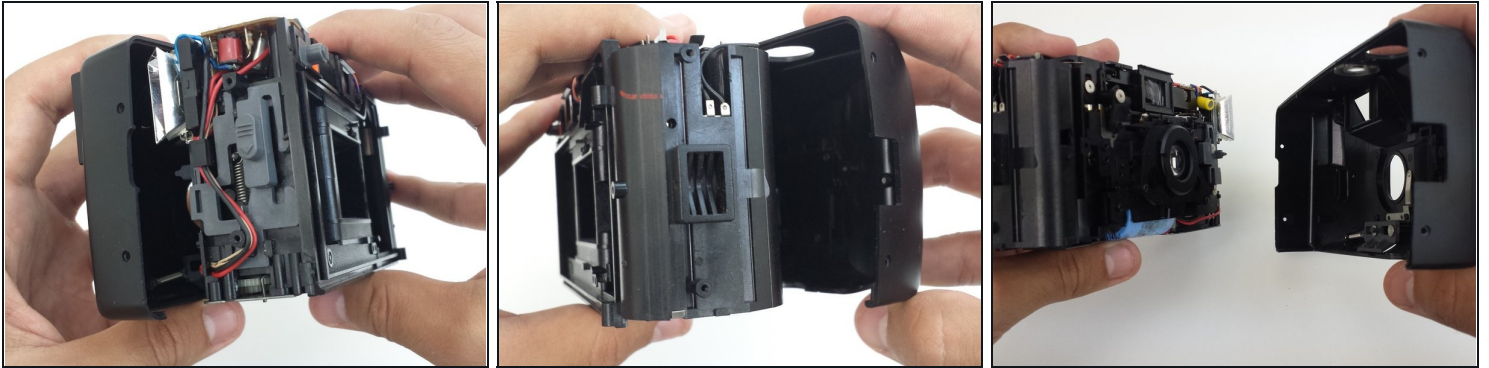
- ① Removing the film compartment door is optional. However, it may aid maneuverability in future steps.
- Use a thin object like a toothpick or a small screwdriver to push down on the metal pin holding the film compartment door in place.
  - Use your fingers to completely remove the metal pin.
  - Remove the film compartment door.

## Step 5



- Use a thin shaft screwdriver and unscrew the two indicated screws within the film compartment.

## Step 6



- Loosen the front cover from the left and right sides of the camera.
- Take off the front cover.

---

To reassemble your device, follow these instructions in reverse order.