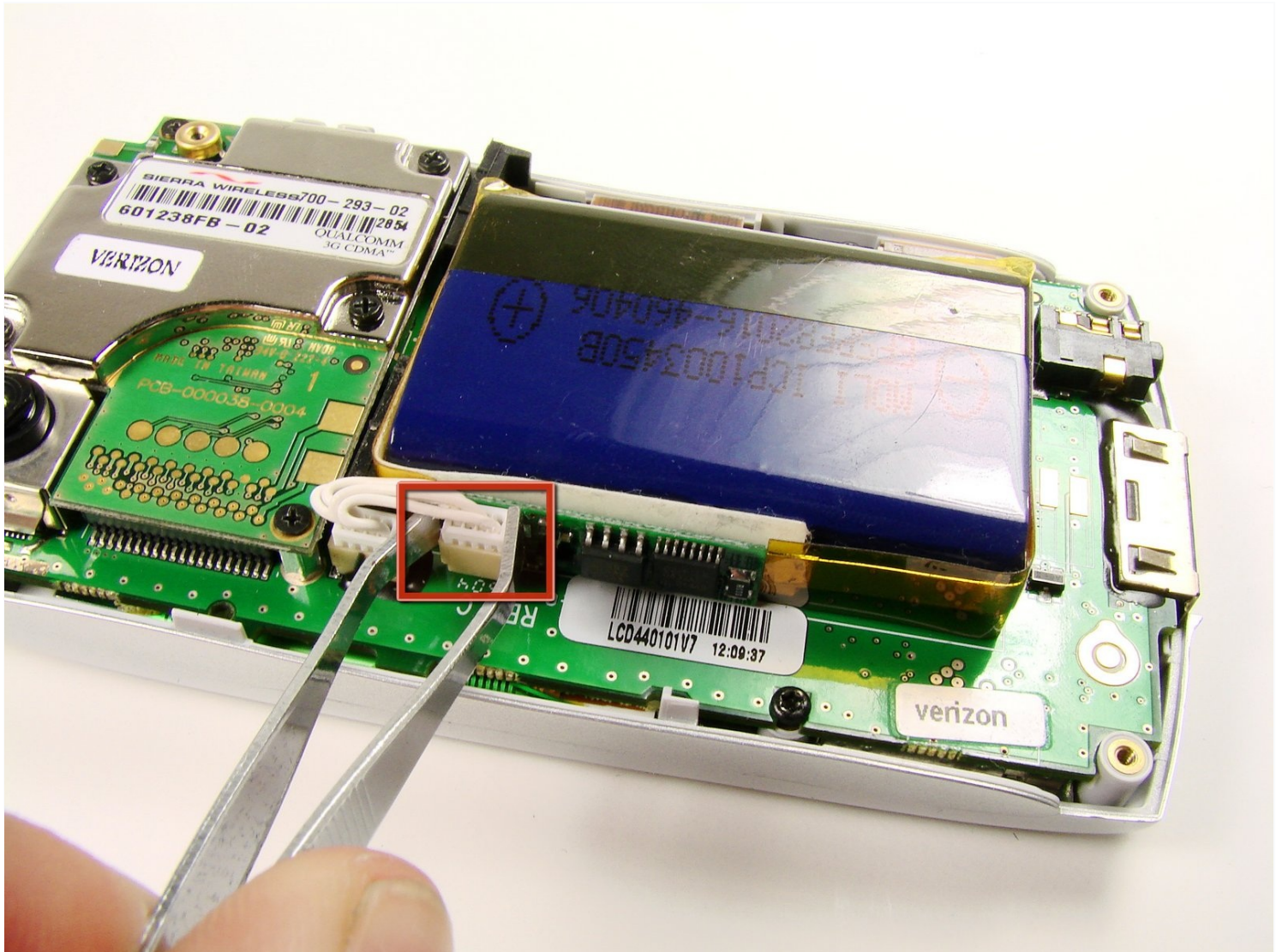




Palm Treo 600 Battery Replacement

Follow this guide if the battery is...

Written By: Clement Poisson



INTRODUCTION

Follow this guide if the battery is dysfunctional and you want to replace it.

TOOLS:

[Tweezers](#) (1)

[Spudger](#) (1)

[T6 Torx Screwdriver](#) (1)

Step 1 — Back Case



- On the back of the device, locate the 3 rubber plugs, and use a plastic spudger to remove them.

Step 2



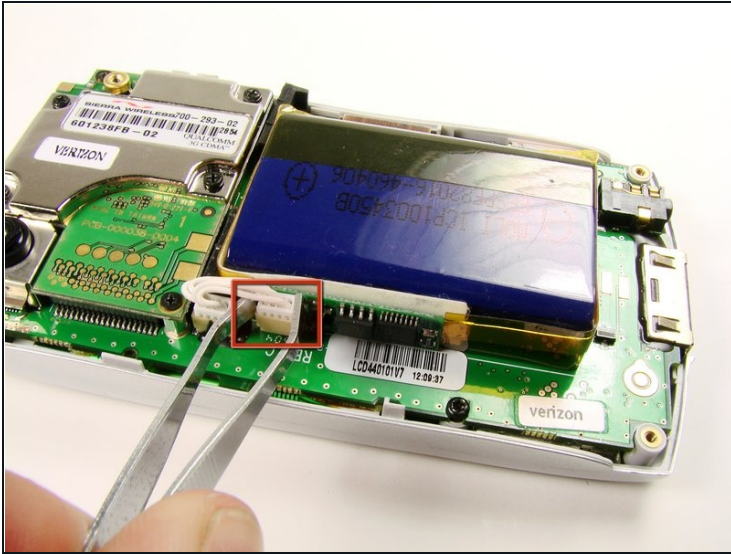
- Use the T6 Torx Screwdriver to remove all 4 screws.
- ① You have to first remove the Stylus to access the 4th screw.

Step 3



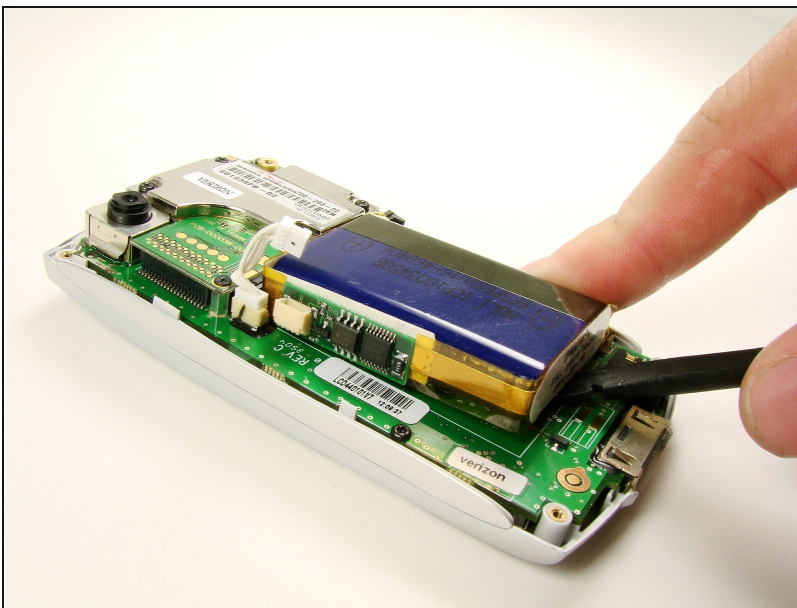
- Using a plastic opening tool, carefully separate the front and back cases.
- ① **Note:** The antenna will detach from the phone.

Step 4 — Battery



- Using metal [tweezers](#), unplug small white plug.
- ☑ Pulling the white plug will disconnect the battery. Make sure the phone is off before you do this step.

Step 5



- Slide the flat side of the spudger under the battery and gently dislodge the battery by lifting the spudger up.
- ⓘ The battery may be glued to the phone.

To reassemble your device, follow these instructions in reverse order.

