



Toshiba NB205 N330PK Keyboard Replacement

This guide outlines how to remove and replace the keyboard assembly (3 Steps).

Written By: Mason McCaskill

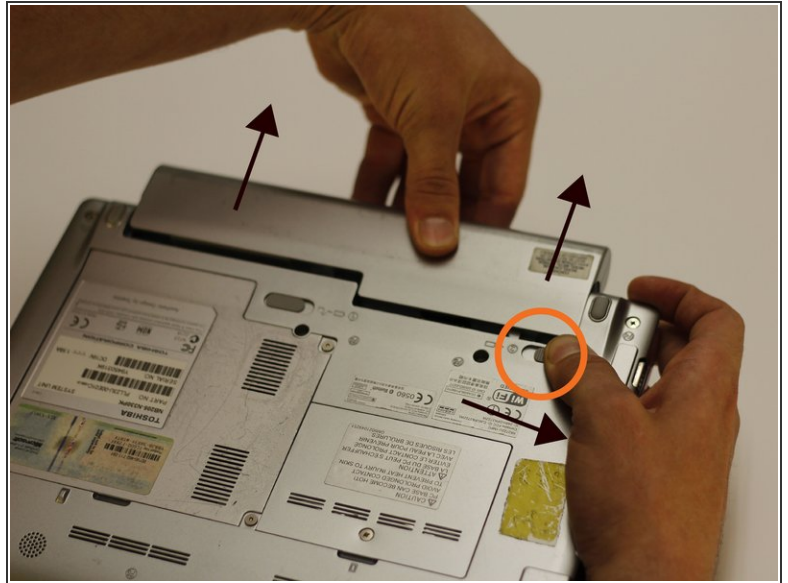




TOOLS:

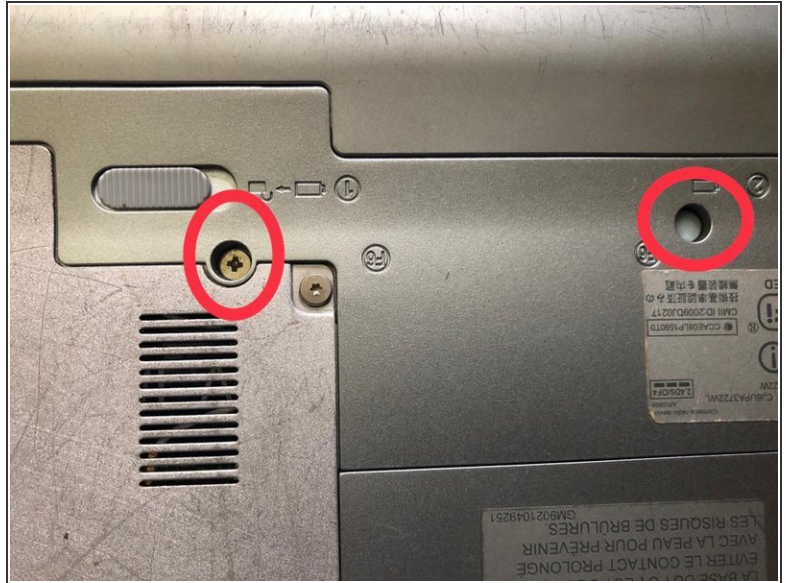
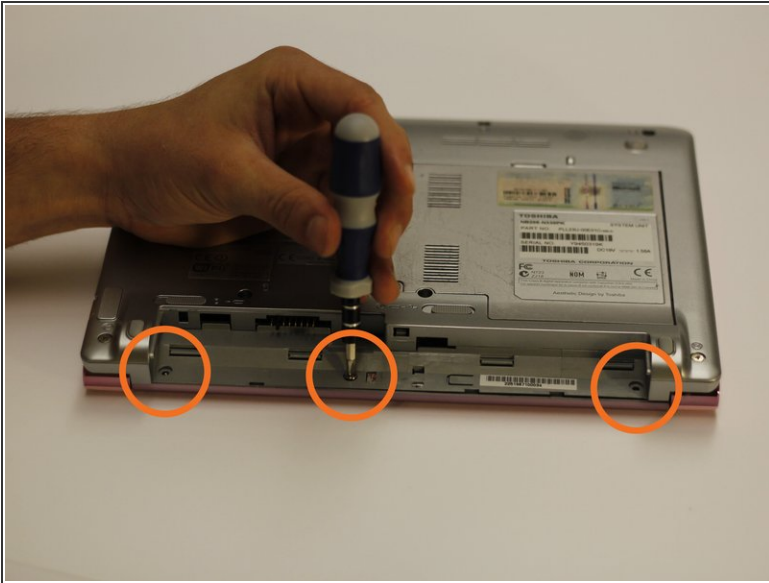
- [Spudger](#) (1)
-

Step 1 — Power Button



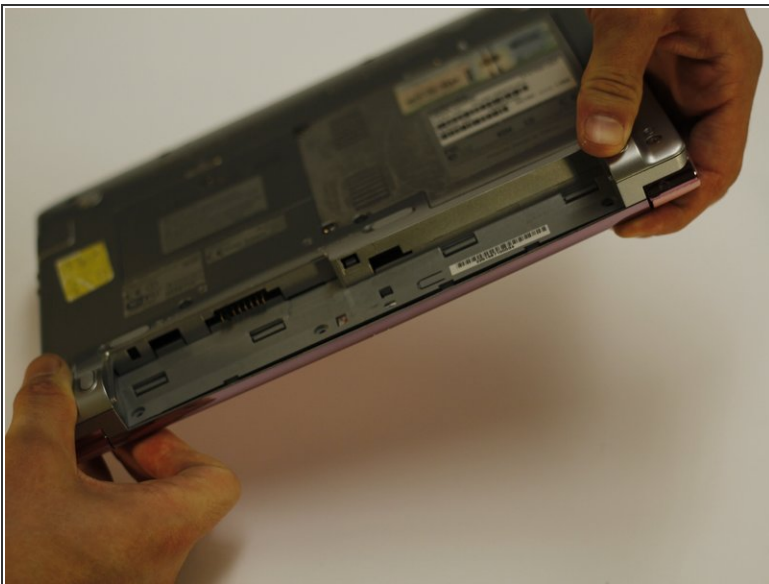
- Start by first removing the battery.
- Move the first release switch to the right position.
- Move the second release switch to the right position while pulling the battery towards the top of the netbook.

Step 2



- Using the bit driver and a Phillips #0 bit, remove the three circled screws, 5 mm in length.
- Using the bit driver and a Phillips #0 Bit, remove the two circled screws labelled F6. (These hold the keyboard) one screw may be under a rubber stopper

Step 3



- While holding the top of the netbook, flip the netbook over.

Step 4



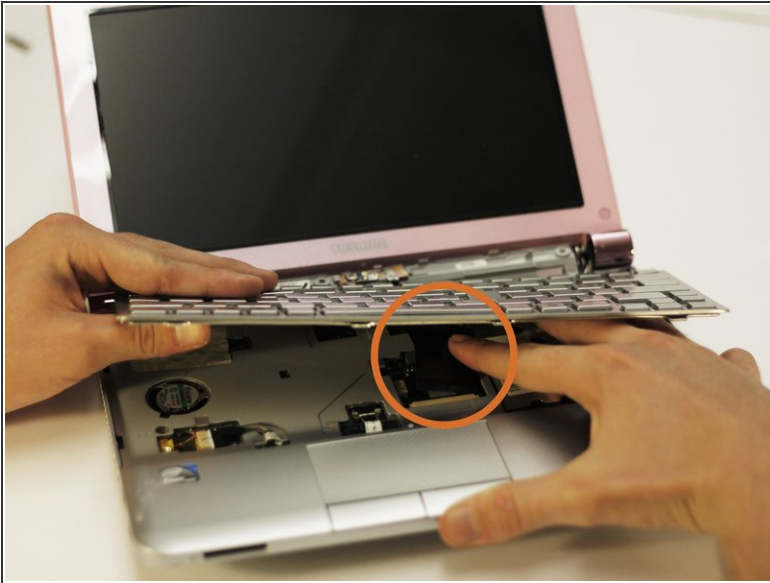
- Carefully lift off the power bar assembly for access to the button and receiver.

Step 5 — Keyboard



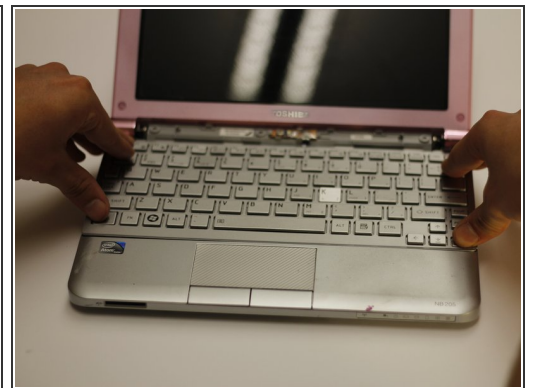
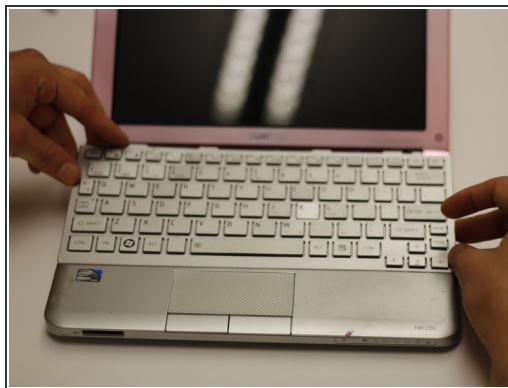
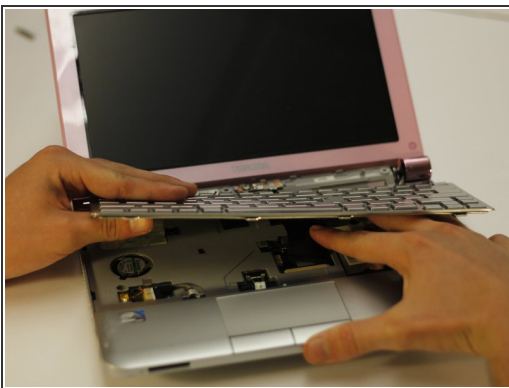
- Use the spudger to gently pry around the keyboard. This will release the keyboard assembly from the body.

Step 6



- Reach under the keyboard and disconnect the electrical connection.
- Lift the broken keyboard off.

Step 7



- Reattach the new electrical connection into the old connection location.
- Place the keyboard into the original location starting with the bottom first.
- Gently press the keyboard down to secure it into its original location.