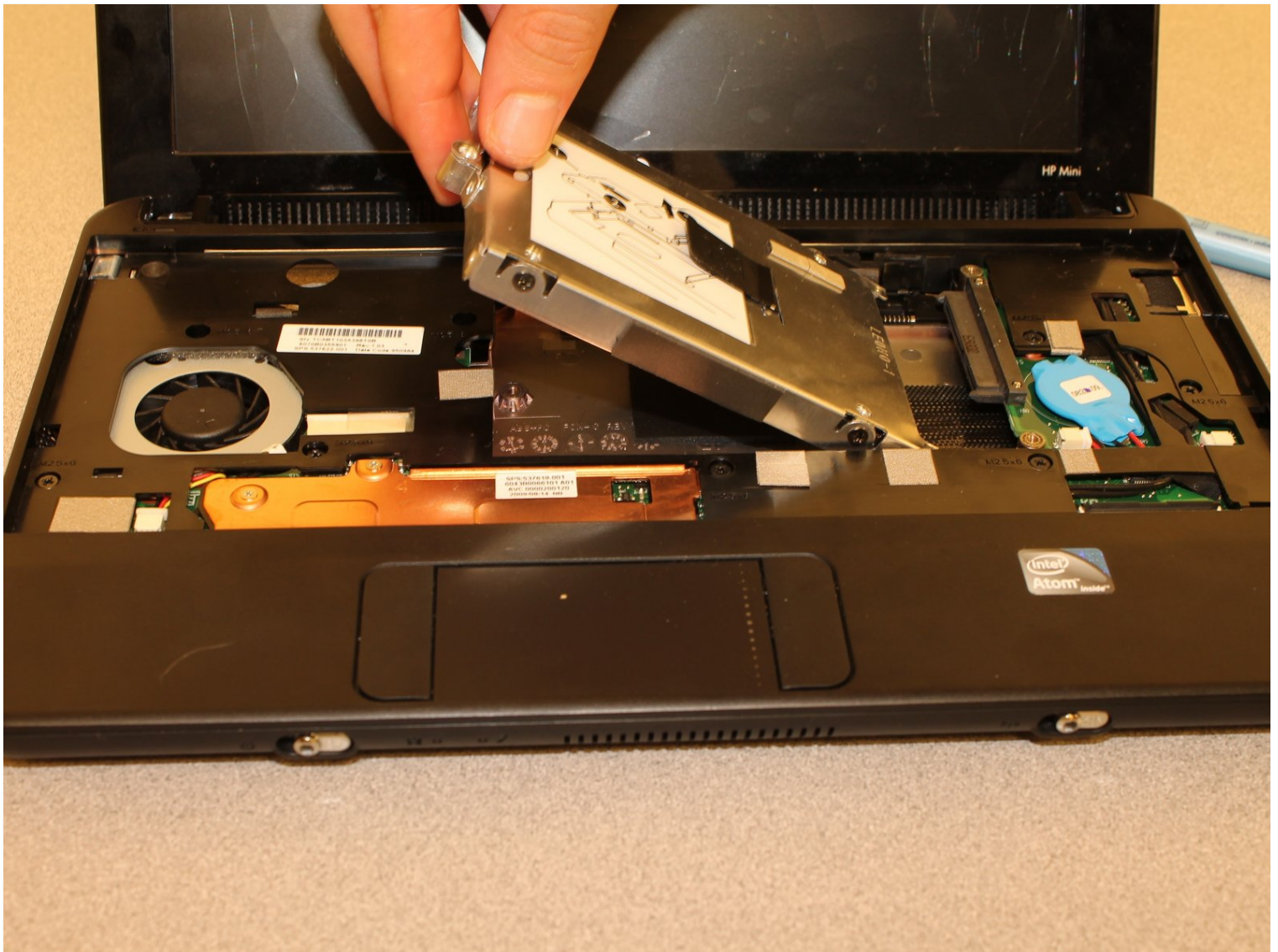




# HP Mini 110-1046NR Hard Drive Replacement

The HP Mini 110 comes stock with a 160GB hard...

Written By: Amos Hine



# INTRODUCTION

The HP Mini 110 comes stock with a 160GB hard disk drive. Whether it needs replacement due to failure, or it is desired to upgrade it to a larger size or replace it with a solid state drive, this guide is applicable.

## TOOLS:

Phillips #00 Screwdriver (1)  
Phillips #0 Screwdriver (1)  
Phillips #1 Screwdriver (1)  
Spudger (1)

## PARTS:

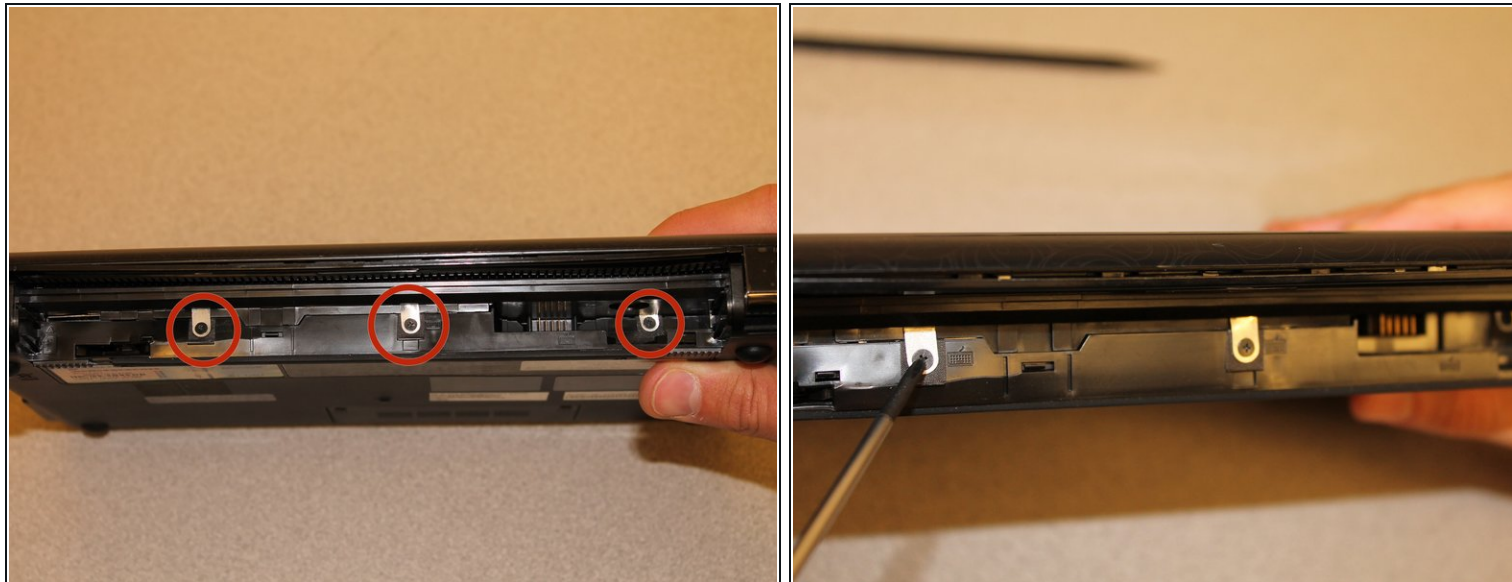
Crucial MX500 250 GB SSD (1)  
Crucial MX500 500 GB SSD (1)  
Crucial MX500 1 TB SSD (1)

## Step 1 — Battery



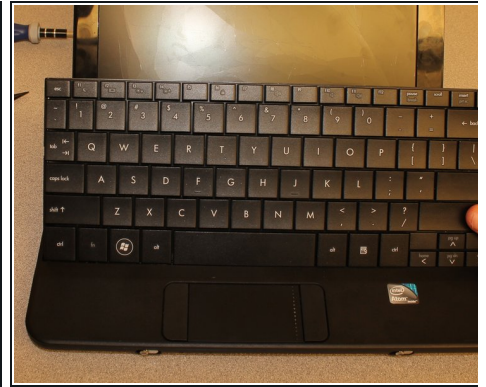
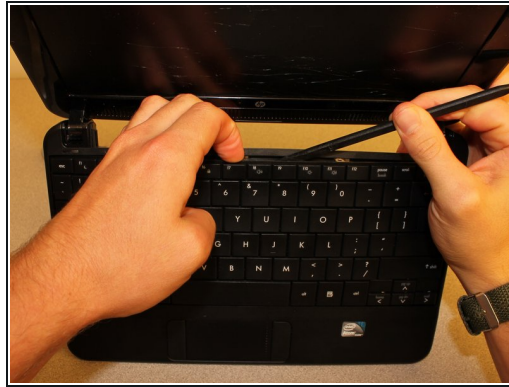
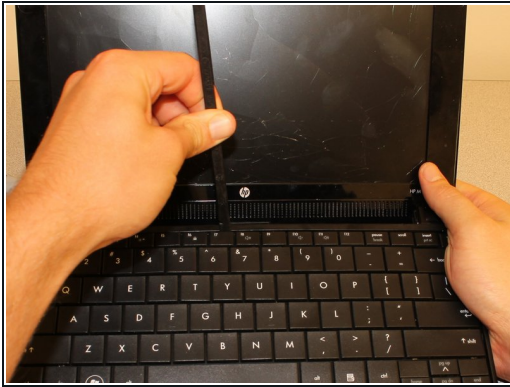
- Power-off the netbook fully before attempting to remove the battery.
- Flip your netbook upside down, and locate the sliding tabs near the battery.
- Slide both tabs inward so that the battery visibly moves away from the case of the computer.
- Release the tabs and pull the battery out.

## Step 2 — Keyboard



- With the screen closed, turn your netbook around so that the battery slot is facing you.
- Remove the three 2.9mm screws in the battery slot.
  - This step can be made easier by using a magnetic screwdriver.

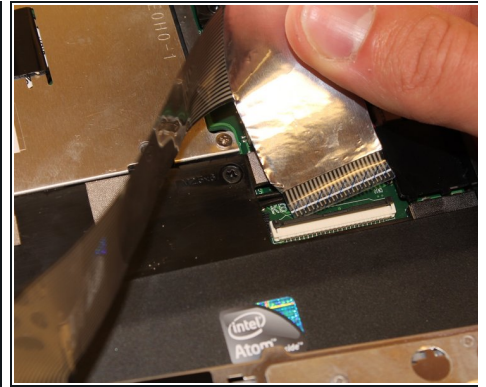
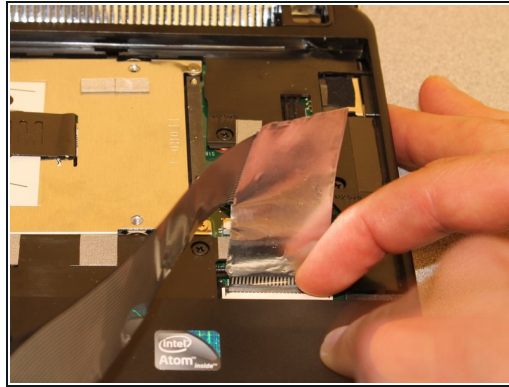
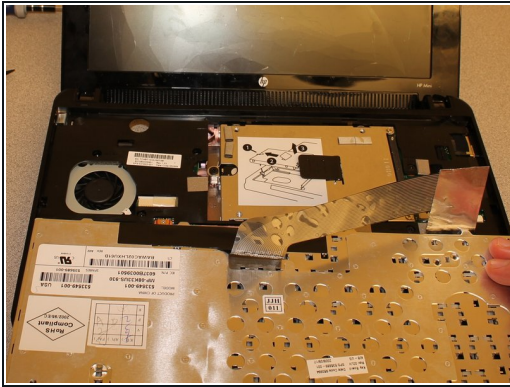
## Step 3



- Flip the netbook upright, and open the screen as far as it will go.
  - Pry up the keyboard from the middle of the top edge.
    - Insert the flat end of the spudger between middle of the the top edge of the keyboard and the plastic frame behind it.
    - Pry the keyboard up until it pops out or until you can grab it with your fingers, and then pull gently until it pops out on both sides.
- ⚠ Do not pull the keyboard out immediately - there is a potentially fragile ribbon cable that attaches to the motherboard behind the keyboard.

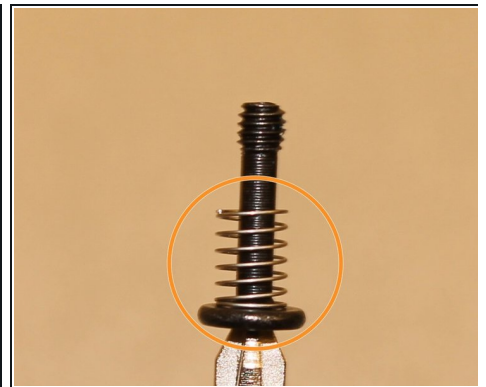
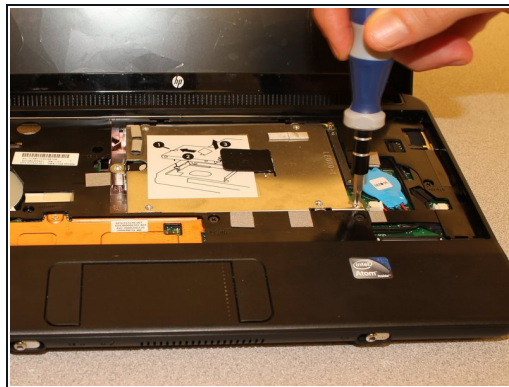
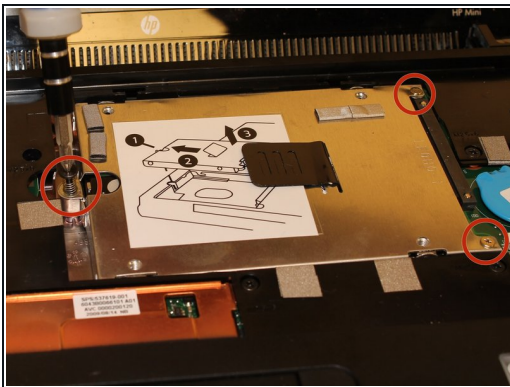


## Step 4



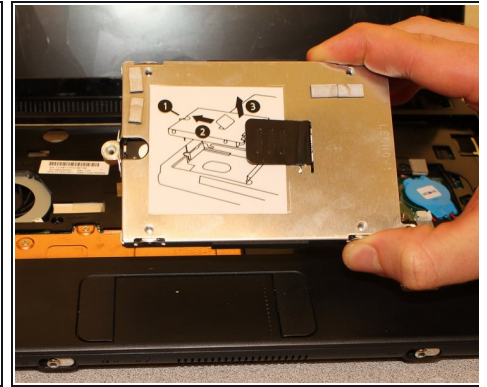
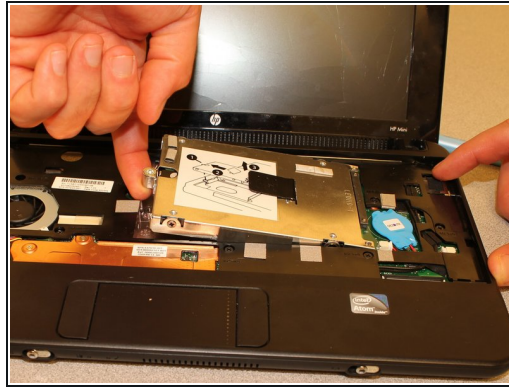
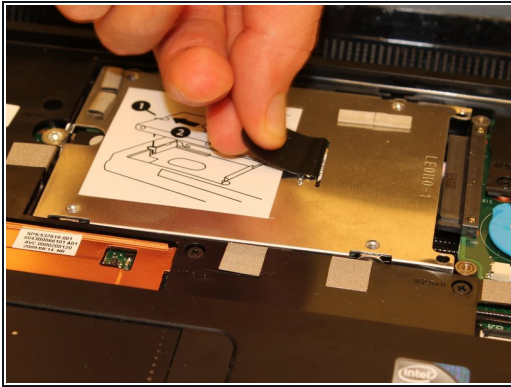
- Flip the keyboard over (toward you) by pivoting it about the lower edge, and lay it upside down on top of the touchpad area to reveal the ribbon cable.
- Lightly pull up on the black tab on top of the keyboard ribbon cable until it hinges toward you and releases the ribbon cable end.
- Pull the ribbon cable backward and out of the receptacle. This should not require any effort.

## Step 5 — Hard Drive



- Remove the three screws holding down the hard drive. Use a Phillips PH0 screwdriver for the two silver, 3.4mm screws on the right, and use a PH1 for the black, 10.3mm screw on the left.
- It is not necessary to fully remove the 10.3mm screw, but if you do, be careful to not lose the spring.

## Step 6



- As shown on the top face of the hard drive itself, pull hard drive left using the black tab until the hard drive is unplugged and entirely released from its receptacle.
- Lift the hard drive out of the laptop.
- Place the hard drive in an anti-static bag to reduce the likelihood of damaging it with static electricity.

To install a new hard drive or re-install the old one, follow these instructions in reverse order.