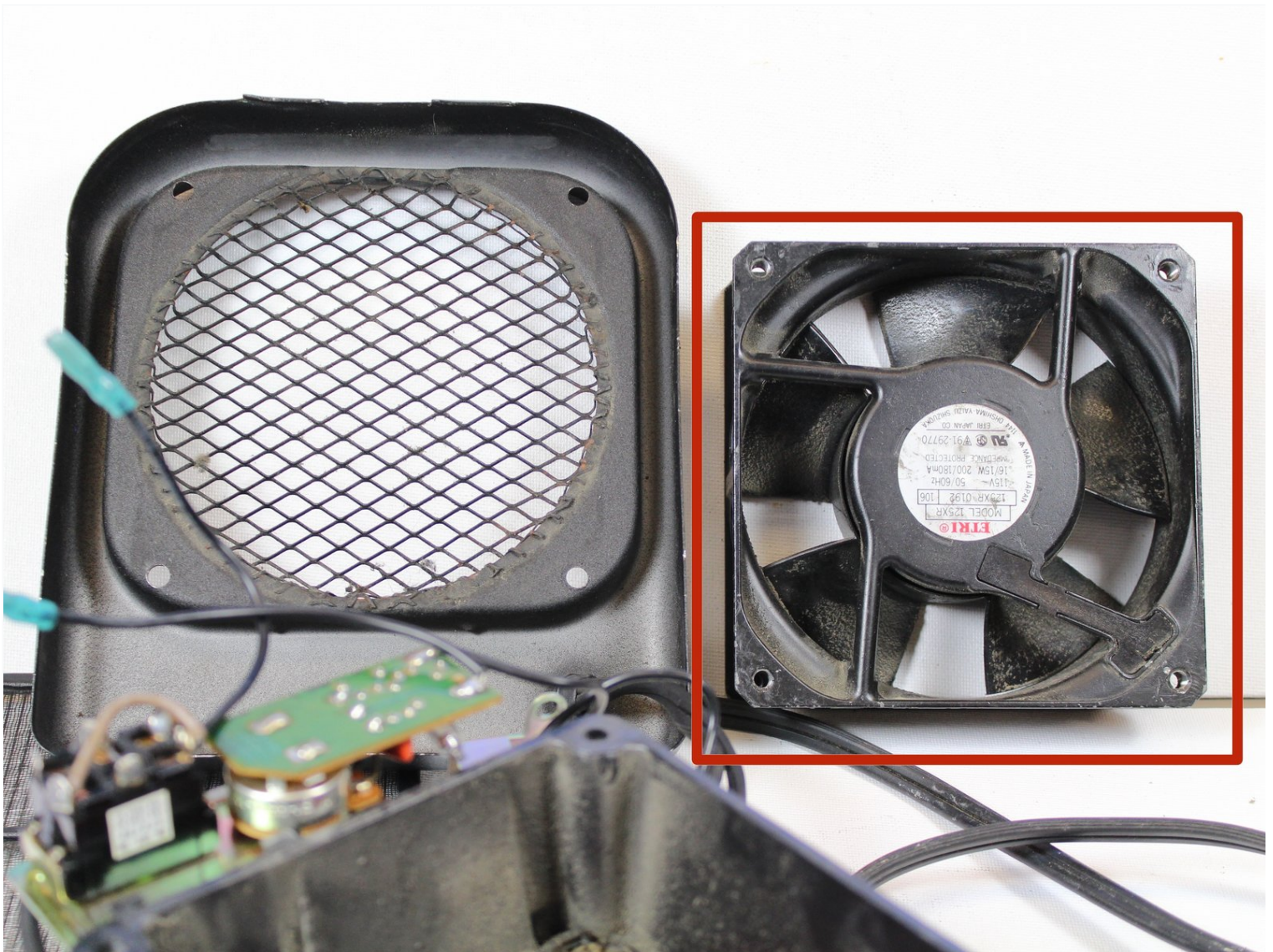


Royal Heat RS-100 Fan Replacement

Replace the fan if the fan is not working. The...

Written By: Danyeale Rampone



INTRODUCTION

Replace the fan if the fan is not working. The heater will still work if the fan is broken but it will not allow the device to circulate air.

TOOLS:

Phillips #2 Screwdriver (1)

1/4" Flathead Screwdriver (1)

Adjustable Wrench (1)

Step 1 — Panel



 **Unplug the power cord.**

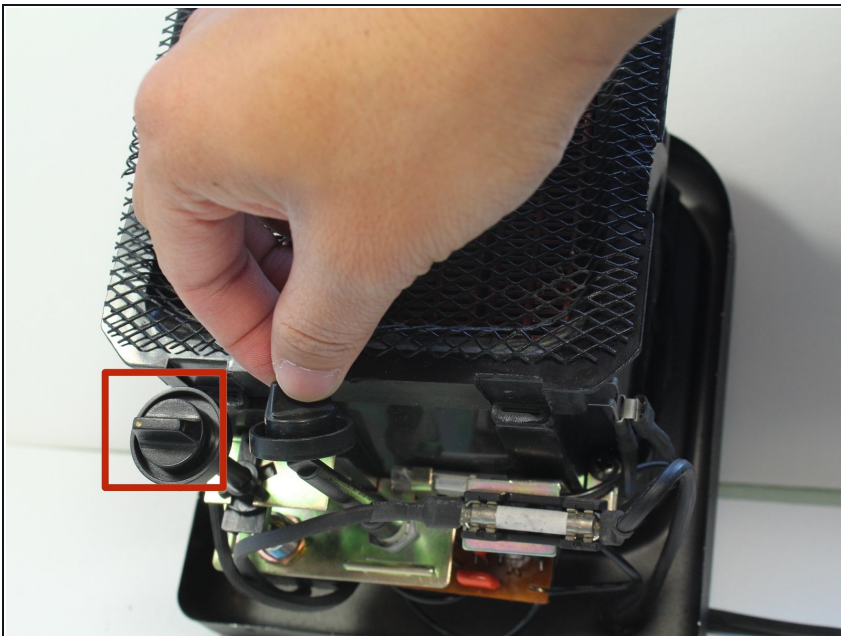
- Flip the device over so the bottom is facing up.
- Remove the two 10mm screws holding the back panel using a Phillips #2 screwdriver.

Step 2



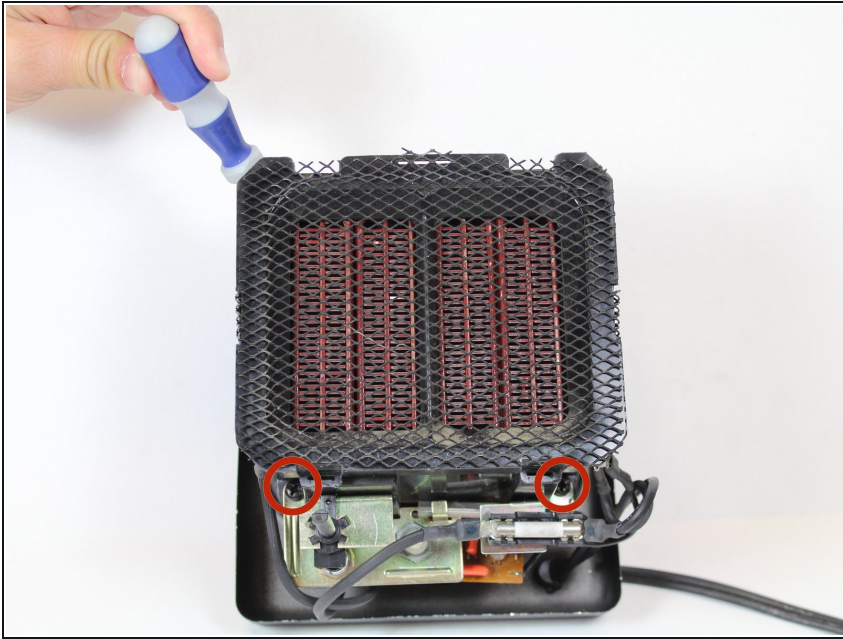
- Place the Flathead Screw driver parallel with the gap between the back and the heater body, then twist until the two parts of panel are separated. You may have to do this on four sides of the panel.
- Remove the front panel by pulling them apart. The front panel should come out easily.

Step 3



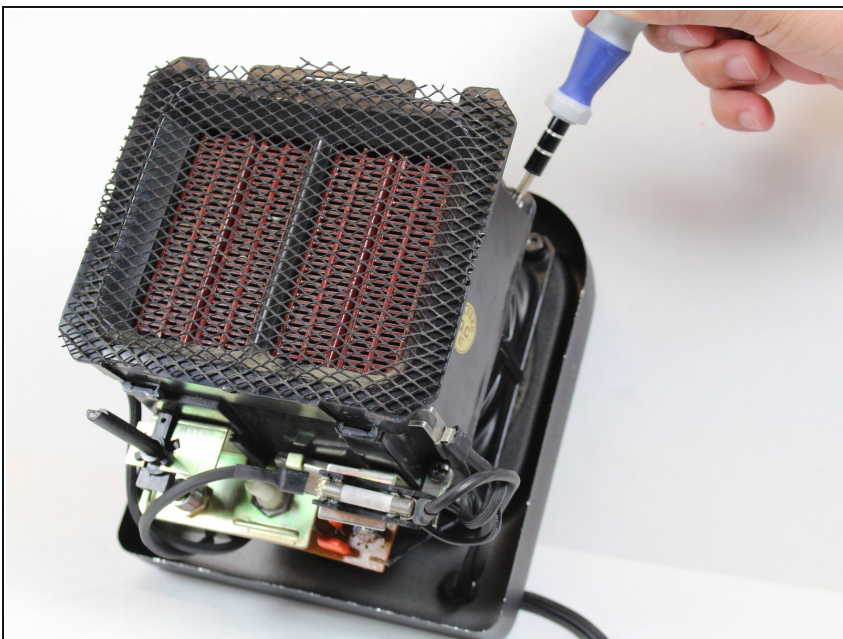
- Remove the two dial caps from the two switches by lifting them up.

Step 4 — Fan



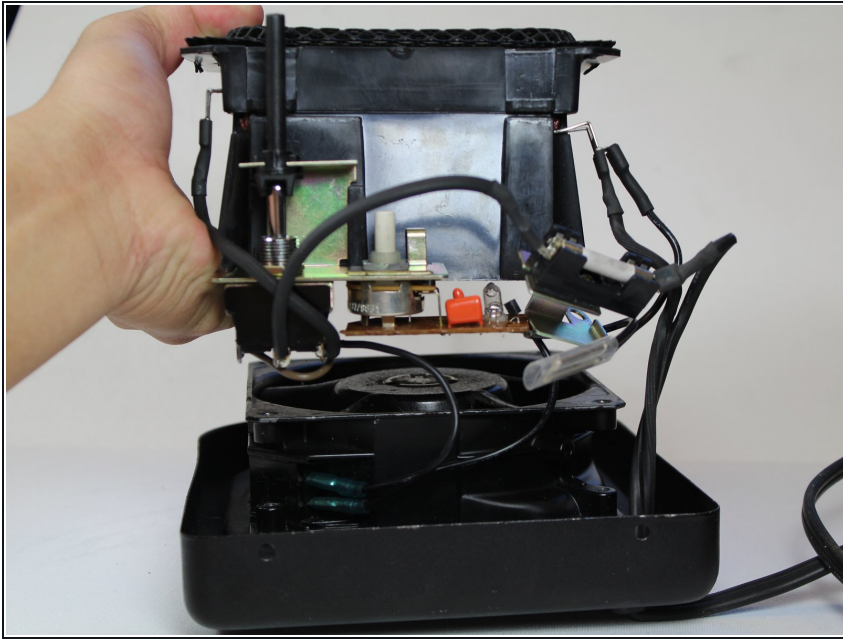
- Remove the three 10 mm screws that attach the fan to the heating coil assembly using the #2 Phillip Screwdriver.

Step 5



- Remove the 10 mm screw that attaches the fan to the heating coil assembly using the #2 Phillip Screwdriver.

Step 6



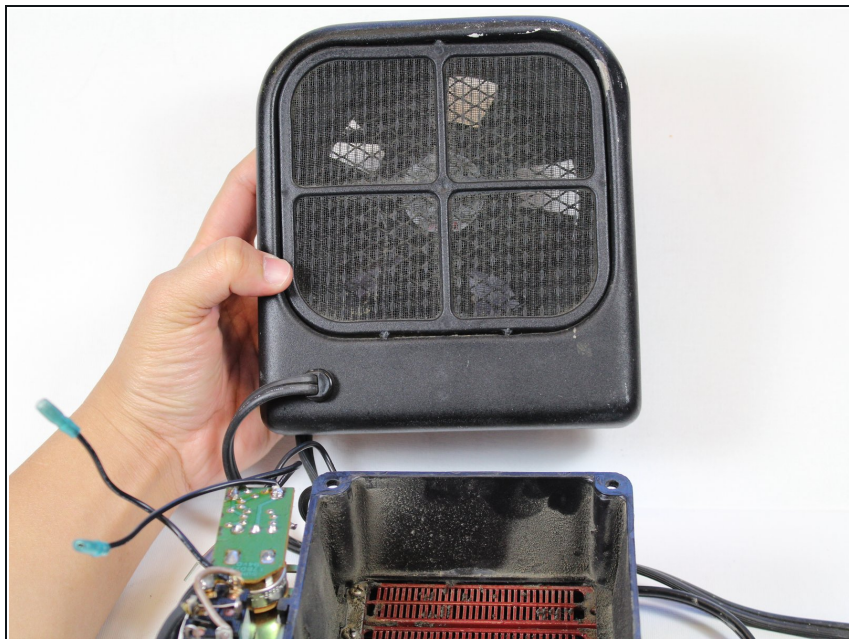
- Lift the heating coil assembly from the fan.

Step 7



- Unplug the two blue wires that connect the fan to the Power/Fan Switch Circuit Board Assembly by pulling them away from the fan.

Step 8



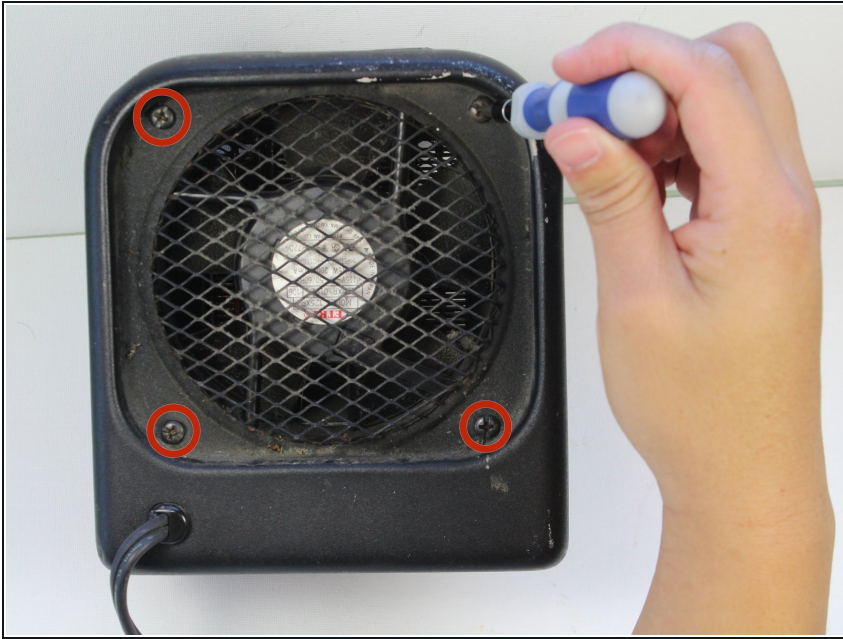
- Flip the device over so the back panel is facing upwards.

Step 9



- Gently pry the back screen off of the device using a flathead screwdriver and remove it.

Step 10



- Remove the four 10mm screws that attach the fan to the heater case using the #2 Phillip Screwdriver.
- Lift the back plate from the fan by pulling it away from the fan.
- ⓘ Take note the direction of the fan blades. Putting the the fan in the wrong way will result in the air flow to come out the back of the device instead of the front.

To reassemble your device, follow these instructions in reverse order.