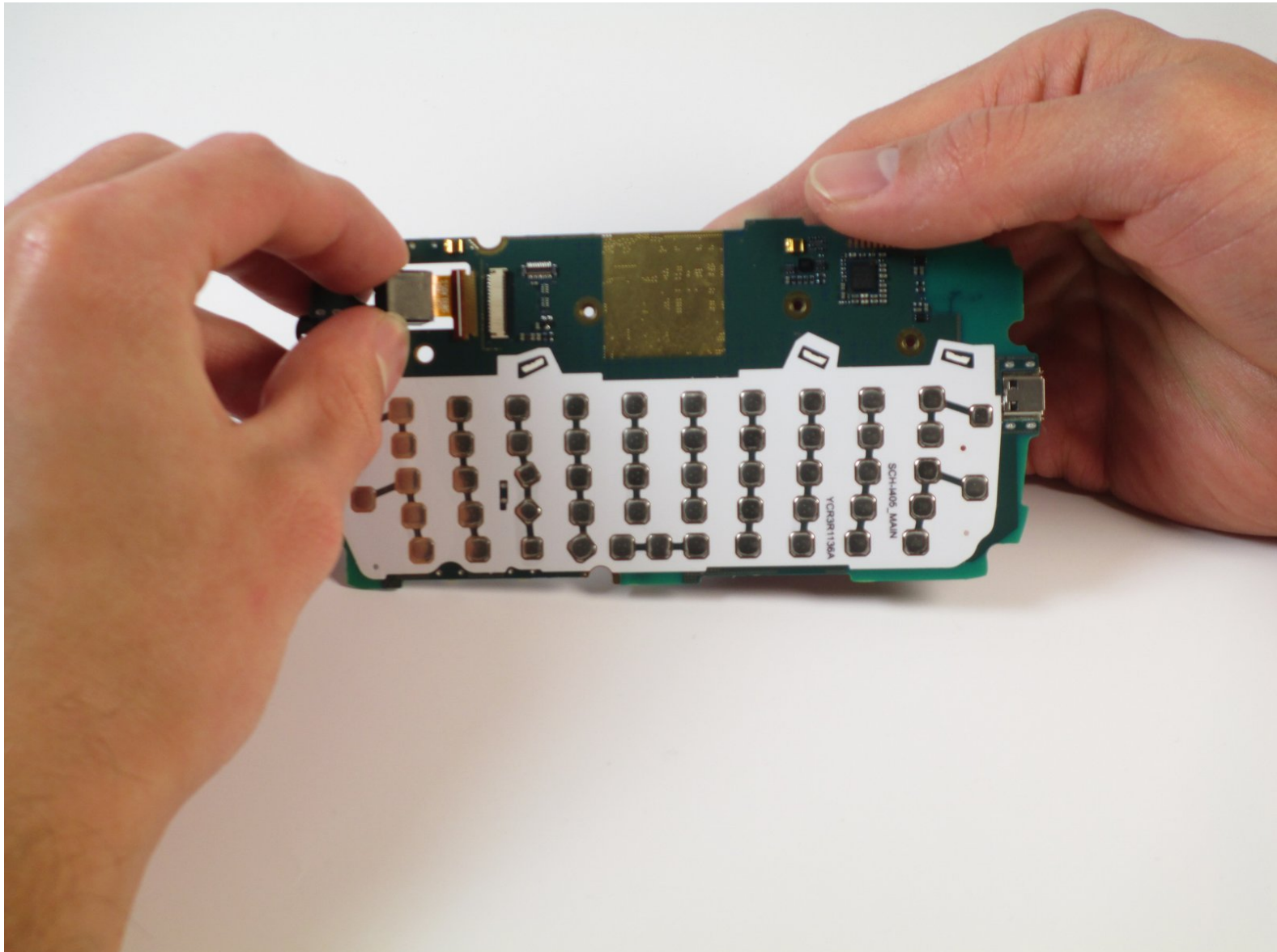




# Samsung Stratosphere Rear Camera Replacement

Replace the rear camera on your Samsung Stratosphere and get back to taking pictures.

Written By: Ryan



---

## INTRODUCTION

The rear camera is on the back of the phone and faces away from the screen. This is the highest quality camera on the phone and easiest to damage.

---

### TOOLS:

- [Phillips #000 Screwdriver](#) (1)
  - [iFixit Opening Tools](#) (1)
  - [Tweezers](#) (1)
-

## Step 1 — Battery



- Using your fingers, pry along the groove at the top of the phone.
- Pull back on the rear casing until it comes free from the device.
- The casing will make a cracking sound as it is removed.

## Step 2



- With your fingers, pry from the bottom of the battery to loosen it.
- Lift away to remove the battery from the phone.

## Step 3 — Motherboard



- Locate the red and white sim card located above the battery housing.
- Remove the sim card by sliding it downwards from its slot with your fingers.

## Step 4



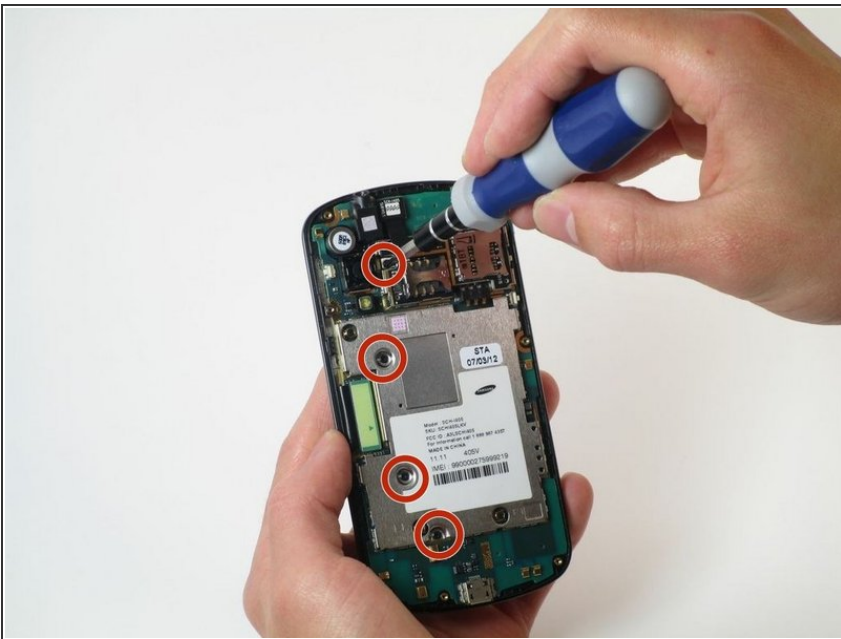
- Remove the seven silver 3mm screws securing the rear panel using the Phillips #000 screwdriver.
- ⓘ Once loosened, some screws may get stuck in the casing. Use tweezers to remove them.

## Step 5



- Pry around the rear panel with a plastic opening tool to loosen it.
  - ⚠ Prying too deeply may damage delicate components inside the phone.
- Remove the rear panel from the phone with your fingers.

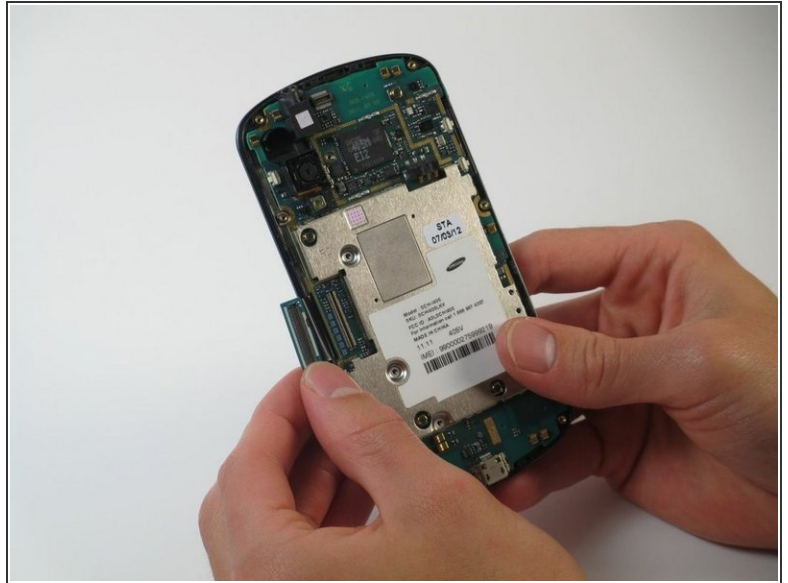
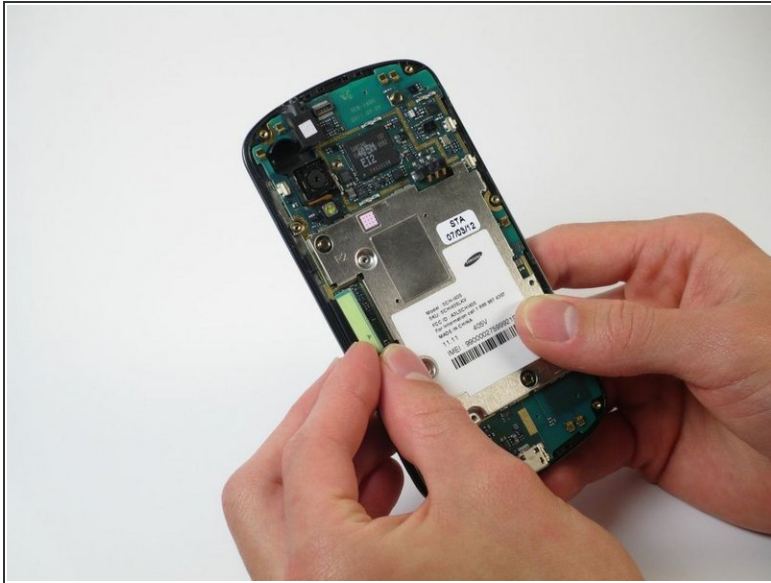
## Step 6



- Remove the four black 3mm screws securing the motherboard with the Phillips #000 screwdriver.



## Step 7



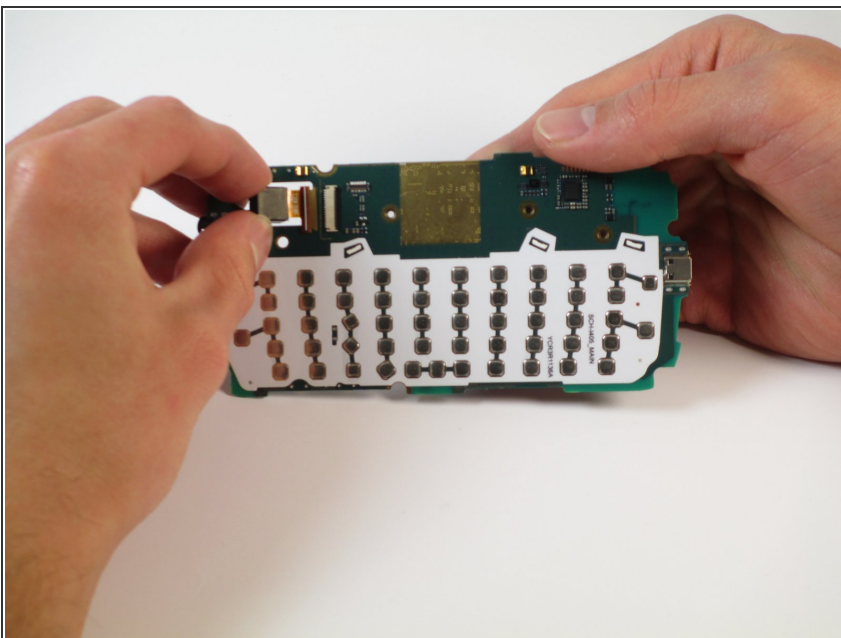
- Locate the flex cable attachment at the tab with a green arrow printed on top.
- Pry from the side the arrow is pointing with your fingers.
  - The cable will audibly snap as it is removed from its attachment.
- Let the cable hang loosely to the side of the phone.

## Step 8



- Pull the motherboard up from the side opposite the loose flex cable.
- *i* If necessary, use a plastic opening tool to separate the motherboard from the key pad underneath.
- Lift to remove the motherboard from the device.

## Step 9 — Rear Camera



- Gently pull the camera to the left while keeping it as close to the motherboard as possible.
- The metal foil connector attached to the camera should slide out of the motherboard.

To reassemble your device, follow these instructions in reverse order.