



# Sony Ericsson Xperia X10 Screen Replacement

This guide will show you how to replace the glass on the front of the Sony Ericsson Xperia X10.

Written By: Matt



---

## INTRODUCTION

This guide is going to show you how to replace a cracked or scratched glass screen. This guide only shows how to replace the glass, not the LCD screen.

---

### TOOLS:

- [iFixit Opening Tools](#) (1)
  - [T6 Torx Screwdriver](#) (1)
  - [Flathead Screwdriver](#) (1)
-

## Step 1 — Glass Screen



- Remove the back cover and the battery.

## Step 2



- Remove the eight 5mm T6 screws from the back of the phone.

## Step 3



- Use a case opening tool to release clips holding the case together.
- ❗ It's easier to start at the bottom right side of the phone. Insert the tool and run it down the side of the phone, using a prying motion to pull it apart.

## Step 4



- Take the part on the left side and put it out of the way.

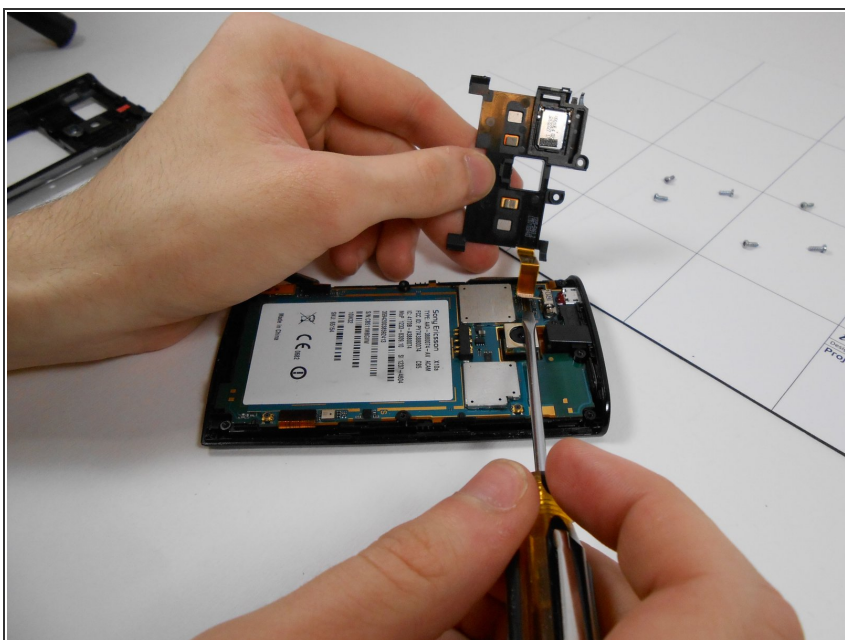


## Step 5



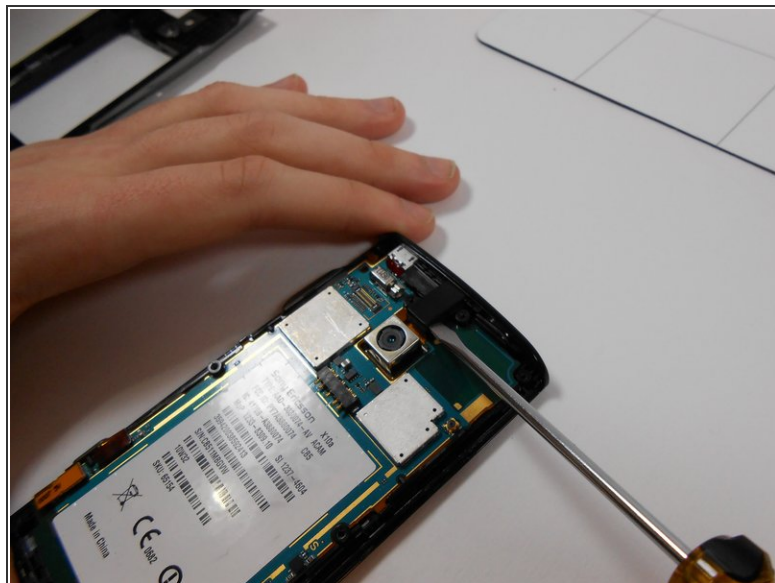
- Insert a flat head screw driver under the two clips and pry up.
- ❗ The chip should come loose with just a ribbon cable holding it to the rest of the phone.

## Step 6



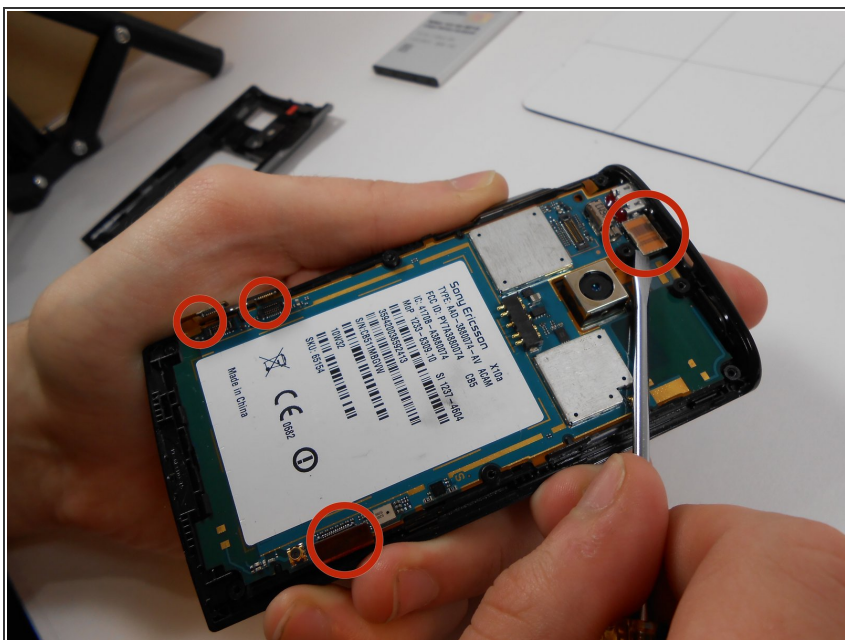
- Using a flat head screwdriver, flip the chip to the left and remove the ribbon cable.

## Step 7



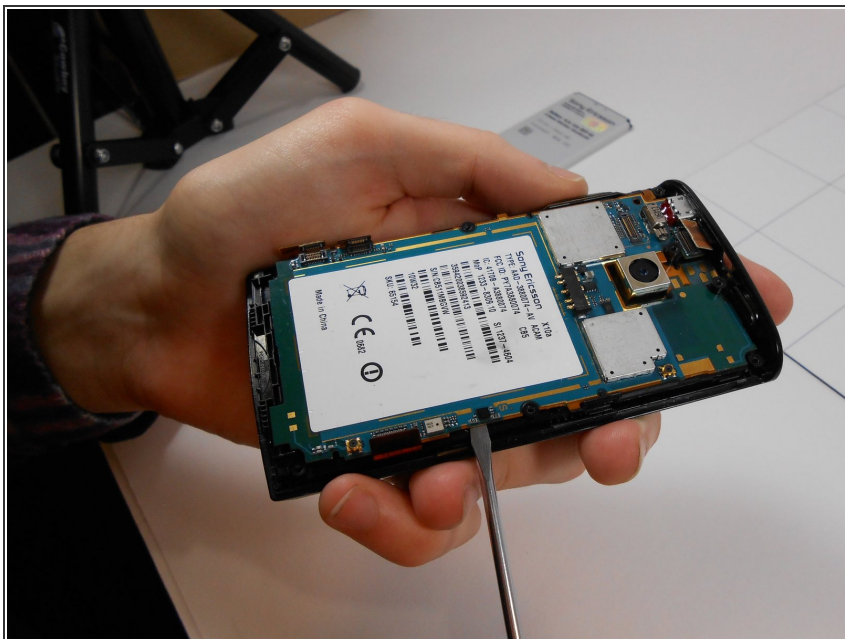
- Remove the volume and camera buttons. Using your fingers or a screwdriver, pull off the black plastic piece on the very top of the phone.

## Step 8



- Using a flat head screw driver, undo the ribbon cables connected to the phone.

## Step 9



- Gently insert a flat head screw driver under the logic board and pry to remove it from the phone casing.

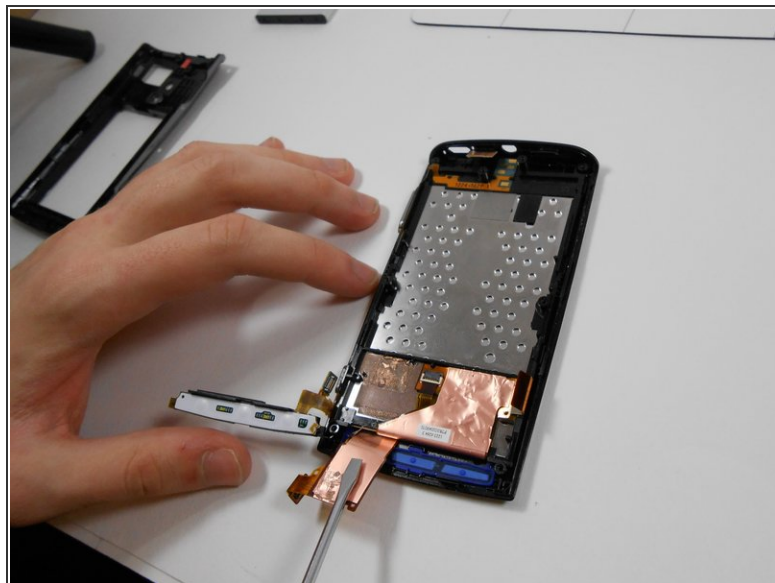
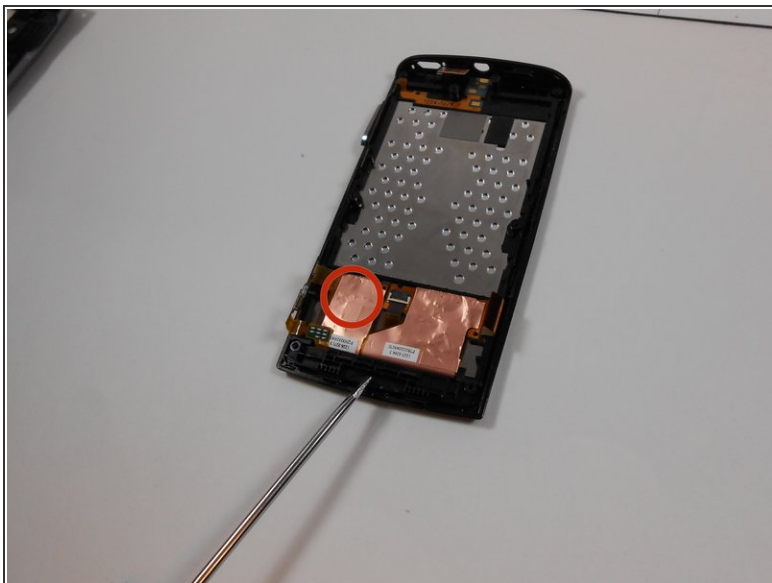
## Step 10



- Remove the logic board and put it to the side.

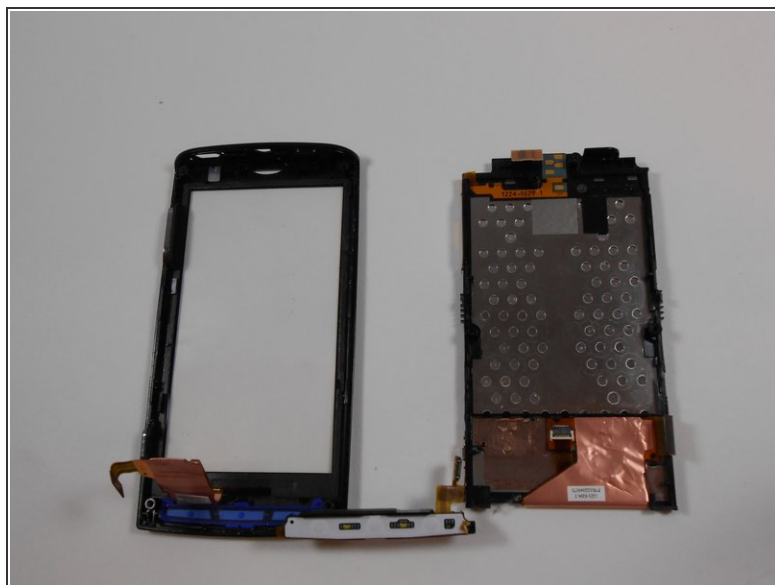
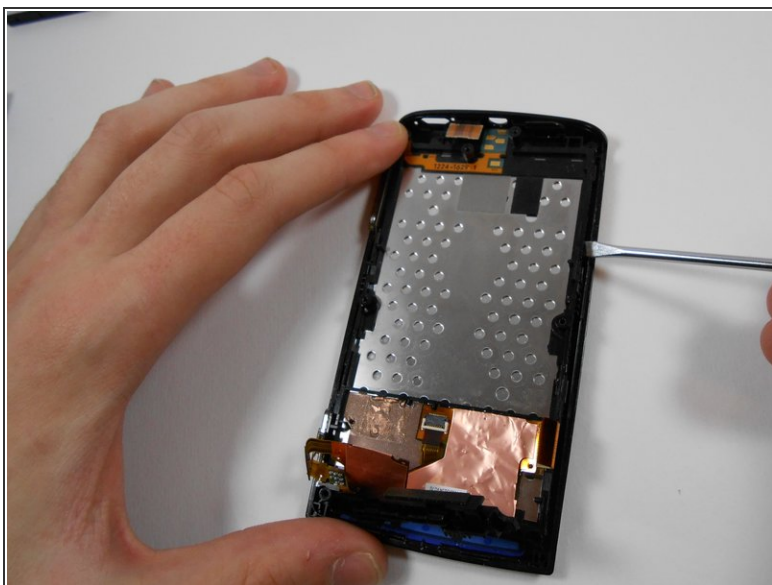


## Step 11



- Using a flat head screw driver, disconnect the glue holding the left ribbon cable to the phone. Pull up the black plastic piece being pointed to in the image.

## Step 12



- Using a flat head screwdriver, pry up the board.
- Remove the power button from the top of the phone.



To reassemble your device, follow these instructions in reverse order. The pieces need to be placed exactly back into the phone as they came out or else they won't fit together correctly.