



Nokia Lumia 520 and 521 Touch Window Replacement

This is a very simple and easy to work on phone. No hidden screws and no glue. The plastic snaps remove easy and the replacement is straight forward.

Written By: oldturkey03



INTRODUCTION

Here is a Nokia Lumia 520 with a broken front glass. It is possible to purchase just the glass, but I opted against this. Nokia refers to the front assembly (Glass and Digitizer) as the Touch Window, it is around \$10 and it is easy to replace. I previously tried unsuccessfully to separate the digitizer from the glass.

This guide is also applicable to the Nokia 521. The Nokia 521 has a 4th M1.5x3 screw in the lower left corner of the battery compartment, as shown in Step 3.



TOOLS:

- [T4 Torx Screwdriver](#) (1)
 - [iFixit Opening Tools](#) (1)
-

Step 1 — Touch Window



- The damage to the digitizer is clearly visible. Nokia refers to the glass/digitizer combo as the "touch window"
- Turn the phone over,
- and release the back cover by pushing it off the phone from the top

Step 2



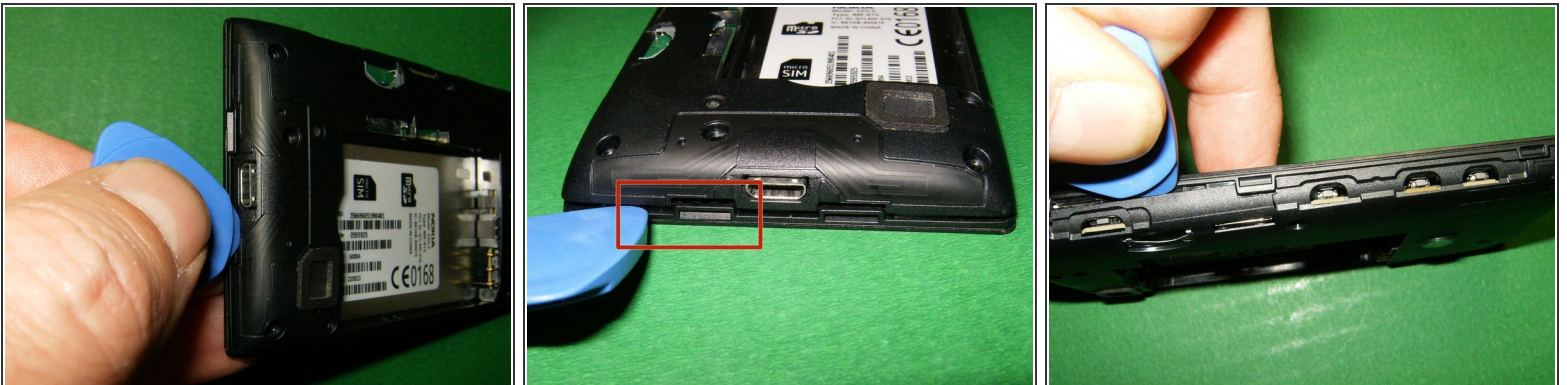
- With the back cover removed, the battery becomes visible.
- Lift up the battery from the bottom and remove it.
- Unscrew the five Torx+4 screws.

Step 3



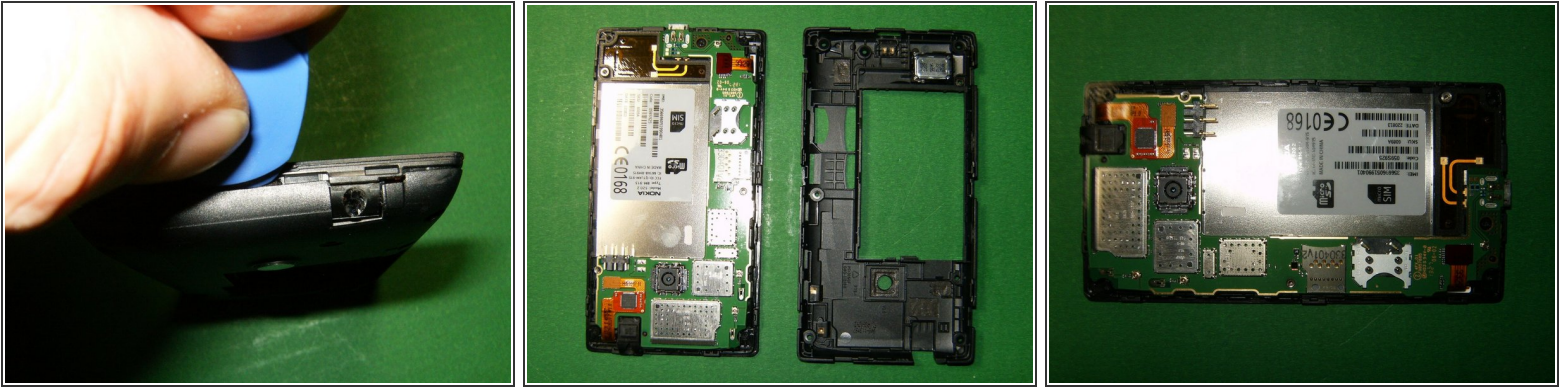
- These five screws are 5mm in length
- Next remove the three Torx+4 screws
- Those screws are machine screws M1.5x3
- The Nokia 521 has a 4th screw in the lower left corner of the battery compartment.

Step 4



- Release the two clips on the bottom of the phone by using a guitar pick or similar opening tool
- Simply insert the tool in the gap between the case halves and slightly rotate the tool to free the clips.
- Continue to work the tool all the way round.

Step 5



- The last clip should be on the top of the phone.
- Once those are released, the case will simply open up. With the cover (Nokia calls it the D-cover) removed, the logic board will be visible.

Step 6



- Remove the digitizer flex cable by using an opening tool, or spudger, from the connector
- Here is the flex cable removed from the connector
- Next remove the display flex with an opening tool, or spudger, from the connector.

Step 7



- Display flex removed from the connector
- Use an opening tool, or a spudger, to remove the logic board from the case. It is simply held in by two clips.
- Remove the logic board from the front assembly

Step 8



- Use a guitar pick or similar opening tool to unsnap the touch window assembly from the support frame.
- This will separate the touch window from the rest of the phone.

To reassemble your device, follow these instructions in reverse order.