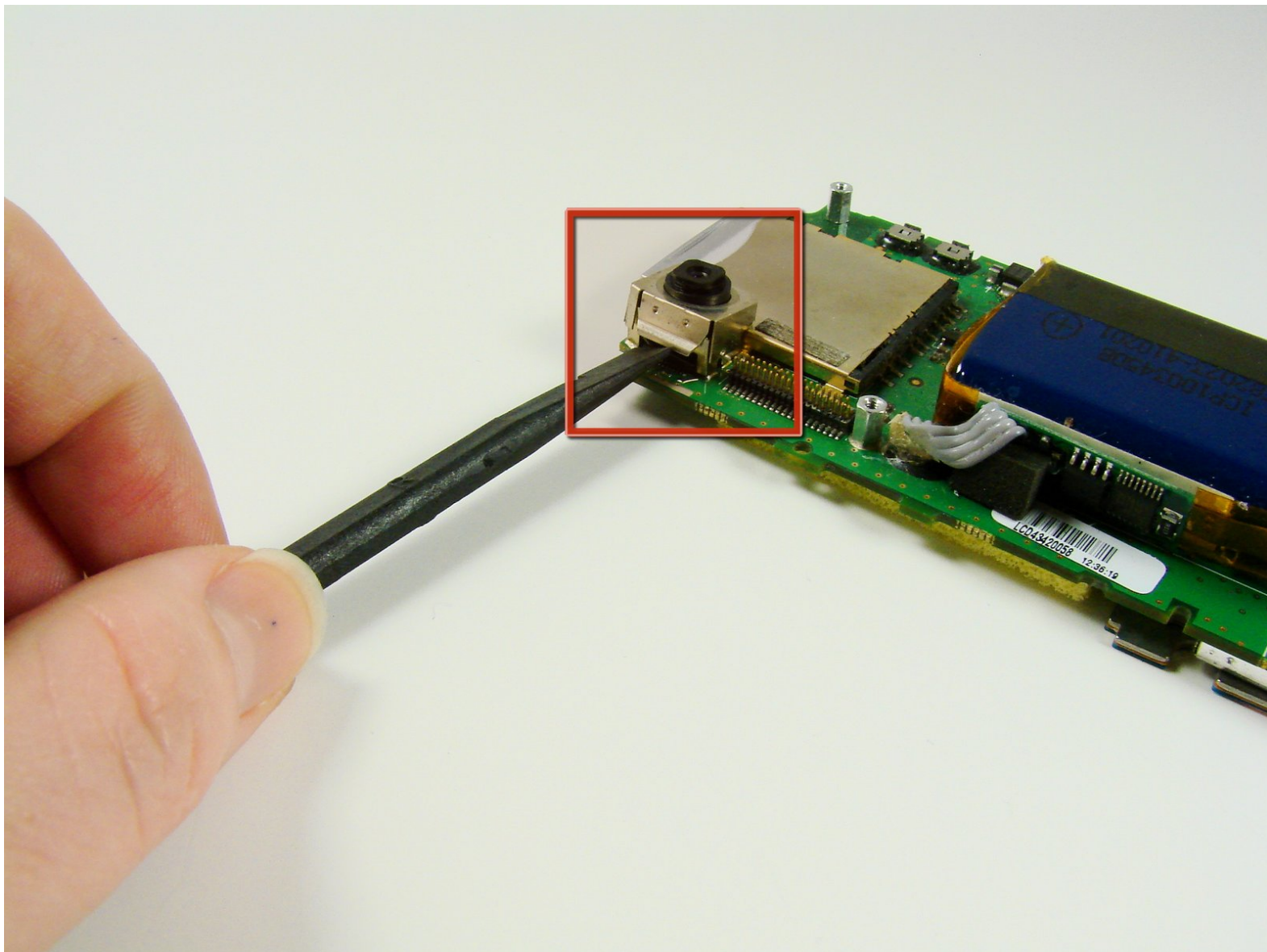




Palm Treo 600 Camera Replacement

Written By: Clement Poisson



INTRODUCTION

If your camera doesn't work and it needs to be replaced, this guide will come in handy.

TOOLS:

- [Spudger](#) (1)
 - [T6 Torx Screwdriver](#) (1)
 - [Tweezers](#) (1)
 - [Phillips #00 Screwdriver](#) (1)
 - [iFixit Opening Tools](#) (1)
-

Step 1 — Back Case



- On the back of the device, locate the 3 rubber plugs, and use a plastic spudger to remove them.

Step 2



- Use the T6 Torx Screwdriver to remove all 4 screws.
- ❗ You have to first remove the Stylus to access the 4th screw.

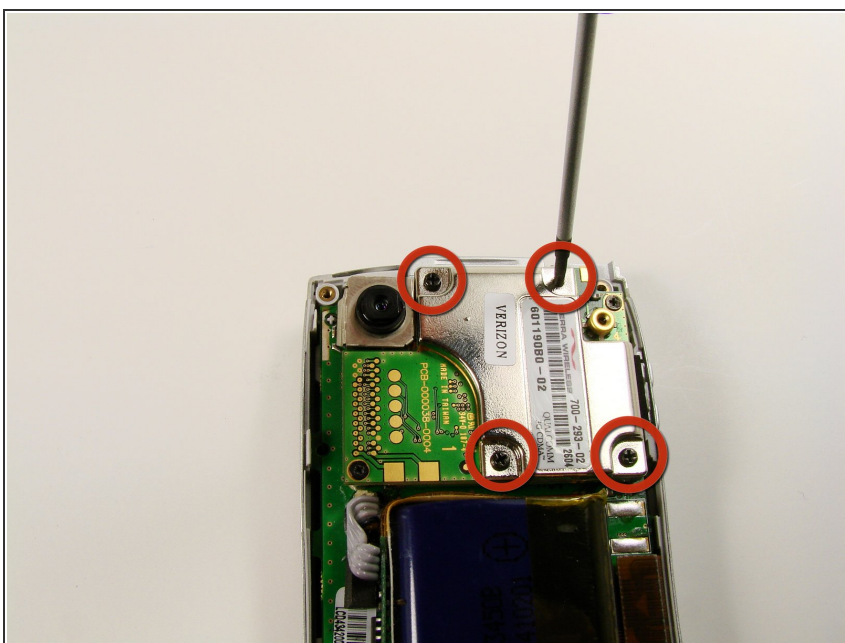
Step 3



- Using a plastic opening tool, carefully separate the front and back cases.

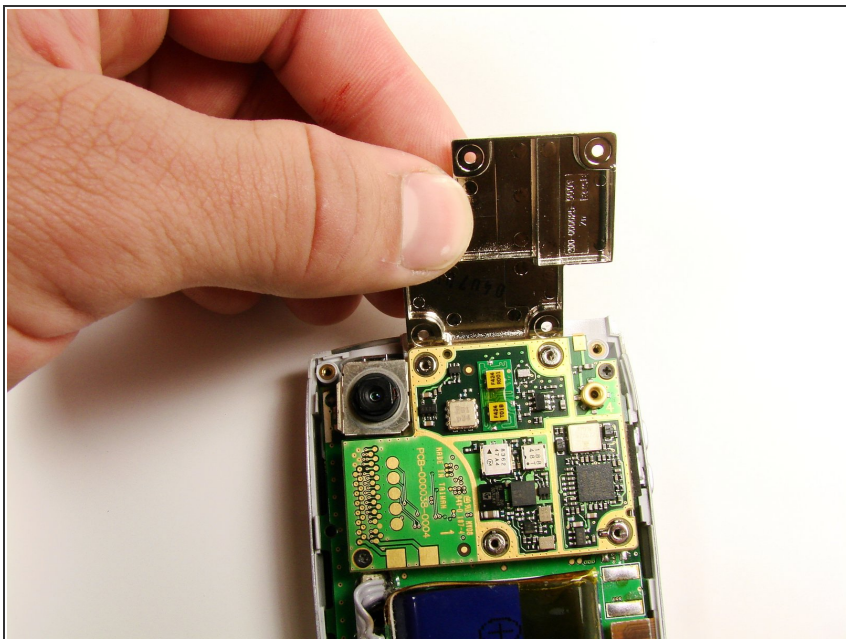
i Note: The antenna will detach from the phone.

Step 4 — Motherboard



- Using the Phillips #00 screwdriver, unscrew the 4 screws holding the silver casing down.

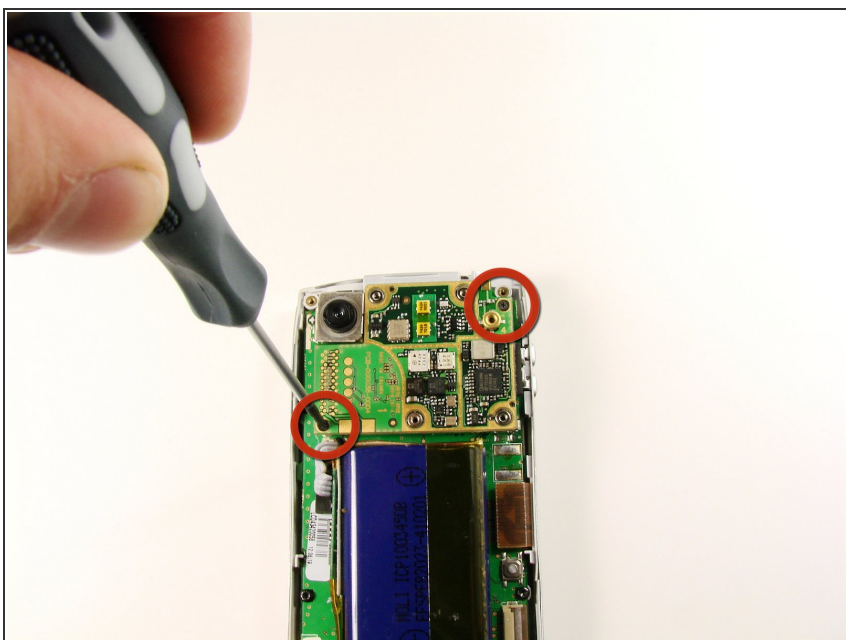
Step 5



- Lift up the silver casing.

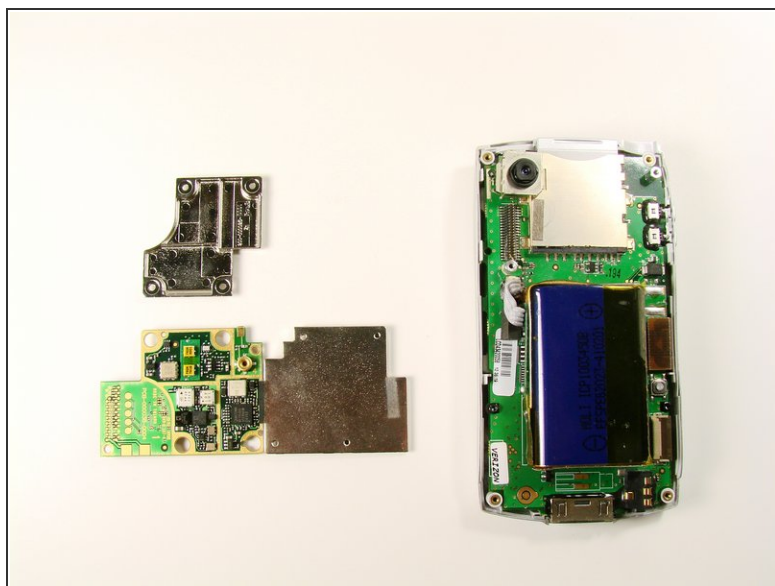
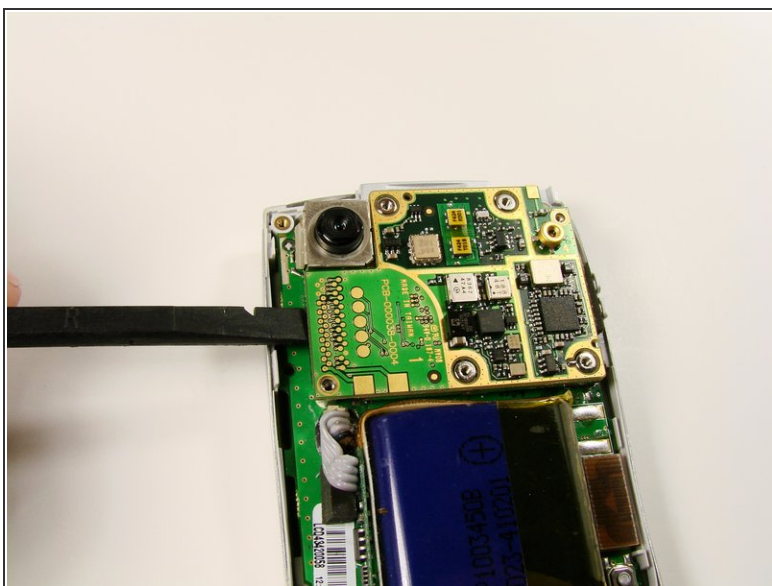
⚠ Careful! The casing is connected to the body. Pull the casing up.

Step 6



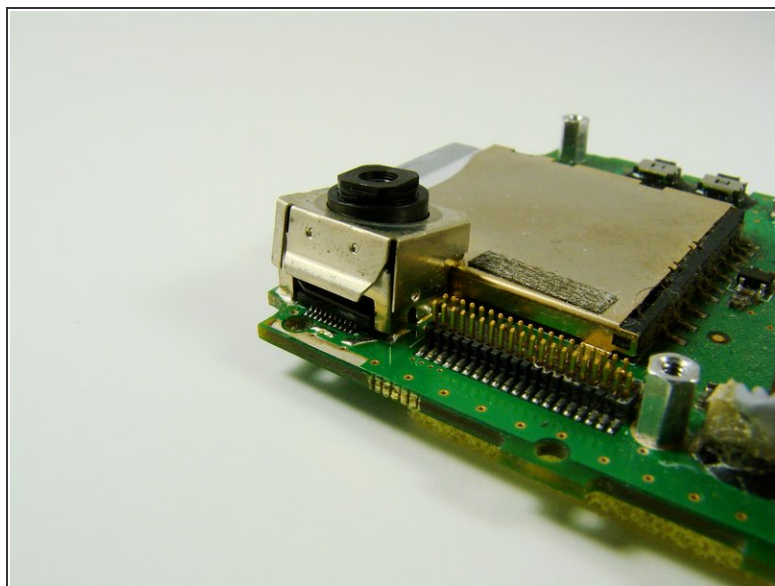
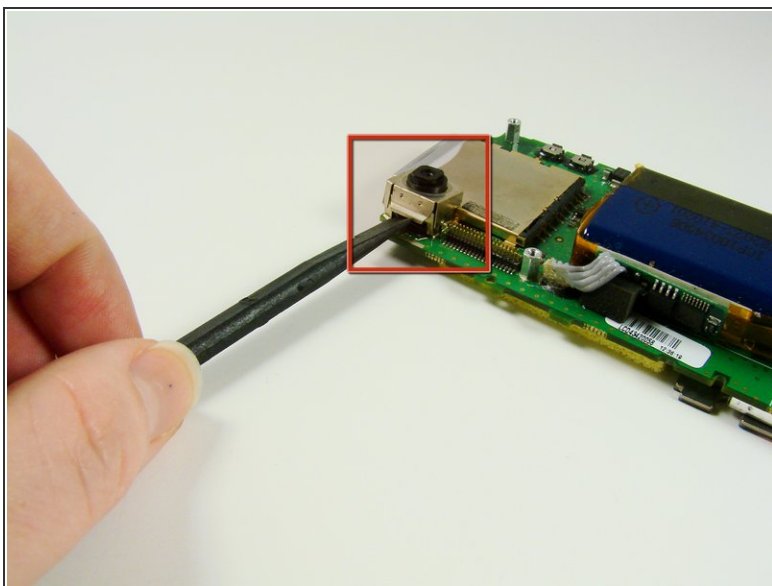
- With the silver casing removed, unscrew two black screws with a #00 Phillips Screwdriver.

Step 7



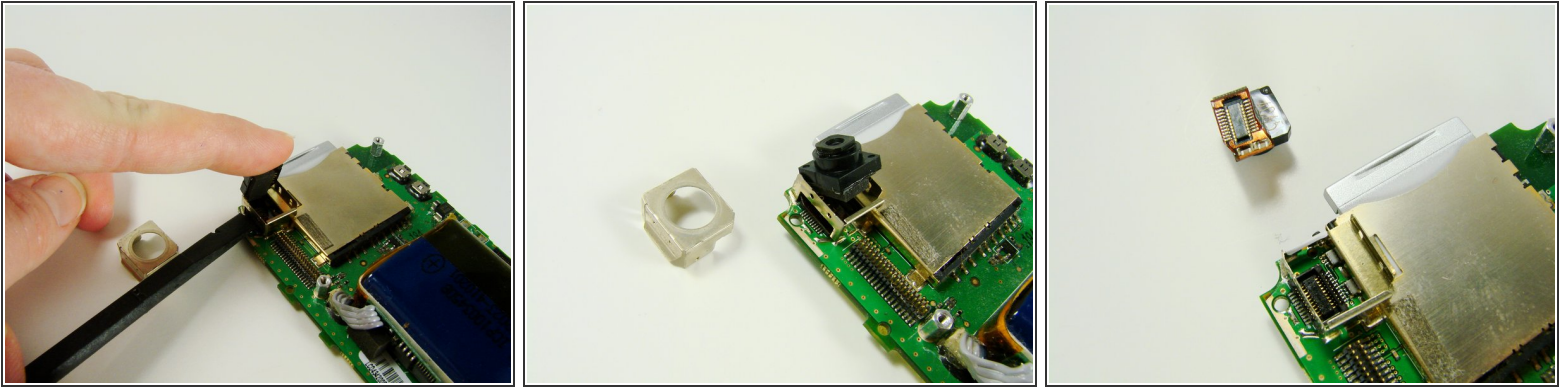
- Use the spudger to lift the logic board from its socket. Remove it from the rest of the phone.

Step 8 — Camera



- Using the flat end of the spudger, lift the metal case off of the camera.

Step 9



- Slide the flat end of the spudger between the printed circuit board and metal holder.
- Pop the camera up

To reassemble your device, follow these instructions in reverse order.