



PlayStation 3 Super Slim Laser Unit Replacement

How to disassemble and change the Laser Unit.

Written By: ZFix



PS3
PlayStation®3 super slim

Laser Unit replacement

INTRODUCTION

How to disassemble and change the Laser Unit.

[video: https://www.youtube.com/watch?v=qXvM_xy4kKU]



TOOLS:

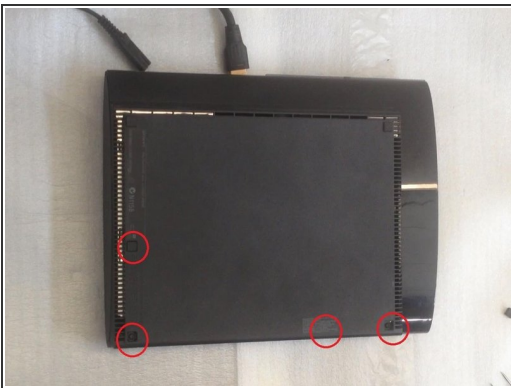
- [Phillips #00 Screwdriver](#) (1)
 - [Metal Spudger](#) (1)
-

Step 1 — Laser Unit / Deck replacement



- Turn off the console and disconnect all cables.

Step 2



- You must remove the warranty sticker and 4 screws.

Step 3



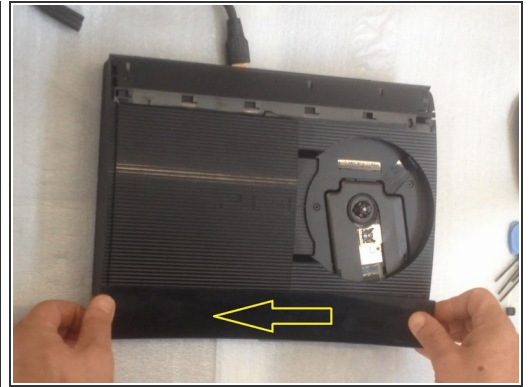
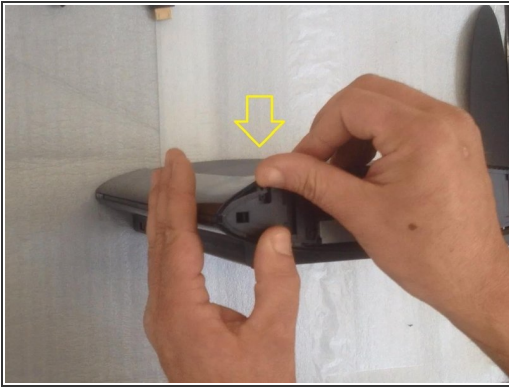
- After removing HDD bay cover, you will see another 3 screw.

Step 4



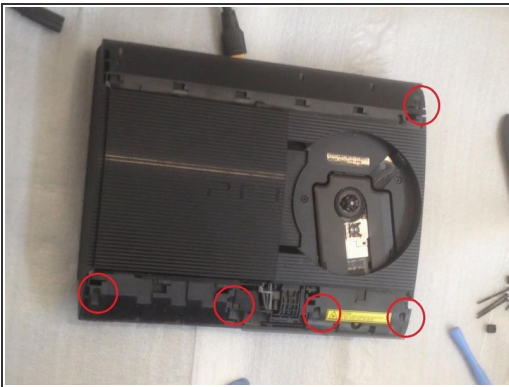
- Push there to release and remove upper back bezel.

Step 5



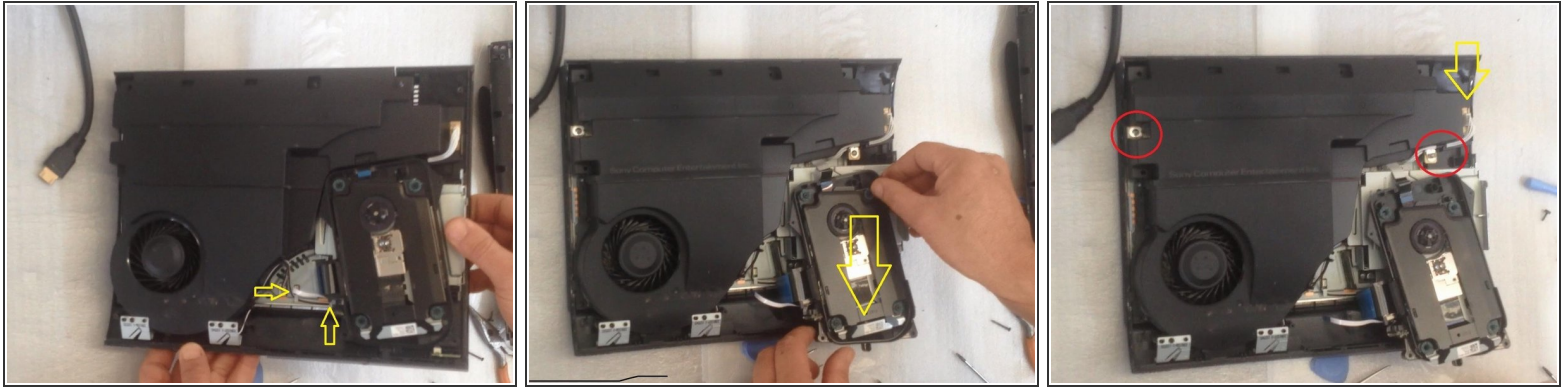
- The upper front bezel is harder to remove.

Step 6



- Remove 7 screws to release top cover.

Step 7



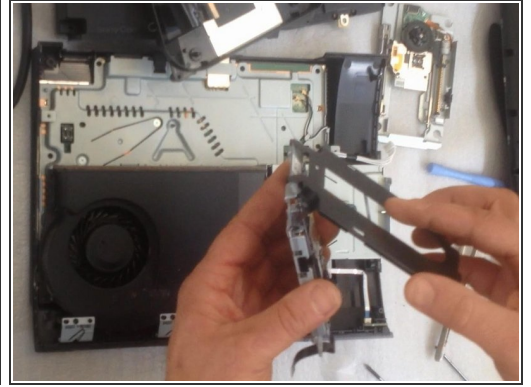
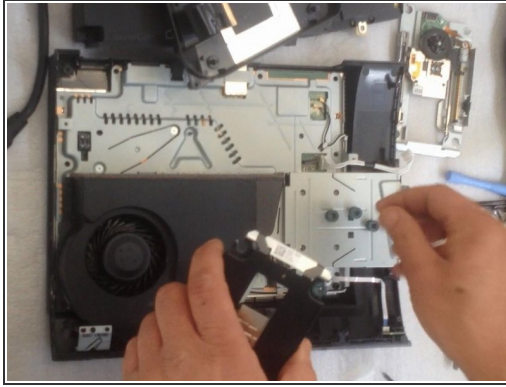
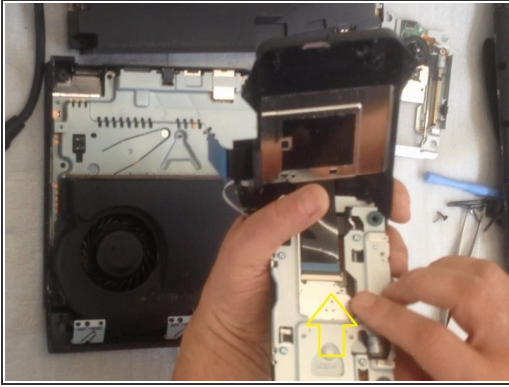
- **Disconnect two flex-cables and move the Laser Unit. Remove the two screws and the small cable and then take out the Power Supply Unit.**

Step 8



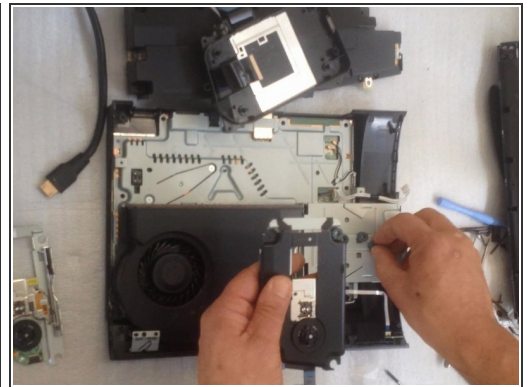
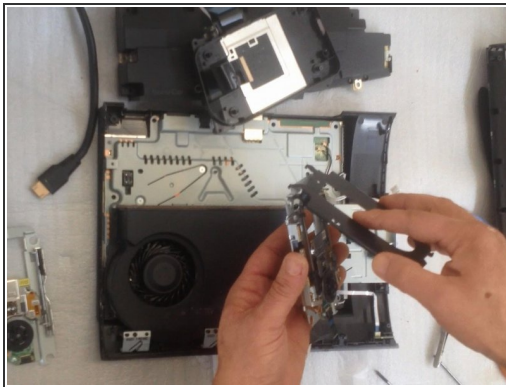
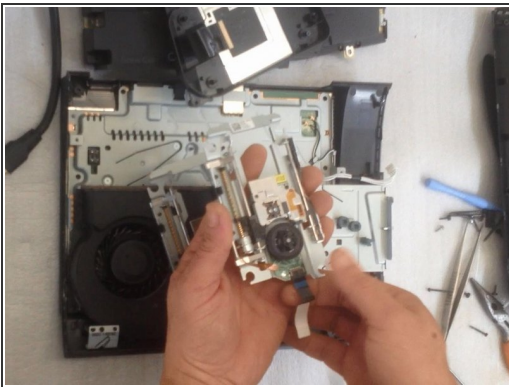
- **To release the laser unit disconnect this flex-cable.**

Step 9



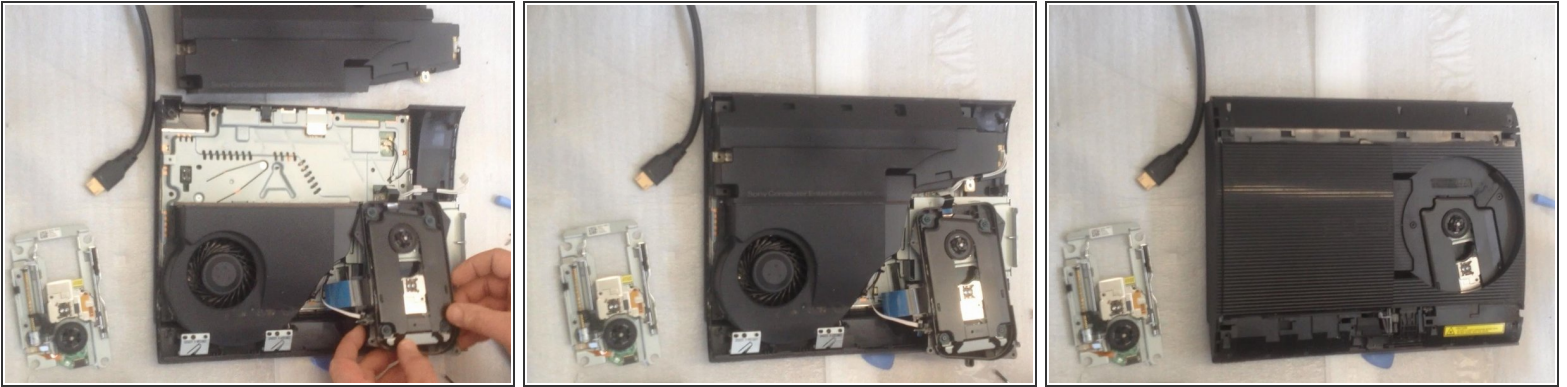
- One flex-cable, for rubbers and the metal bezel.

Step 10



- Disconnect this flex-cable and attach it to the new spare part. Let's start assembling.

Step 11



- **Assembling, assembling...**

Step 12



- **Let's test the device before fully assembling it.**

To reassemble your device, follow these instructions in reverse order.