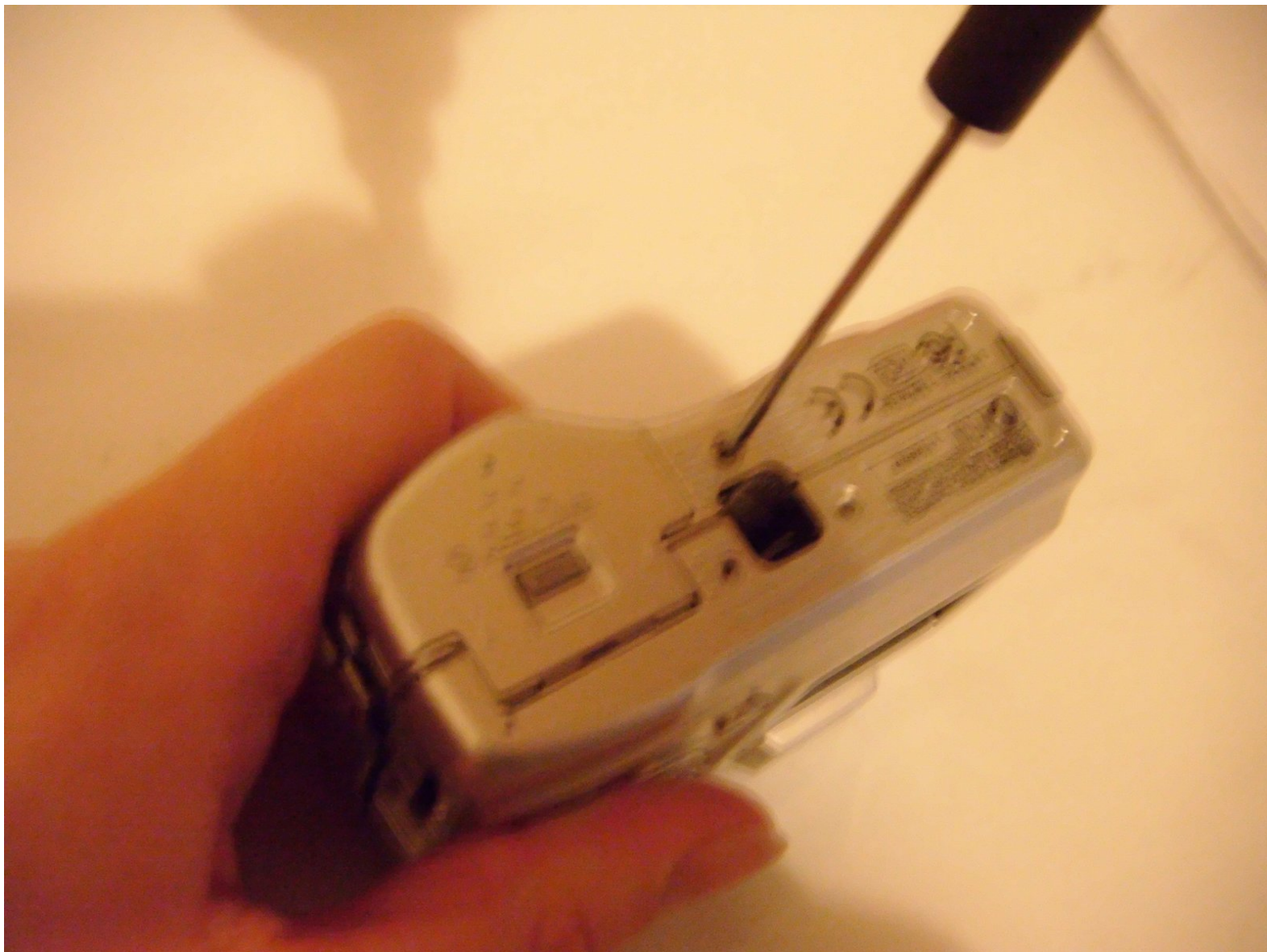




Nikon Coolpix 3200 Teardown

Written By: Milly Whitehead



INTRODUCTION

Here is the disassembly for a Nikon Coolpix 3200 digital camera.



TOOLS:

- [Phillips #00 Screwdriver](#) (1)
-

Step 1 — Nikon Coolpix 3200 Teardown



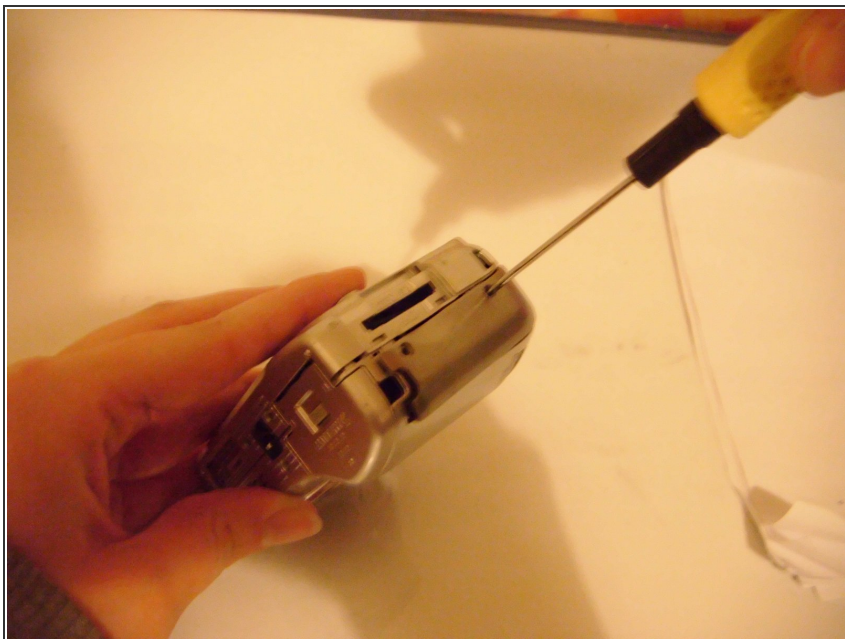
- Use a small Philips screwdriver to remove the screws from the base of the camera.

Step 2



- Use a small Philips screwdriver to remove the screws from the side of the camera where the computer lead is.

Step 3



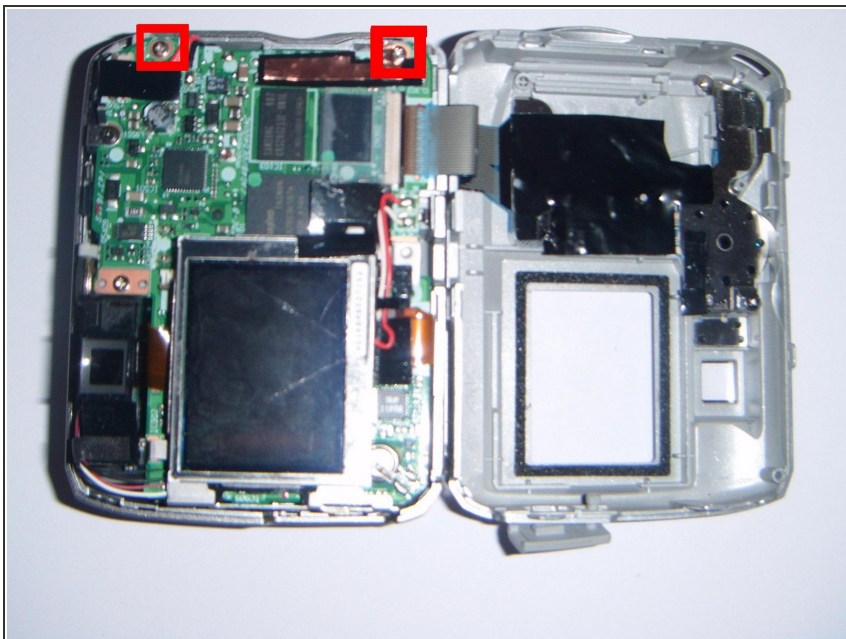
- Use a small Philips screwdriver to remove the two screws from the side of the camera where the card reader is.

Step 4



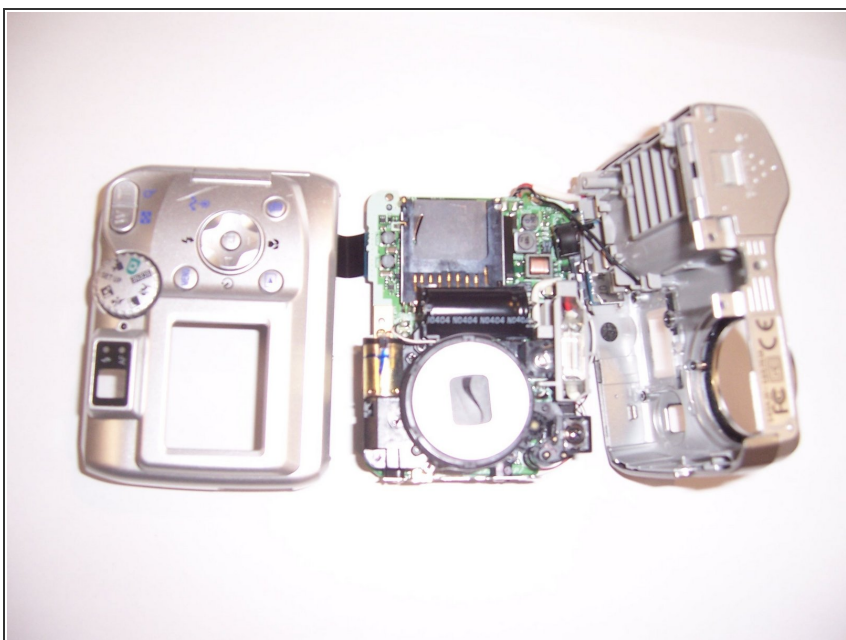
- Pry apart the outer casing. A gray plastic threaded piece (used to attach camera to a tripod) will fall out.

Step 5



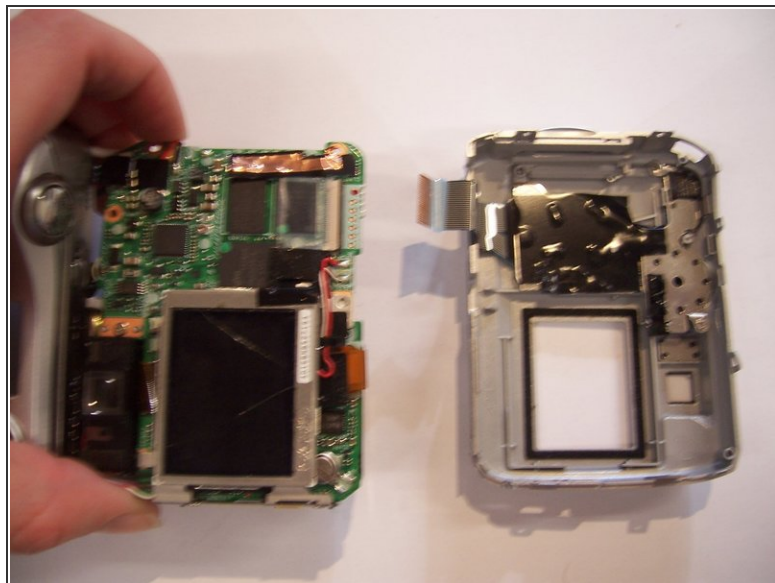
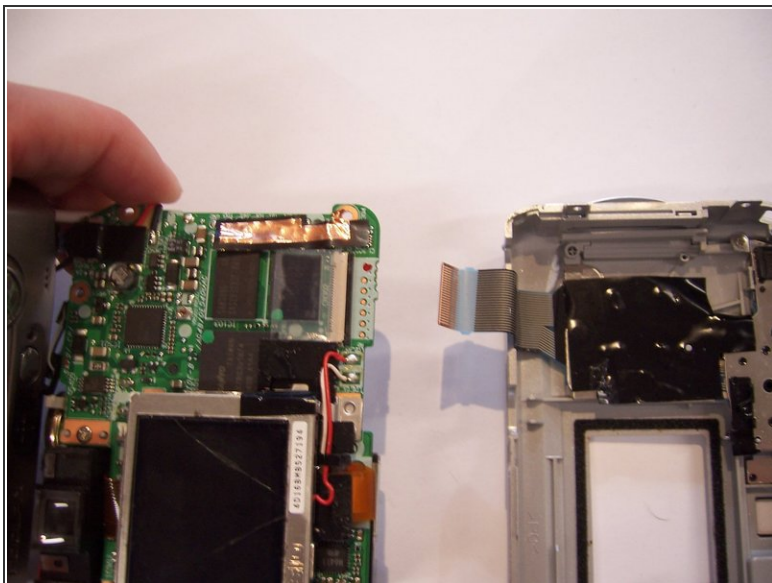
- Use a Phillips screwdriver to remove the two silver screws that connect the circuit board to the outer front casing.

Step 6



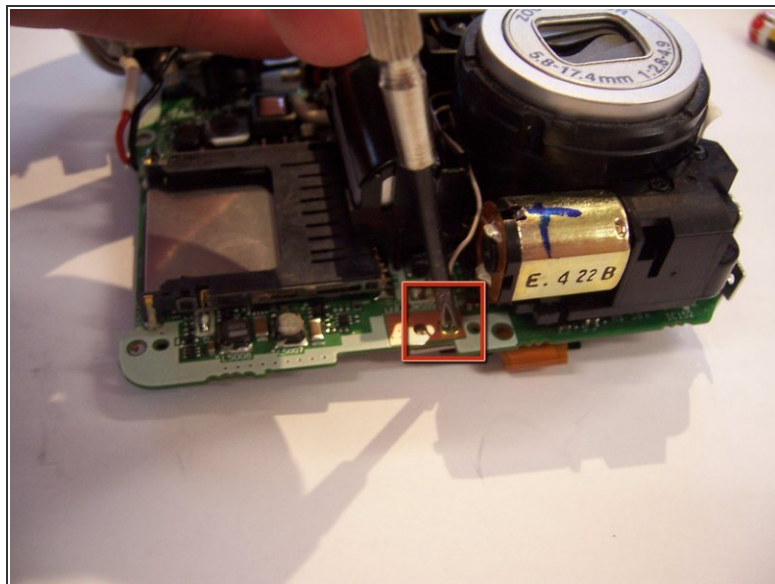
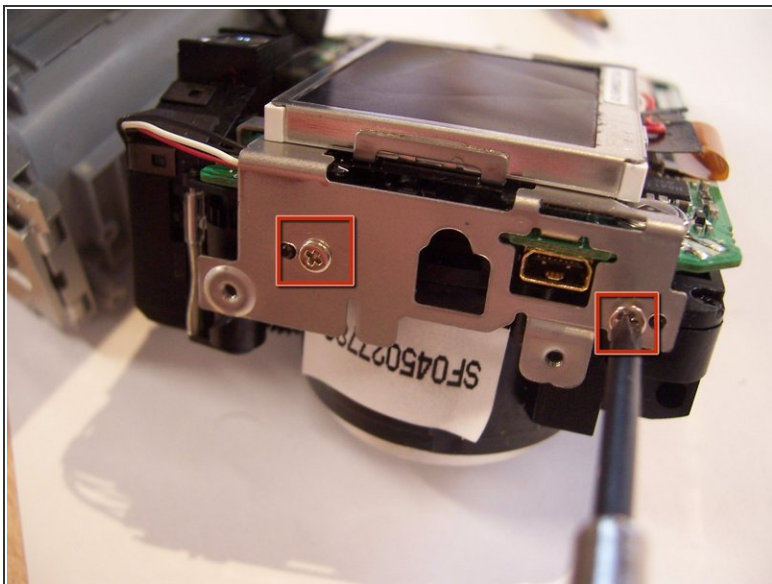
- Pry apart the front outer casing from the circuit board. The camera will now be in three pieces.

Step 7



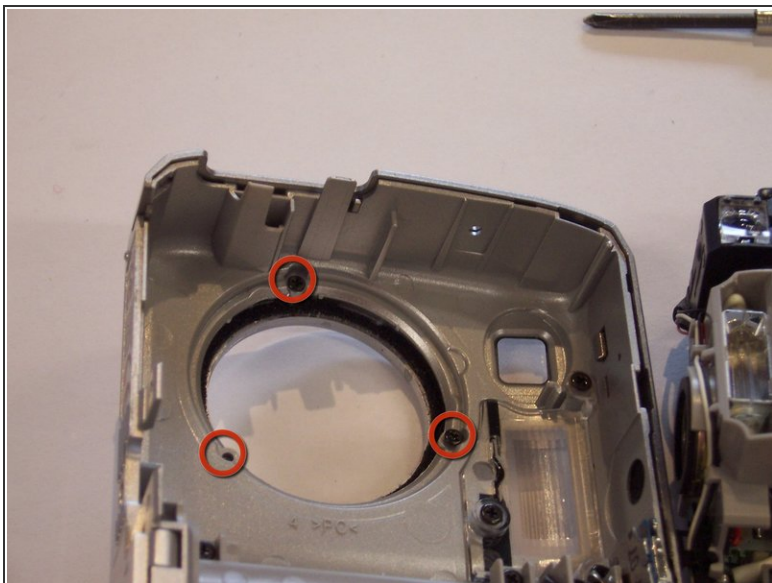
- Pull the connecting strip on the circuit board which connects it to the back outer casing.

Step 8



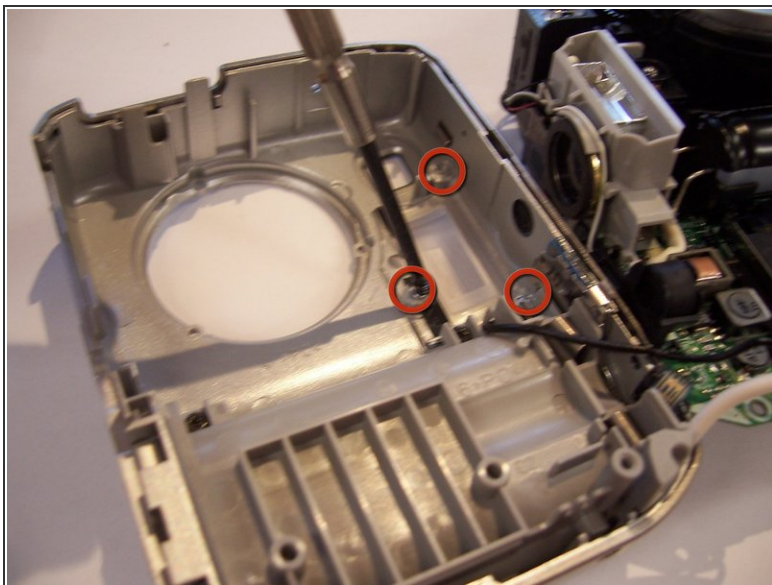
- Use a Philips screwdriver to remove the two screws next to the computer port and the brass screw on the circuit board.

Step 9



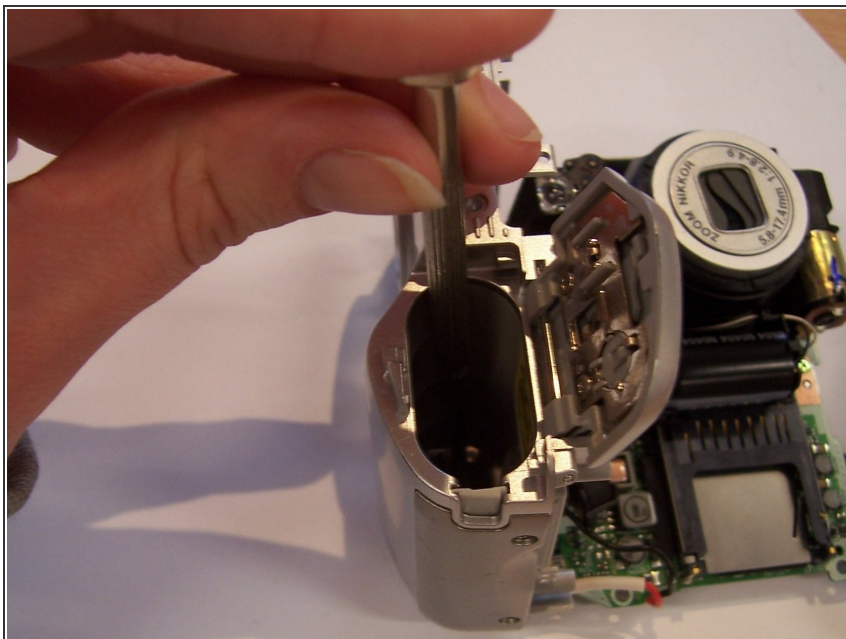
- Use a Phillips screwdriver to unscrew the three screws that connect the outer lens rim to the front casing.

Step 10



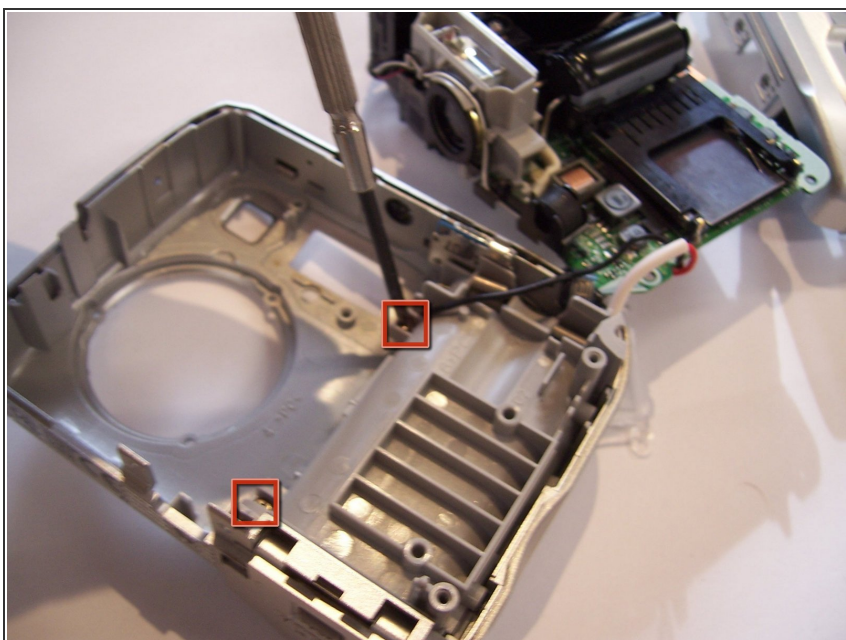
- Use a Philips screwdriver to remove the three screws that hold the flash cover to the outer front casing.

Step 11



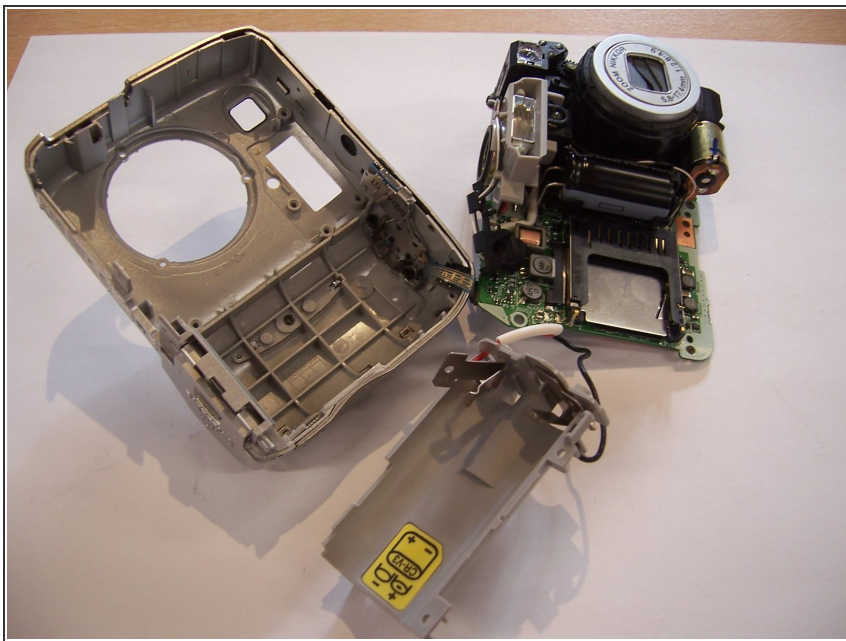
- Open the lid of the battery compartment and use a Phillips screwdriver to remove the two screws at the bottom.

Step 12



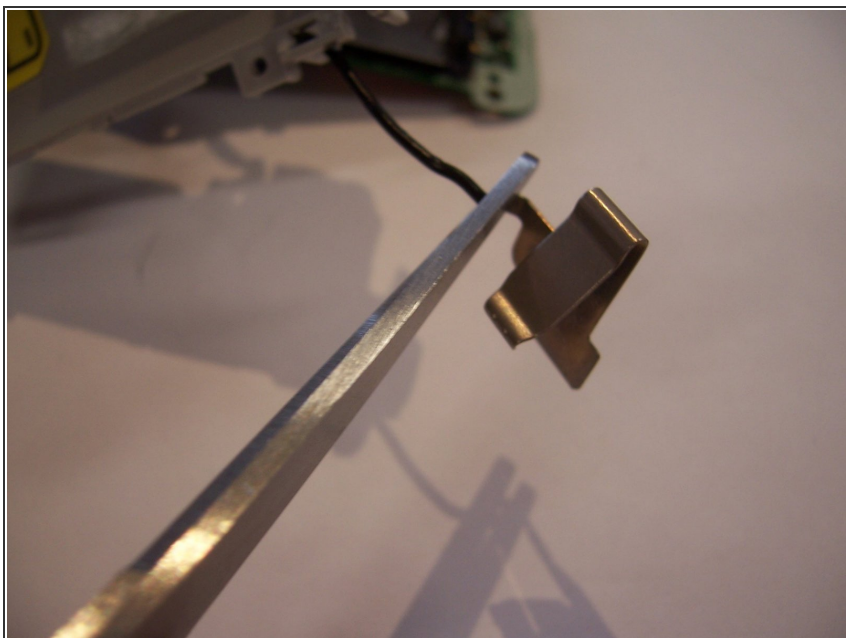
- Use a Phillips screwdriver to unscrew the two screws that connect the inside battery casing to the front of the outer casing.

Step 13



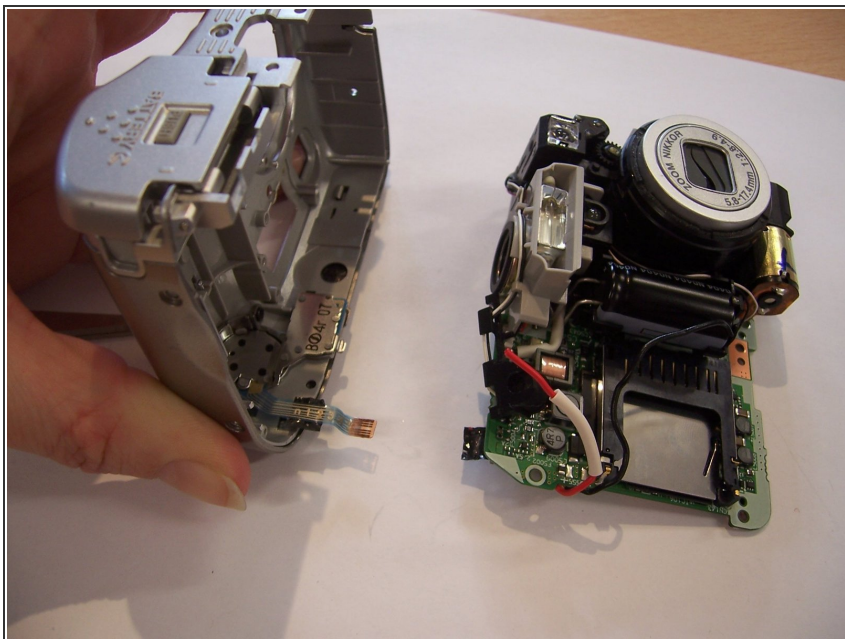
- Pull off the battery casing from the inside of the outer front casing. The circuit board, battery casing, and front outer casing will be attached by a connecting strip along with red and black wires.

Step 14



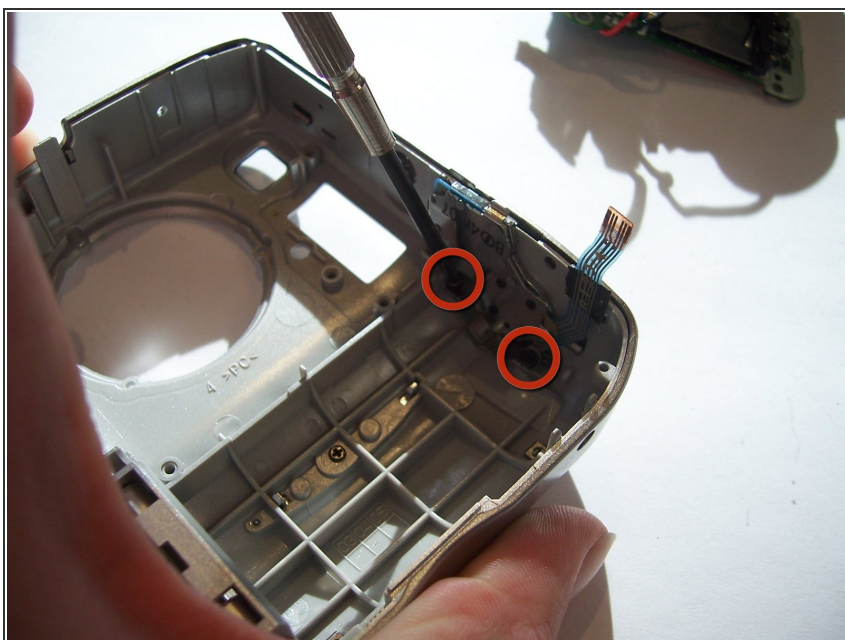
- Use scissors to cut the red and black wires away from the battery points of contact.

Step 15



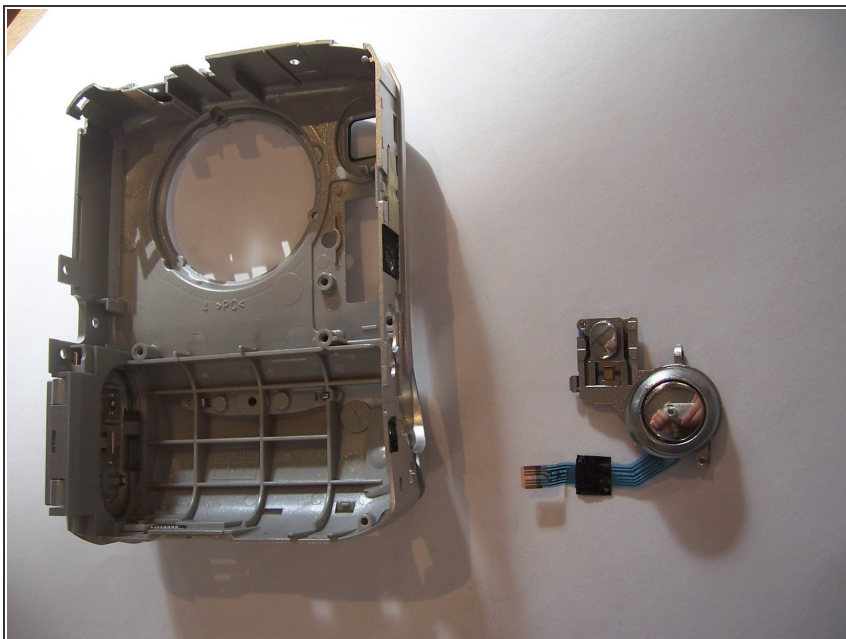
- Pull the connecting strip away from the circuit board to separate it from the front casing.

Step 16



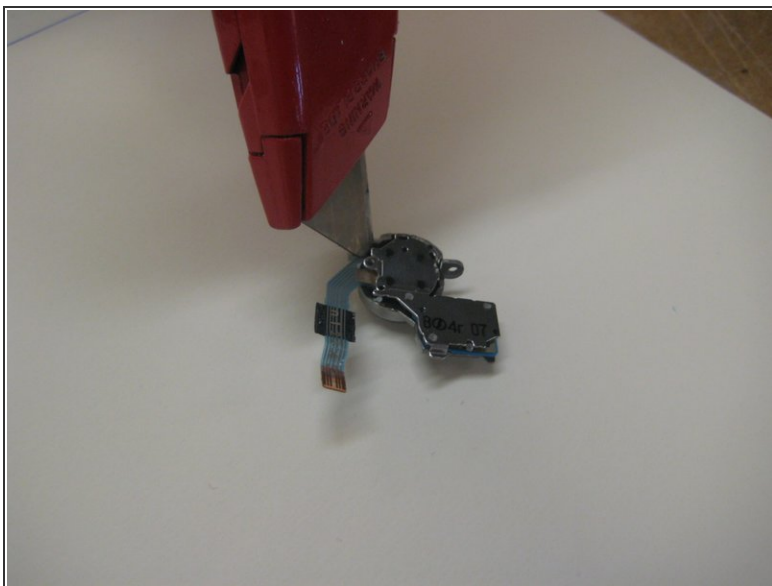
- Use a Philips screwdriver to unscrew the two screws that connect the photo button to the outer front casing.

Step 17



- Firmly press on the photo button and this component will pop out.

Step 18



- Use a scalpel to pry apart the metal inner part of the button from the plastic outer piece.

Step 19



- Use your fingernails to peel the outer rim from the front casing.

Step 20



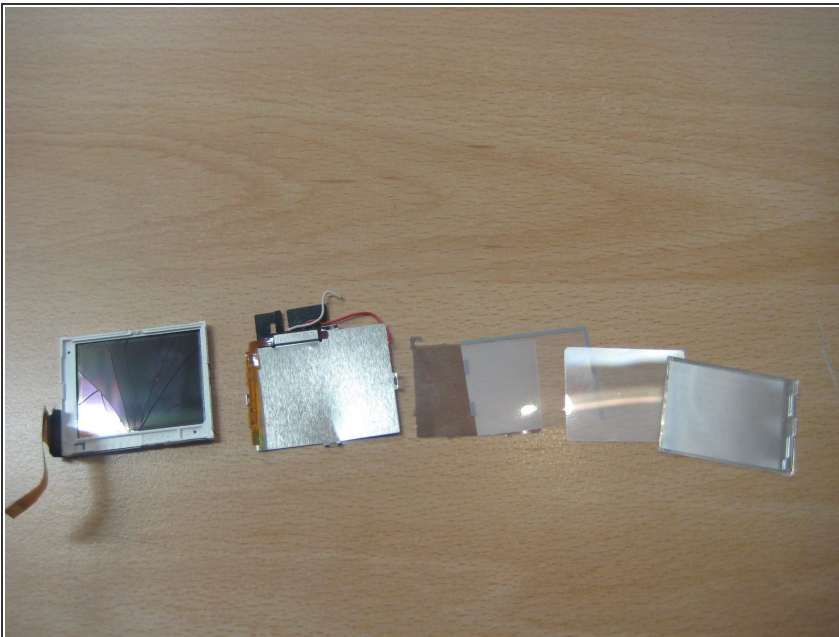
- Pull the connecting strip out of the circuit board to separate it from the LCD screen.

Step 21



- Use your fingernails to pry apart the back metal piece of the screen (covered by a black plastic film) from the front section of the screen.

Step 22



- Pry apart the back black piece and front white piece of the screen. Inside the screen there are four sheets of plastic: one opaque, two mirrored, and one thicker plastic sheet which has a foil piece attached to it.

Step 23



- Use a hammer and chisel to separate the lens piece of the camera from the circuit board.

Step 24



- Use your fingernails to pry off the motor, motor cover, and flash piece from the lens piece of the camera.

To reassemble your device, follow these instructions in reverse order.