



Tesco Value JK07 Kettle Teardown

Teardown of a Tesco Value JK07 Kettle.

Written By: emily king



INTRODUCTION

This guide explains how to take apart the standard Tesco Value Kettle, so you can see its internal parts.

TOOLS:

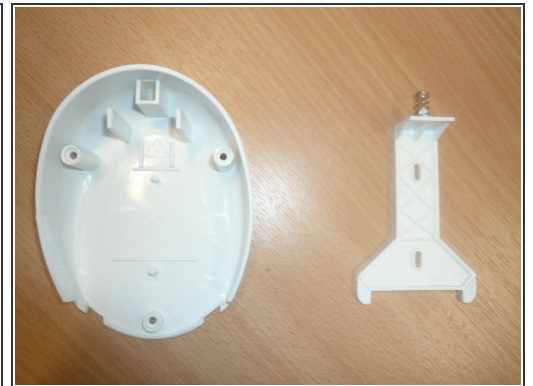
- [Phillips #1 Screwdriver](#) (1)
-

Step 1 — Tesco Value JK07 Kettle Teardown



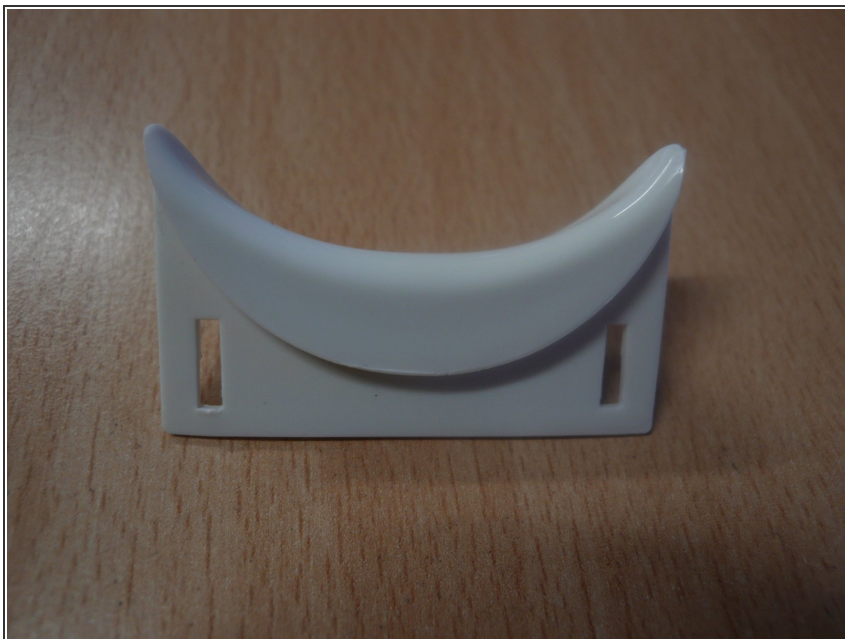
- Remove the kettle from its base.
- Remove the limescale filter by sliding it out from the lip.

Step 2



- Remove the screw from the bottom side of the lid.
- Disassemble the lid and remove the plastic piece inside.

Step 3



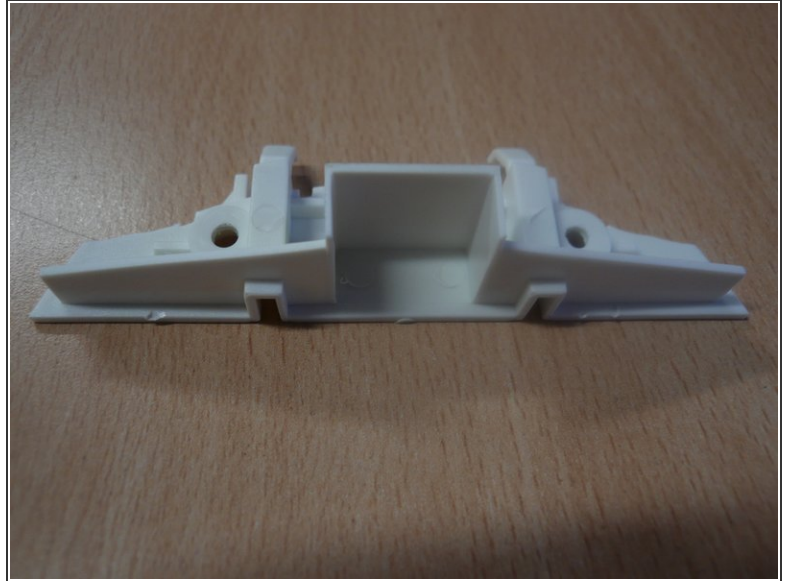
- Remove the button that opens the lid by sliding it out.

Step 4



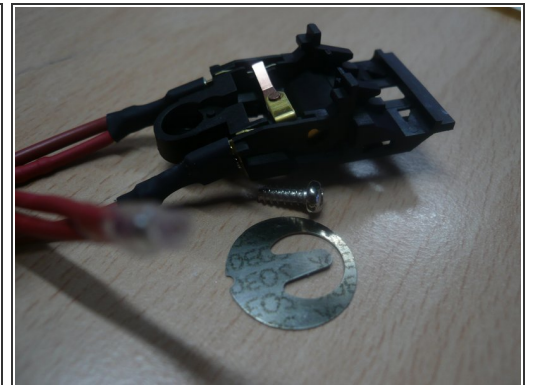
- Remove the screws on the underside of the kettle to release the socket cover.
- Separate the handle from the kettle.

Step 5



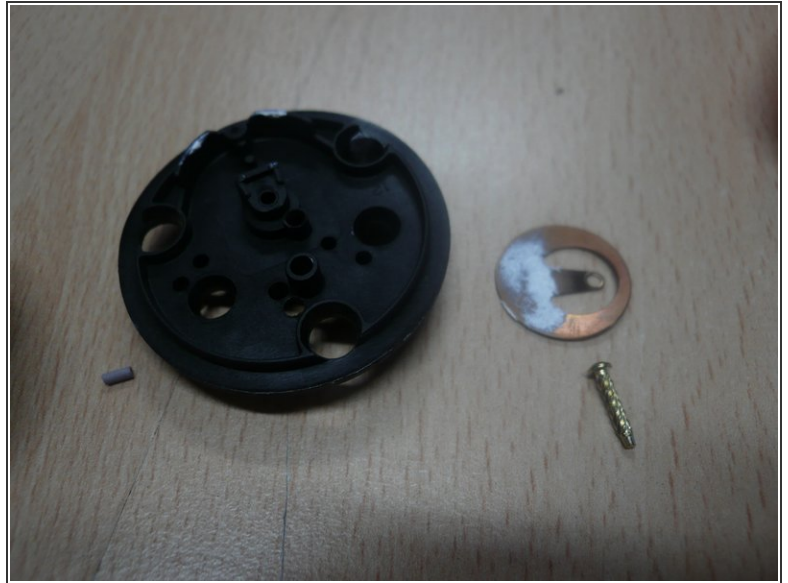
- Remove the screws to separate the handle and the lid from the hinge.

Step 6



- Gently remove the switch cover.
- Remove the circular piece attached to the switch base by gently pulling it away.

Step 7



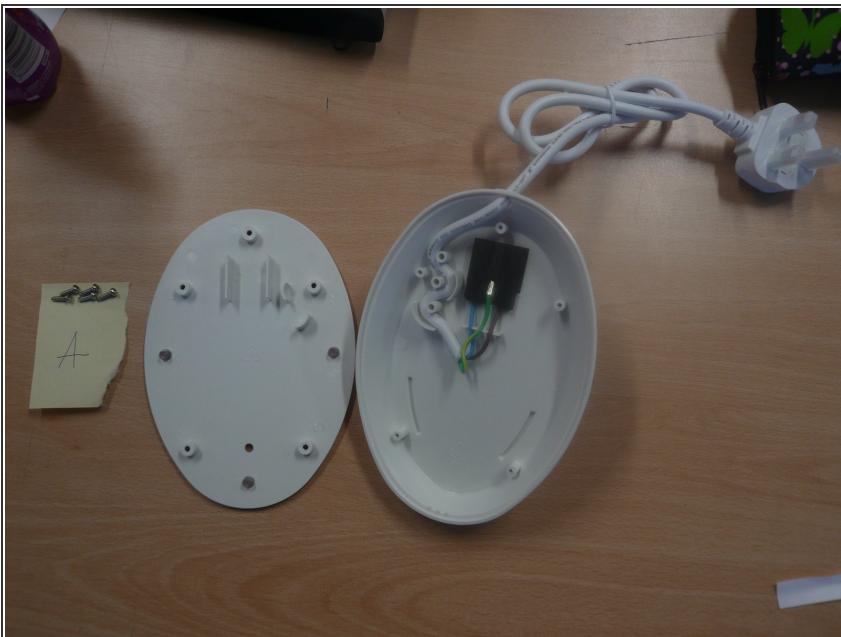
- Remove the screws from the socket at the back of the kettle.
- These screws also hold the socket together, so once they have been removed, it can be opened.
- The components within the socket are clipped in. Remove the components by gently pulling.

Step 8



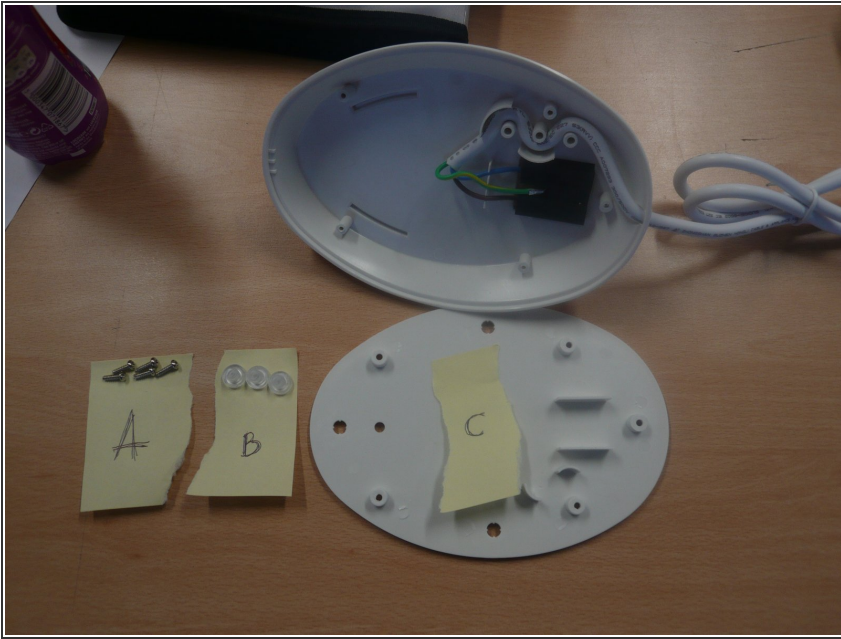
- Remove the heating element.
- Remove the gasket.
- Remove the plate beneath the heating element by bending the metal in the holes as shown in the picture. Remove the plate from the clips.

Step 9



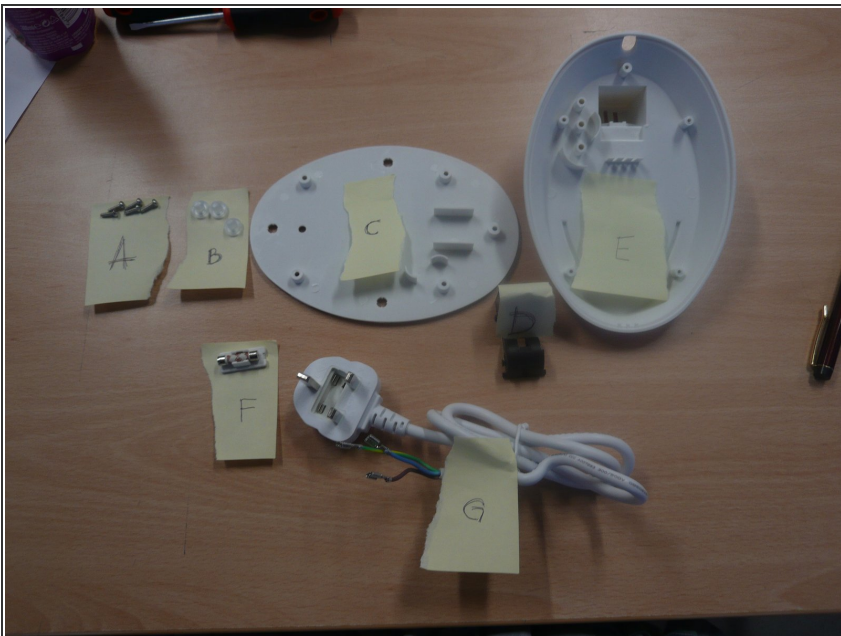
- Remove all the screws from the bottom, then gently separate the two halves.

Step 10



- Push the feet (B) out from the base (C).

Step 11



- The plug and cable (G) are held in by clips and can be pulled away.
- The fuse (F) can be pulled away from inside the pins on the plug (G).

Step 12



- The kettle is now fully disassembled.
- There should be 26 separate parts, all shown here in this photo.

To reassemble your device, follow these instructions in reverse order.