



iPad Wi-Fi Speakers Replacement

Replace your iPad Wi-Fi's speaker assembly.

Written By: Miroslav Djuric



INTRODUCTION

Replace the speaker assembly and restore sound to your iPad.



TOOLS:

- [Metal Spudger](#) (1)
- [iFixit Opening Tools](#) (1)
- [T5 Torx Screwdriver](#) (1)




PARTS:

- [iPad Display Clip Set](#) (1)
- [iPad Wi-Fi \(1st Gen\) Speaker Assembly](#) (1)

Step 1 — Display Assembly





- If your display glass is cracked, keep further breakage contained and prevent bodily harm during your repair by taping the glass.
- Lay overlapping strips of clear packing tape over the iPad's display until the whole face is covered.
 - ⓘ This will keep glass shards contained and provide structural integrity when prying and lifting the display.
- Do your best to follow the rest of the guide as described. However, once the glass is broken, it will likely continue to crack as you work, and you may need to use a metal prying tool to scoop the glass out.

 Wear safety glasses to protect your eyes, and be careful not to damage the LCD screen.

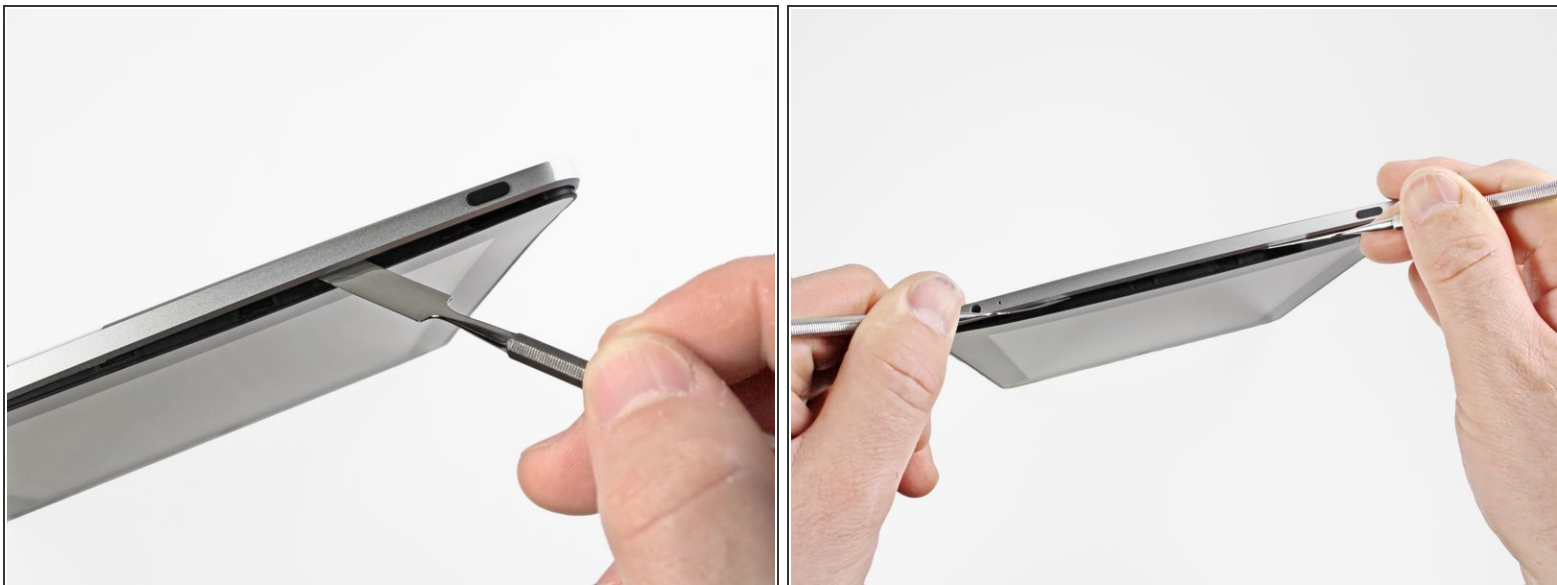
Step 2



 In this guide you will be prying the iPad's display assembly away from the aluminum body. Read ahead and follow the directions closely to avoid damaging the display assembly or the fragile clips holding it in place.

- There are 14 metal clips holding the display assembly in place, shown at left. As you pry in the following steps, do your best to pry *around* these clips and not slice *through* them with your opening tool.
-  If you do happen to break some clips, you can buy replacements [here](#).

Step 3



- Insert a metal spudger between the top edge of the display assembly and the rear panel assembly.
- Rotate the spudger away from you to release the tabs along the top edge of the display.
- Insert a second metal spudger between the top edge of the display assembly and the rear panel assembly to keep the tabs from snapping back into place.

Step 4




- With one spudger, work your way along the right edge of the iPad.
- The front panel is held to the aluminum back by metal clips on the top, bottom, and left sides. The right side has plastic tabs which slide into recesses in the backplate.
- Once the clips are released, lift the left side of the front panel up and slide it to the left to clear the tabs from the aluminum backplate.

 Pry carefully and gently—if you feel resistance, stop and pry at another spot.

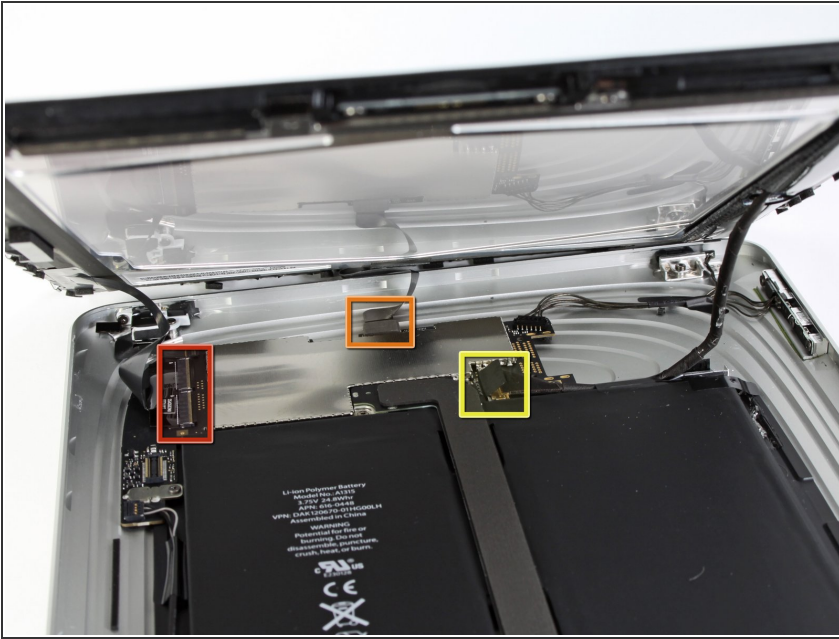
Step 5



- Lift the display assembly away from the rear panel assembly by its bottom edge.

 Do not attempt to remove the display at this time, as it is attached to the rear panel assembly.

Step 6



- In the following steps, you will disconnect the three cables attaching the display assembly to the logic board. The cables are for the following components:
 - Digitizer
 - Ambient Light Sensor
 - Display Data Cable

Step 7



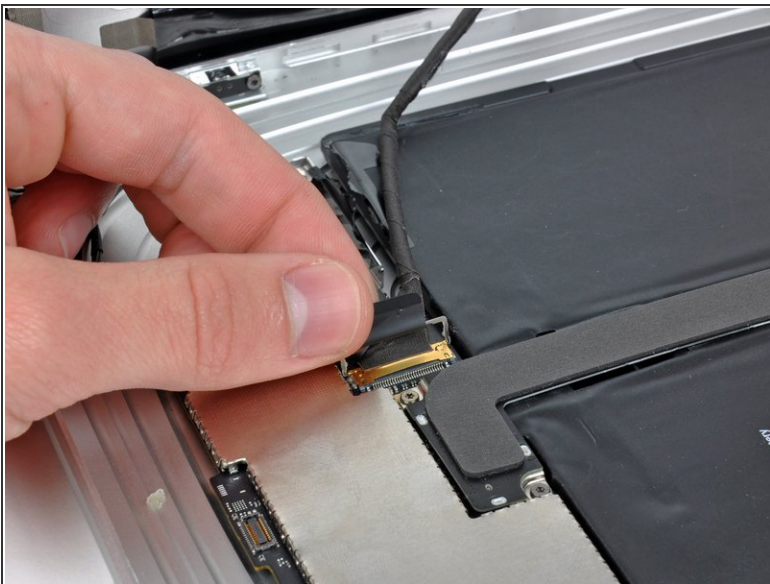
- Use the edge of a plastic opening tool to flip up the retaining flaps holding the digitizer ribbon cables in their sockets on the logic board.
- ⚠ Be sure you are flipping up the retaining flap, **not** the socket itself.
- Pull the digitizer ribbon cables straight out of their sockets.

Step 8



- Use a plastic opening tool to remove the ambient light sensor connector from its socket by gently prying upward.

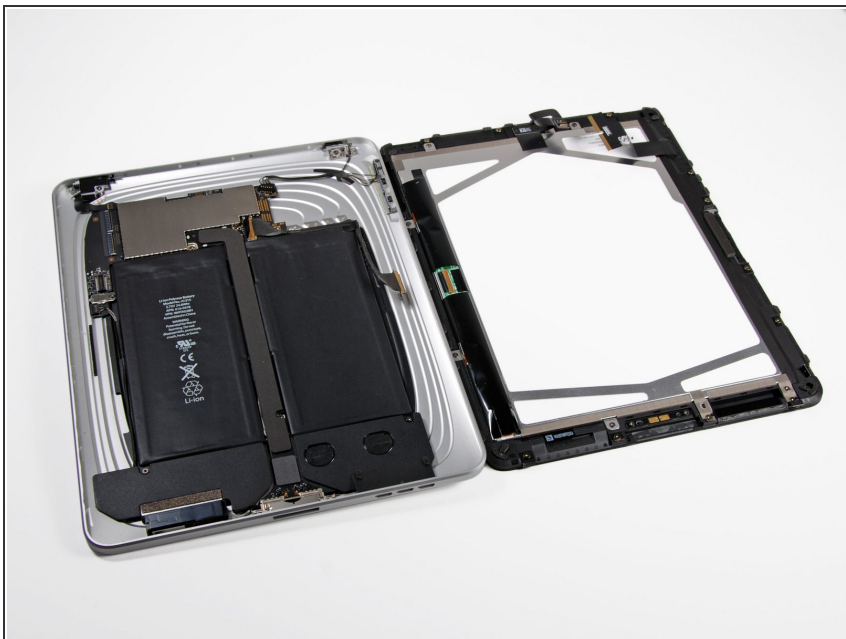
Step 9



- Disconnect the display data cable from the main board by flipping up the metal retainer by its black plastic pull tab.
- Pull the cable connector away from its socket.
- Pull the connector parallel to the face of the logic board.

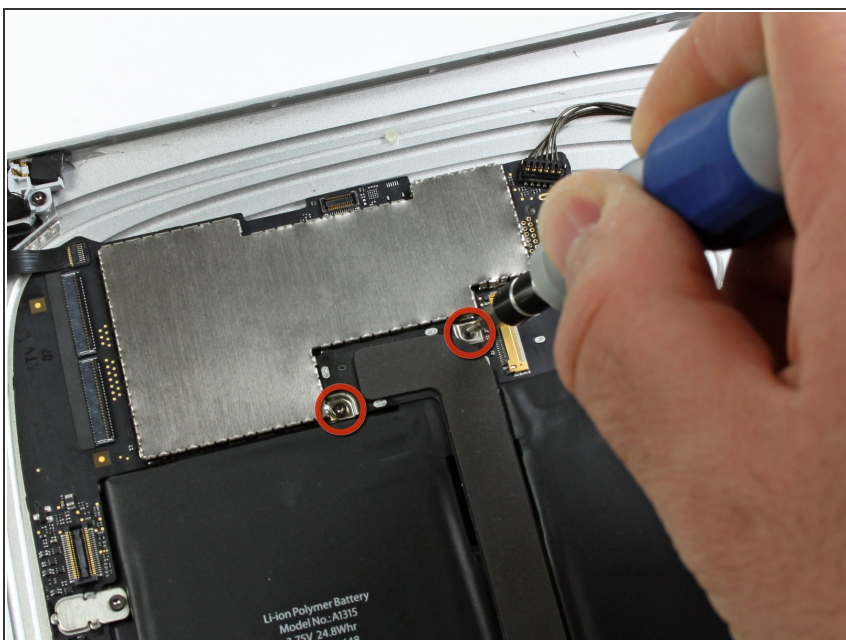
This document was generated on 2020-11-20 09:11:54 AM (MST).

Step 10



- Remove the display assembly from the rear panel assembly.

Step 11 — Dock Connector Cable



- Remove the two 4.56 mm T5 Torx screws securing the dock connector cable to the main board.

Step 12



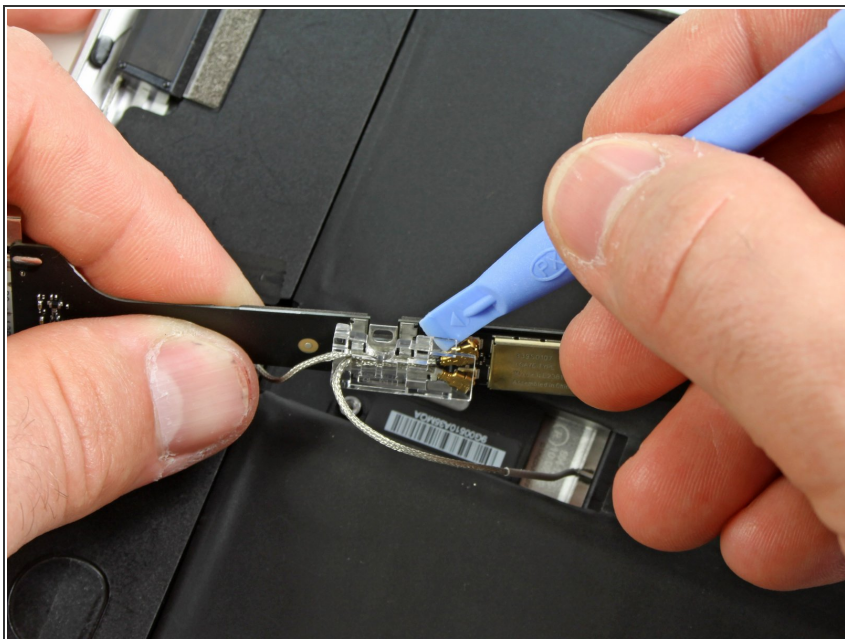
- Remove the single 2.84 mm T5 Torx screw connecting the dock connector cable to the rear case assembly.

Step 13



- Remove the two 2.84 mm T5 Torx screws securing the dock connector cable to the rear panel assembly.

Step 14



- Carefully remove the plastic cover over the WiFi/Bluetooth board and dock connector cable using a plastic opening tool.

Step 15



- Pry the Wi-Fi and Bluetooth antennas up off their respective sockets on the Wi-Fi/Bluetooth board.
- Remove the dock connector cable from the rear panel assembly.

Step 16 — Speakers



- Use the edge of a plastic opening tool to disconnect the speaker connector from the logic board.
- ⓘ Pry up from beneath the wires.

Step 17



- Remove the two 2.84 mm T5 Torx screws securing the speaker assembly to the rear panel assembly.
- ⓘ If necessary, remove the tape covering the Wi-Fi cables.

Step 18



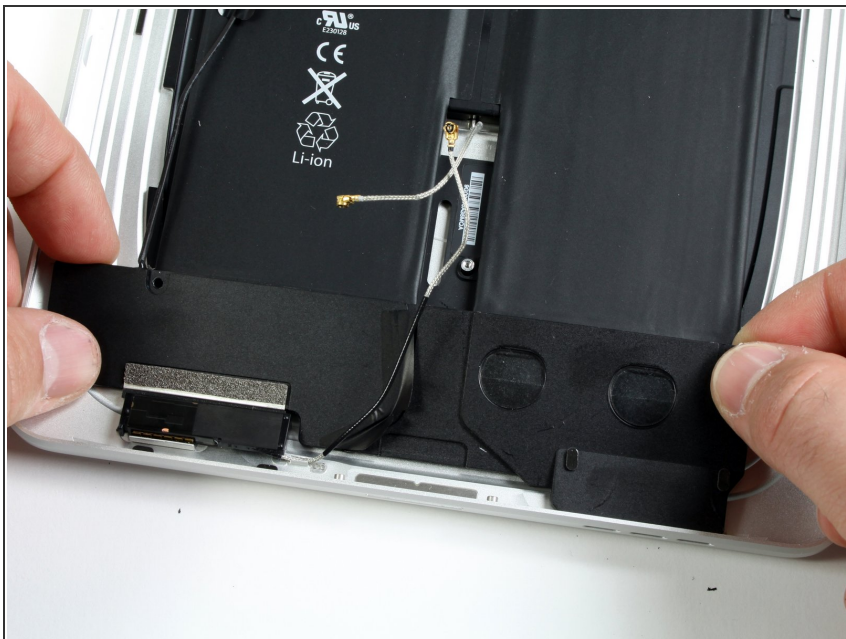
- De-route the Wi-Fi antenna through its channel in the speaker assembly.

Step 19



- Deroute the speaker cable connector through the left side of the rear panel assembly.

Step 20



- Lift the speaker assembly and push it forward until the ports clear the bottom side of the rear panel assembly.
- Remove the speaker assembly out of the rear panel assembly.

To reassemble your device, follow these instructions in reverse order.