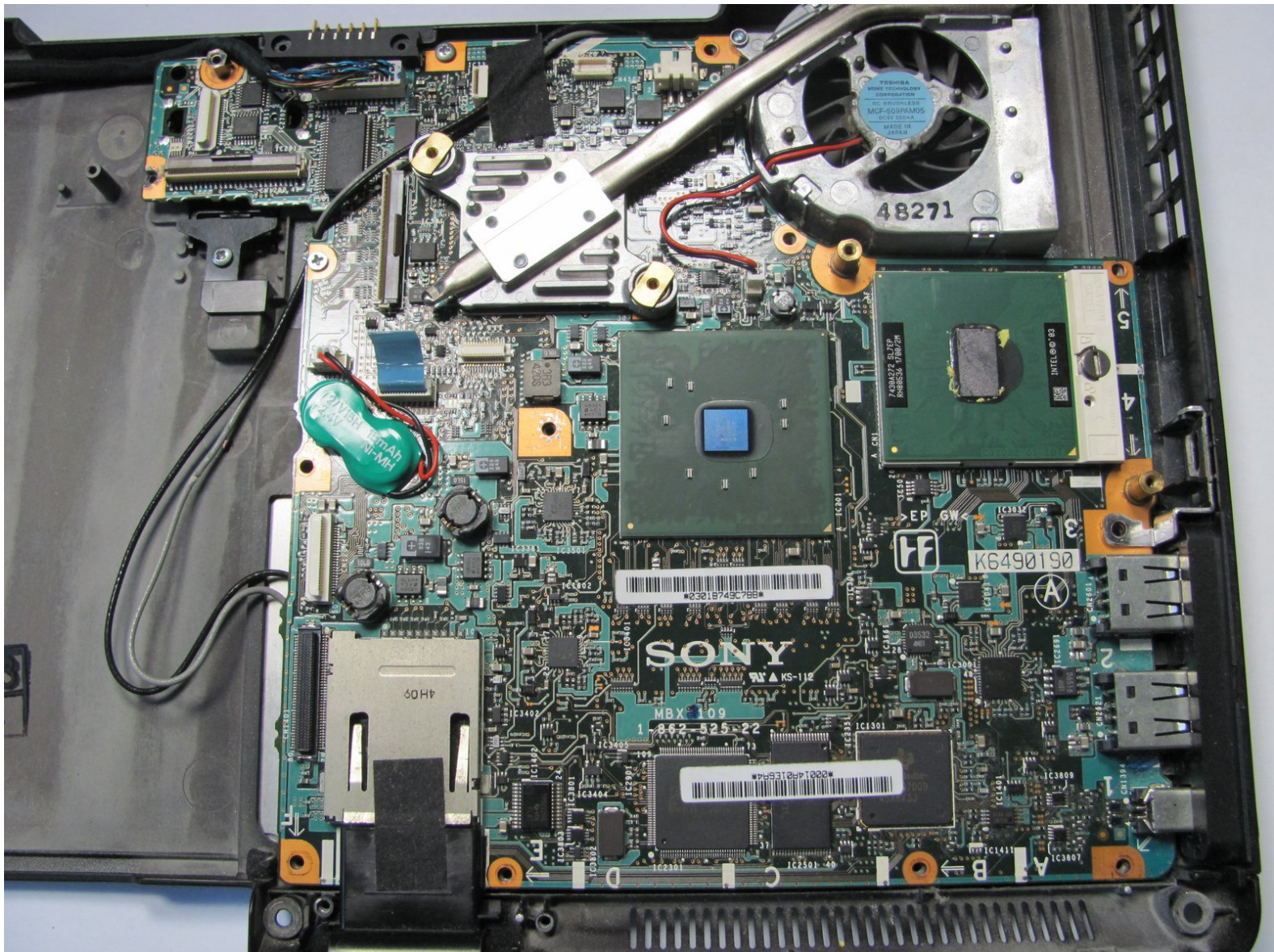




Sony Vaio VGN-S260 Motherboard Replacement

How to replace a Sony Vaio VGN-S260 motherboard.

Written By: Jeffrey Bryan



INTRODUCTION

How to remove the motherboard from the Sony Vaio VGN-S260 laptop.



TOOLS:

- [5mm Nut Driver](#) (1)
 - [Phillips #00 Screwdriver](#) (1)
 - [Spudger](#) (1)
-

Step 1 — Battery



- Flip the laptop over so the Vaio logo is facing down.
- Locate the battery at the top and Find the release and unlock slides on the battery.
- Slide the unlock tab to the unlock position.
- Slide the release tab in the direction of the arrow, i.e. towards the unlock tab.

Step 2



- With the tabs still in the unlock position, slide the battery away from the main case.

Step 3 — Keyboard



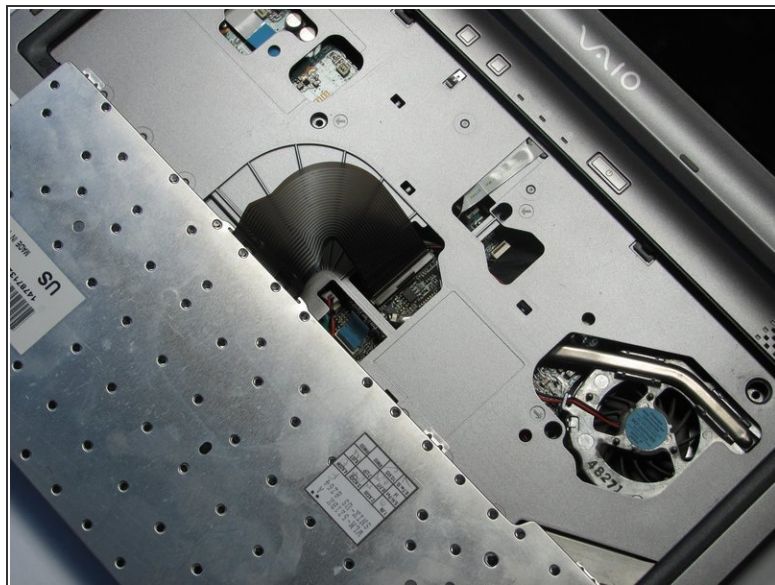
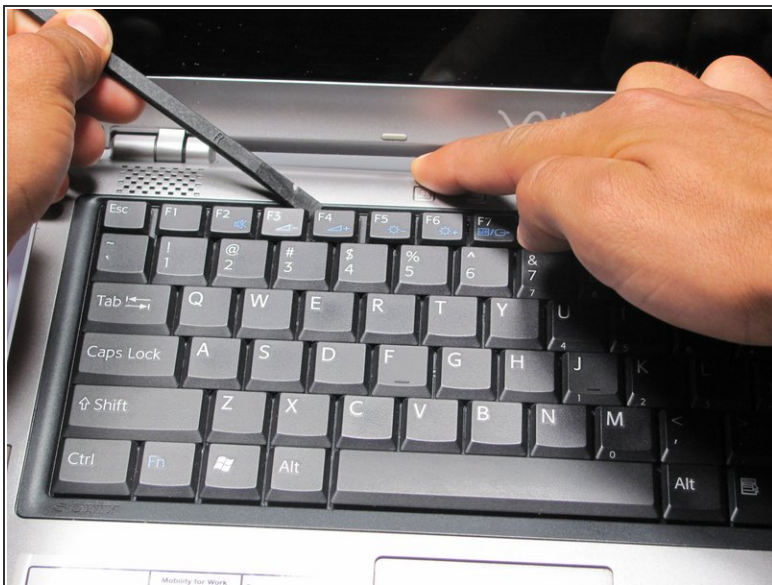
- Flip the computer over so the Vaio logo is facedown.
- Unscrew the 2 screws next to the battery.

Step 4



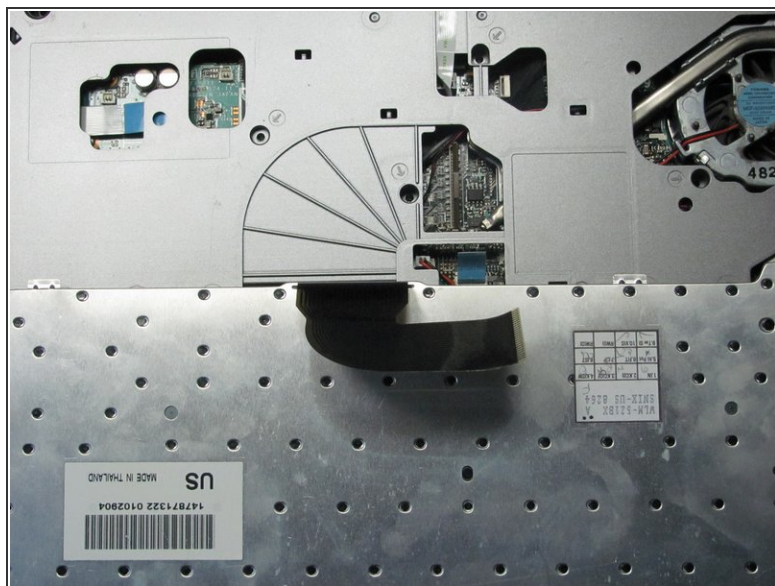
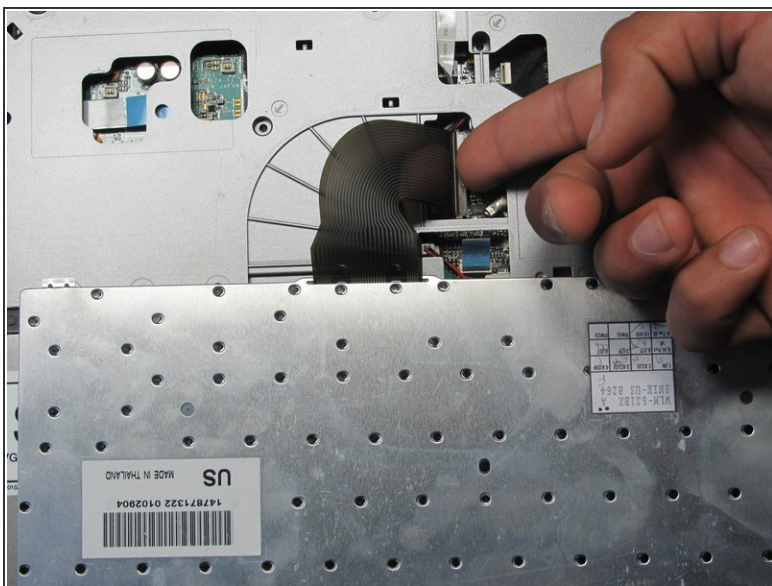
- Flip the computer over again so the Vaio logo is face up.
- Open the lid.

Step 5



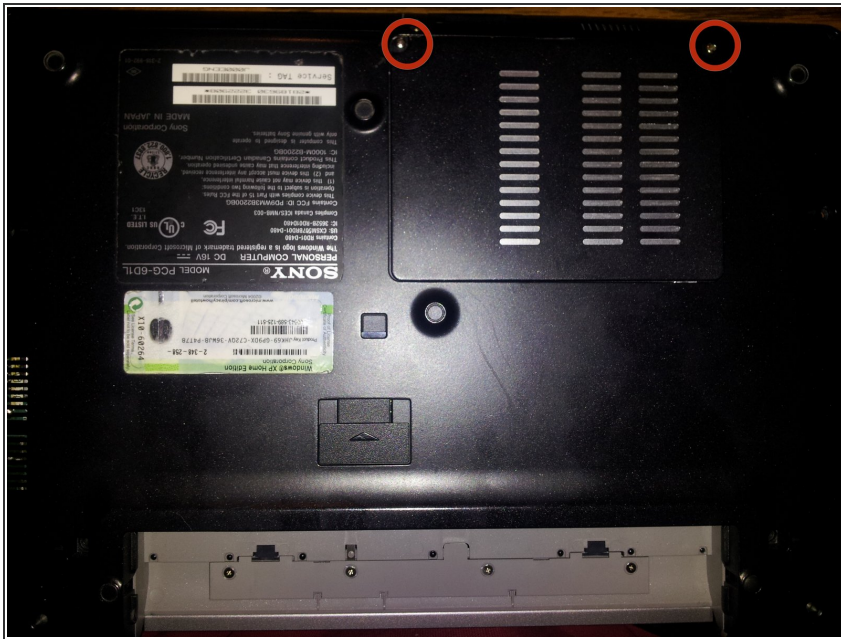
- Press down on the outer gray shell around the keyboard.
 - Use the spudger to gently lift keyboard.
- ⚠ Do not pull up the keyboard too far as it is attached to a ribbon underneath.

Step 6



- Lift up lever underneath the ribbon to detach the keyboard.

Step 7 — Upper Casing



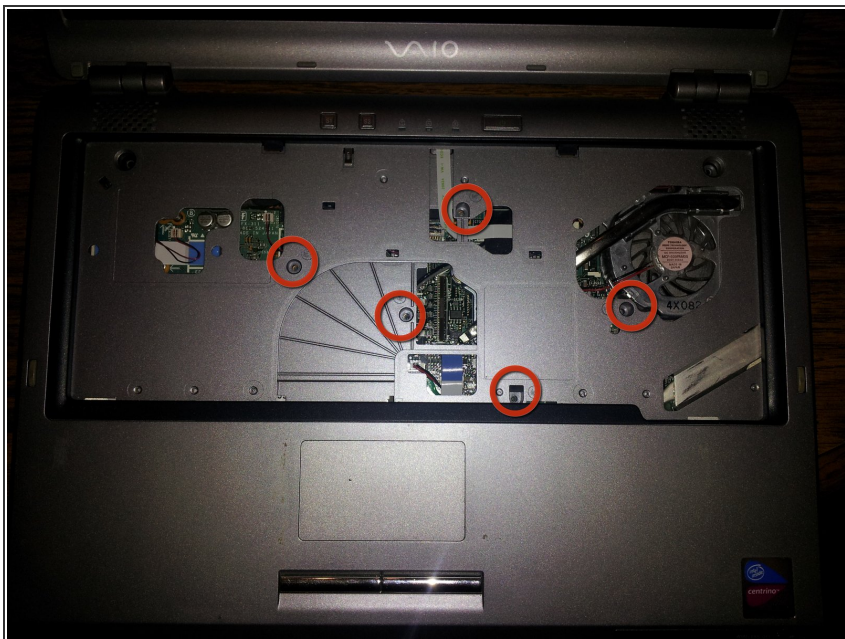
- Remove memory/wireless compartment cover.

Step 8



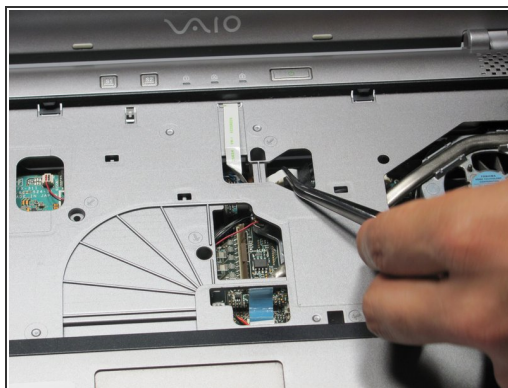
- Flip so the Vaio Logo is face down.
- Locate and remove a total of 8 screws on the bottom.

Step 9



- Find and remove 5 screws (they all have arrows next to them) from cover.

Step 10



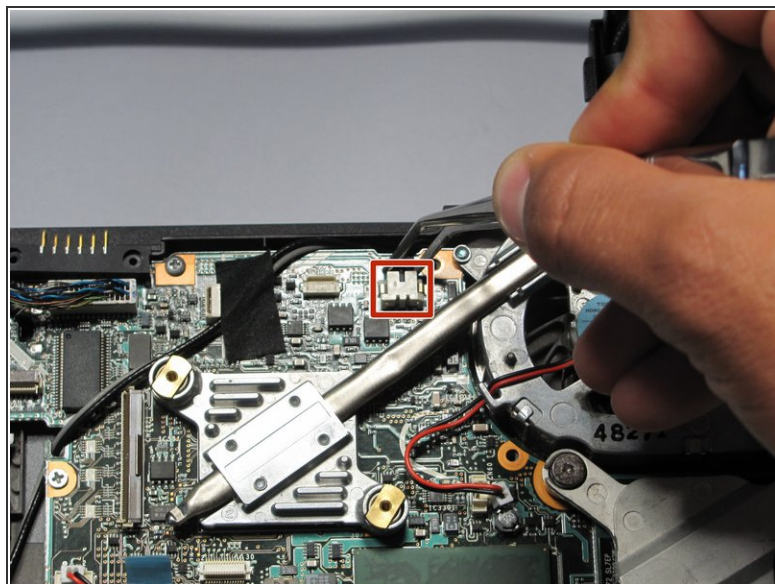
- Flip the laptop over so the Vaio logo is face up.
- Use the spudger to pop up the upper casing.
- ⚠ Do not lift too much as the upper casing is attached to wires underneath.
- Remove the wires that are attaching the upper casing to the motherboard.

Step 11



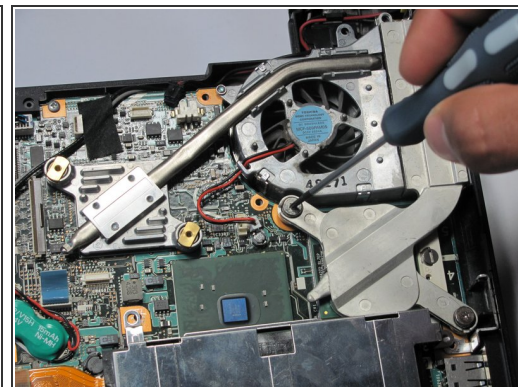
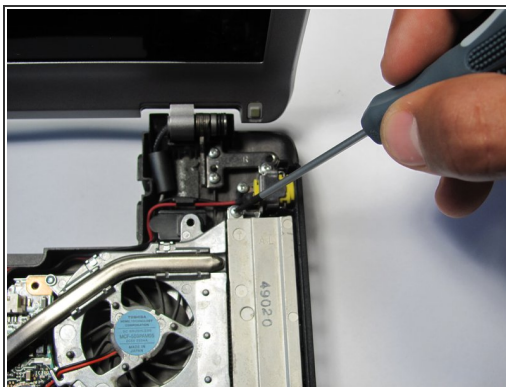
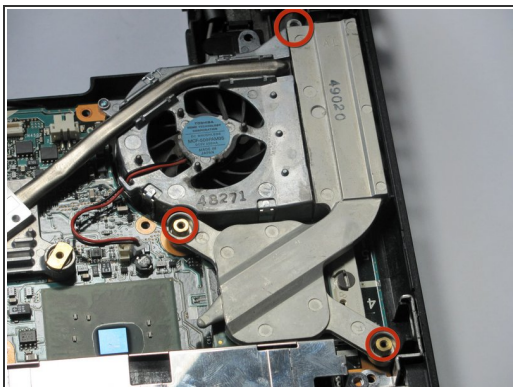
- Remove the upper casing.

Step 12 — Power Adapter



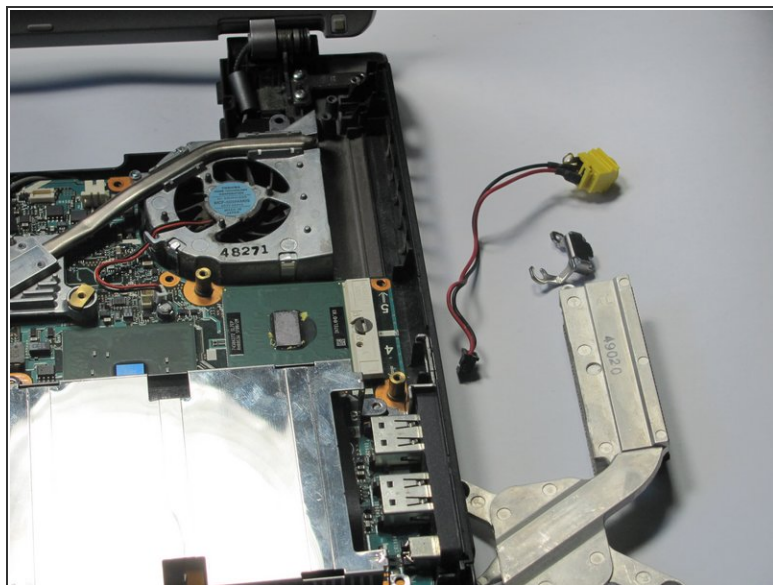
- Locate the yellow power adapter.
- Follow its wire to white logic board connector.
- Pull out the wire from white logic board connector.

Step 13



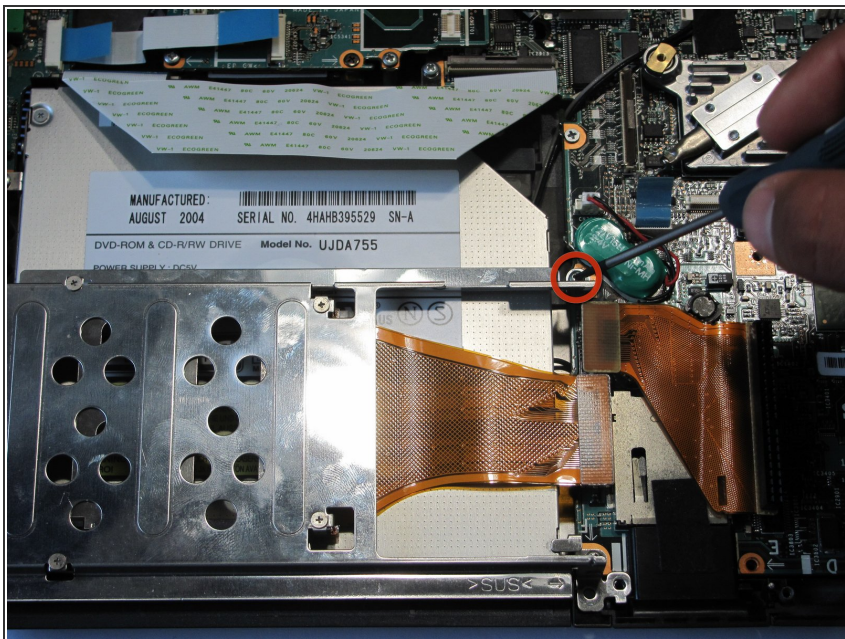
- Locate the screws on the fan filter casing.
- Remove these screws.

Step 14



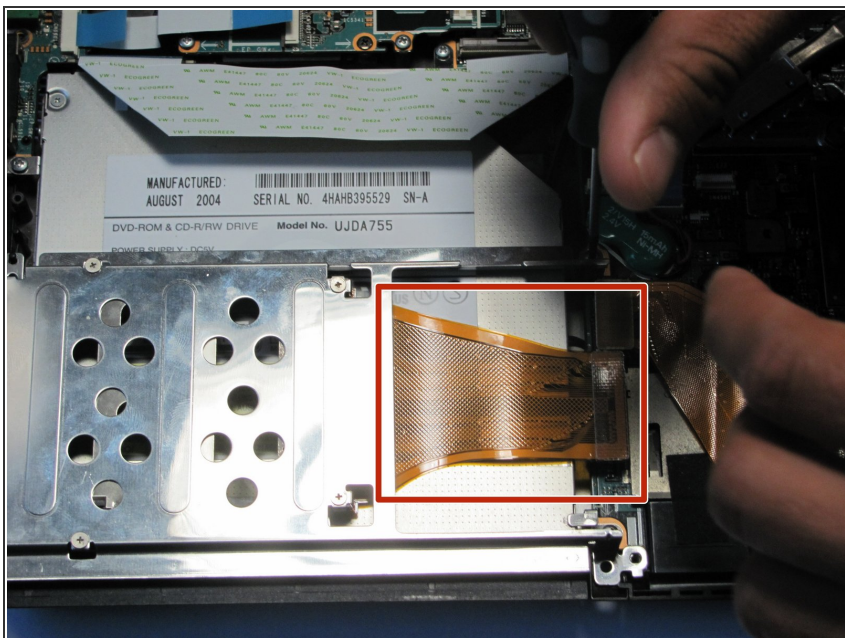
- Remove the screw next to the yellow power adapter.
- Lift out power adapter and fan filter.

Step 15 — Optical Drive



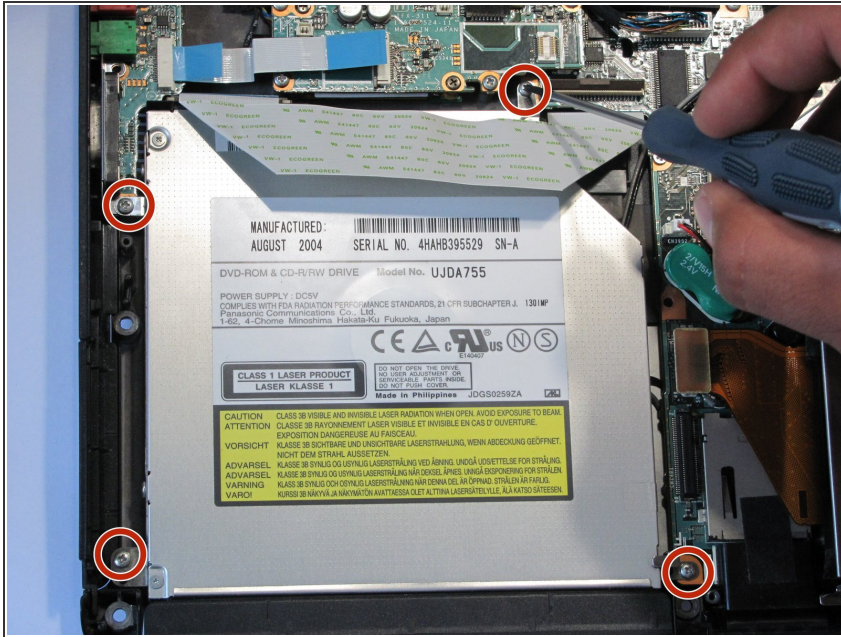
- Remove the screw holding the optical drive casing to the logic board.

Step 16



- Locate ribbon connecting optical drive case to logic board.
- Pop off the ribbon.
- Remove the metal PC-Card cage.

Step 17



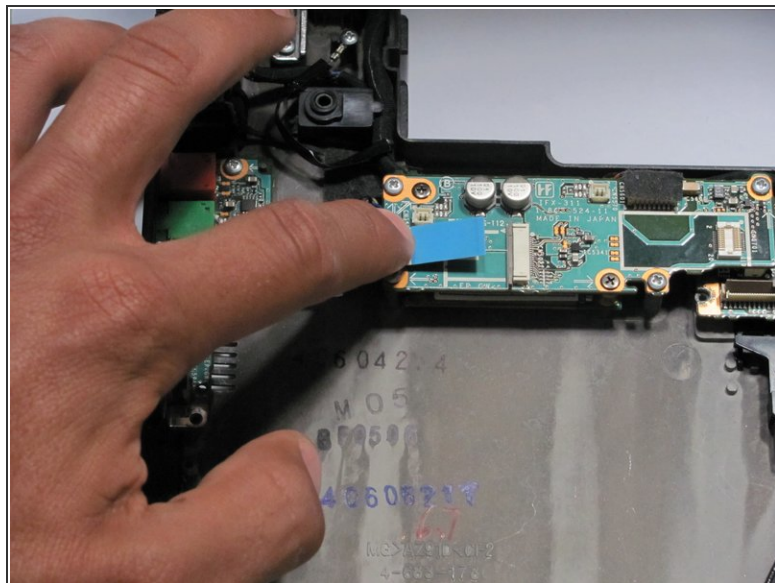
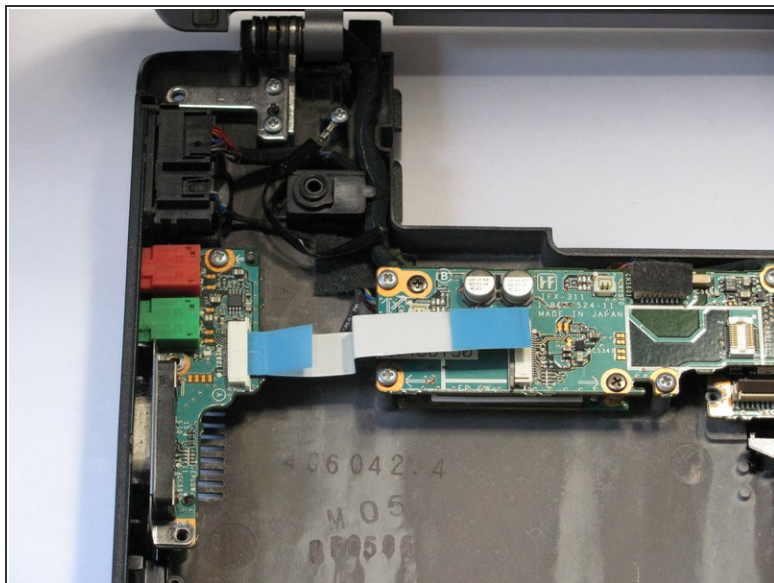
- Remove the four screws holding the optical drive to the logic board.

Step 18



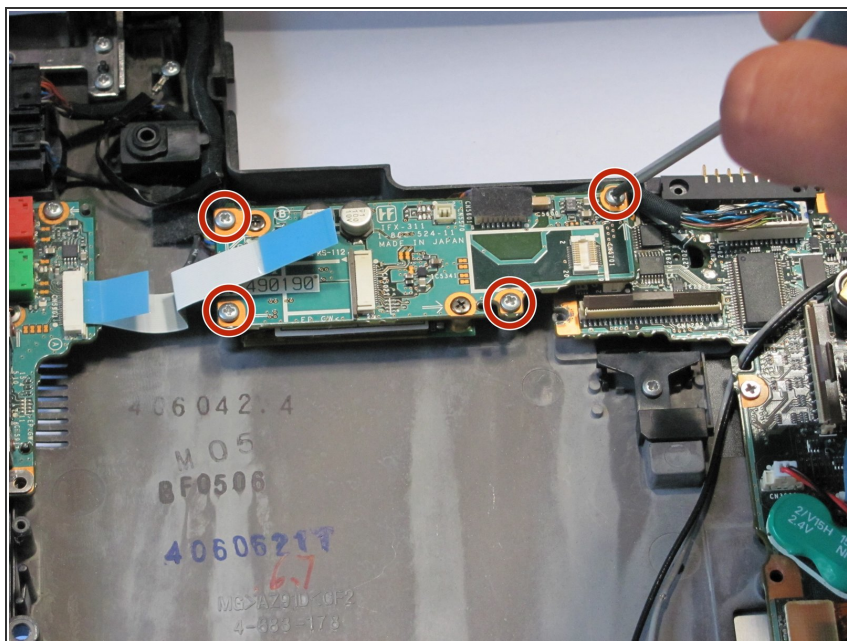
- Locate brown locking tab above optical drive.
- Lift up on brown locking tab until ribbon is loose.
- Gently slide out and remove the optical drive from the computer.

Step 19 — Ethernet Ports



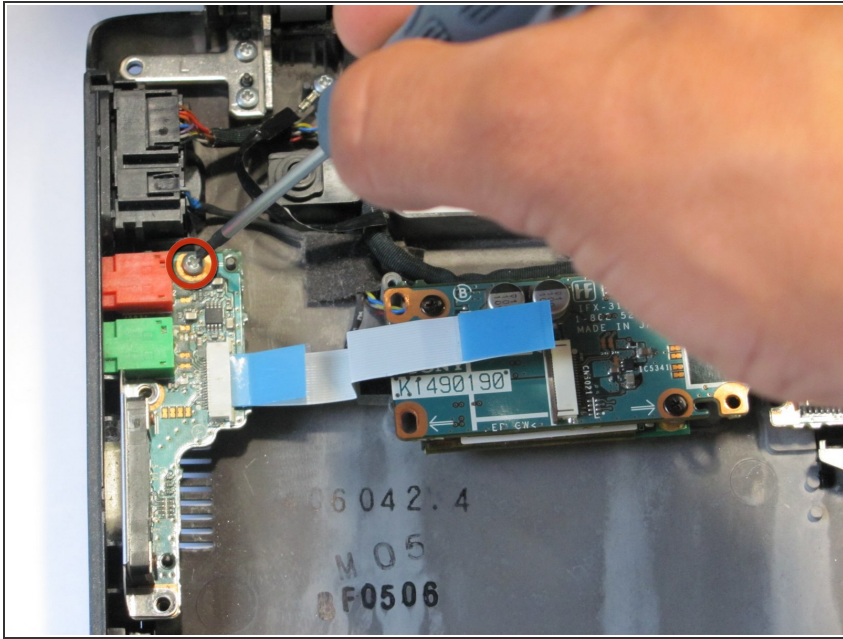
- Remove the blue ribbon from the Ethernet Circuit Board.

Step 20



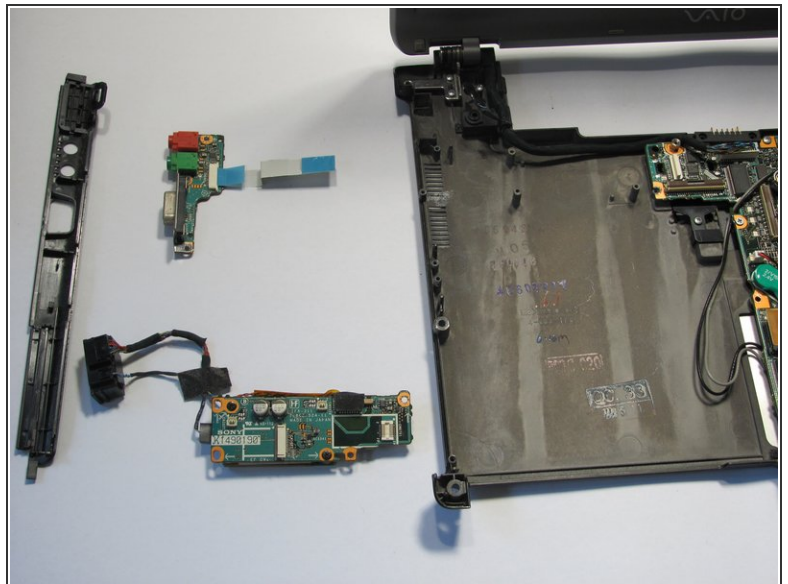
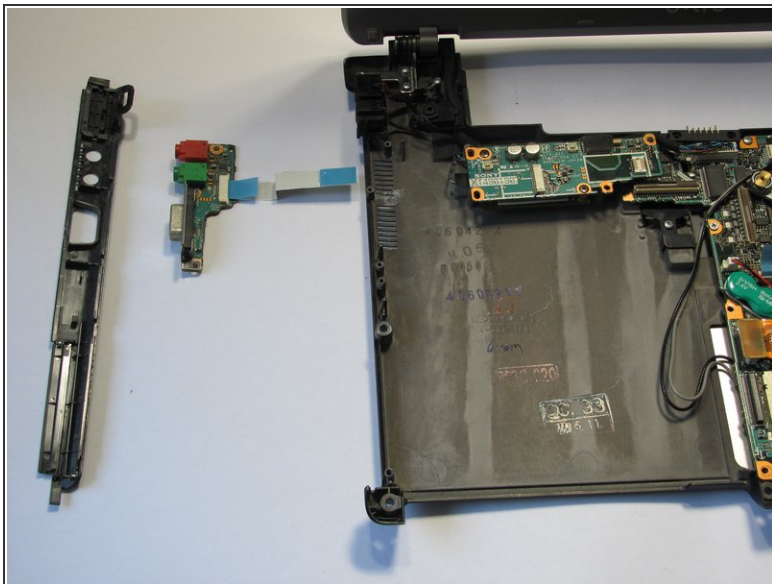
- Remove the screws near the Ethernet Port circuit board.

Step 21



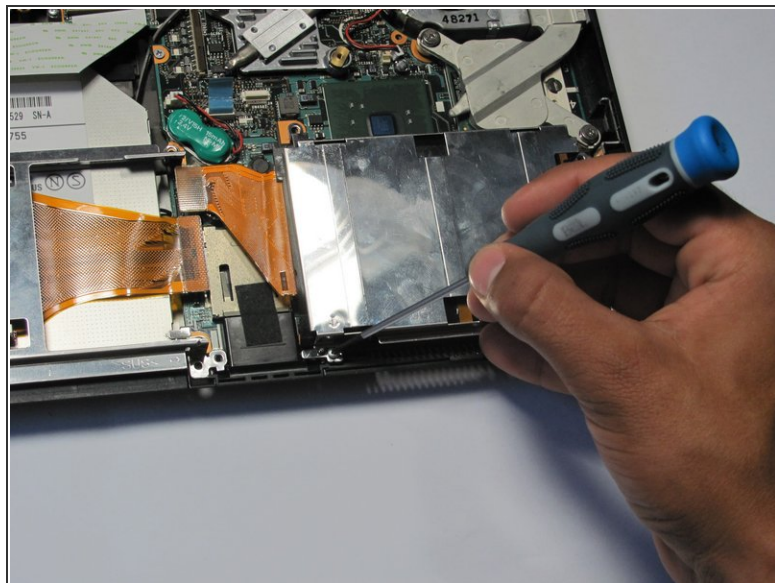
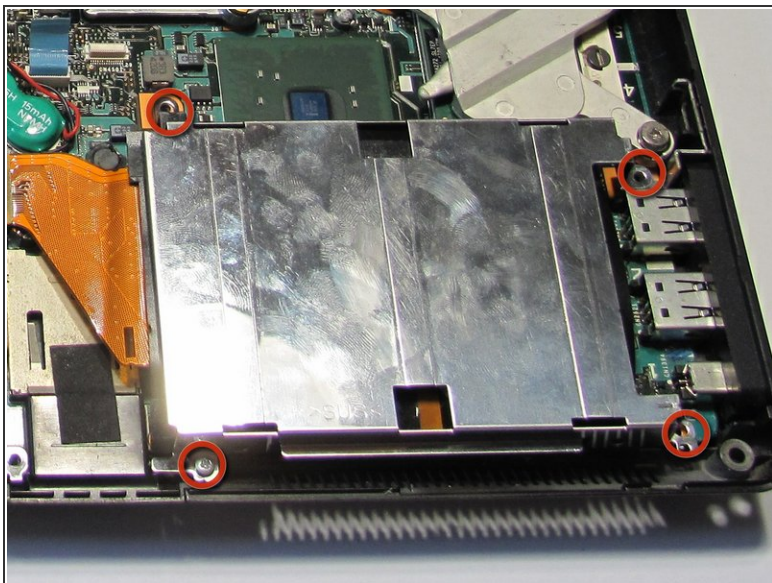
- Remove the screws for the second ethernet circuit board.

Step 22



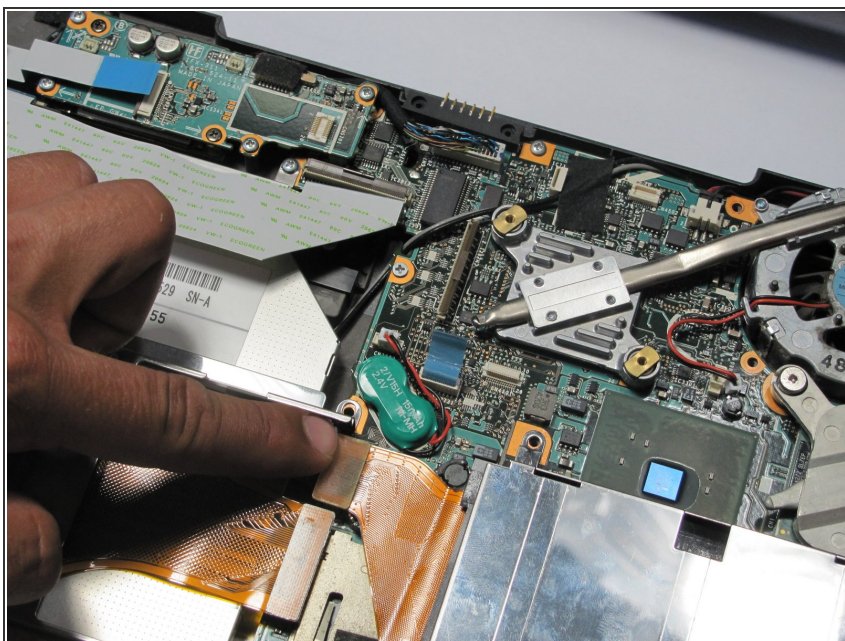
- Remove the ethernet ports.

Step 23 — Hard Drive



- Remove the screws holding the hard drive casing in place.

Step 24



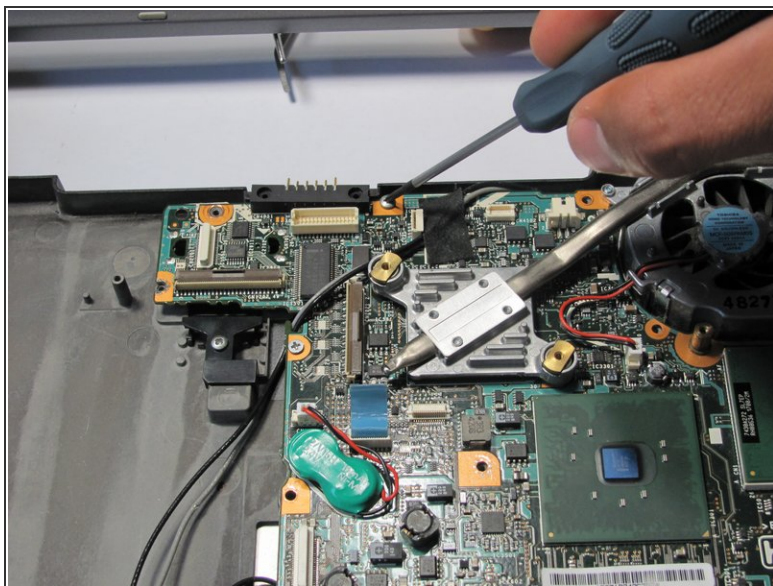
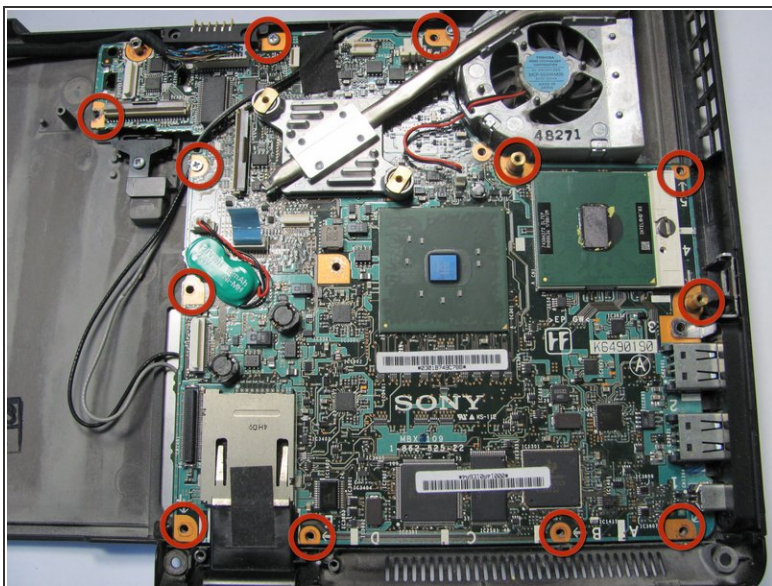
- Find orange ribbon that is connected to the hard drive.
- Find the holder of the ribbon and pop the ribbon off from it.

Step 25



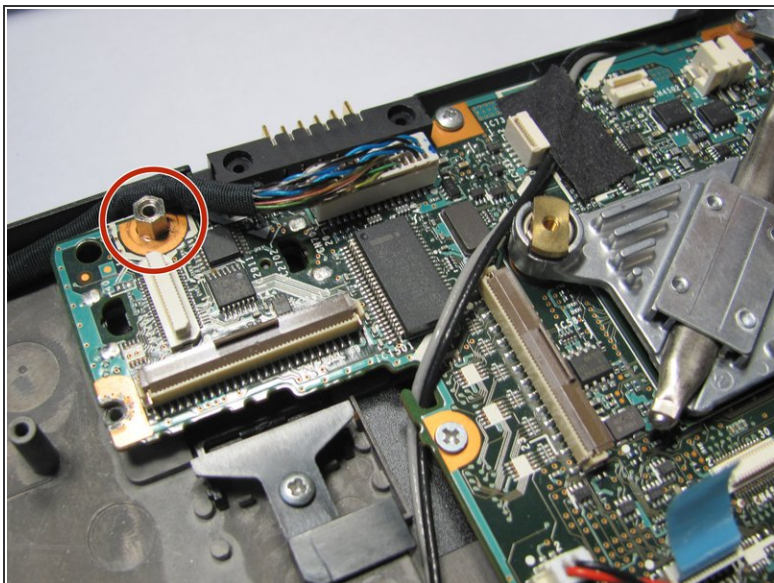
- Remove the casing and the orange ribbon.

Step 26 — Motherboard



- Remove screws on the motherboard.

Step 27



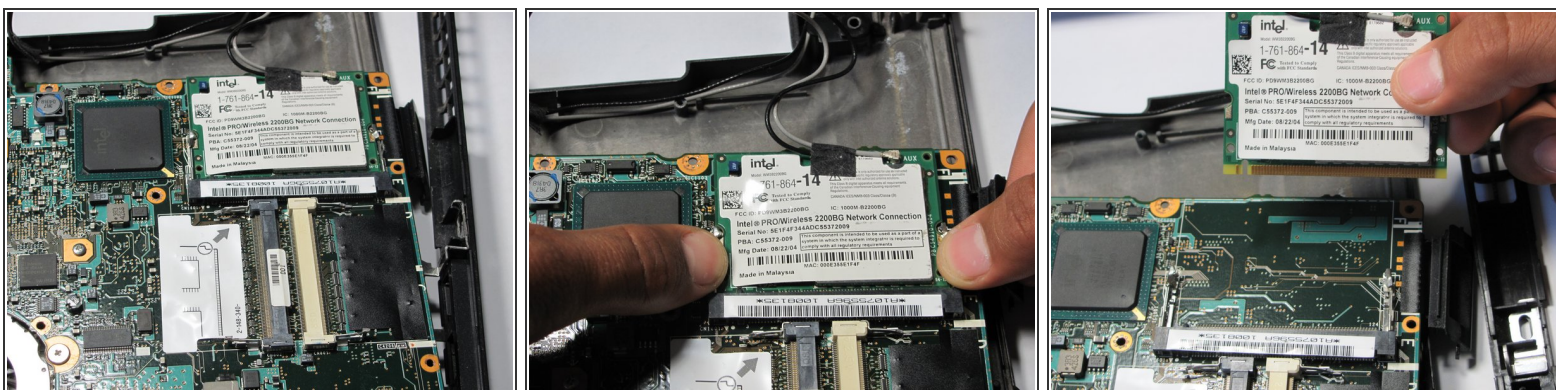
- Remove the nut using a 5mm nut driver.
- ⓘ Using a magnetic screwdriver handle will also work as well.

Step 28




- Remove the LCD display ribbon with a nylon spudger.
- ⚠ This is difficult to remove.

Step 29



- Gently lift the motherboard from the laptop.

 The motherboard will be attached to the network wireless chip, which is also attached to the base of the laptop.

- Remove the chip by popping the tabs on the side.
- Slide out the network card.
- You are now free to take the motherboard away from the base.

To reassemble your device, follow these instructions in reverse order.