



# JBL On Stage II Power Button Replacement

Replace the button that enables musical magic to stream.

Written By: Janessa D Cabrera



---

# INTRODUCTION

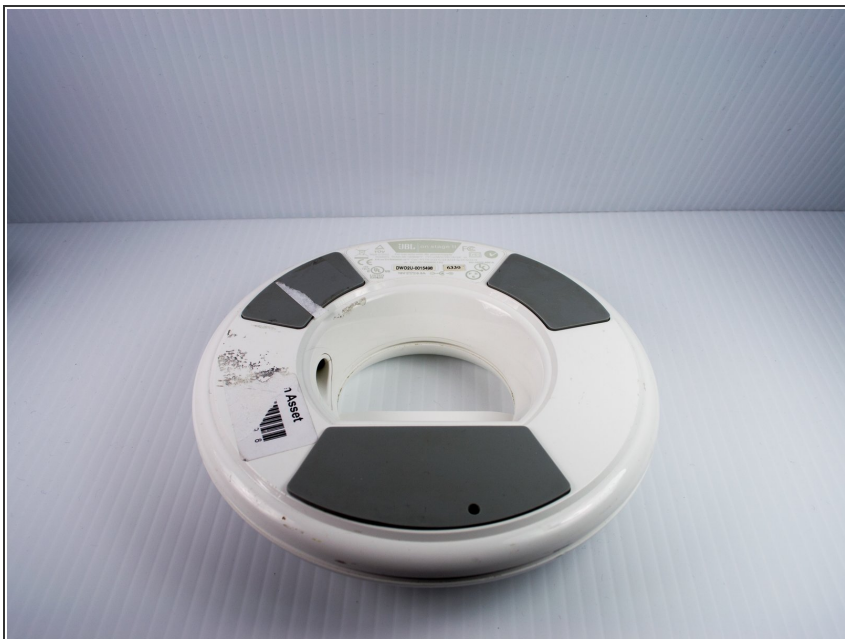
This guide shows you how to replace the spring on the power button.



## TOOLS:

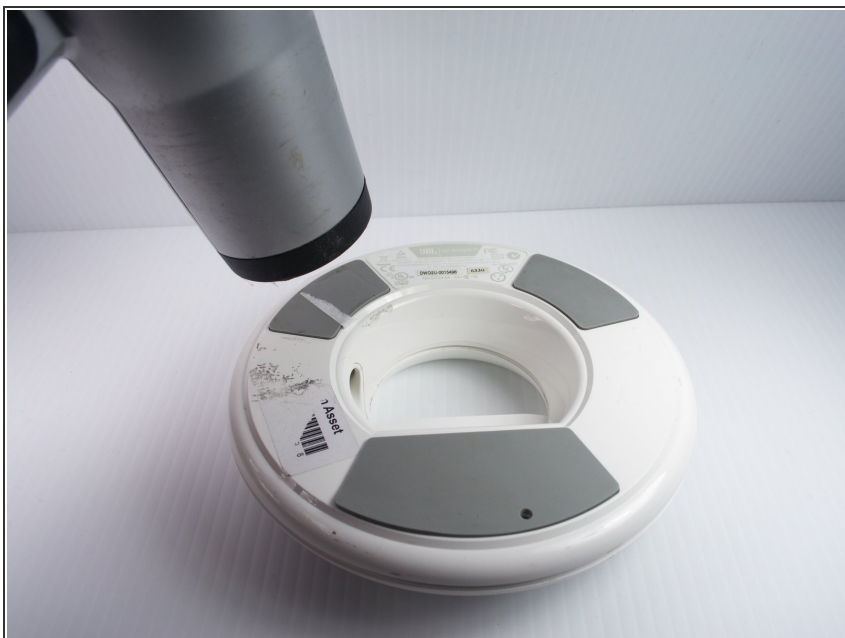
- [Heat Gun](#) (1)
  - [T-10 Torx Screwdriver](#) (1)
  - [Tweezers](#) (1)
-

## Step 1 — Cracking the Case



- Turn the device upside down so that the three rubber pads are facing up.

## Step 2



- Use a heat gun (set to low) to apply heat to one of the rubber pads until you can easily remove the pad. This step takes around 5-7 minutes.

### Step 3



- Remove the heated rubber pad with a plastic opening tool.
- Repeat steps 2 and 3 for the two remaining rubber pads.

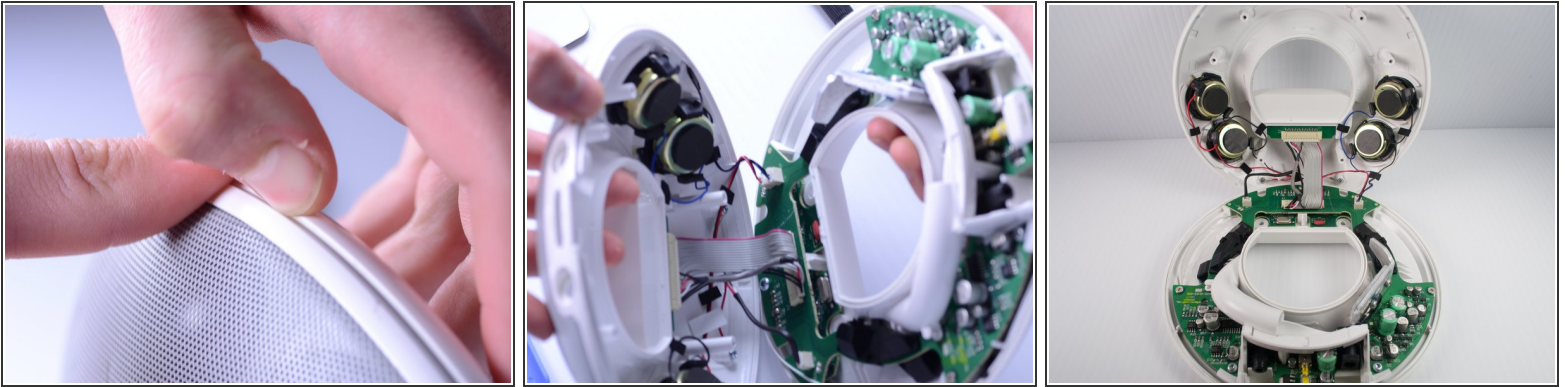
### Step 4



- Remove the six 1cm T-10 torx screws on the bottom of the device (found under the rubber pads) using a T-10 Torx screwdriver.



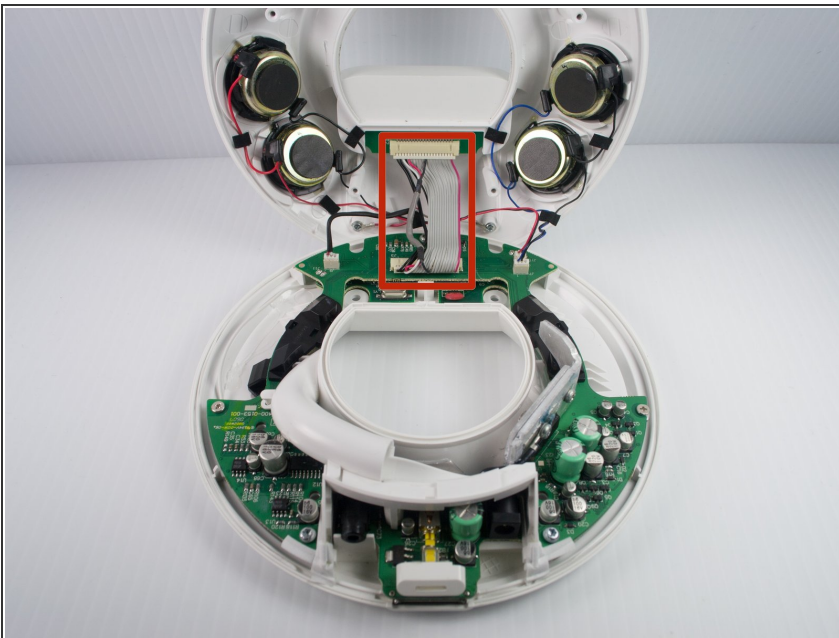
## Step 5



- Open the device along its seam.

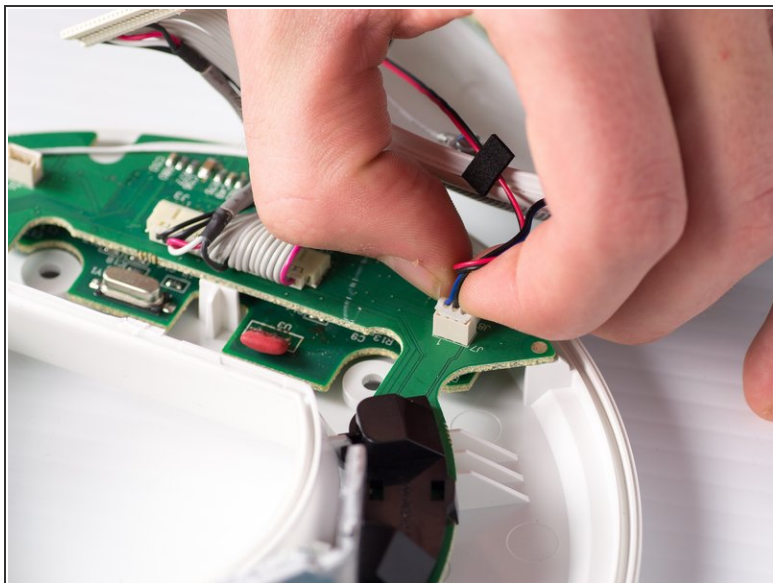
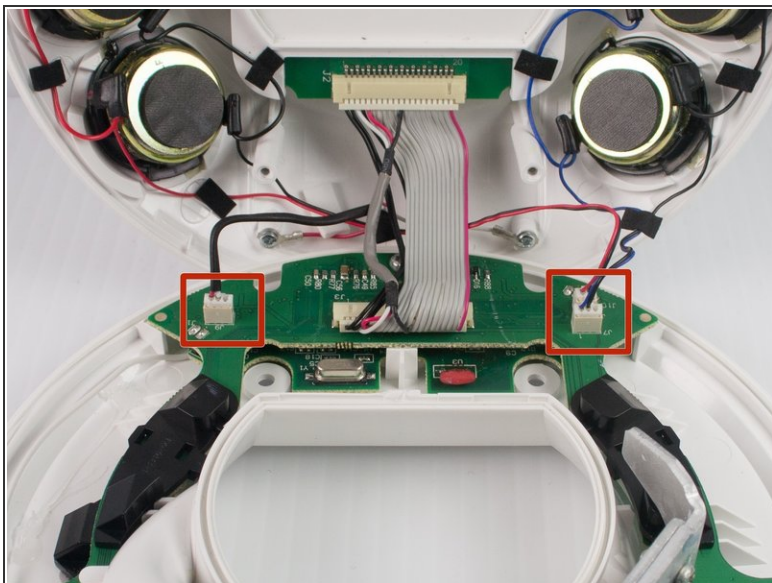
⚠ Be careful when separating the device because there are wires connecting the two separate halves.

## Step 6



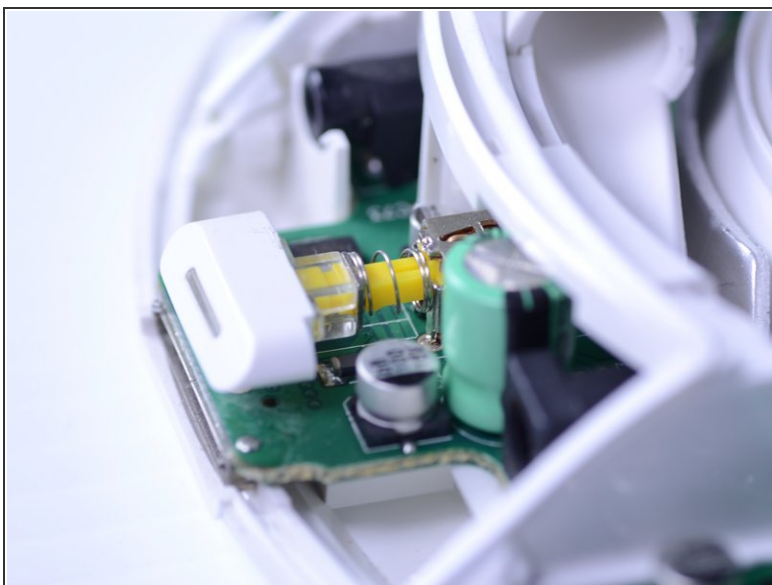
- Disconnect the ribbon cable connector from the top half of the device by pulling outward and parallel to the connecting pins.

## Step 7



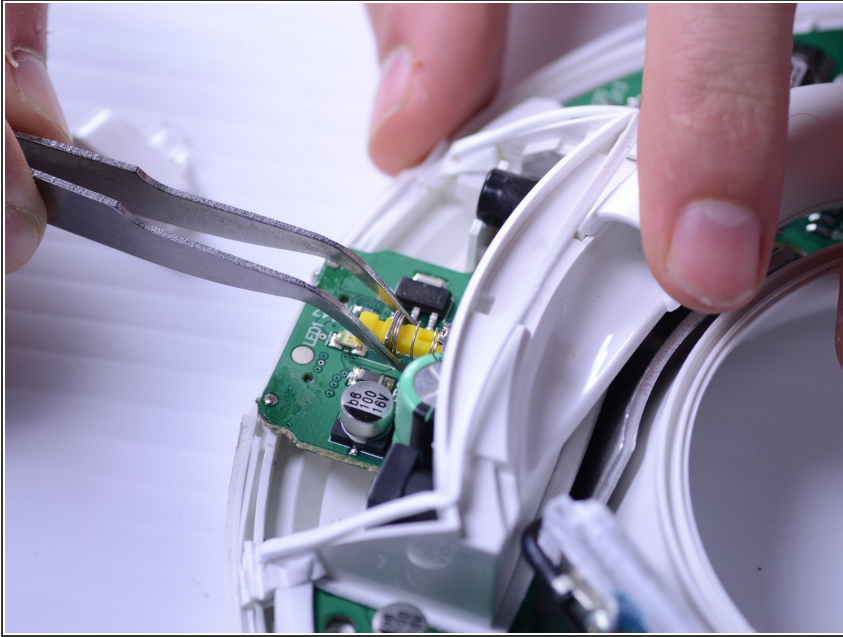
- Locate and disconnect the two molex connectors found on either side of the ribbon cable connector on the bottom half of the device.

## Step 8 — Power Button



- Pull the plastic button off the post.

## Step 9



- Remove the metal U-clip (compressing the spring) with tweezers.

To reassemble your device, follow these instructions in reverse order.