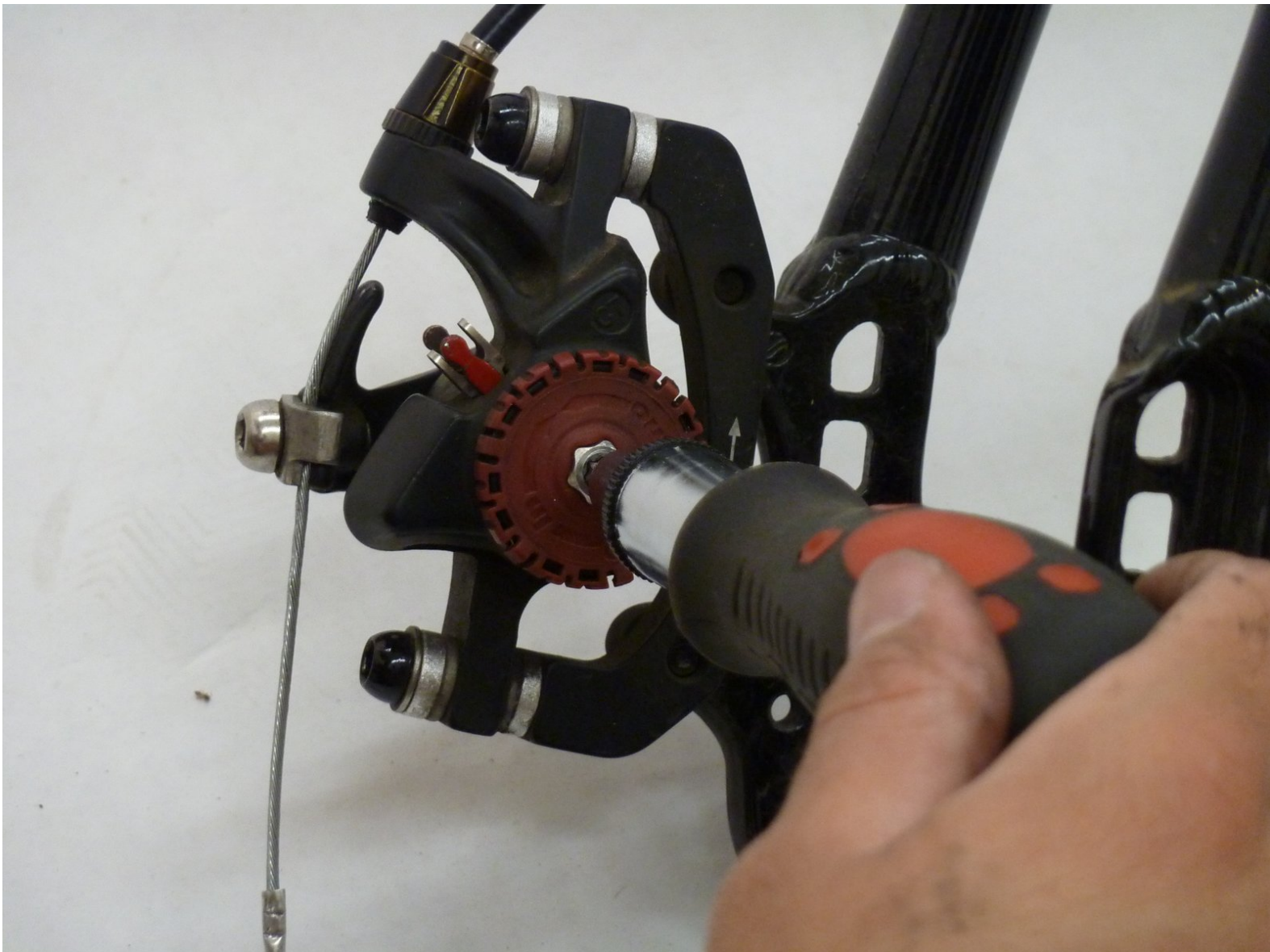




Triace A310 Brake Pad Replacement

This guide will show you how to replace your brake pads.

Written By: Ben Hartinger



INTRODUCTION

When your brakes get worn down, they need to be replaced. This will help keep you safe as you ride.



TOOLS:

- [T25 Torx Screwdriver](#) (1)
-

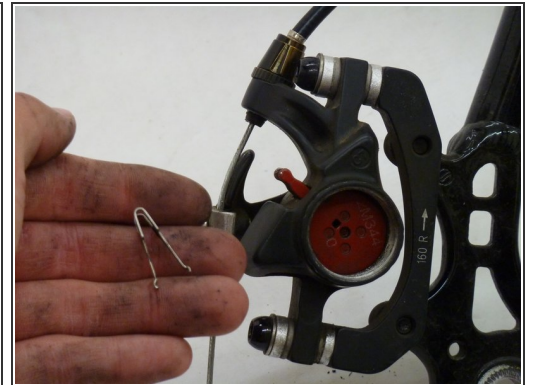
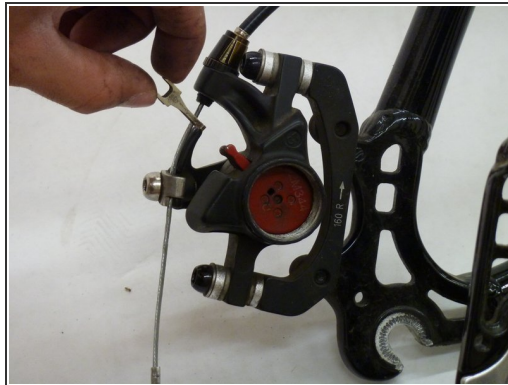
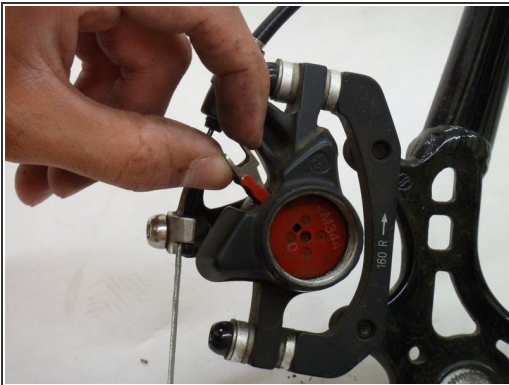
Step 1 — Brake Pad



i Note: In this repair guide the pictures are taken with the tire removed so that it is easier to follow our steps. However, removing the tire is not necessary to replace the brake pads.

- Unscrew the brake pad cap with a T25 screwdriver bit.

Step 2



- Grab and pull out the spring between the brake pads.

Step 3



- Slide out the back brake pad first. Then slide out the front brake pad.

Step 4



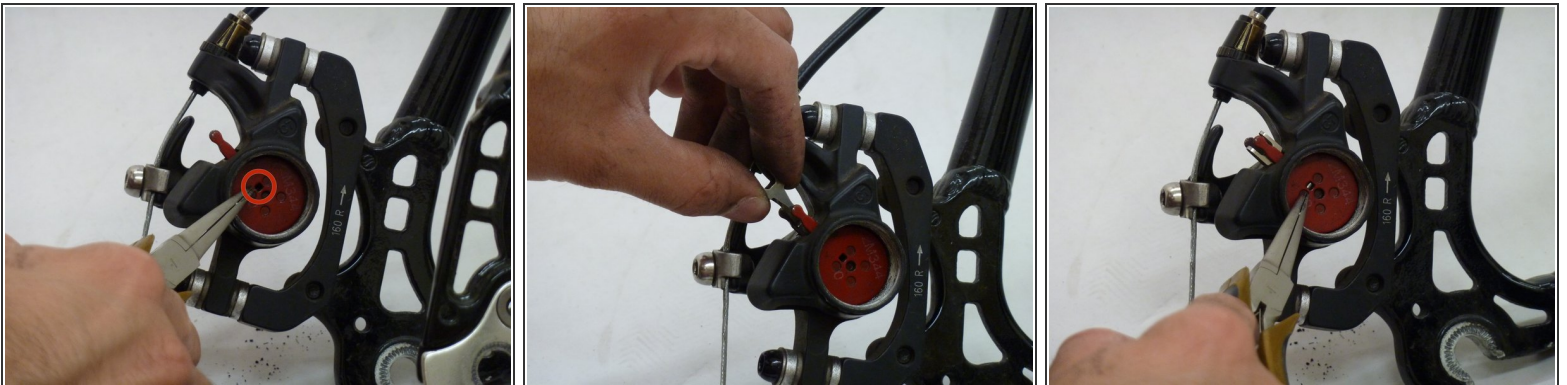
- Slide in the new brake pads with the first going in the front.

Step 5



- Then slide in the other pad in the back.
- ☑ Make sure each brake pad is facing the right way.

Step 6



- Push the spring back into place between the two brake pads so the spring is visible in the hole shown here.

Step 7




- Screw the brake pad cap back on.

Step 8



- Adjust the red knob as necessary (directions are noted on the knob).

 Be sure to test your brakes thoroughly in a safe, low-speed environment.

Now your bike should actually be able to stop.