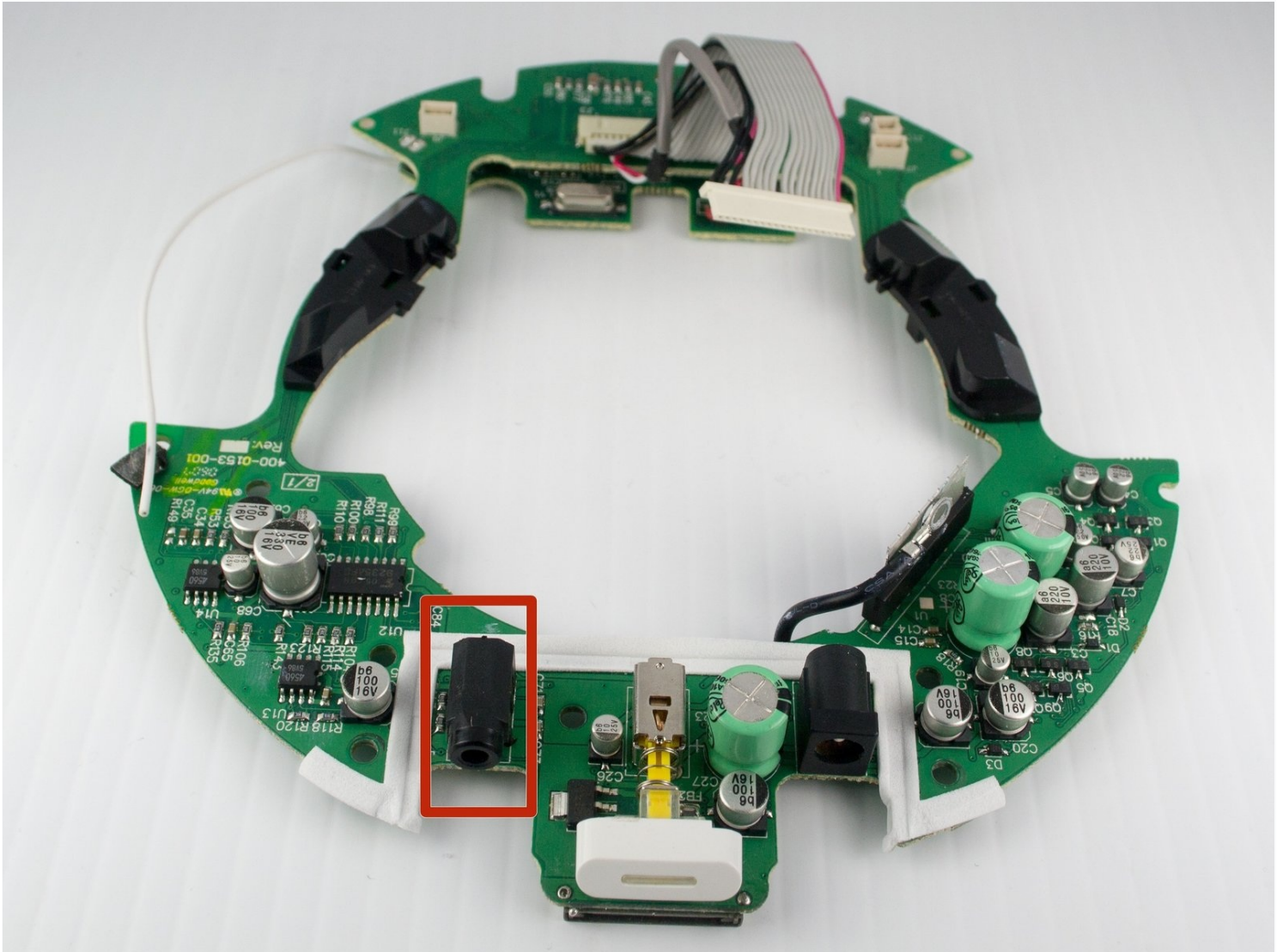




JBL On Stage II Auxiliary Jack Replacement

To complete this guide, you will need to...

Written By: Jared Everingham



INTRODUCTION

To complete this guide, you will need to disassemble your device and use a soldering iron to replace the jack.

TOOLS:

[T-10 Torx Screwdriver](#) (1)

[.25" Socket Wrench](#) (1)

[10 Torx Screwdriver](#) (1)

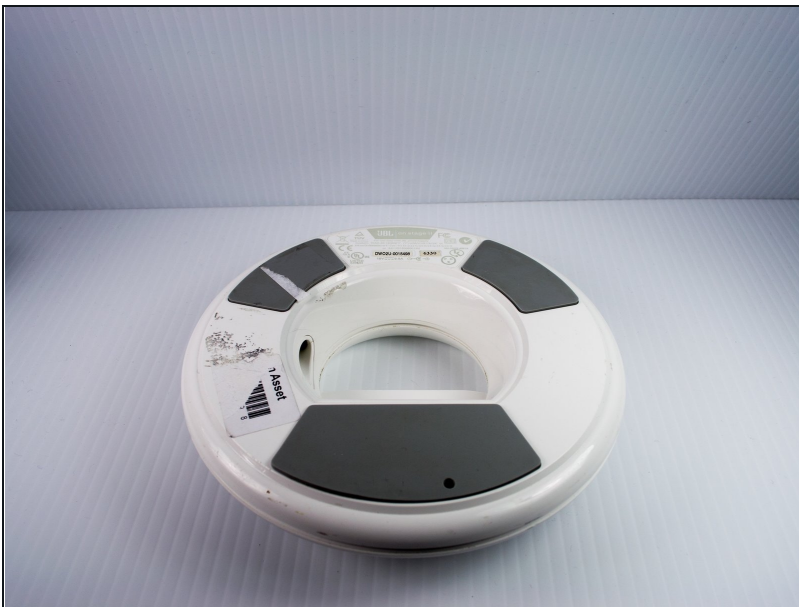
[Socket 5.5 mm](#) (1)

[Phillips #1 Screwdriver](#) (1)

[Flush Cutter](#) (1)

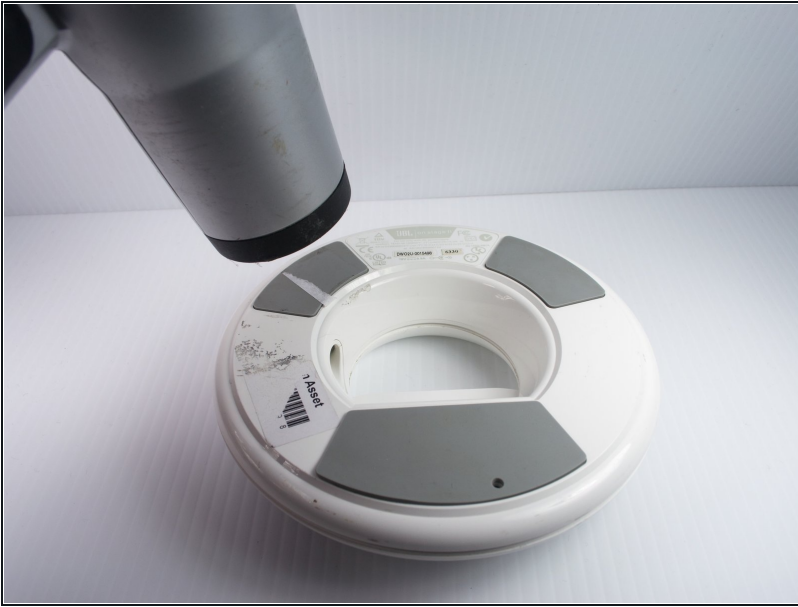
[Soldering Workstation](#) (1)

Step 1 — Cracking the Case



- Turn the device upside down so that the three rubber pads are facing up.

Step 2



- Use a heat gun (set to low) to apply heat to one of the rubber pads until you can easily remove the pad. This step takes around 5-7 minutes.

Step 3



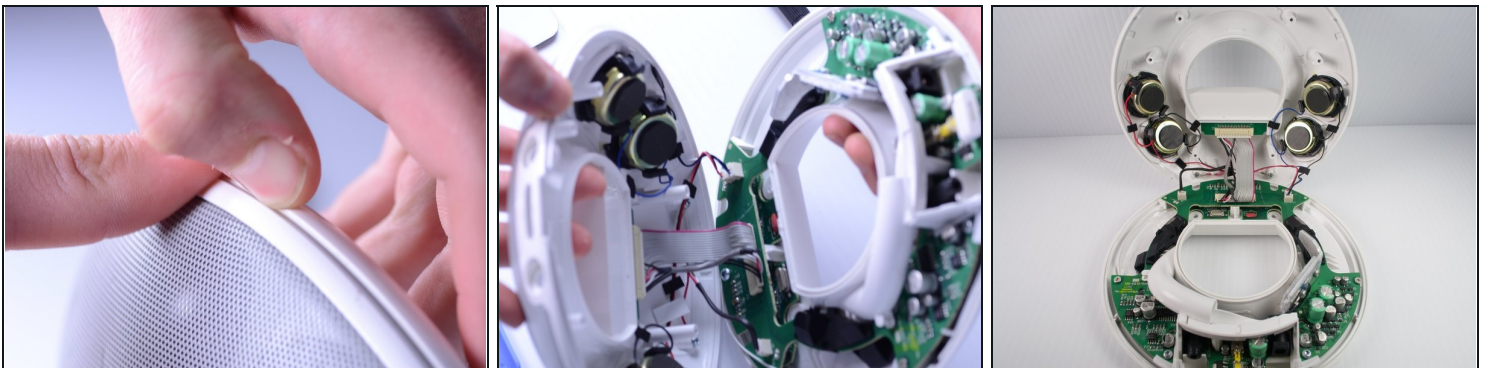
- Remove the heated rubber pad with a plastic opening tool.
- Repeat steps 2 and 3 for the two remaining rubber pads.

Step 4



- Remove the six 1cm T-10 torx screws on the bottom of the device (found under the rubber pads) using a T-10 Torx screwdriver.

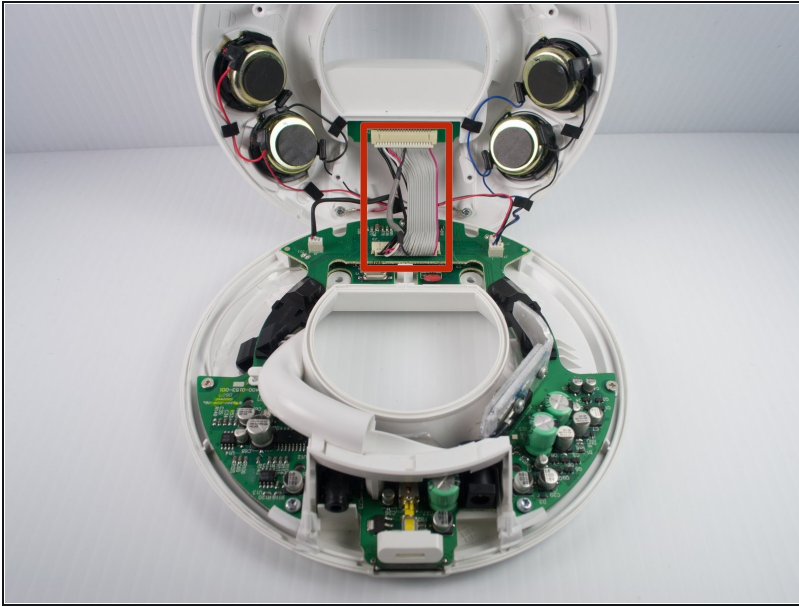
Step 5



- Open the device along its seam.

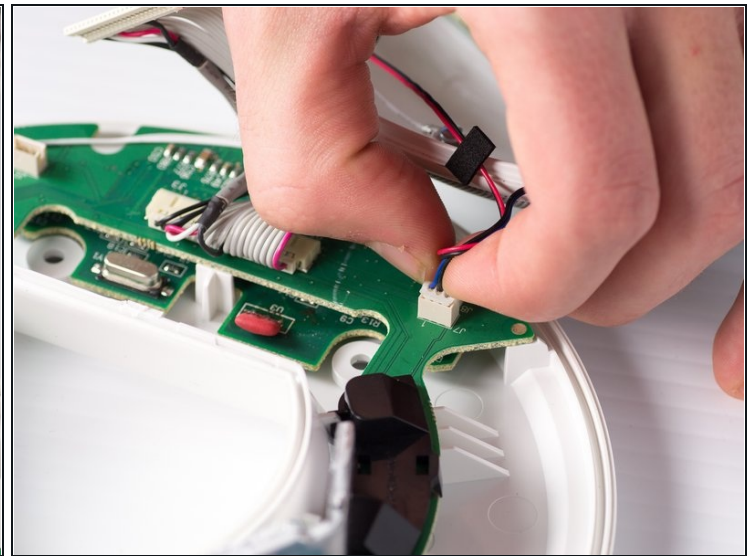
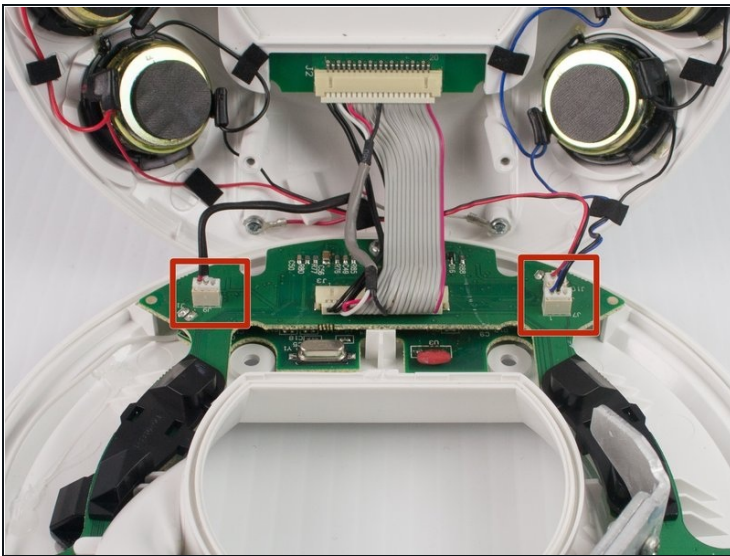
⚠ Be careful when separating the device because there are wires connecting the two separate halves.

Step 6



- Disconnect the ribbon cable connector from the top half of the device by pulling outward and parallel to the connecting pins.

Step 7



- Locate and disconnect the two molex connectors found on either side of the ribbon cable connector on the bottom half of the device.

Step 8 — Circuit Board



- Remove the three 1 cm T-10 Torx screws.

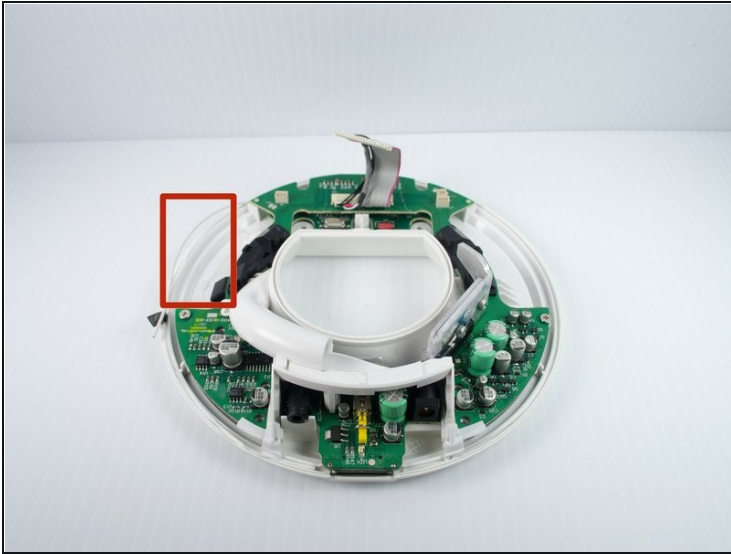
Step 9



- Carefully press out the white base tube and push up on the circuit board.

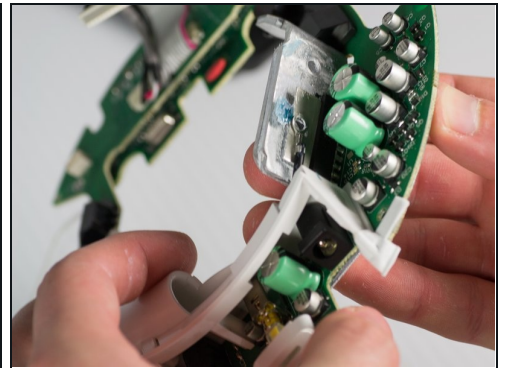
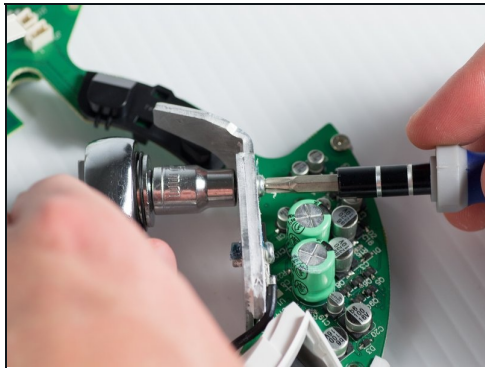
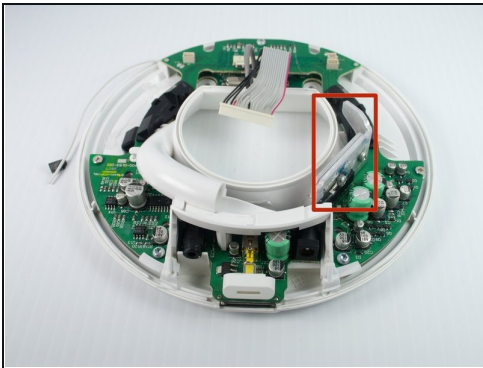
⚠ Note that there is a small wire connecting the circuit board to the base.

Step 10



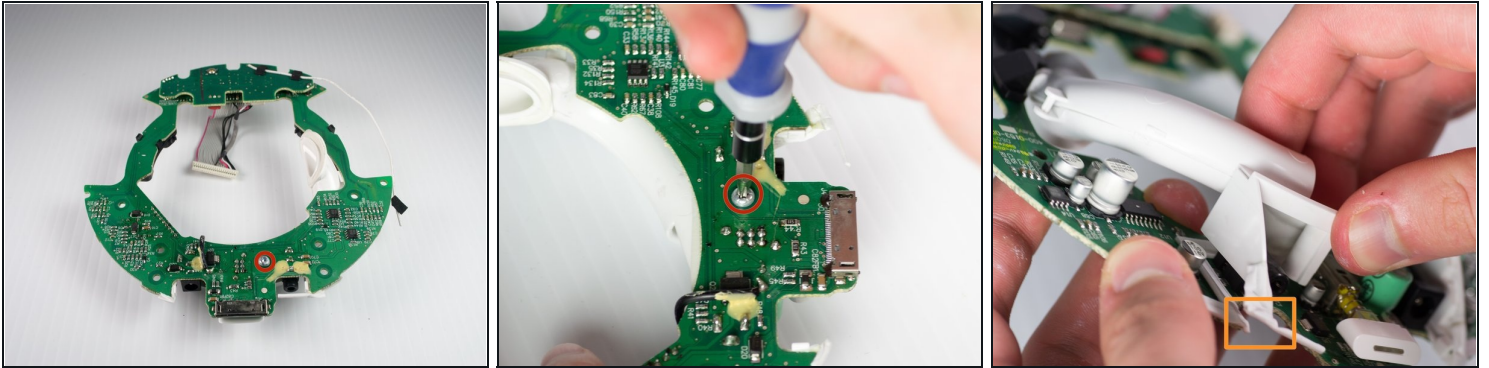
- Pull the white wire out of the hot glue.

Step 11



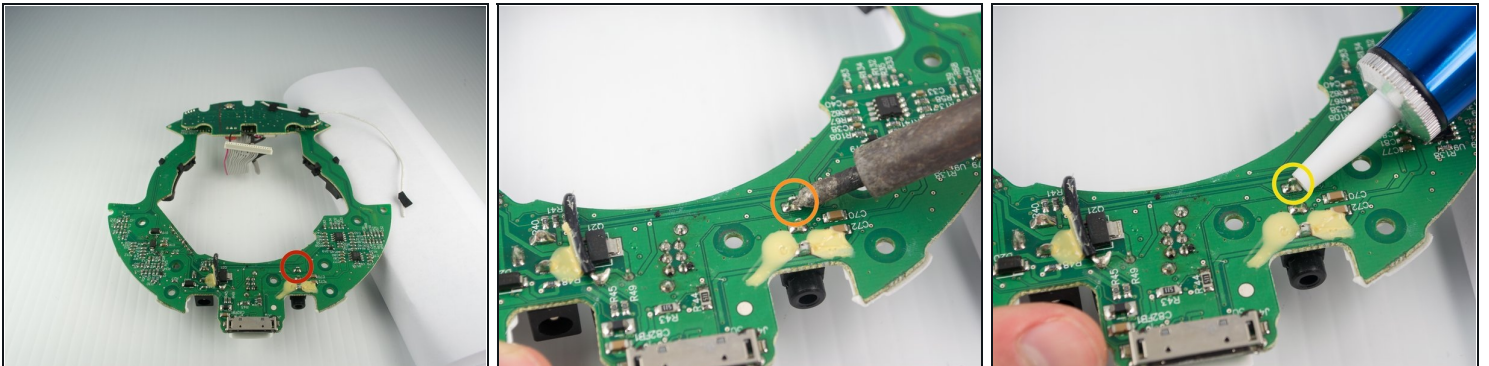
- Unbolt the heatsink with a 5.5-mm socket and a Phillips PH1 screwdriver.
- Remove the heat sink; it should detach from the bottom of the device.

Step 12



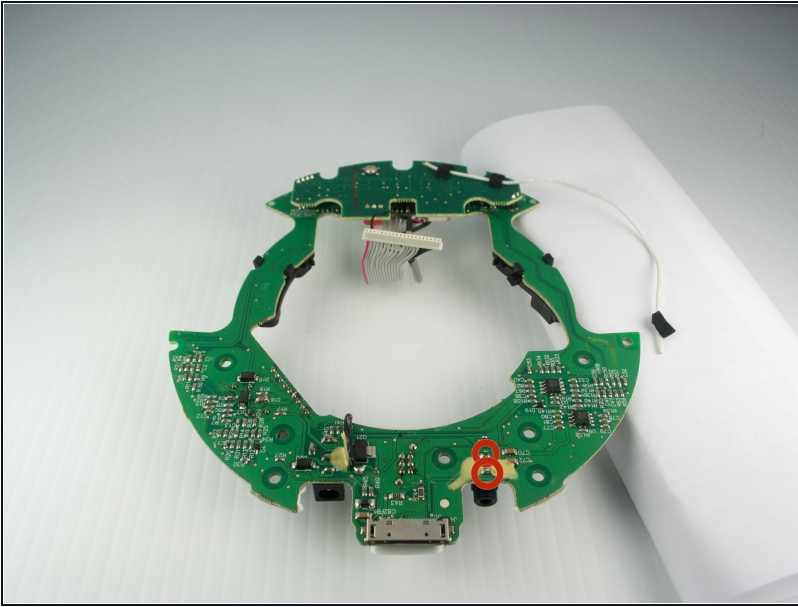
- Remove the T-10 torx screw on the bottom of the device that attaches the base tube to the circuit board.
- Turn the device so that the base tube is on top.
- Remove the base tube by pulling up.
- May need to cut the rubber adhesive between the base tube to the circuit board.

Step 13 — Auxiliary Jack



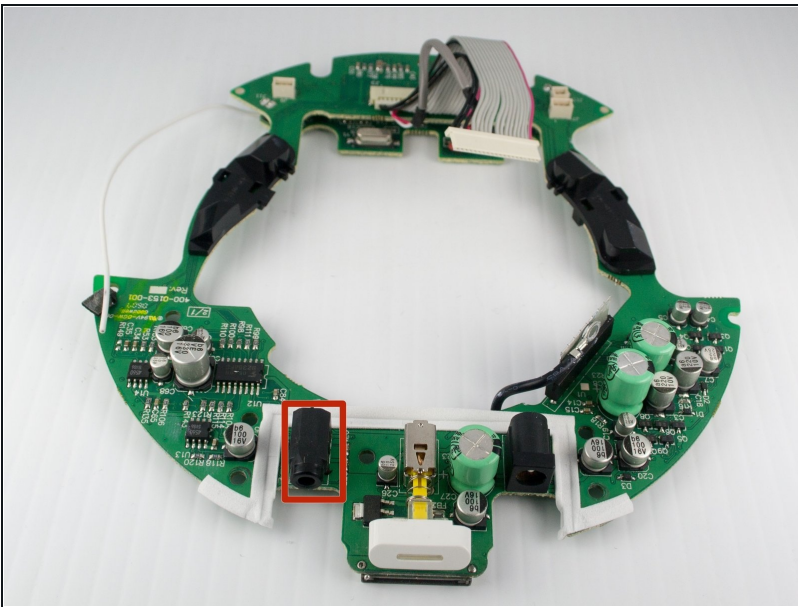
- Turn the device upside down.
- Desolder the back lead for the auxiliary port that is circled.
- Heat the lead until the solder melts.
- Remove the solder with the [solder pump](#).
- For help with soldering view the iFixit [soldering guide](#)

Step 14



- Repeat step 13 for the other two leads.

Step 15



- Turn your device right-side up.
- Remove the auxiliary jack.

To reassemble your device, replace the auxiliary jack with a new one soldering it in place. Follow these instructions in reverse order.