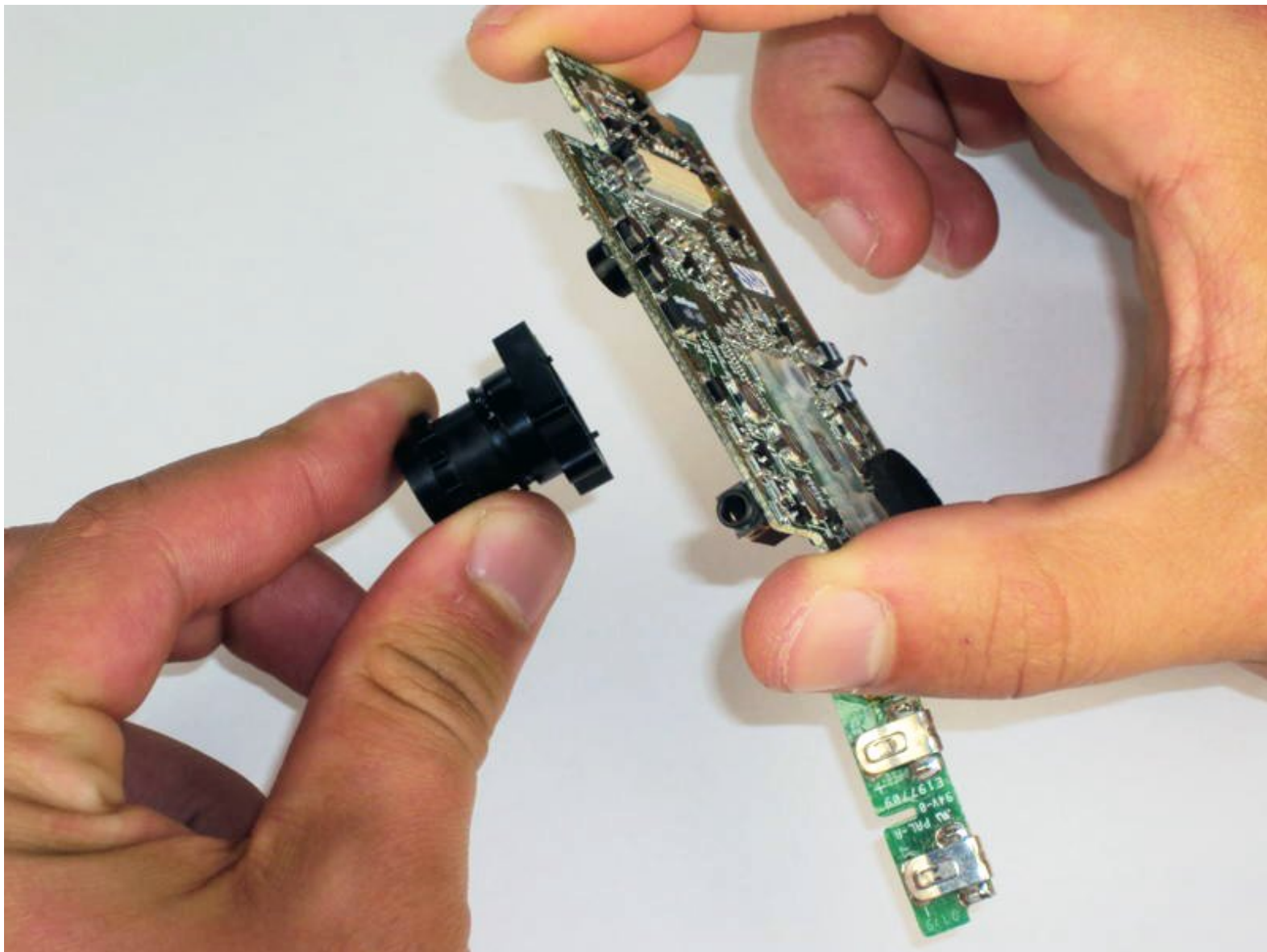




Flip Video Lens Replacement

Written By: Elizabeth



INTRODUCTION

This guide will show you how to replace the camera lens of your Flip Video.



TOOLS:

- [Phillips #00 Screwdriver](#) (1)
-

Step 1 — Outer Shell



- ✦ Turn off the device and take the batteries out.
- Remove metal sticker under the LCD screen with a spudger.
- ⓘ This may require a large force to pry off the glued sticker.

Step 2



- Remove the 4 gray screw caps with the spudger. These cover the screw heads and protect from dirt or grime.

Step 3



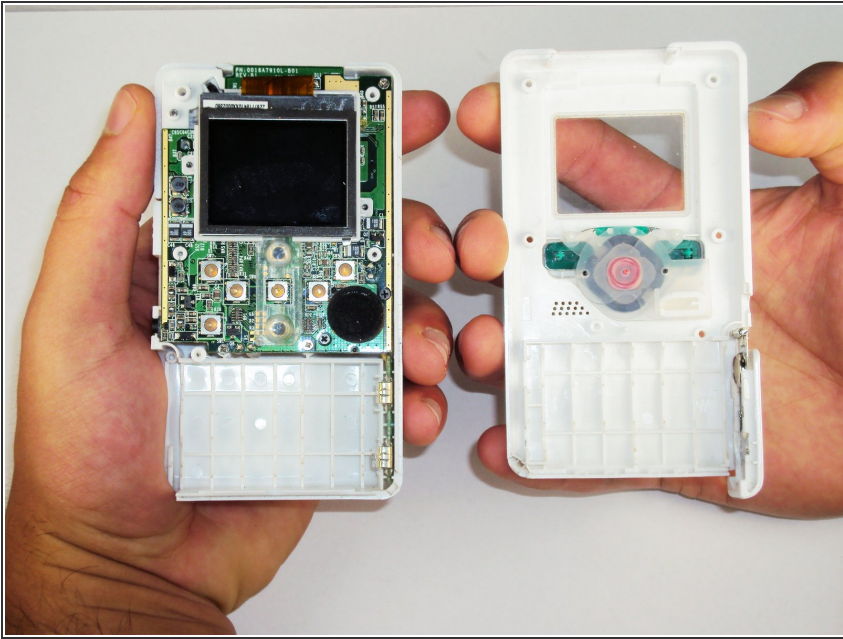
- Remove the 5 10mm screws with the #00 Phillips screwdriver. These connect the back of the outer shell to the front of the outer shell.

Step 4



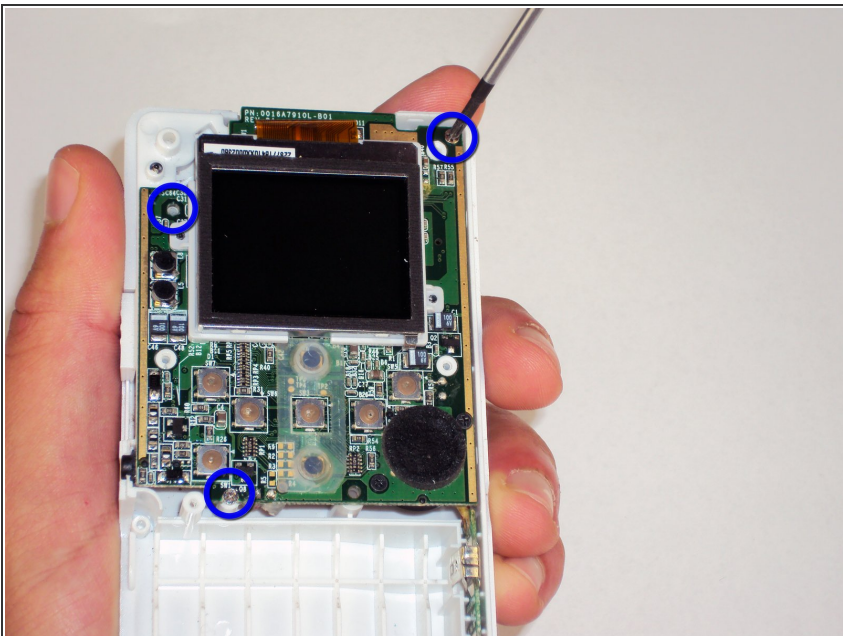
- Open battery door. This can be done by gently depressing and sliding the battery down downward.

Step 5



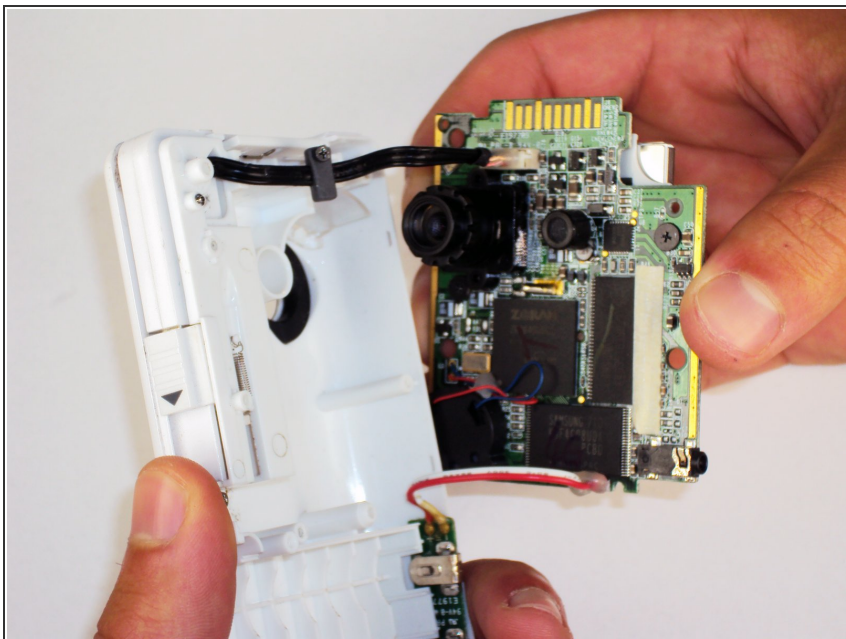
- Use the spudger to separate outer shells.
- The spudger must be inserted between the shell halves to pry the edges apart.
- Slowly work around the outside to separate the halves.

Step 6 — Circuit Board



- Remove the 3 5mm screws securing the circuit board to the front shell with the #00 Phillips screwdriver.

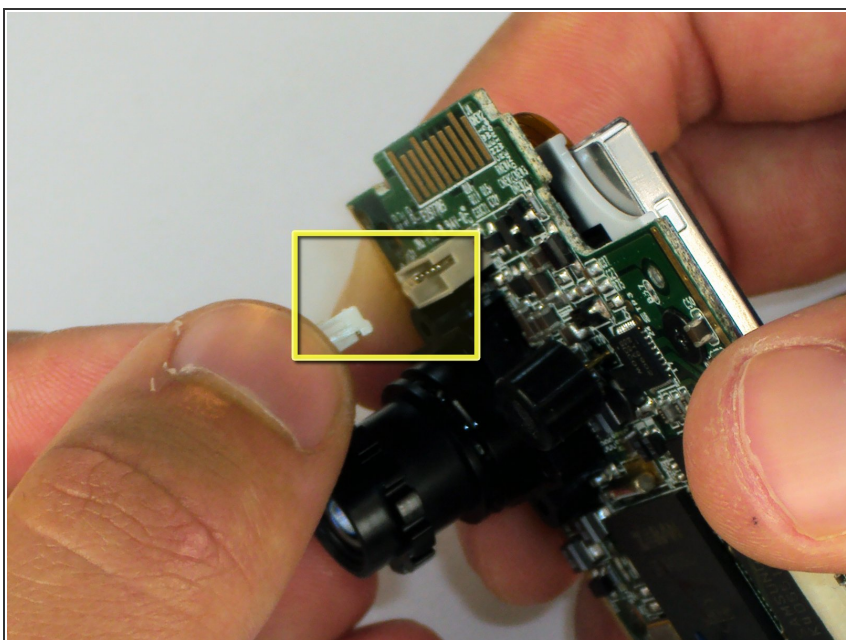
Step 7



- Slowly lift the left side of the circuit board.

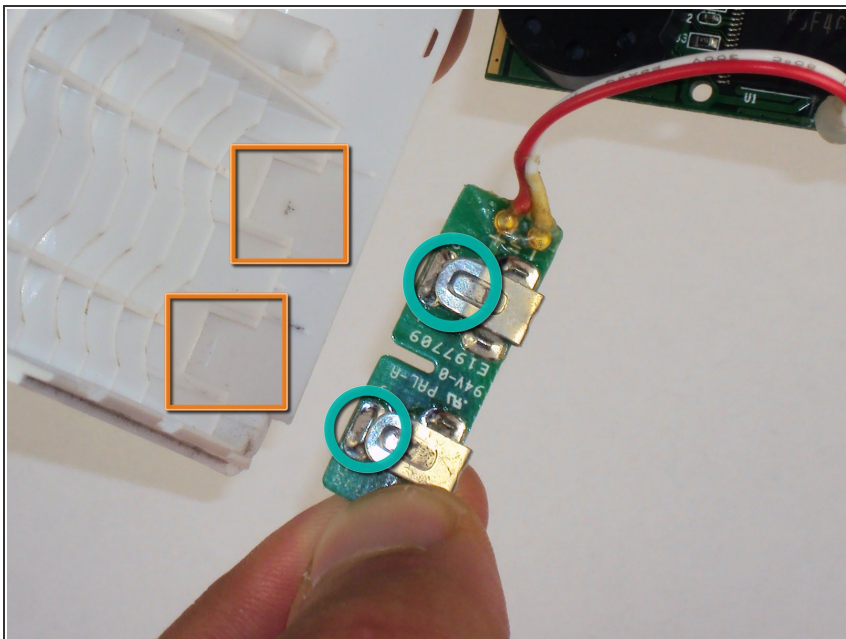
⚠ Do not attempt to remove the circuit board completely yet. It is still connected to the device.

Step 8



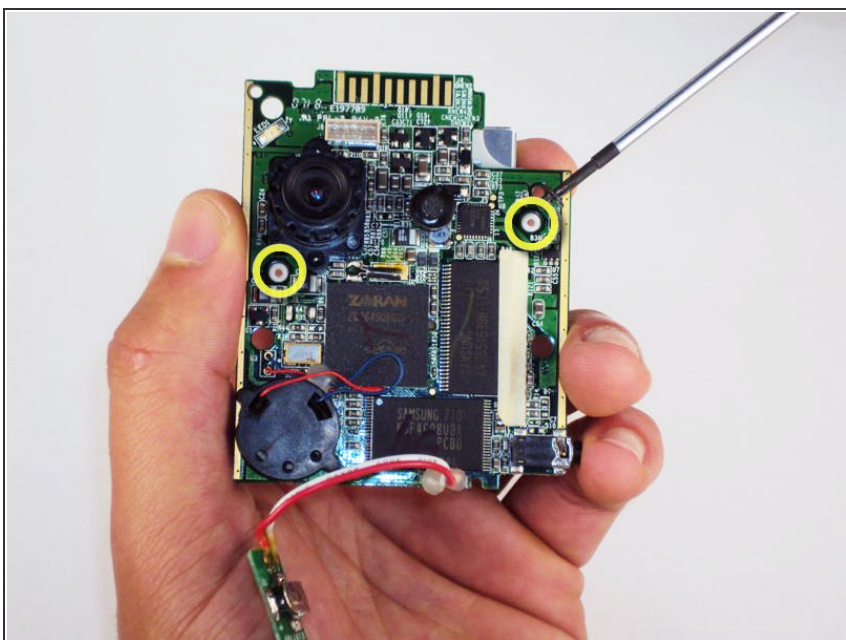
- Disconnect the USB port cable from the back side of the circuit board.

Step 9



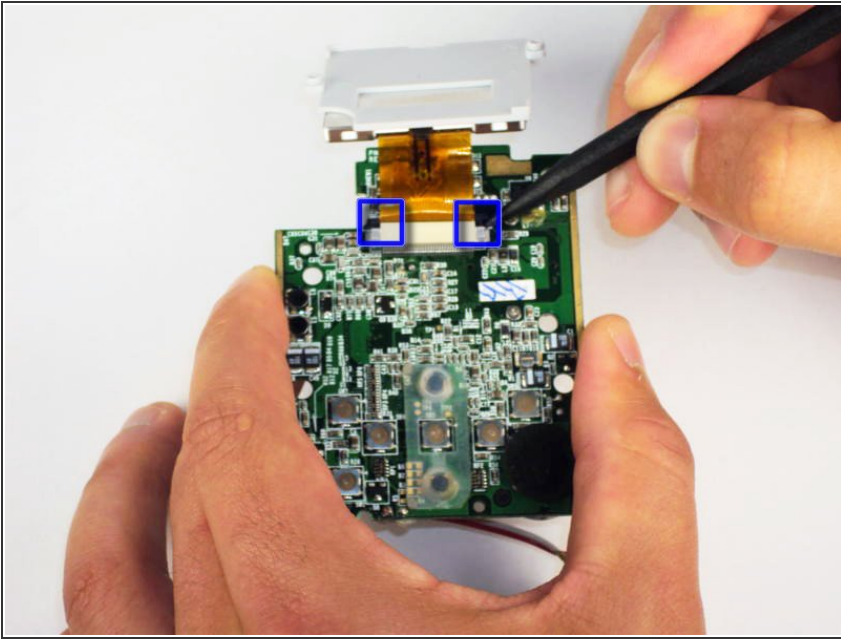
- Slide out the battery contacts.
- Battery contacts
- Slot where battery contacts were located

Step 10 — LCD Screen



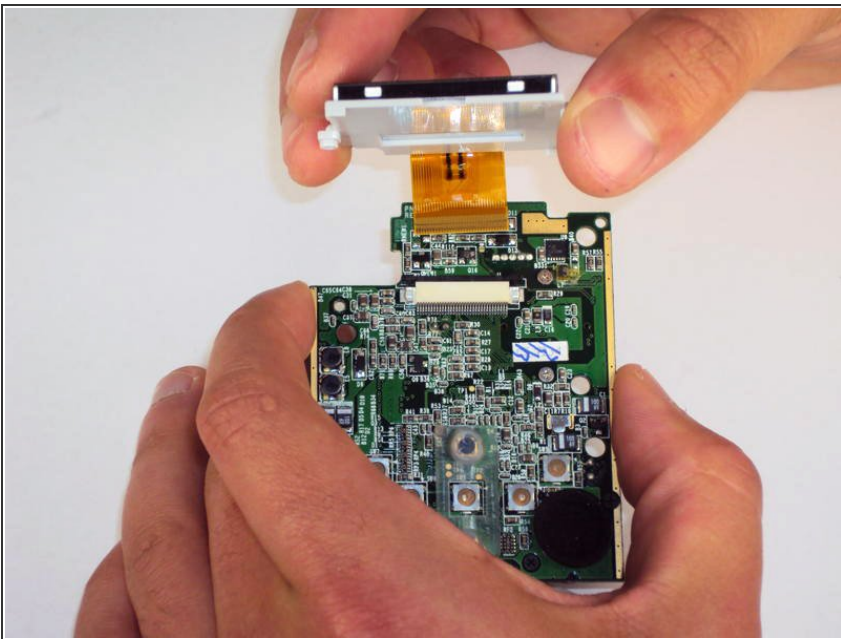
- With the LCD screen facing away from you, remove the 2 bronze 3 mm screws securing the LCD using the #00 Phillips screwdriver.

Step 11



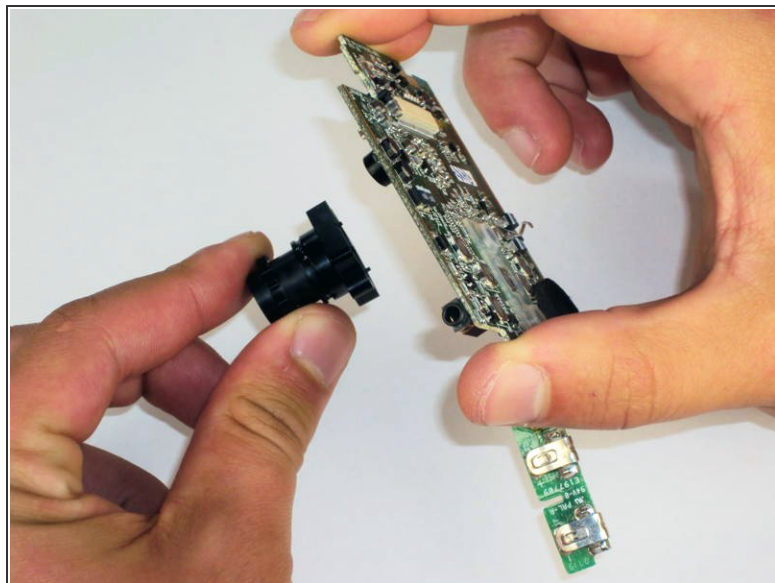
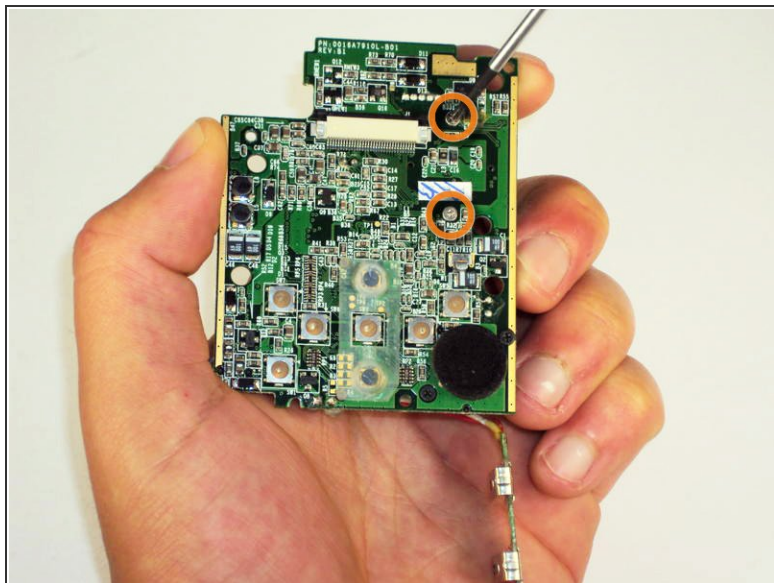
- Flip over the circuit board and unlock the two black tabs on the ribbon connector by sliding them upwards.

Step 12



- Gently pull out ribbon cable.
 - ⚠ If the ribbon cable does not come out easily you may not have fully unlocked the ribbon cable connector in the previous step.
- ⓘ The LCD screen is now removed and can be replaced.

Step 13 — Lens



- Flip over circuit board so the ribbon connector is facing up.
- Remove the 2 stainless steel 3mm screws securing the lens to circuit board with the #00 Phillips screwdriver.
- ⓘ The lens can now be removed and replaced.

To reassemble your device, follow these instructions in reverse order.