



Durofix RV332 Bit Chuck Replacement

This guide will demonstrate how to properly replace a defective bit chuck on the Durofix RV332 Cordless Li-ion Screwdriver.

Written By: Tyler Vincent





TOOLS:

- [Phillips #0 Screwdriver](#) (1)
- [iFixit Opening Tools](#) (1)



PARTS:

- [Bit chuck](#) (1)
- [White Lithium Grease](#) (1)

Step 1 — Bit Chuck



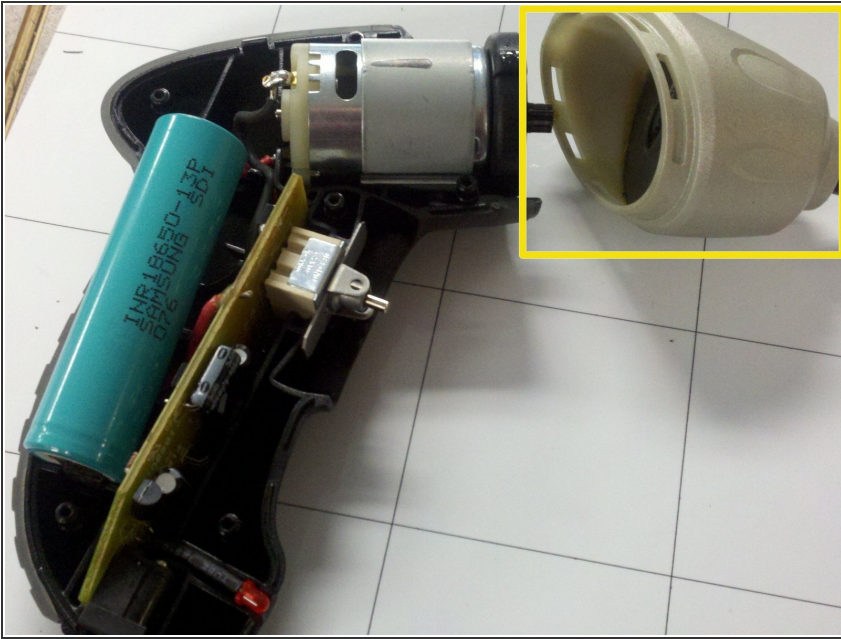
- Remove the six 13 mm casing screws with the #0 Phillips screwdriver.

Step 2



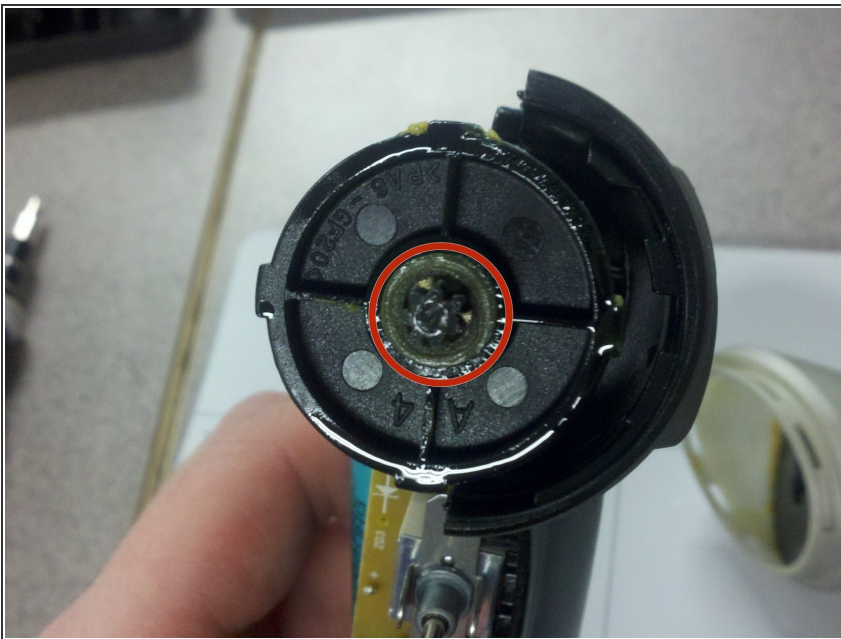
- Separate the screwdriver casing halves with the plastic opening tool.

Step 3



- Slide the bit chuck assembly out from the casing half.

Step 4



- Apply a dab of grease to the end of the drill motor coupler.

Step 5



- Insert new bit chuck assembly into the drill casing.

To reassemble your device, follow these instructions in reverse order.