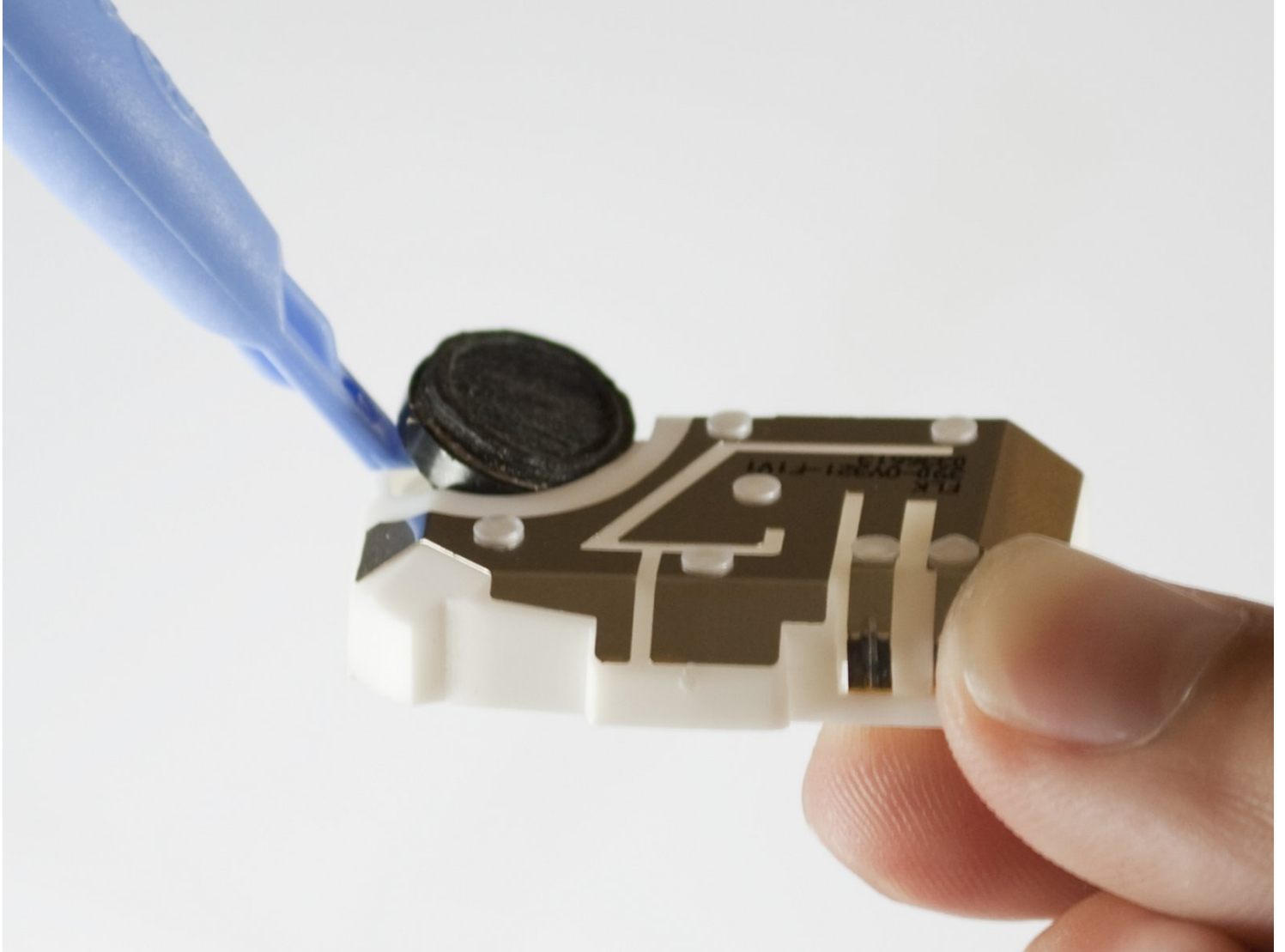




Samsung SGH-X105 Loud Speaker Replacement

Replace a broken loud speaker.

Written By: Sutton Smiley



INTRODUCTION

Replace a broken loud speaker.

TOOLS:

Phillips #00 Screwdriver (1)

Step 1 — Battery



- Rotate the phone onto its front side so that the LCD screen is facing away from you.

Step 2



- Remove the battery by pressing down on the battery release button while sliding the battery downwards.

Step 3 — Front & Back Panels



- Remove the four small black screws that secure the back phone panel using the Phillips #00 screwdriver.
- ⓘ Complete removal of screws may not be necessary.

Step 4



- Carefully separate the front and back panels by gently prying them apart. Start at the bottom of the phone (near the AC charger input).
- ⓘ Volume control button will be unsecured and may fall out as soon as the panels are separated.
- ⓘ Gentle force may be required to separate the panels at the top latch.
- ⓘ There are two wires connecting the front and back panels. Be careful not to rip these wires out when separating the panels.

Step 5



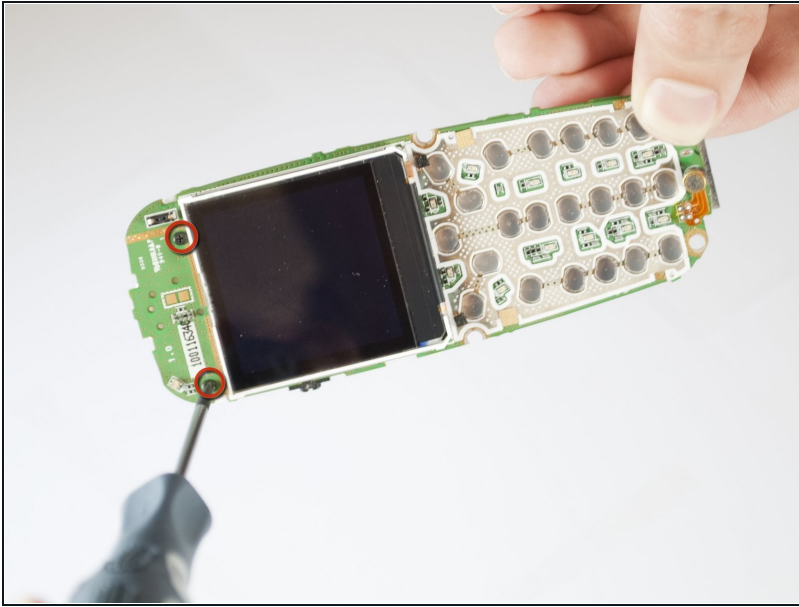
- Using your nails, [tweezers](#), or any precise grabbing tool, pinch the antenna wire connector (clear plastic plug) and pull gently. It should pop out rather easily.

Step 6 — Logic Board



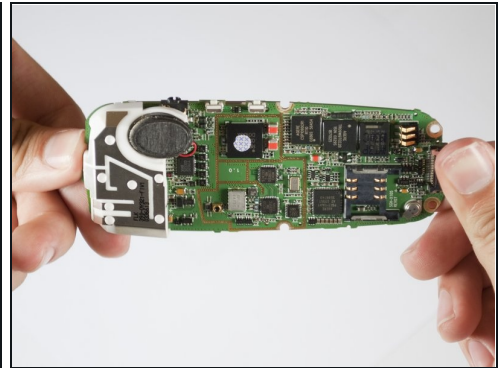
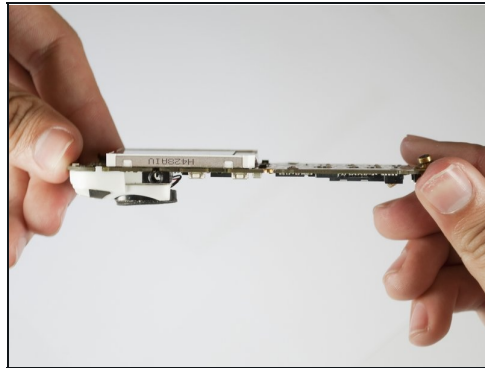
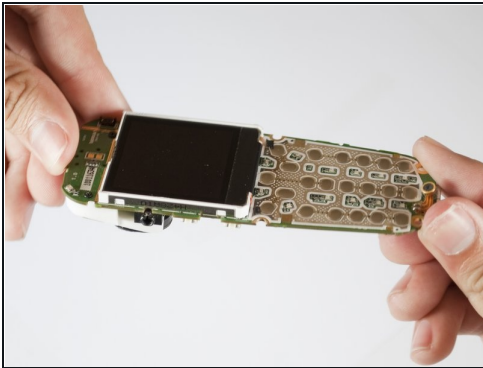
- Gently remove the logic board and LCD screen from the back cover of the phone.

Step 7



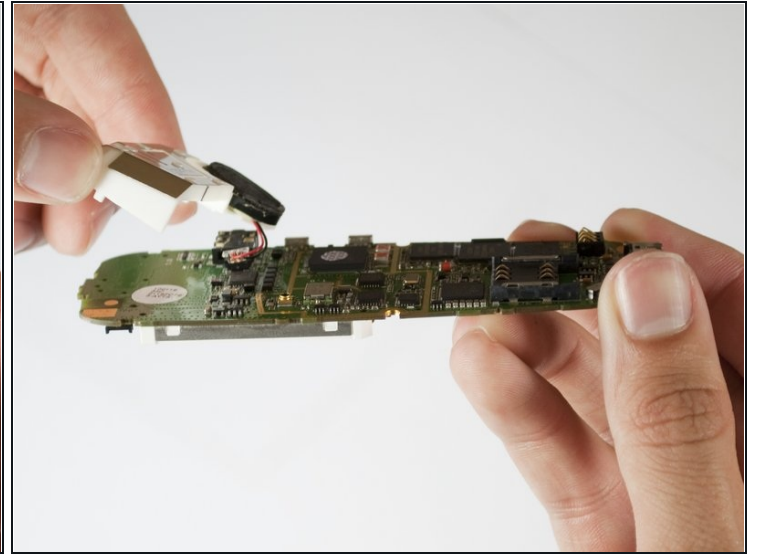
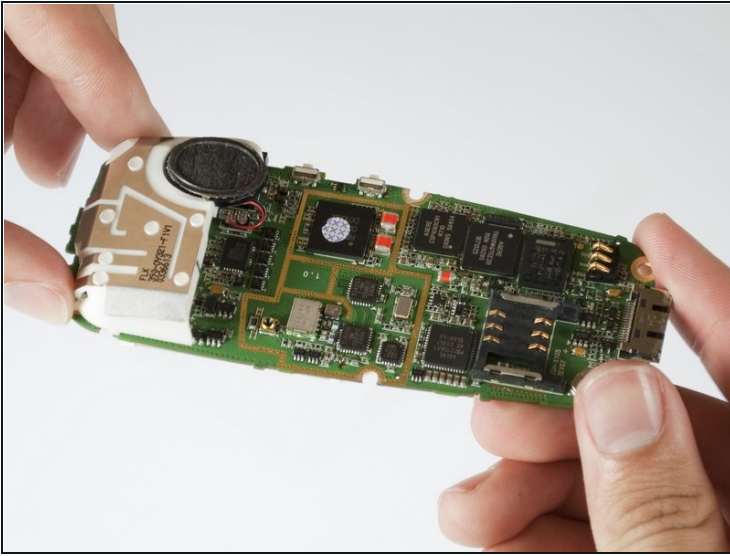
- Remove the two screws above the LCD screen with a Phillips #00 screw driver. These connect to the white plastic cover in which the speaker is housed located on the reverse side of the logic board.
- ⓘ Make sure the white plastic cover remains in contact with the logic board while removing the screws.

Step 8



- Rotate the logic board so that the LCD screen is face down.
- ⓘ Make sure the white plastic cover remains in contact with the logic board while it is being rotated.
- ⓘ Screws may fall out as the object is rotated.

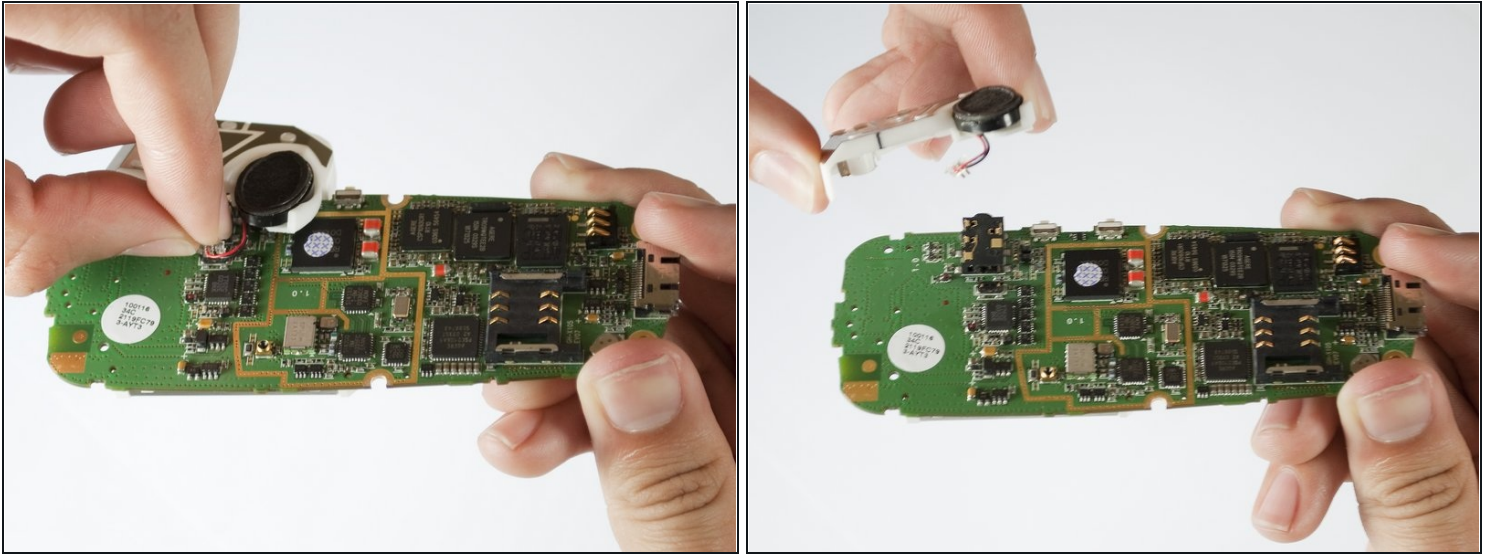
Step 9



- Gently begin to separate the white plastic cover from the logic board.

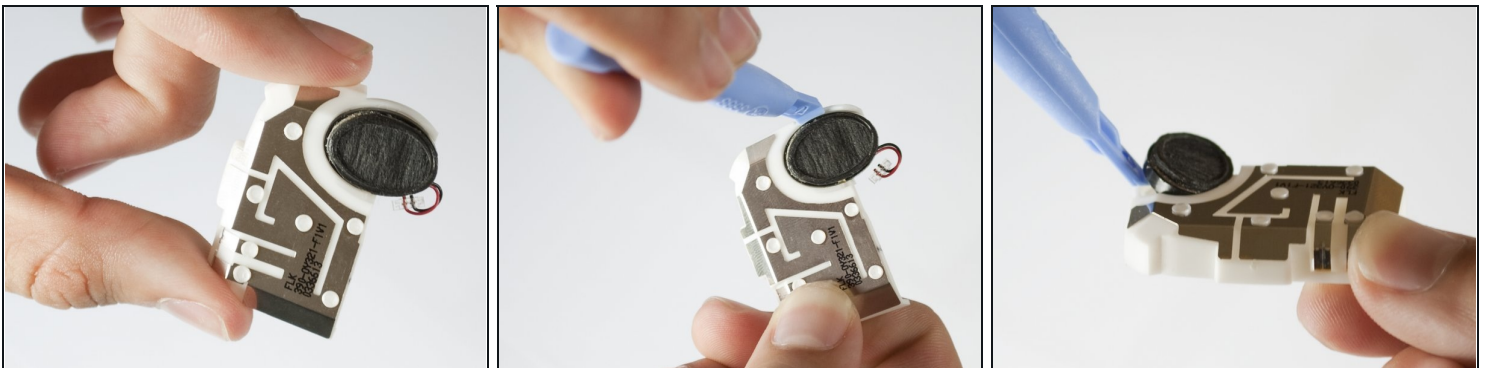
⚠ This cover will be connected by two small wires. Be sure not to break this connection.

Step 10



- Locate the two wires (black and red) which connect the speaker to the logic board.
- Using your nails, [tweezers](#), or any precise grabbing tool, pinch the speaker connector (clear plastic plug that goes into the logic board) and pull gently. It should pop out easily.
- Once the wires are disconnected and the screws removed, the white plastic cover can easily be removed from the logic board.

Step 11 — Loud Speaker



- Use any small flat object to remove the speaker from the white plastic cover by wedging your tool between the speaker and the cover.
- ① The speaker is attached by an adhesive so gently pry the speaker from the cover.

To reassemble your device, follow these instructions in reverse order.