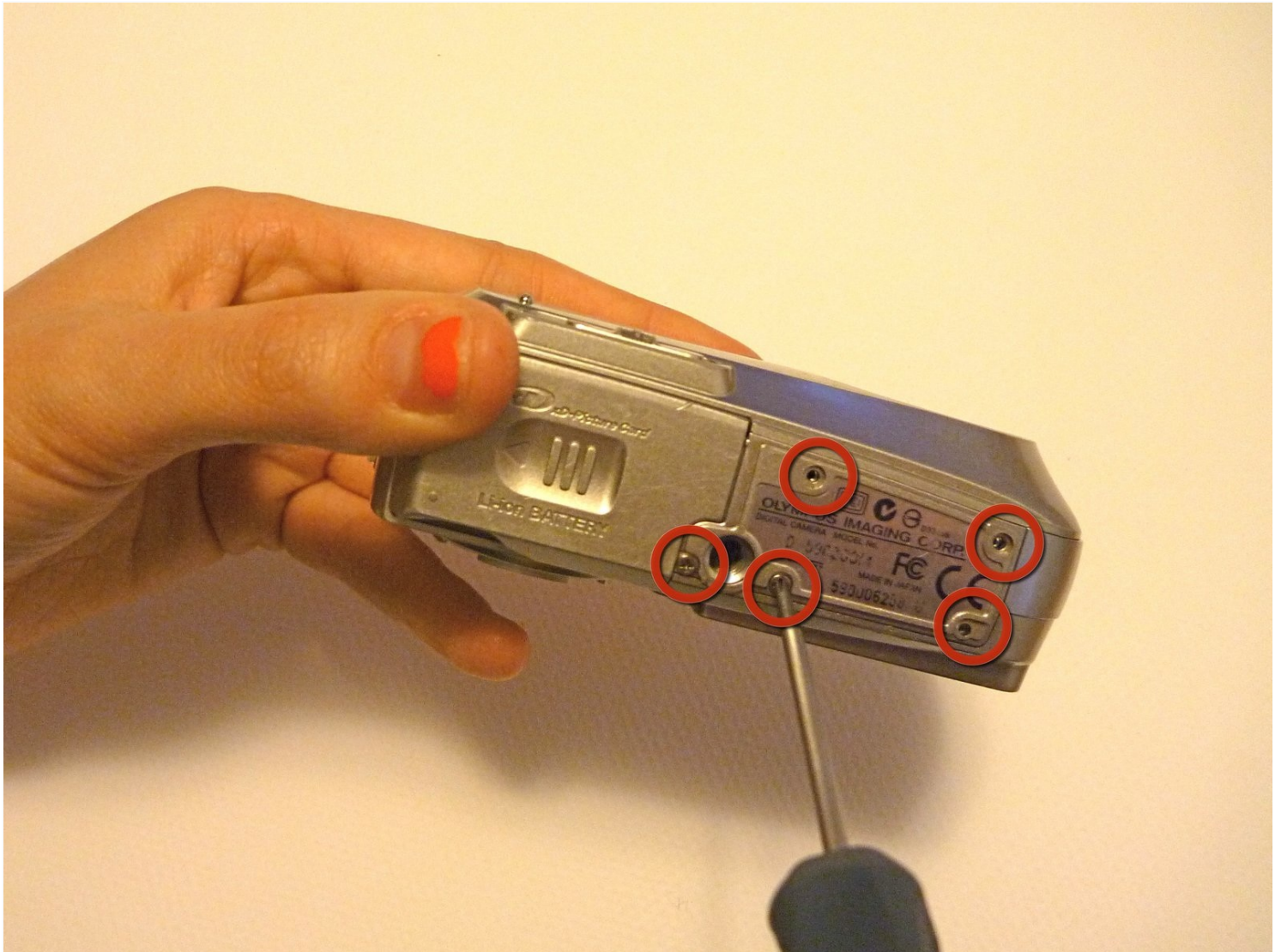




# Olympus D590 Face Plate Replacement

Step-by-step Instruction Guide Olympus D590...

Written By: Katie



# INTRODUCTION

Step-by-step Instruction Guide

Olympus D590 Camera Faceplate Removal

Access of internal housing compartment body

---

## TOOLS:

[iFixit Opening Tool](#) (1)

[Phillips #00 Screwdriver](#) (1)

---

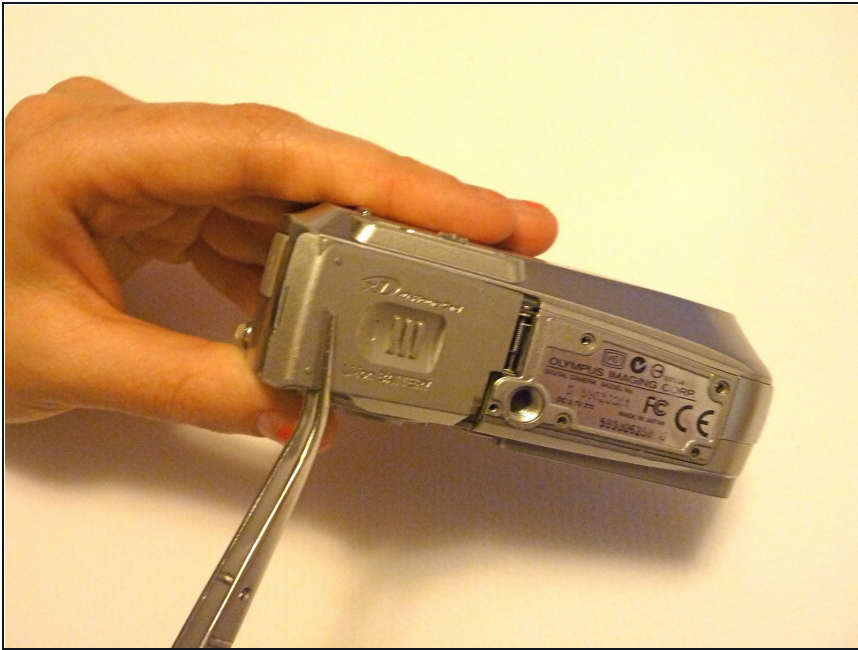
## Step 1 — Face Plate



- Remove five baseplate screws using a Phillips #00 screwdriver.

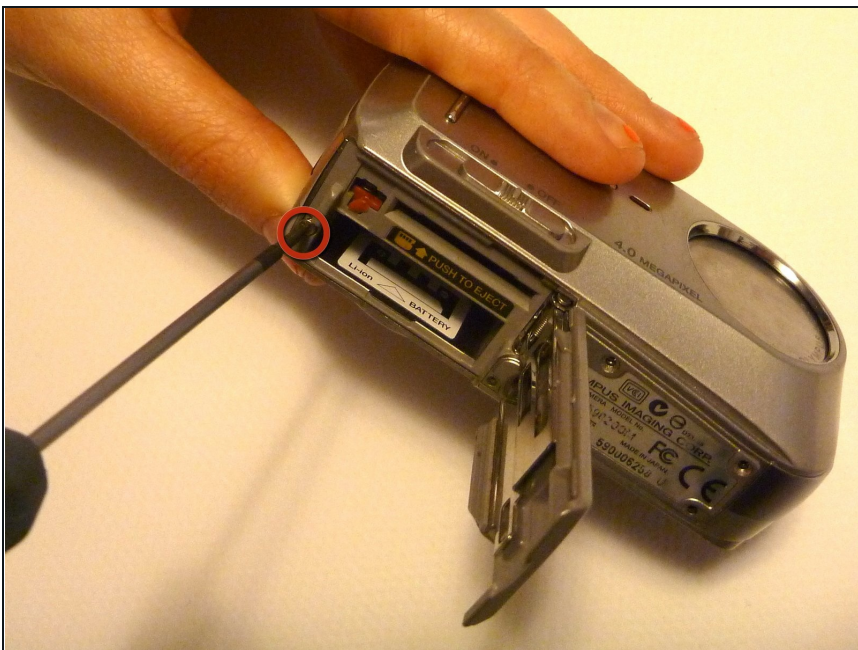


## Step 2



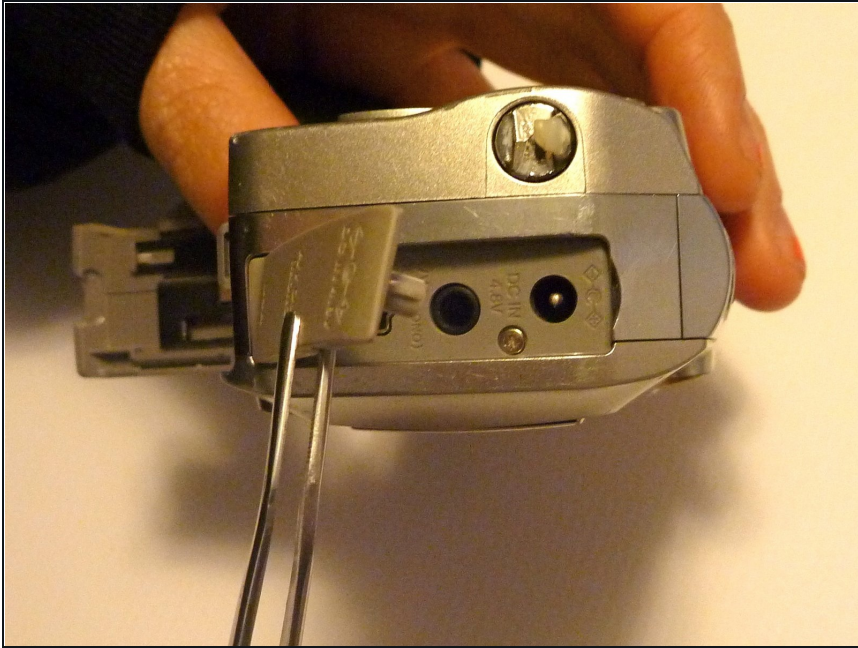
- Press and slide the battery cover retainer clip to the left. Use [tweezers](#) to lift the battery cover away.

## Step 3



- Remove the single screw from the battery housing using a Phillips #00 screwdriver.

## Step 4



- Using tweezers, lift the rubber plate to expose the ports.

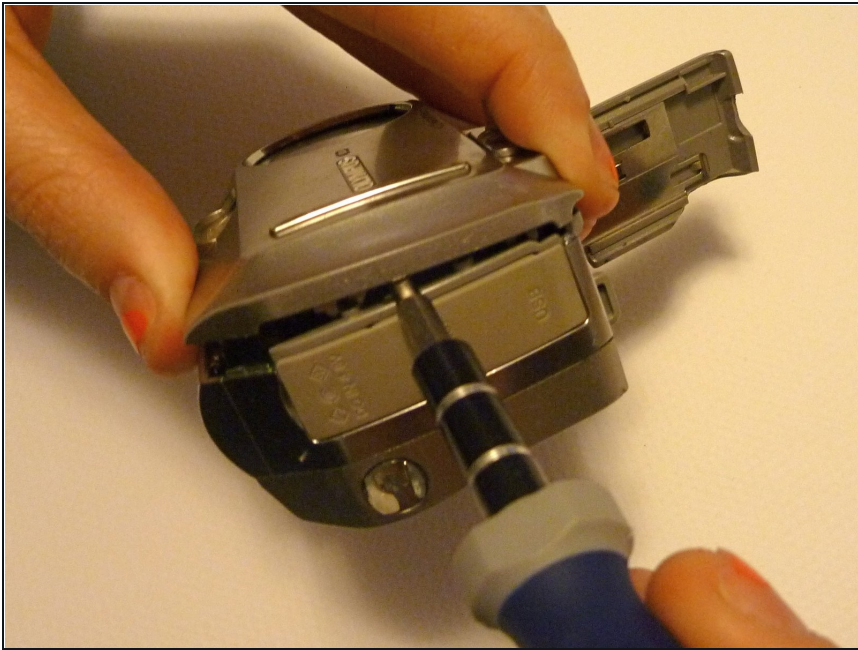
## Step 5



- Remove two screws from the ports using a Phillips #00 screwdriver.

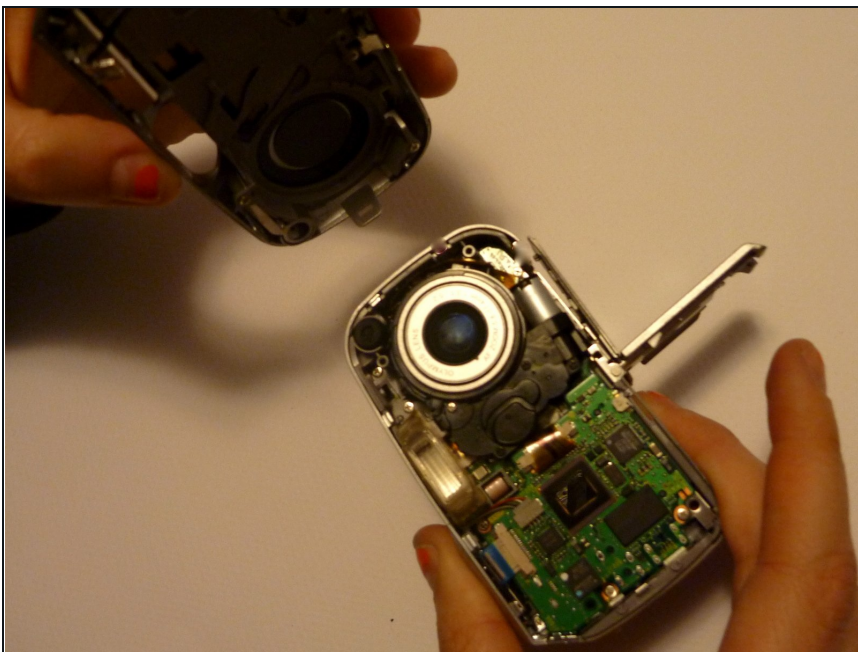


## Step 6



- Use a spudger to pry the faceplate away from the rest of the camera.

## Step 7



- To avoid disconnection of the connector line to the motherboard, use caution when pulling faceplate away from camera case.

⚠ Damage to the connector line will prevent the on/off power switch's operational function.

---

To reassemble your device, follow these instructions in reverse order.

