



# HP Media Center 876x Side Panel Replacement

The side panel is the main entry port into the...

Written By: Balakrishnan Pillai



# INTRODUCTION

The side panel is the main entry port into the inner cavity of the HP Media Center 876x. In order to perform any repairs or replacements, the side panel must be removed.

## TOOLS:

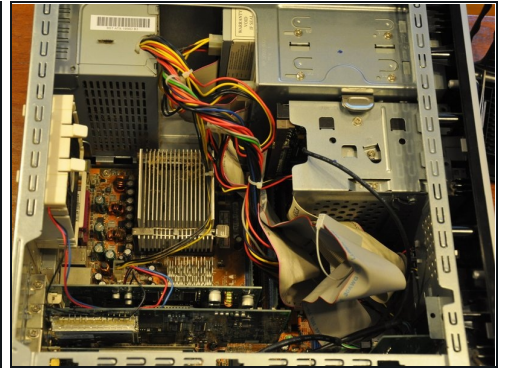
Phillips #1 Screwdriver (1)

### Step 1 — Side Panel



- Remove the two (9 mm) hand screws on the back panel.

## Step 2



- Place the tower on its side.
  - Slide the side panel horizontally to detach, and pull upward to remove.
- 

To reassemble your device, follow these instructions in reverse order.