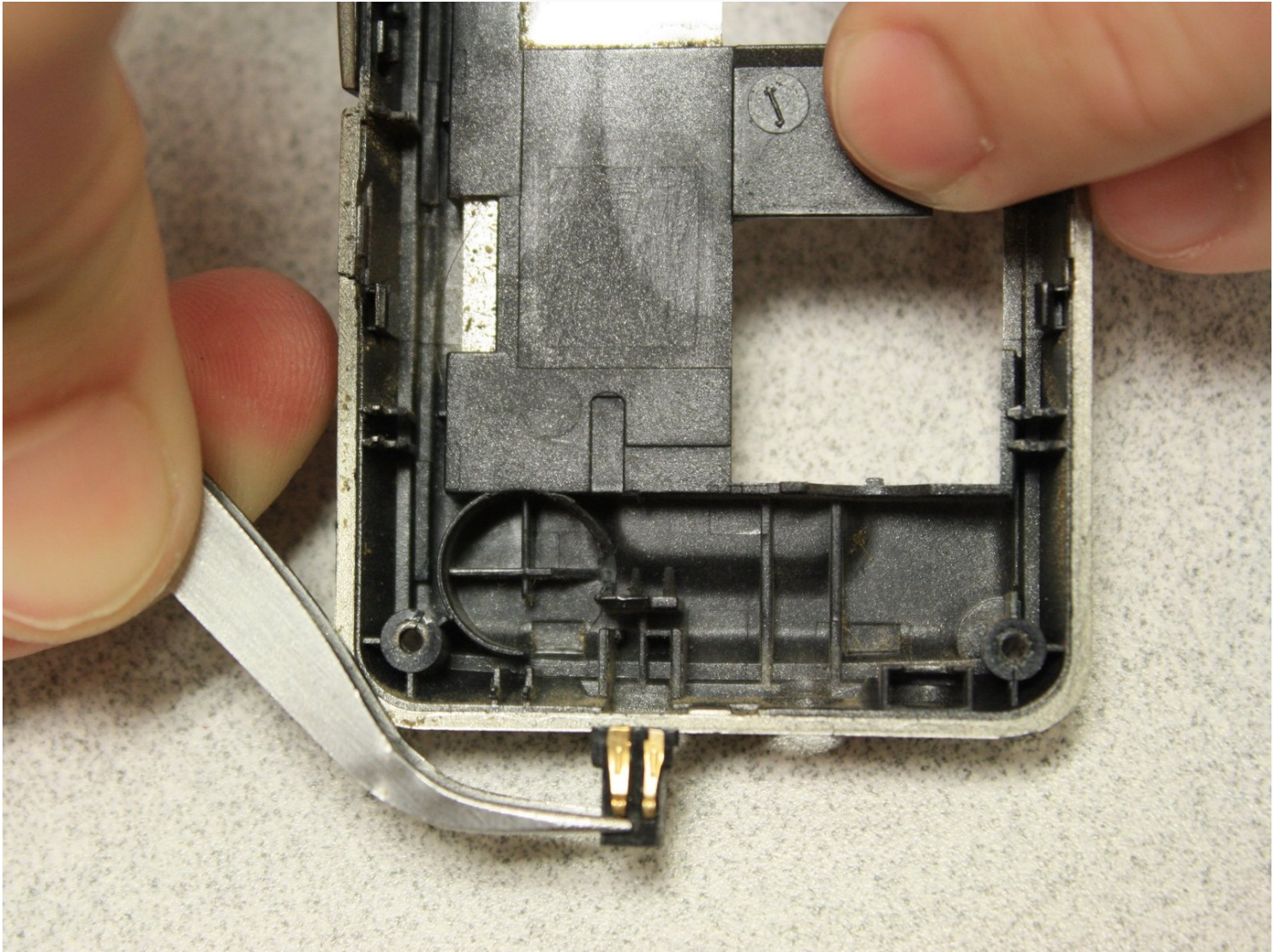




Snapfon ez One Charging Port Replacement

The charging port is the component of the phone...

Written By: John Bender



INTRODUCTION

The charging port is the component of the phone that allows the charger to be connected to the phone in order to charge the internal rechargeable battery.

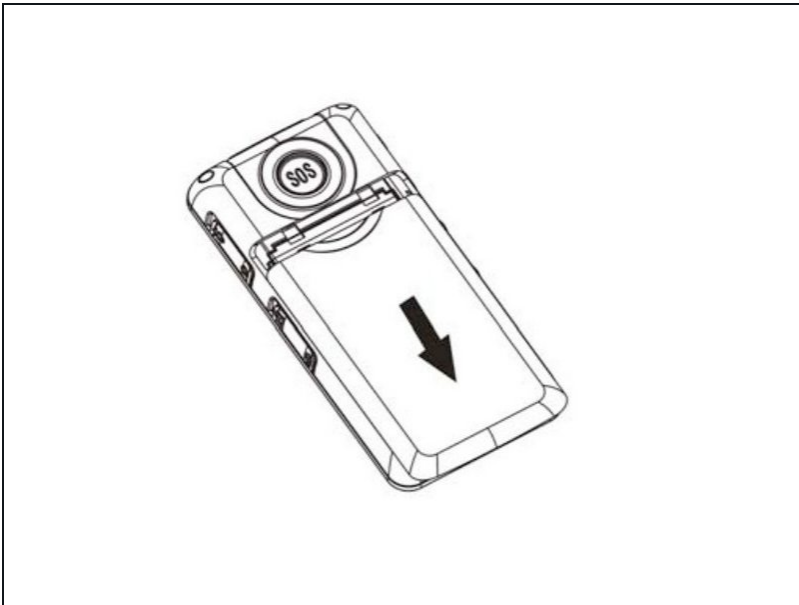
TOOLS:

[iFixit Opening Tool](#) (1)

[Phillips #00 Screwdriver](#) (1)

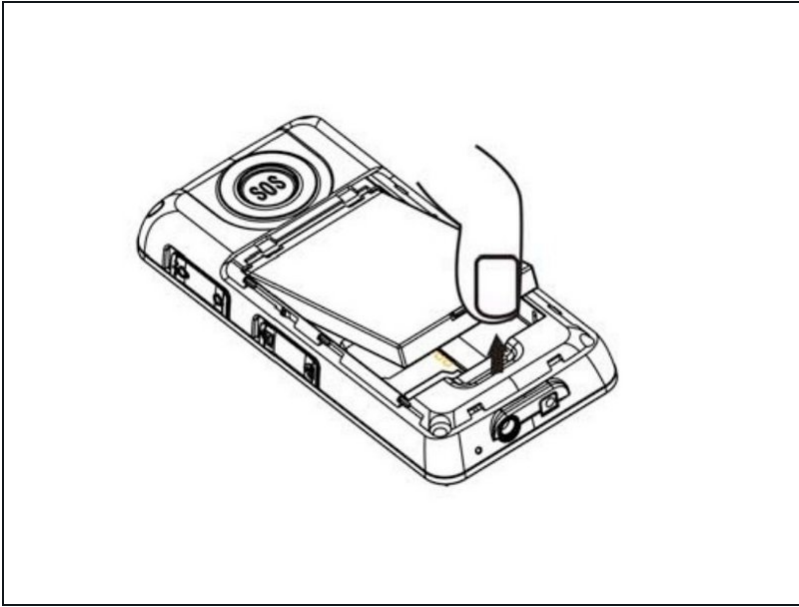
[Tweezers](#) (1)

Step 1 — Remove the battery cover



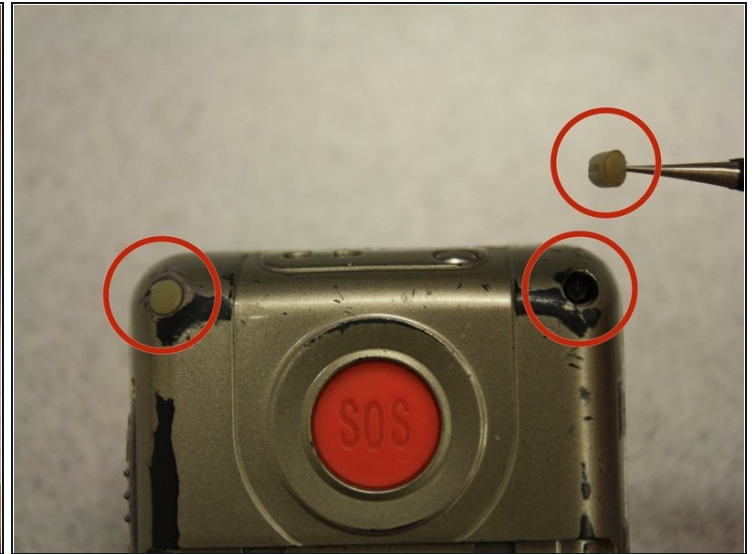
- Turn off the phone to prevent data loss.
- Press and slide the battery out to remove it.
- ⓘ Picture rights belong to Snapfon®. Picture is used for educational purposes only. No copyright infringement intended.

Step 2 — Remove the battery



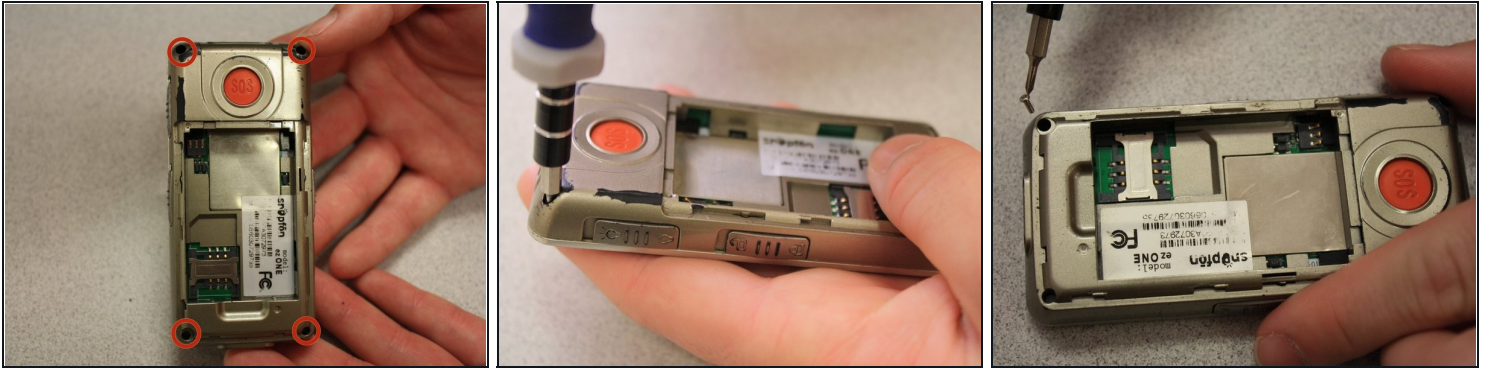
- Pry the battery out with your thumb or the iFixit opening tool.
- ⓘ Make sure to properly dispose of the old battery at a recycling center.
- ⓘ Picture rights belong to Snapfon®. Picture is used for educational purposes only. No copyright infringement intended.

Step 3 — Removing the plastic inserts



- Remove the four rubber inserts from the screw holes using a pair of [tweezers](#).

Step 4 — Remove the shield screws



- Remove the four 3.1mm screws in the corners with a Phillips #00 screwdriver.

Step 5 — Separate the case



- Separate the front case from the back case.
- Remove the metal bumper from the front case's perimeter.

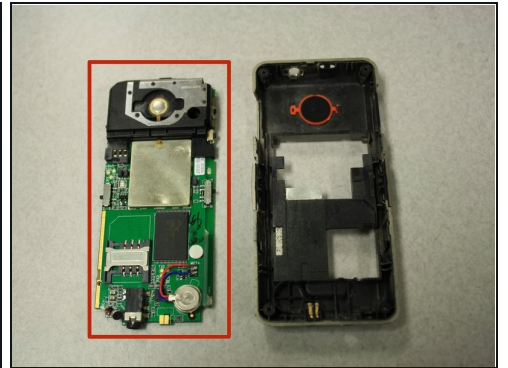
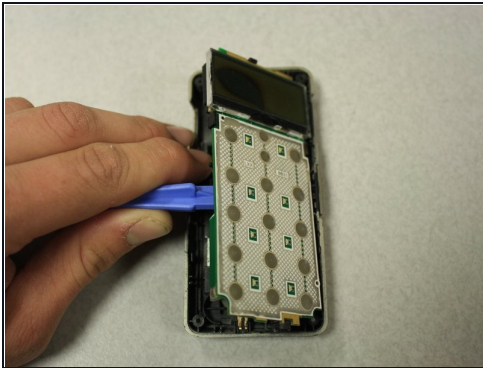
Step 6 — Remove the volume slider



- Pry the volume slider button out with tweezers.

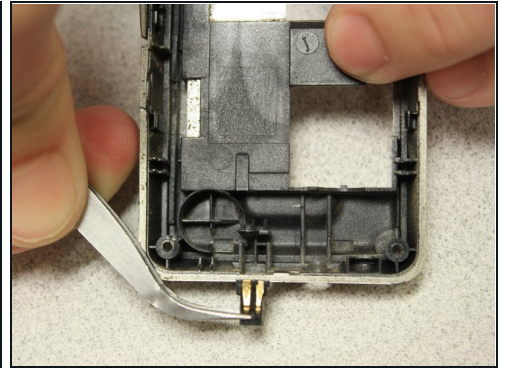
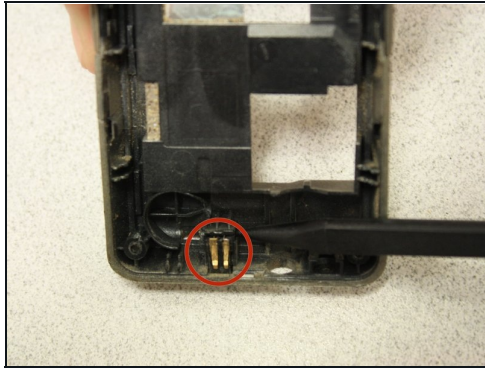
ⓘ The volume slider button may fall out during the separation of the front and back cases. This is OK.

Step 7 — Remove the motherboard



- Separate the circuit board from the inside of the back case by prying between them with the opening tool.
- The last picture is a view of the back of the circuit board.

Step 8 — Charging Port



- Use [tweezers](#) to remove the charging port located inside the back cover of the phone.
- A spudger may be needed to apply pressure with the use of the tweezers for easier removal.

Insert new charging port, and to reassemble your device, follow these instructions in reverse order.