



# Dell Latitude D630 Hard Drive Replacement

Introduction: The hard drive is where you store...

Written By: Savi Chavan



# INTRODUCTION

## Introduction

The hard drive is where you store permanent files on your laptop. If your hard drive is damaged and does not operate properly any more, or you simply want a larger and/or faster one, you can replace it with a new one.

## This guide will teach you

1. Where the Hard Drive is located
2. how to remove safely
3. Tools needed to complete the replacement



### TOOLS:

- [Phillips #0 Screwdriver](#) (1)



### PARTS:

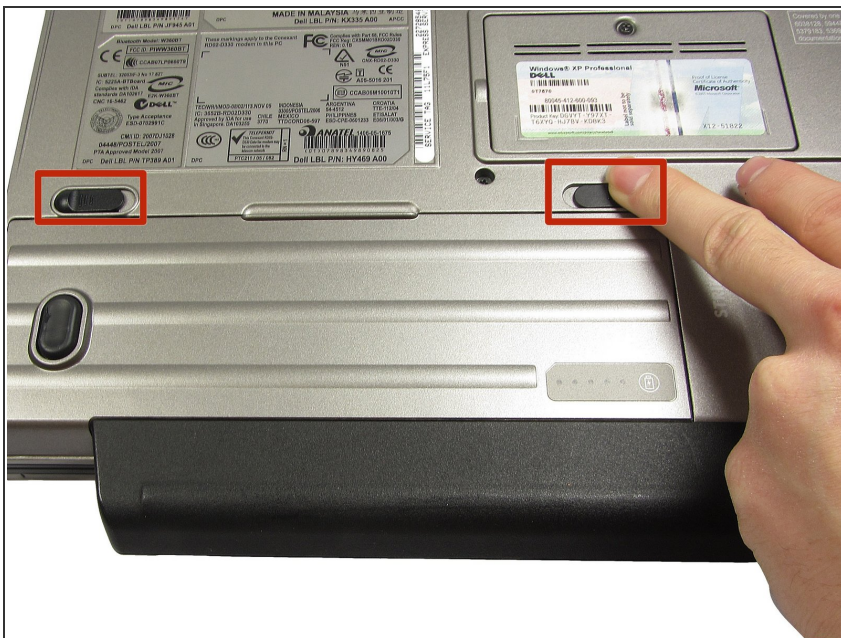
- [Crucial MX500 1 TB SSD](#) (1)
- [Crucial MX500 250 GB SSD](#) (1)
- [Crucial MX500 500 GB SSD](#) (1)
- [Crucial MX500 2 TB SSD](#) (1)

## Step 1 — Battery



- Shutdown the computer, detach it from any power source, and make sure the laptop is closed with its latch securely shut.
- Turn the laptop over so its bottom is facing you.
- ⓘ The laptop pictured comes with a palm rest attached to the battery case. This part may not be present on your laptop. Regardless, the steps are exactly the same.

## Step 2



- Using two index fingers, slide the battery latches outward.
- While still holding the latches out, use your thumbs to slide the battery out towards you.
- Once the battery is dislodged, you can let go of the latches and remove the battery.



## Step 3 — Hard Drive



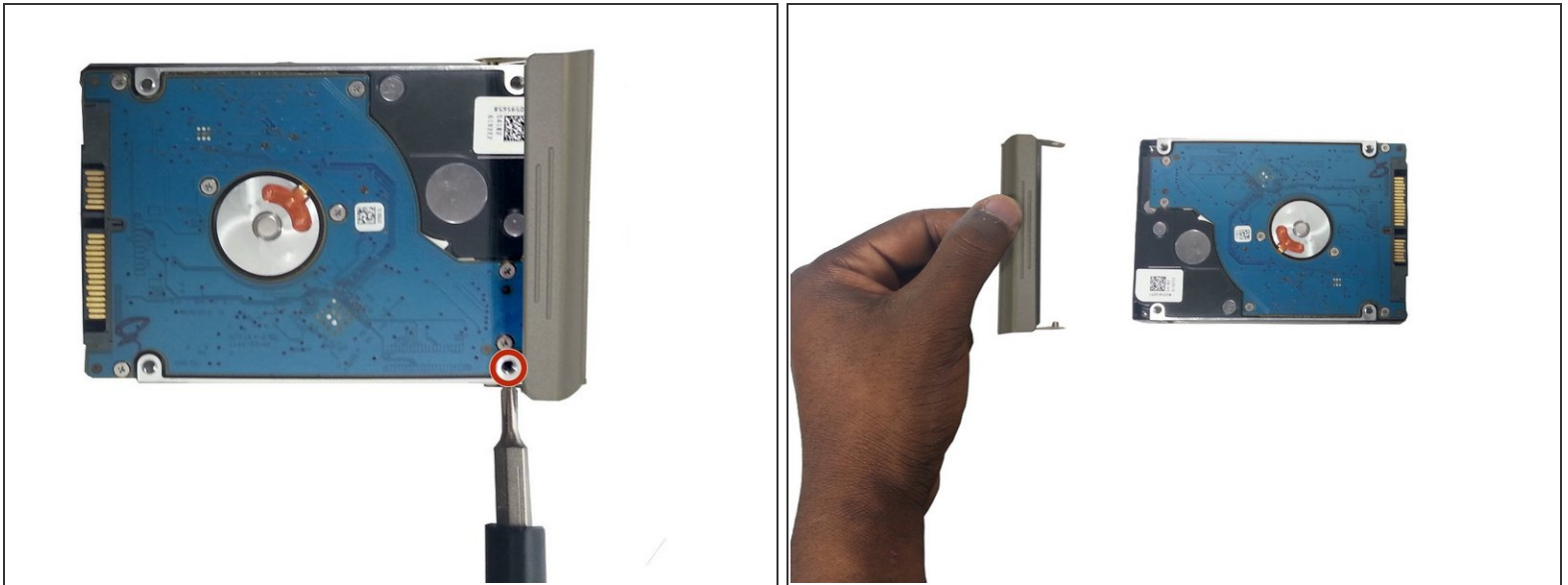
- Position the closed laptop upside down.
- Unscrew the screw closest to the hard drive opening and the one diagonally to the right. This will loosen the hard drive.
- Do not unscrew this screw!

## Step 4



- Place thumb on the hard drive cover and get a firm grip.
- Pull the hard drive out slowly to avoid any further damage to the laptop.

## Step 5



- Unscrew the screw on the right side to remove cover.
- Slide cover off.

To reassemble your device, follow these instructions in reverse order.