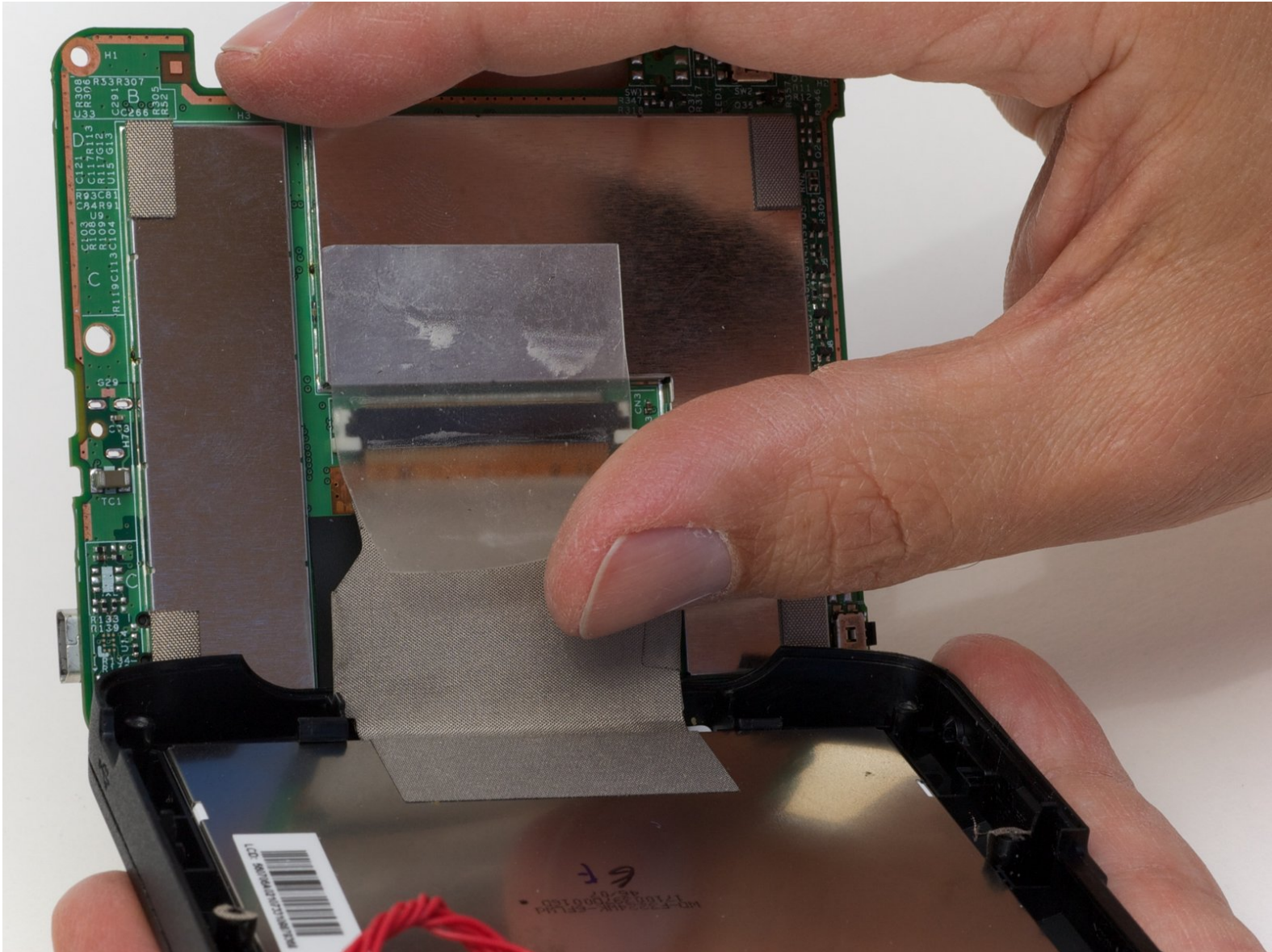




Magellan RoadMate 1200 Display Replacement

Written By: Ross Light



INTRODUCTION

A guide to accessing the RoadMate's display.



TOOLS:

- [Phillips #00 Screwdriver](#) (1)
-

Step 1 — Back Cover



- Remove the four rubber caps from the back by using the Phillips #00 screwdriver.

Step 2



- Remove the four screws holding the cover in place by using the Phillips #00 screwdriver.

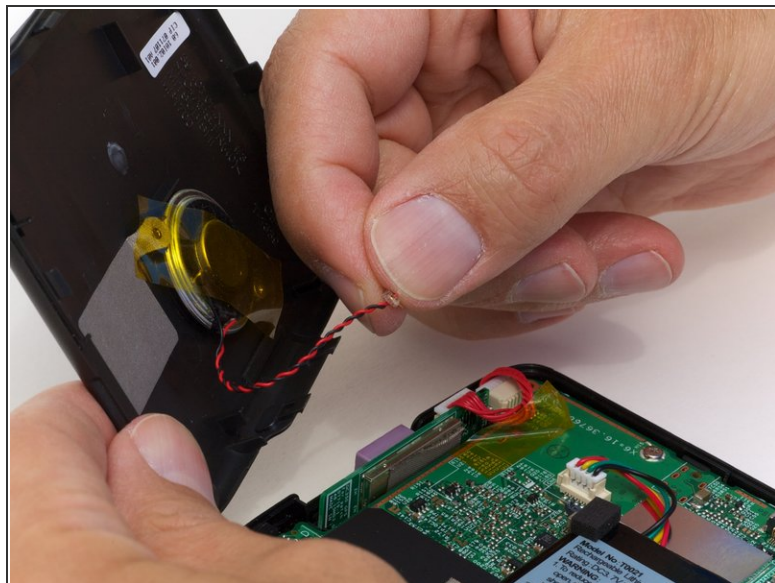
Step 3



- Remove the back cover from the device by separating the back cover along its seam.

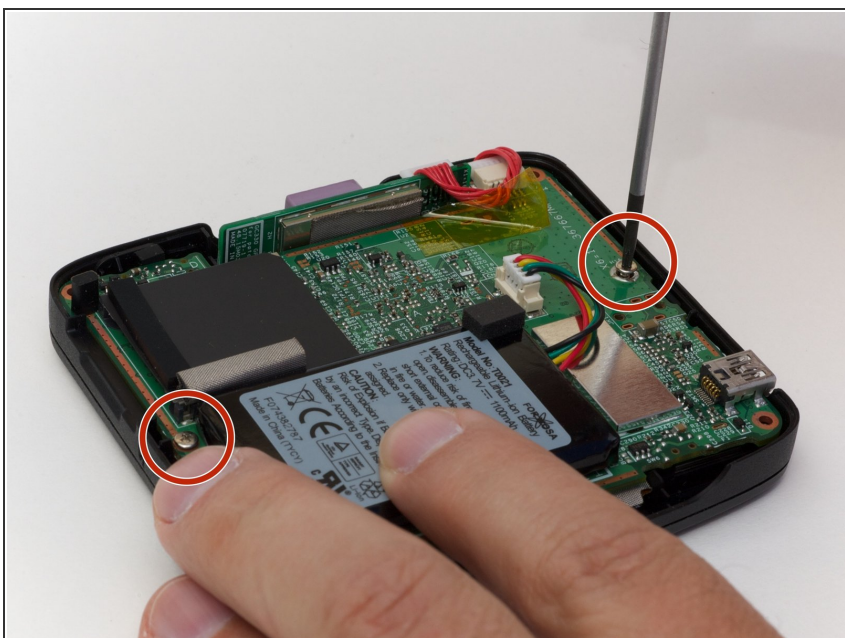
⚠ Slowly lift the cover—the speaker is screwed onto the back cover and is connected to the circuit board.

Step 4



- Pull the speaker cord, horizontally, by its base, away from the motherboard.
- ☑ When reassembling, make sure that you plug the terminal in the same way. The black wire should be on the side farthest from the battery.

Step 5 — Motherboard



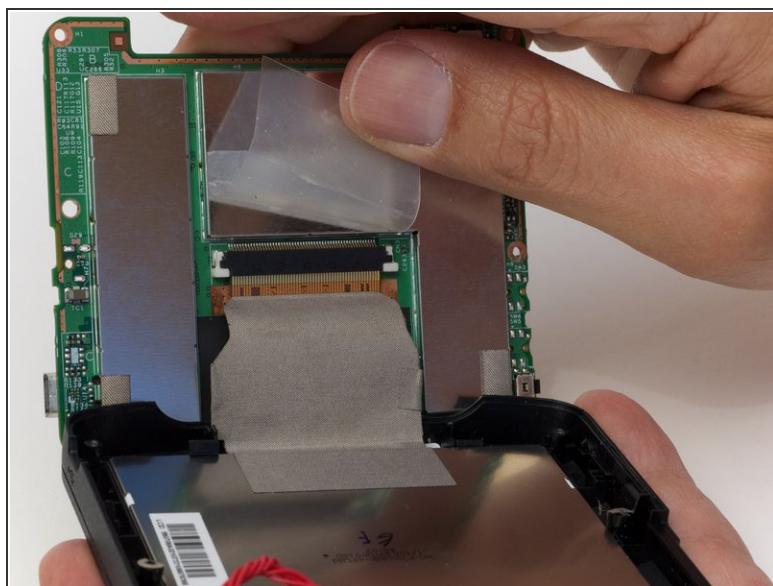
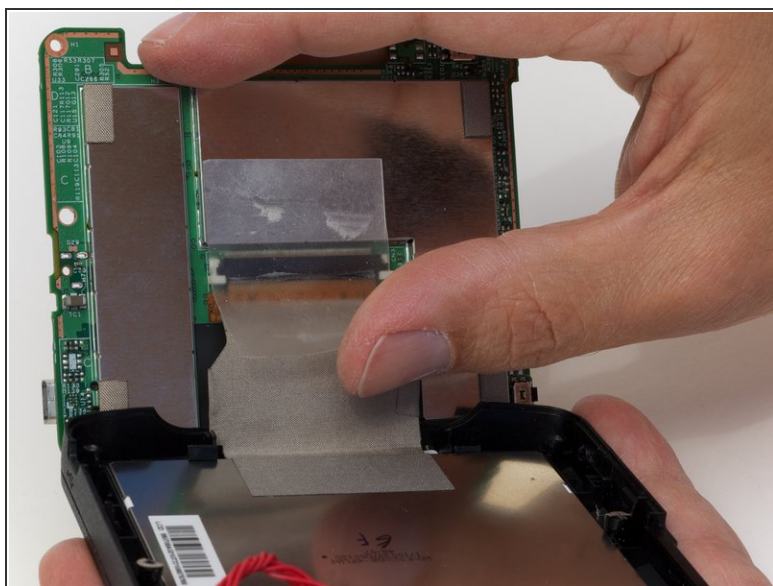
- Remove the two screws on that are located on opposite sides of the board.

Step 6



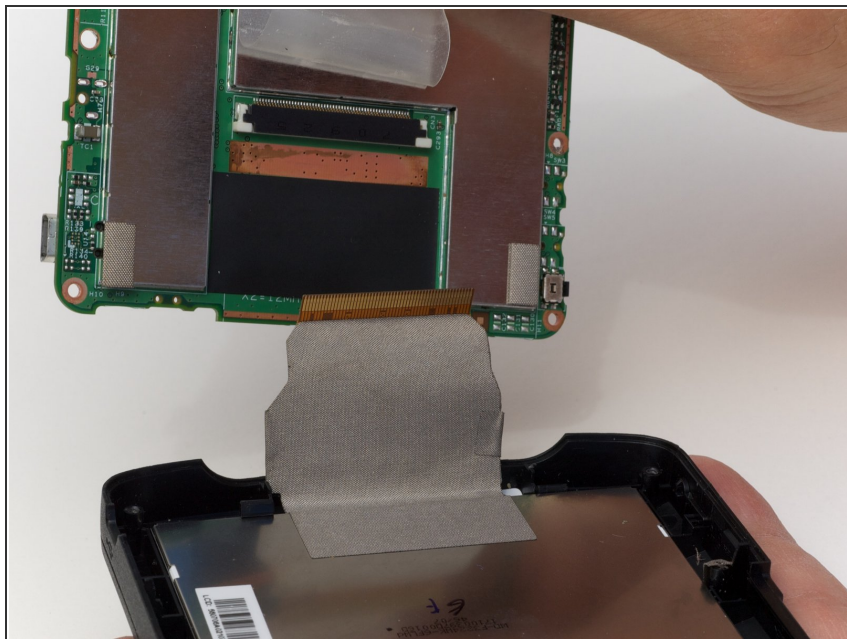
- Lift up the circuit board and disconnect the GPS wire, pulling horizontally from its connector port.

Step 7 — Logic Board



- Peel back the tape securing the display connector to the logic board.

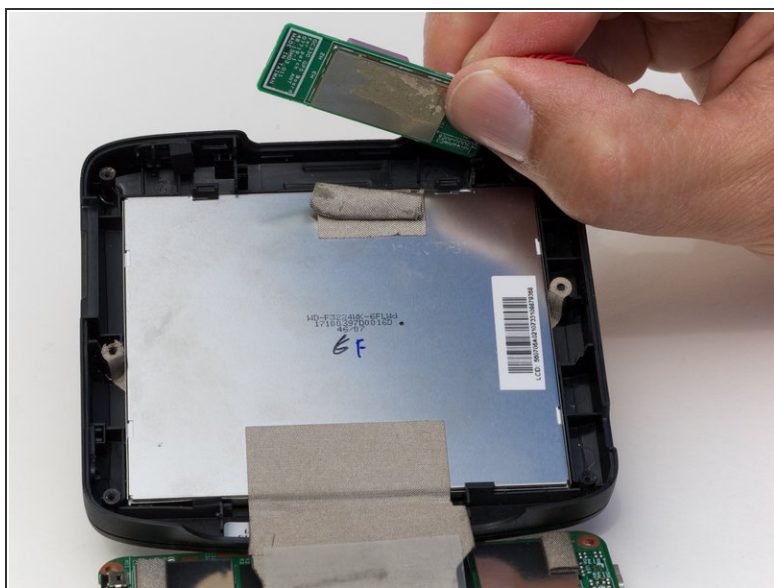
Step 8



- Remove the display connector from the device.

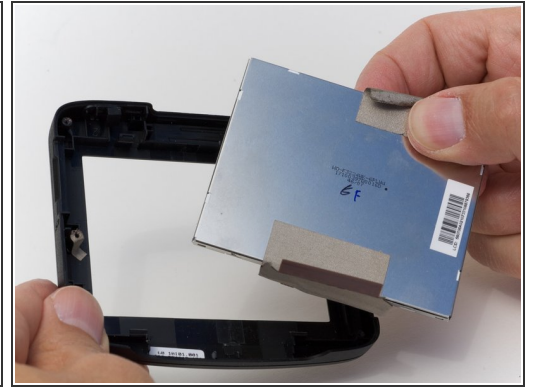
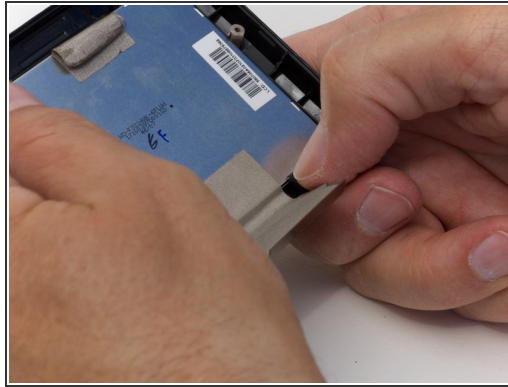
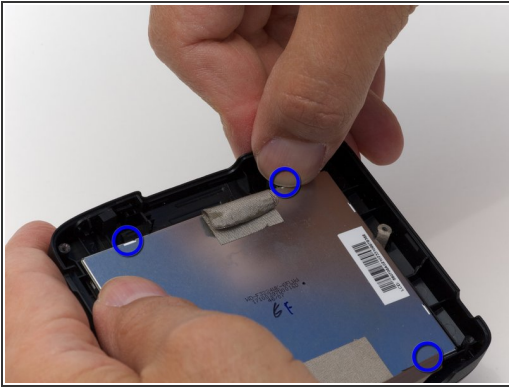
⚠ Do not pull on the cable because you may damage it. Instead, try to pull as closely as you can to the plug.

Step 9 — GPS Sensor



- Carefully flip the circuit board out so you can get to the sensor easily.
- Remove the tape holding the sensor to the display and take out the sensor.

Step 10 — Display



- Undo the 4 clasps holding the display in place.
- Pop the display from the front cover.

To reassemble your device, follow these instructions in reverse order.