



Toshiba Satellite A105-S4284 LCD Display Replacement

The display is incorporated into the Lid of the...

Written By: Josh



INTRODUCTION

The display is incorporated into the Lid of the laptop and is susceptible to cracking from falls or pressure. Often this could result in the laptop being unusable. This guide will show you how to disconnect and remove the Lid from the main laptop body, separate the LCD from the lid.


TOOLS:

Phillips #1 Screwdriver (1)

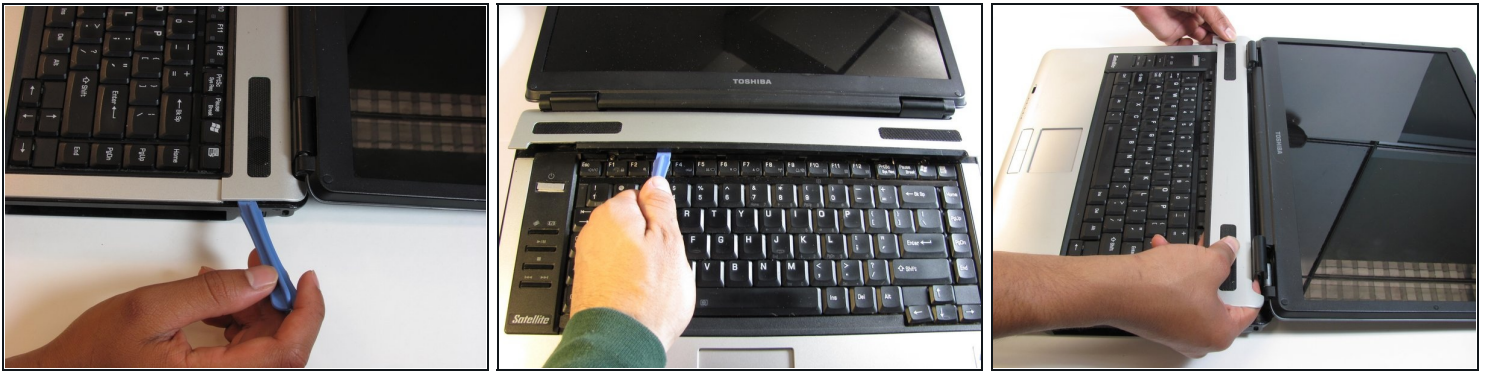
iFixit Opening Tool (1)

Step 1 — Keyboard



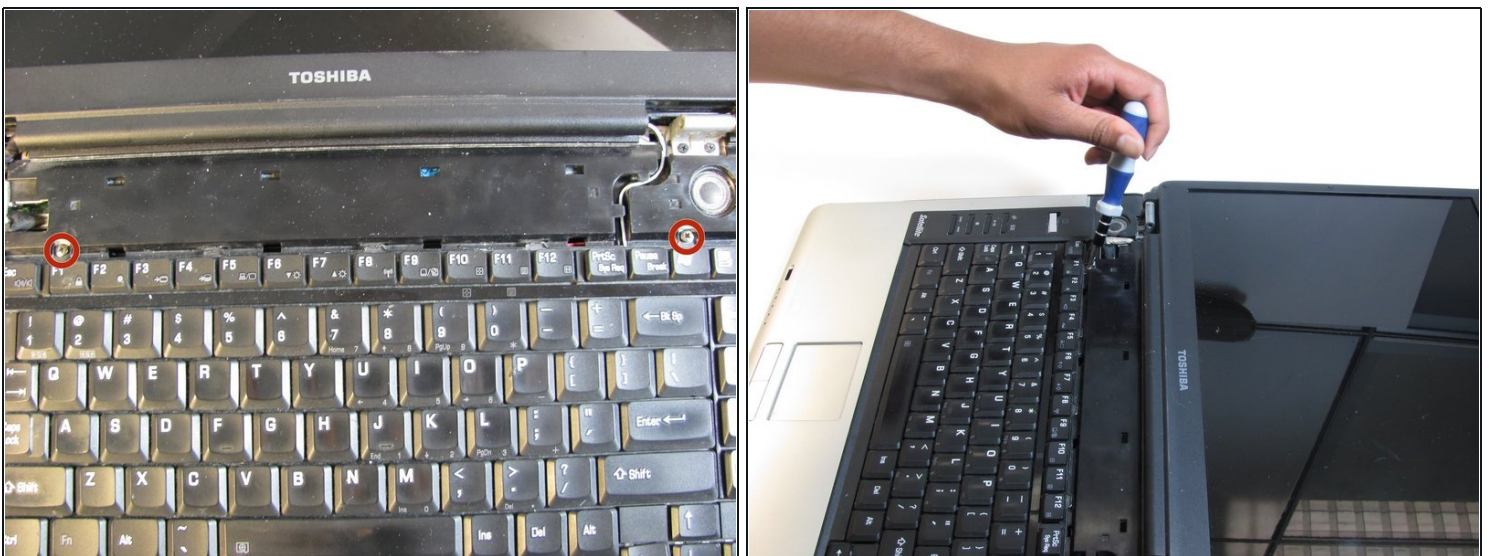
-  Flip the laptop over so it is rightside up, and open the laptop all the way so that the screen is horizontal.

Step 2



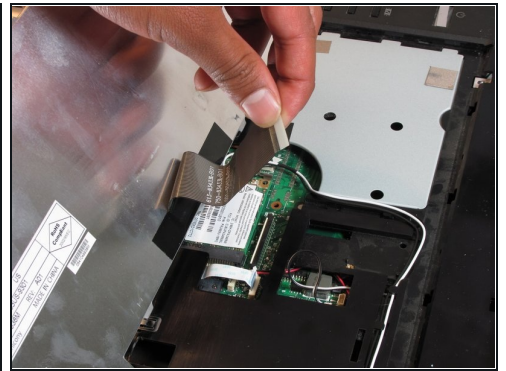
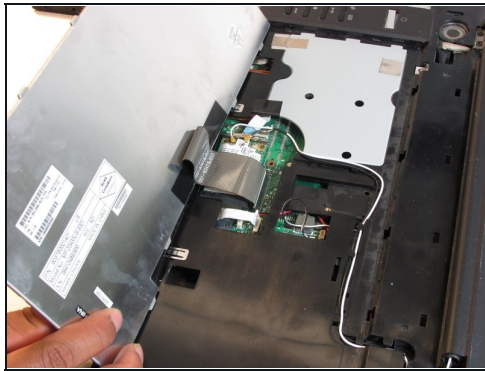
- Using the plastic opening tool, pry off the panel above the keyboard, starting near the right front speaker.
- Use the plastic opening tool to pop off tabs along the length of this panel.
- ① This may feel like you're about to break something, but as long as you work your way down the panel and don't yank it out, the laptop will be fine.

Step 3



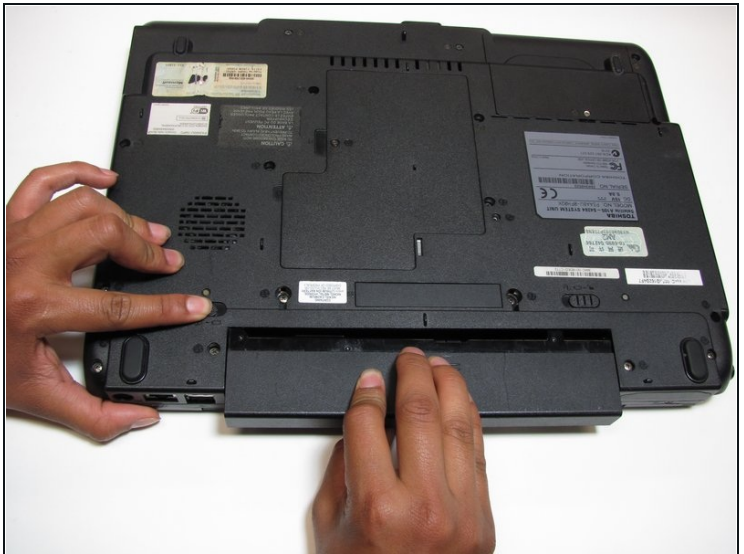
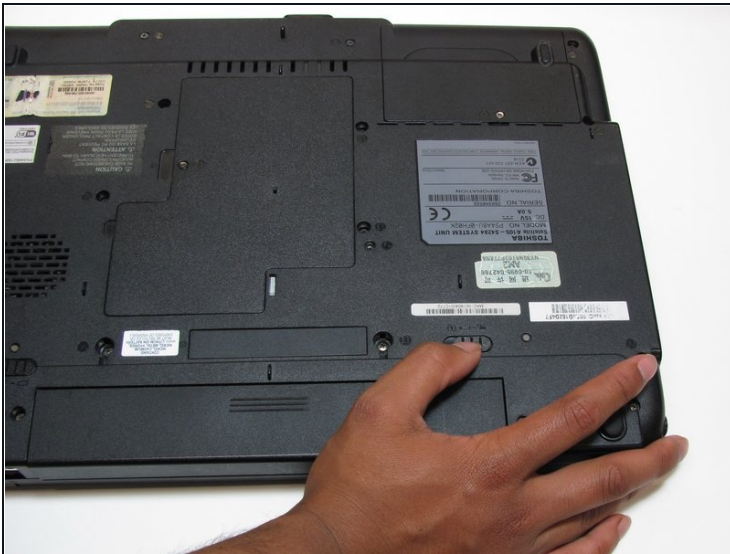
- Unscrew the two 4.5 mm screws holding the keyboard on with the Phillips #1 screwdriver.

Step 4



- Lift the keyboard gently from the side closest the screen.
- Pull out the ribbon connecting the keyboard to the laptop.

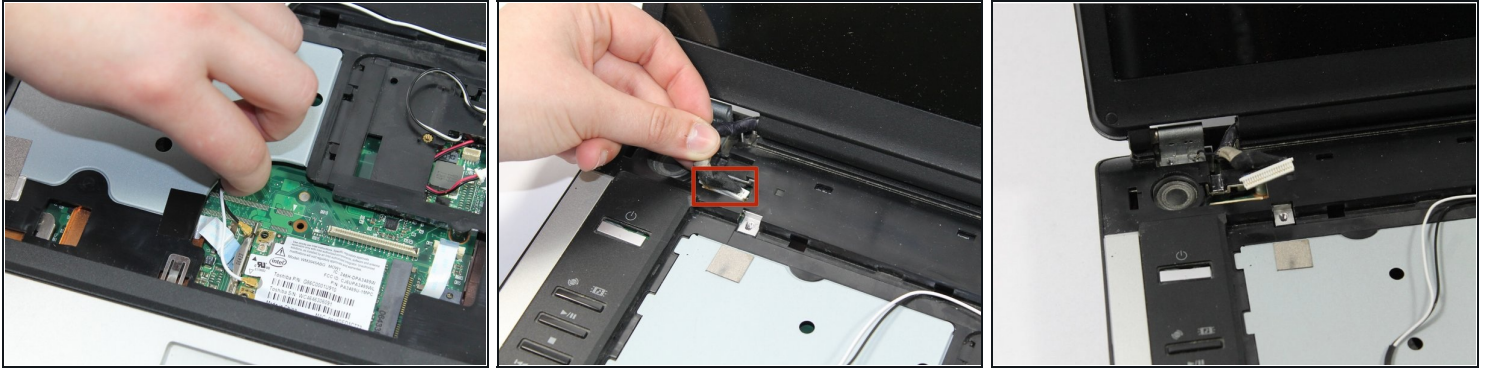
Step 5 — Battery



⚠ Make sure your computer is turned off and the computer is not plugged in.

- Turn your laptop upside down, and slide the right release tab outward.
- Using your left hand, hold the left release tab towards the left side and then pull the battery out.

Step 6 — LCD Display



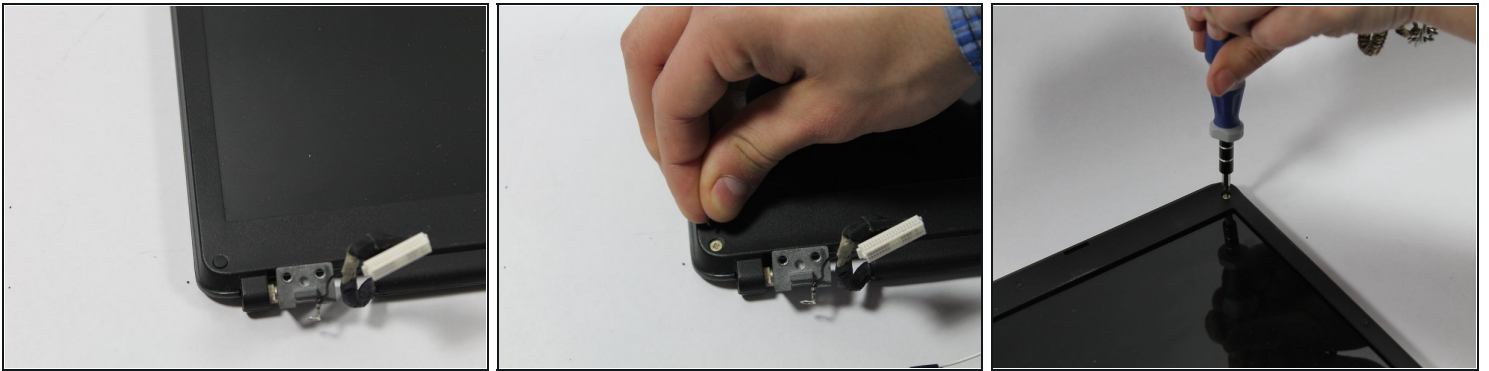
- Remove the black and white wires. they simply lift off the posts.
- Remove the cable attaching the LCD to the motherboard, on the left side of the laptop.

Step 7



- Using the Phillips screwdriver remove the two 4.0mm screws from each hinge above speakers.
- Partially close the lid and remove the last two 4.0mm screws from the back of the laptop.

Step 8



- Peel off the rubber circles from the four corners.
- Remove the four 4.0mm phillips screws.

Step 9



- Using the plastic prying tools separate the plastic surrounding the screen
- Lift out the broken LCD to be replaced.

To reassemble your device, follow these instructions in reverse order.