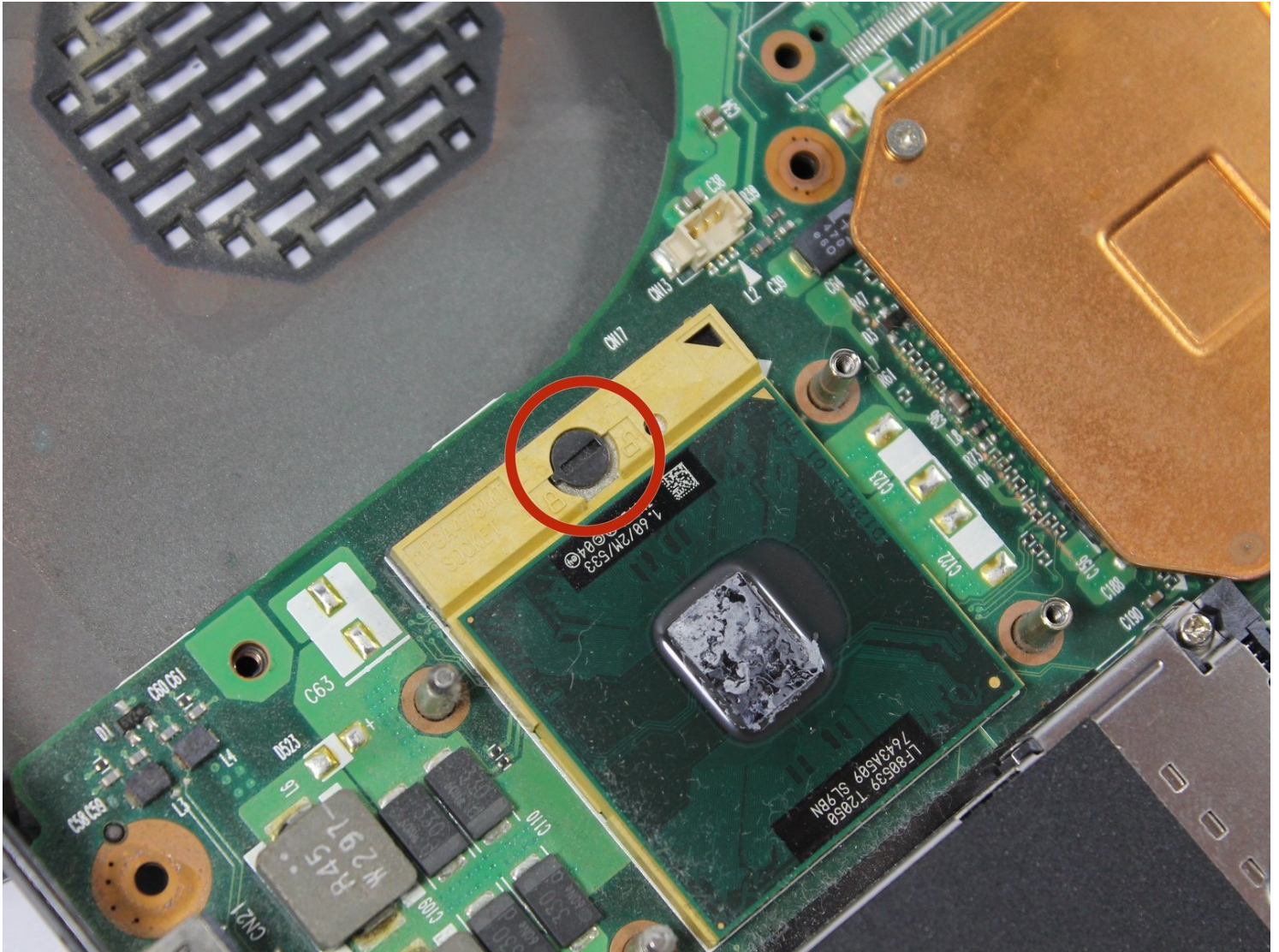




# Toshiba Satellite A105-S4284 CPU(Central Processor Unit) Replacement

Written By: Josh



---

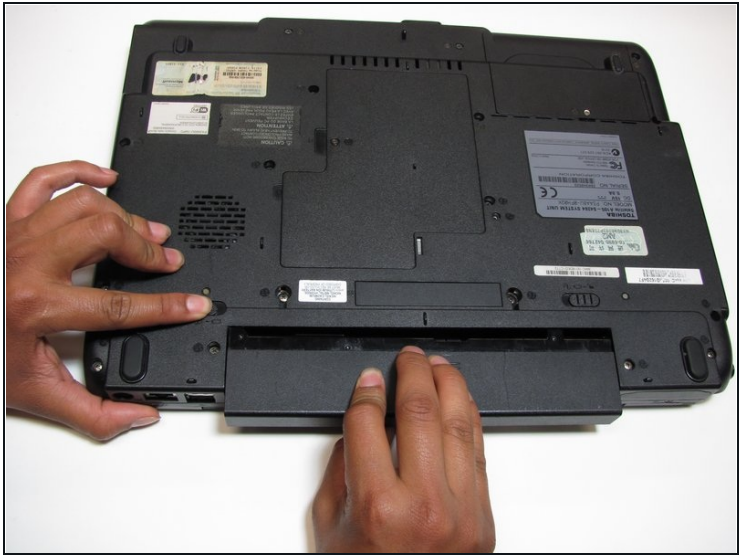
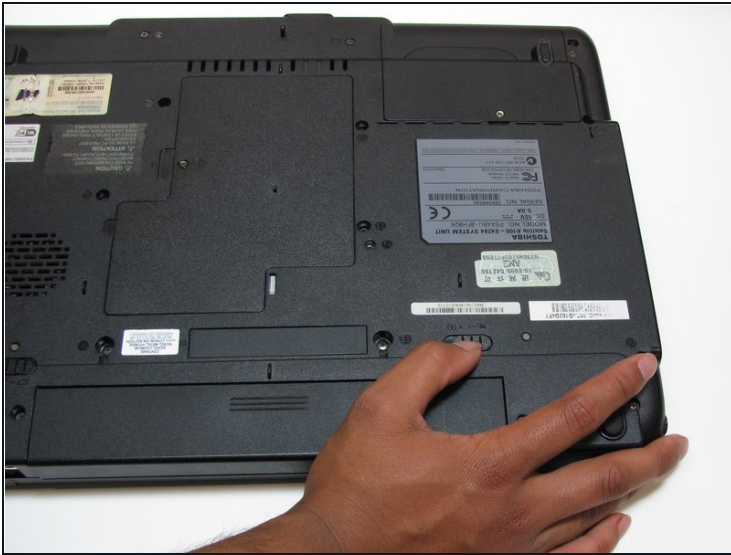
## TOOLS:

64 Bit Driver Kit (1)

iFixit Opening Tool (1)

---

### Step 1 — Battery



 Make sure your computer is turned off and the computer is not plugged in.

- Turn your laptop upside down, and slide the right release tab outward.
- Using your left hand, hold the left release tab towards the left side and then pull the battery out.

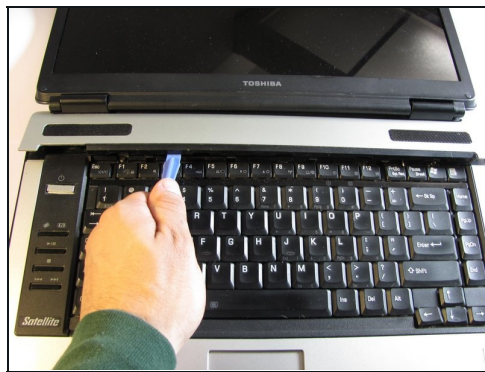


## Step 2 — Keyboard



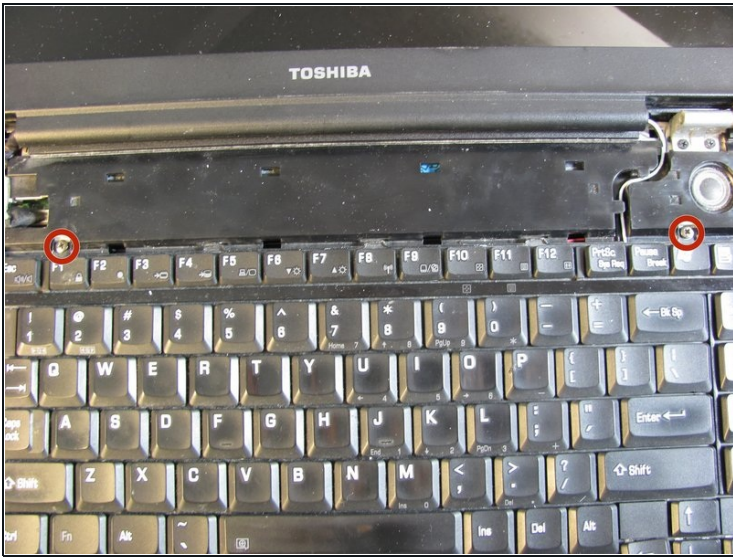
- ① Flip the laptop over so it is rightside up, and open the laptop all the way so that the screen is horizontal.

## Step 3



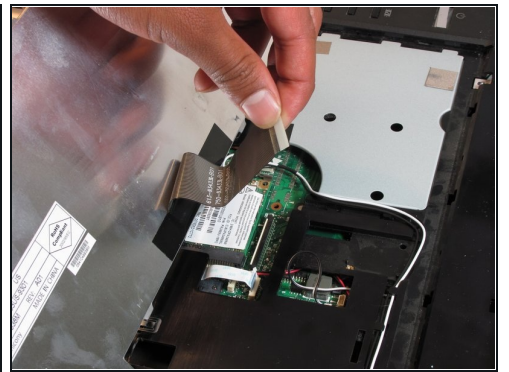
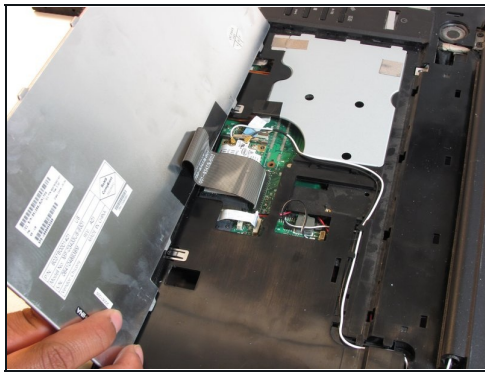
- Using the plastic opening tool, pry off the panel above the keyboard, starting near the right front speaker.
- Use the plastic opening tool to pop off tabs along the length of this panel.
- ① This may feel like you're about to break something, but as long as you work your way down the panel and don't yank it out, the laptop will be fine.

## Step 4



- Unscrew the two 4.5 mm screws holding the keyboard on with the Phillips #1 screwdriver.

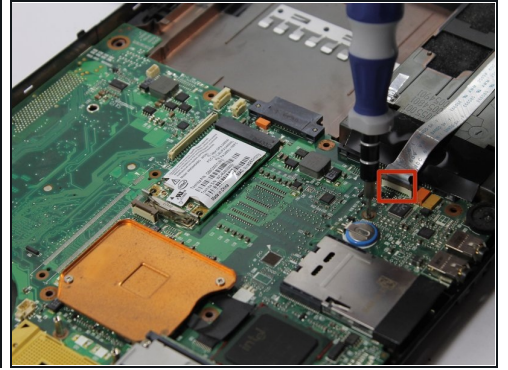
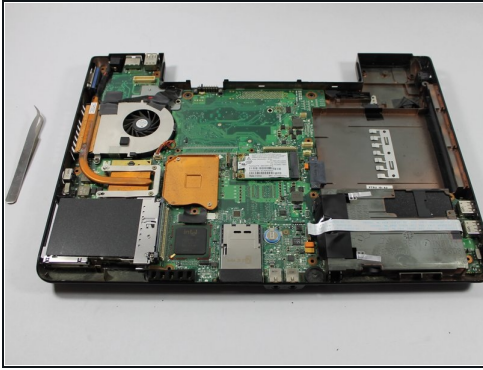
## Step 5



- Lift the keyboard gently from the side closest the screen.
- Pull out the ribbon connecting the keyboard to the laptop.

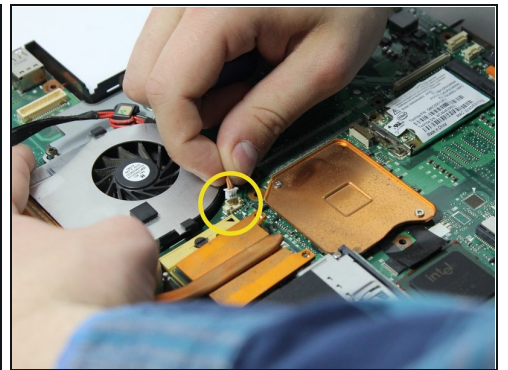
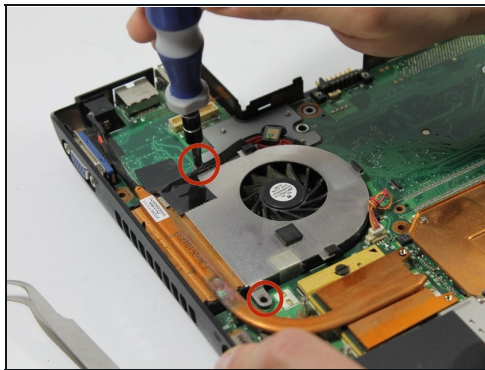
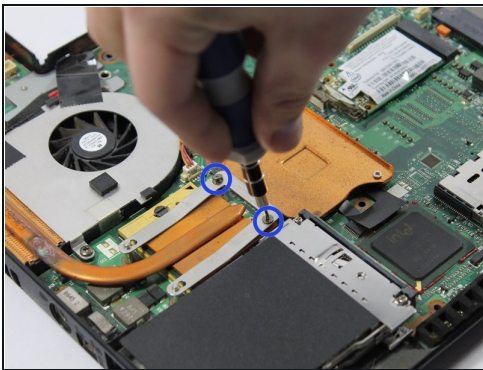


## Step 6 — Motherboard



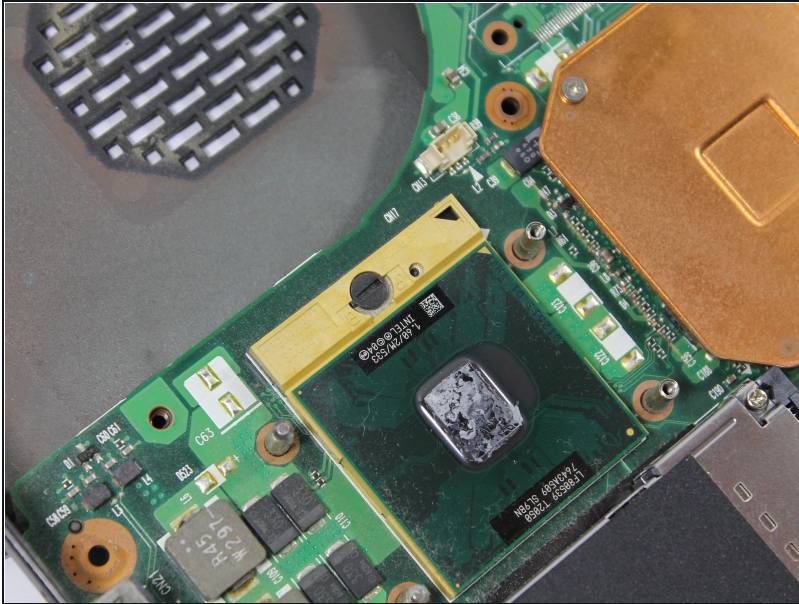
- Remove the upper half of laptop and place bottom half in the center of your workspace.
- Remove the one 2.00mm Phillips screw.
- Remove the ribbon cable connecting the USB ports to the motherboard.

## Step 7



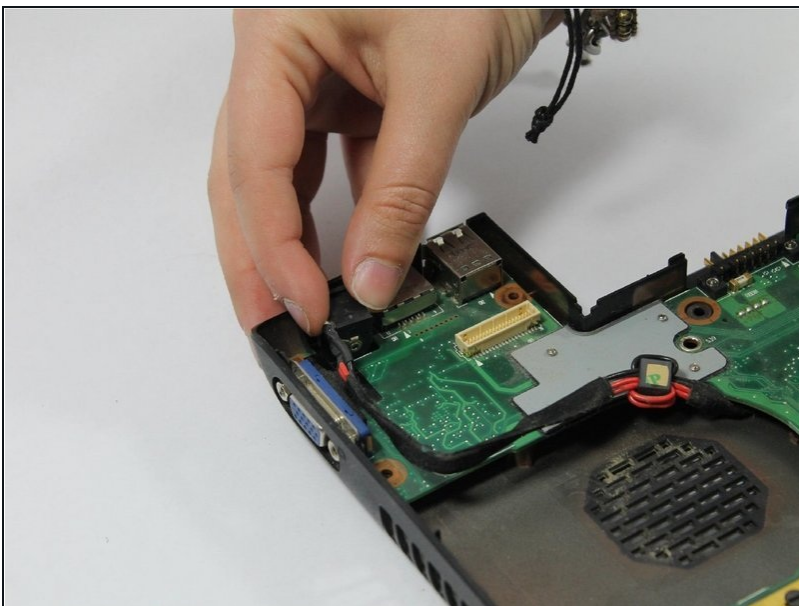
- Remove the two 2.5mm Phillips screws holding the spring retainer for the heat sink.
- Remove the two 4.0mm Phillips screws holding the fan in place.
- Remove the fan power connector.

## Step 8



- Lift fan and heat sink out of case.

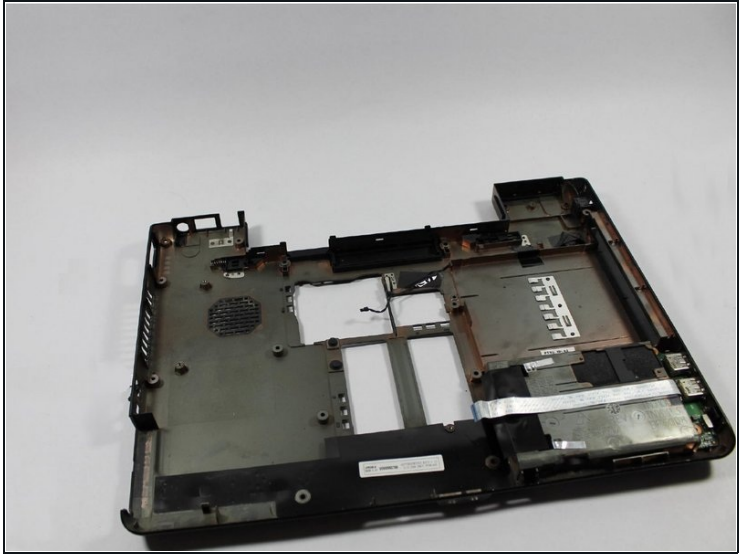
## Step 9



- Lift the power jack straight up and out of the slots that hold it in.

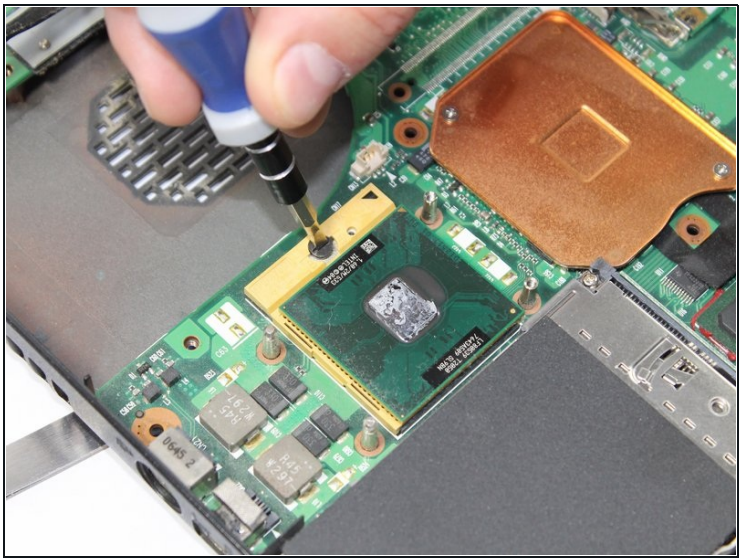
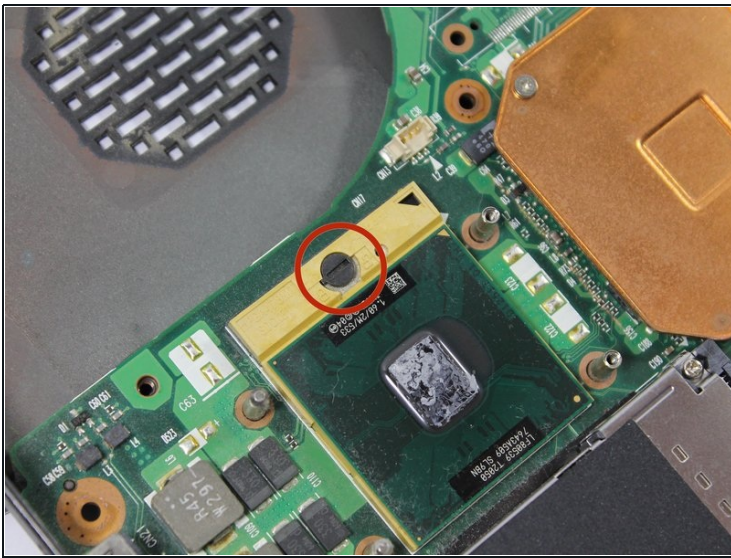


## Step 10



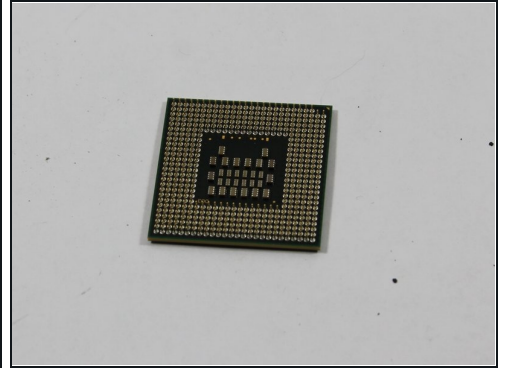
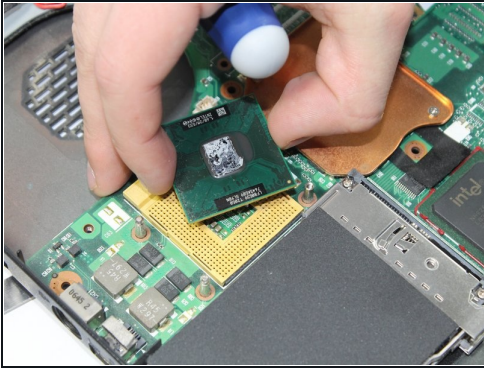
- Lift the motherboard out of the bottom case.

## Step 11 — CPU(Central Processor Unit)



- Rotate the locking screw holding the CPU in, counter clockwise 180 degrees.

## Step 12



- Lift CPU straight out of place.

⚠ Hold CPU by the sides so you do not damage the small pins.

---

To reassemble your device, follow these instructions in reverse order.